

Finger-shaped

Attachable

Extruded  
with solderpins

Extruded  
standard length

Die-cast

Profiles

Mounting  
accessories

Distance spacers

Fans

ASSMANN WSW components, Hersteller von Standard- und kundenspezifischen Kühlkörpern bietet Finger- und Kleinkühlkörper, als preisgünstige und zweckmäßige Lösung bei kleinen Verlustleistungen an. Entsprechende Applikationen sind breit gefächert und finden sich in nahezu in jedem Anwendermarkt, angefangen vom Industrie-, Telekommunikations-, Computer- und Consumermarkt bis hin zur Automobilzulieferindustrie.

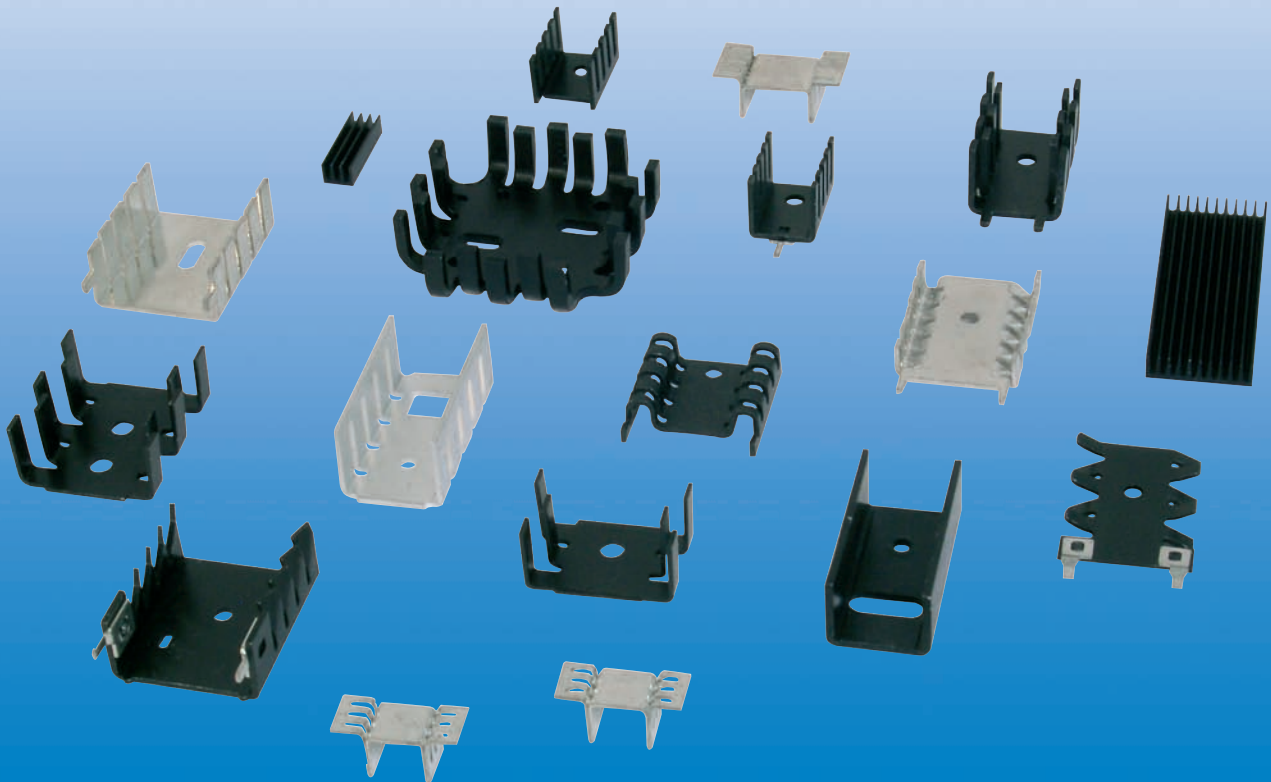
Eingesetzt werden Finger- und Kleinkühlkörper in Anwendungen, für die die geforderten Wärmewiderstände oberhalb von 16 K/W liegen. Aufgrund der platzsparenden Geometrie sind die Finger- und Kleinkühlkörper fast überall einsetzbar. Aktive Bauelemente werden direkt mit dem Kühlkörper verschraubt oder verklebt. Finger- und Kleinkühlkörper sind lieferbar in horizontaler und vertikaler Ausführung. Vertikal ausgeführte Kühlkörper sind zusätzlich mit Lötstiften lieferbar, um damit den Kühlkörper auf der Leiterkarten zu stabilisieren und gleichzeitig verlöten zu können. Finger- und Kleinkühlkörper werden wahlweise mit einer schwarz eloxierten oder verzinnnten Oberfläche geliefert.

Im Angebot befinden sich zusätzlich sogenannte D Pak-Kühlkörper, deren Basismaterial im Gegensatz zu den meisten Stanzkühlkörpern nicht aus Aluminiumbandmaterial, sondern aus vorverzinntem Kupfer bestehen. Durch die Wahl des vorverzinnten Basismaterials erhöht sich die Fähigkeit, die im aktiven Bauelement entstehende Wärme aufzunehmen. D Pak-Kühlkörper sind SMD lötfähig und auch als Rollenware zur Maschinenbestückung erhältlich.

ASSMANN WSW components, manufacturer of standard—and customized heatsinks offers finger-shaped and small heatsinks as an efficient and low cost solution for small amounts of heat to be dissipated. Corresponding applications can be found in nearly every end user market, whether it is the industrial-, telecom-, computer-, consumer market or the automotive industry.

Finger-shaped and small heatsinks are designed into applications with a request of above 16K/W thermal resistance. Finger-shaped and small heat sinks have a major advantage due to their design and size, which is saving board space. Active components are directly screwed or bonded onto the heatsink. Finger-shaped and small heatsinks are available based on a horizontal or vertical design. The vertical heatsink design has the further advantage to be equipped optionally with solder pins to stabilize during the assembly process and enable the product to be soldered on the board at the same time. For finger-shaped and small heatsinks different surfaces in tinned or black anodised can be chosen.

The ASSMANN WSW components program will be completed by the so called 'D Pak heatsinks', which are stamped out of pre-tinned copper instead of the normally used aluminium band material. As a result of the different base material the heat conductivity increases. D-Pak-heat sinks can be used for the reflow soldering process and are available for pick and place handling out of tape & reel packaging.



**Produktbeschreibung**

**Seite**

Finger- u. Kleinkühlkörper, Standardlochungen für Profilkühlkörper	8
Finger- u. Kleinkühlkörper, Kühlkörper für IC-Bausteine	12
Finger- u. Kleinkühlkörper, U-Kühlkörper für Transistoren TO-220 Gehäuse	13
Finger- u. Kleinkühlkörper, Spezial-Kühlkörper für TO-220 / SOT-32 Gehäuse	16
Finger- u. Kleinkühlkörper, Spezial-Kühlkörper für TO-220 Gehäuse	18
Finger- u. Kleinkühlkörper, SMD-Kühlkörper für D Pak Gehäuse	23
Finger- u. Kleinkühlkörper, Gestanzte Fingerkühlkörper	24
Notizen	25

**Product description**

**page**

Finger-shaped & Small heatsinks, Standard holepatterns for profile heatsinks	8
Finger-shaped & Small heatsinks, Heatsinks for IC-module	12
Finger-shaped & Small heatsinks, U-heatsinks for transistors TO-220 packages	13
Finger-shaped & Small heatsinks, Special-heatsinks for TO-220 / SOT-32 packages	16
Finger-shaped & Small heatsinks, Special-heatsinks for TO-220 packages	18
Finger-shaped & Small heatsinks, SMD-heatsinks for D Pak packages	23
Finger-shaped & Small heatsinks, Stamped Finger-shaped heatsinks	24
Notes	25



Finger-shaped

Attachable

Extruded with solderpins

Extruded standard length

Die-cast

Profiles

Mounting accessories

Distance spacers

Fans

Finger-shaped

Attachable

Extruded with solderpins

Extruded standard length

Die-cast

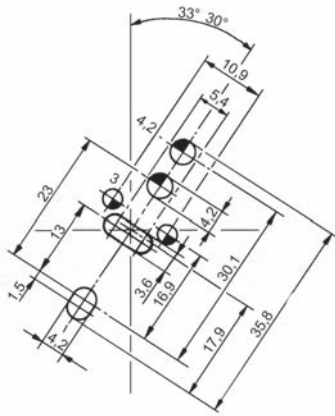
Profiles

Mounting accessories

Distance spacers

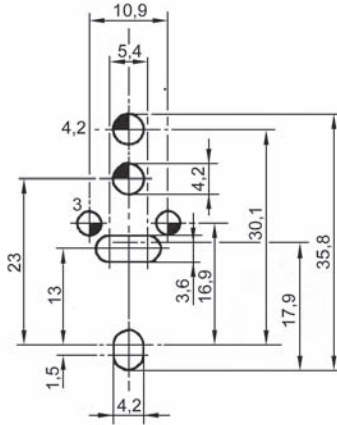
Fans

### KL



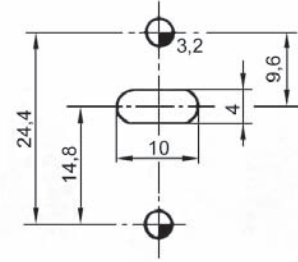
TO-3, TO-66, SOT-9, SOT-32, TO-220  
Schräg für 37,5mm lange Kühlkörper  
Diagonal for 37,5mm long heatsinks

### KL



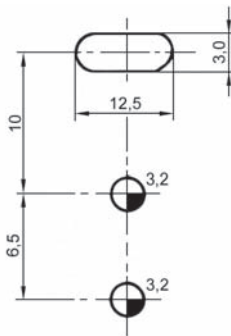
TO-3, TO-66, SOT-9, SOT-32, TO-220  
Gerade für 50mm lange Kühlkörper  
Straight for 50mm long heatsinks

### KLP



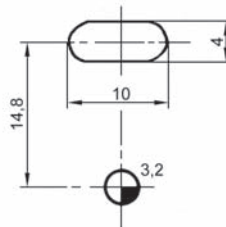
TO-66, SOT-32, TO-220, (TO-126)

### KLM

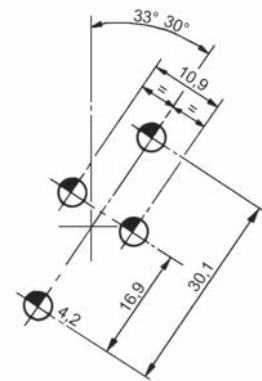


TO-220

### TO-220



### TO-3



Schräg für 37,5mm lange Kühlkörper  
Diagonal for 37,5mm long heatsinks



Finger-shaped

Attachable

Extruded  
with solderpins

Extruded  
standard length

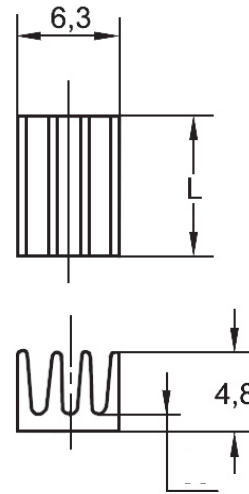
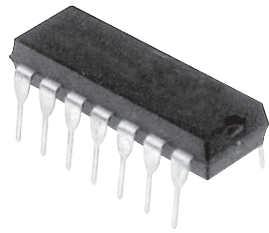
Die-cast

Profiles

Mounting  
accessories

Distance spacers

Fans

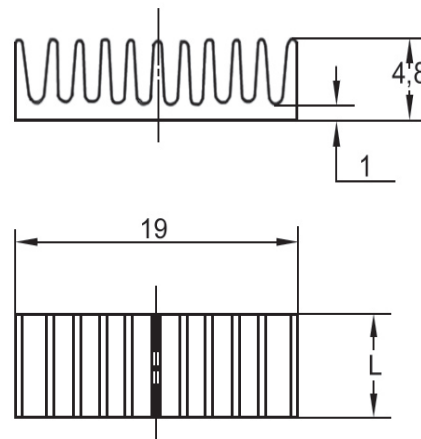
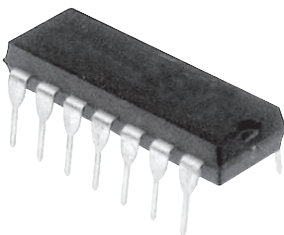
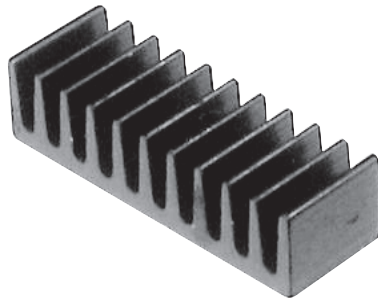


Option Option	Polzahl No. of poles	Dimension L (mm)	Wärmewiderstand Thermal resistance (K/W)
A	6 / 8	8,5	80
B	14 / 16	19	46
C	18	23	40

Bestellcode  
Ordercode

**V 5618 x**

Bitte „x“ durch die geeignete Option ersetzen  
Please replace „x“ with appropriate option



Option Option	Polzahl No. of poles	Dimension L (mm)	Wärmewiderstand Thermal resistance (K/W)
A	14 / 16	6,3	48
B	24	33	13

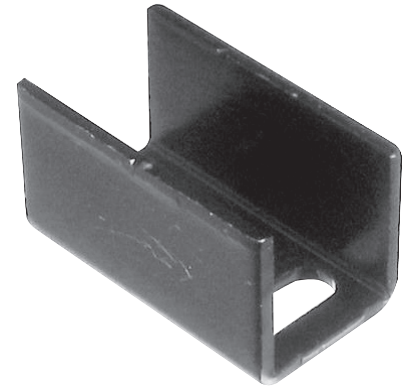
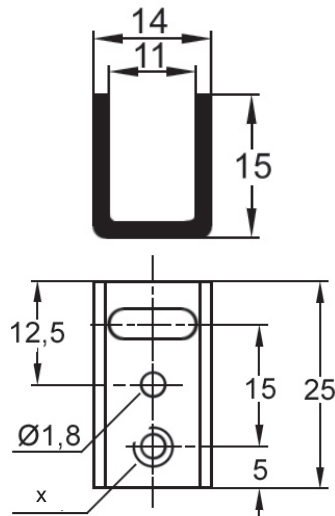
Bestellcode  
Ordercode

**V 5619 x**

Bitte „x“ durch die geeignete Option ersetzen  
Please replace „x“ with appropriate option

Alle Typen werden in schwarz eloxierter Ausführung geliefert  
All types will be delivered in black anodized finish

**TO-220**



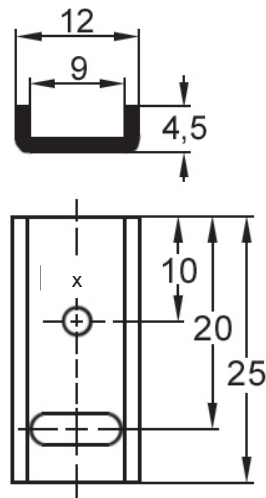
Option Option	Lochung x Hole pattern x	Wärmewiderstand Thermal resistance (K/W)
A	M2,5	20
B	M3	20
C	dia. 3,2	20

Bestellcode  
Ordercode

Bitte „x“ durch die geeignete Option ersetzen  
Please replace „x“ with appropriate option

**V 5074 x**

**TO-220**



Option Option	Lochung x Hole pattern x	Wärmewiderstand Thermal resistance (K/W)
A	M2,5	20
B	M3	20
C	dia. 3,2	20

Bestellcode  
Ordercode

Bitte „x“ durch die geeignete Option ersetzen  
Please replace „x“ with appropriate option

**V 5274 x**

Alle Typen werden in schwarz eloxierter Ausführung geliefert  
All types will be delivered in black anodized finish

Finger-shaped

Attachable

Extruded  
with solderpins

Extruded  
standard length

Die-cast

Profiles

Mounting  
accessories

Distance spacers

Fans

Finger-shaped

Attachable

Extruded  
with solderpins

Extruded  
standard length

Die-cast

Profiles

Mounting  
accessories

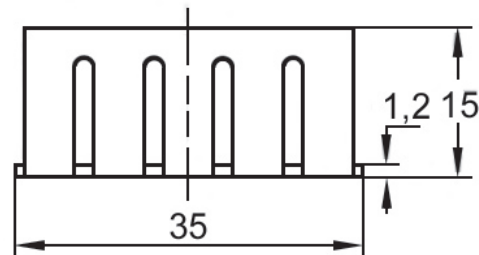
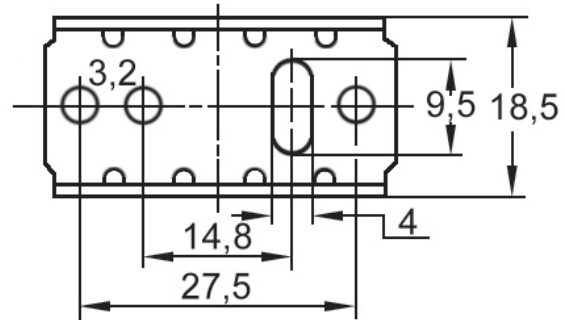
Distance spacers

Fans



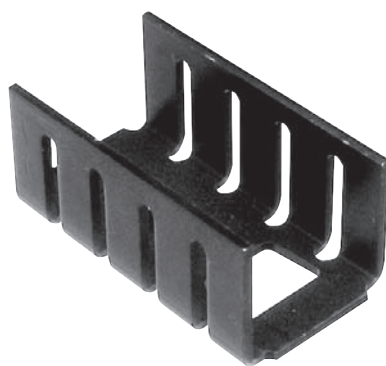
**Wärmewiderstand**

Thermal resistance: 15 K/W



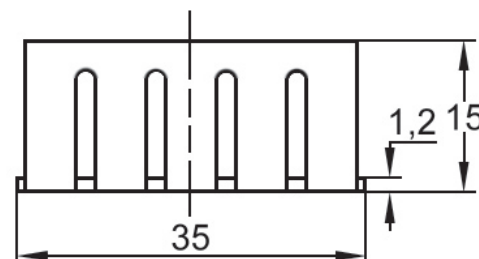
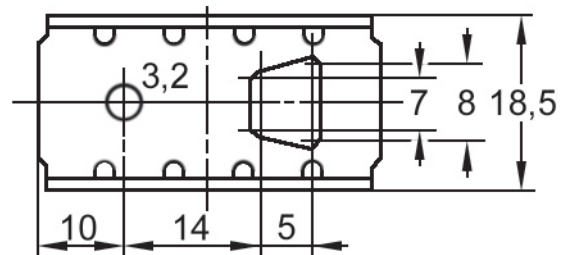
Bestellcode  
Ordercode

**V 5630**



**Wärmewiderstand**

Thermal resistance: 15 K/W

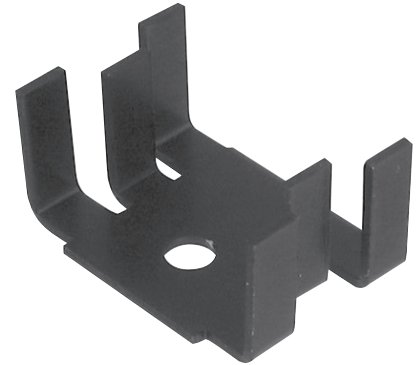
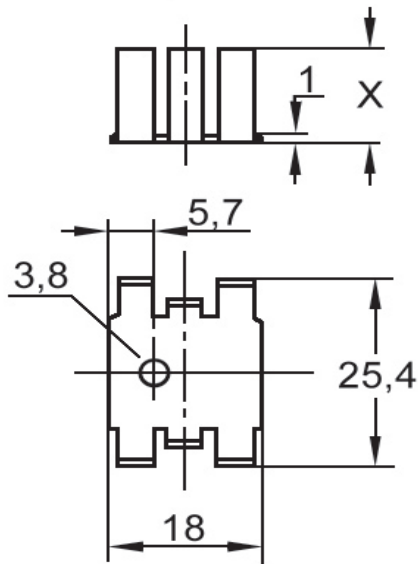


Bestellcode  
Ordercode

**V 6503**

Alle Typen werden in schwarz eloxierter Ausführung geliefert  
All types will be delivered in black anodized finish

**TO-220**



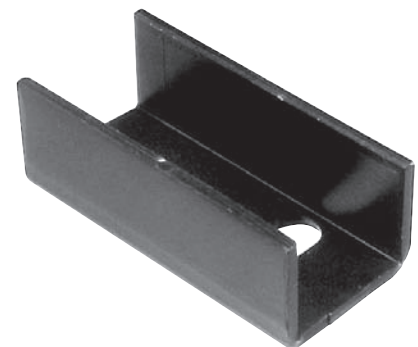
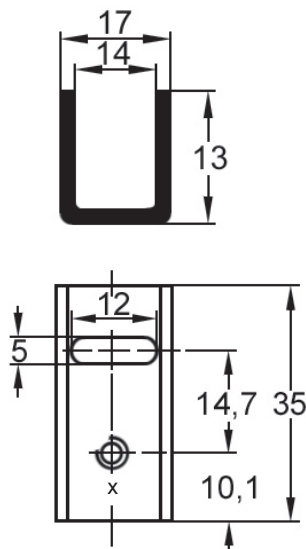
Option Option	Dimension X (mm)	Wärmewiderstand Thermal resistance (K/W)
4	7,9	25
5	12,7	21

Bestellcode  
 Ordercode

Bitte „x“ durch die geeignete Option ersetzen  
 Please replace „x“ with appropriate option

**V 523 x B**

**TO-220**



Option Option	Lochung x Hole pattern x	Wärmewiderstand Thermal resistance (K/W)
X	M3	17
Y	dia. 3,2	17

Bestellcode  
 Ordercode

Bitte „x“ durch die geeignete Option ersetzen  
 Please replace „x“ with appropriate option

**V 5616 x**

Alle Typen werden in schwarz eloxierter Ausführung geliefert  
 All types will be delivered in black anodized finish

- Finger-shaped
- Attachable
- Extruded with solderpins
- Extruded standard length
- Die-cast
- Profiles
- Mounting accessories
- Distance spacers
- Fans

Finger-shaped

Attachable

Extruded  
with solderpins

Extruded  
standard length

Die-cast

Profiles

Mounting  
accessories

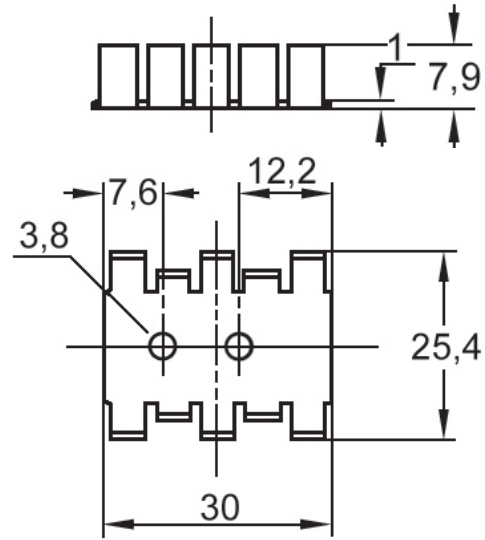
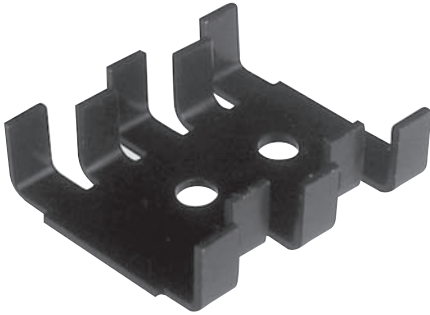
Distance spacers

Fans

**TO-220 / SOT-32**

**Wärmewiderstand**

Thermal resistance: 18 K/W



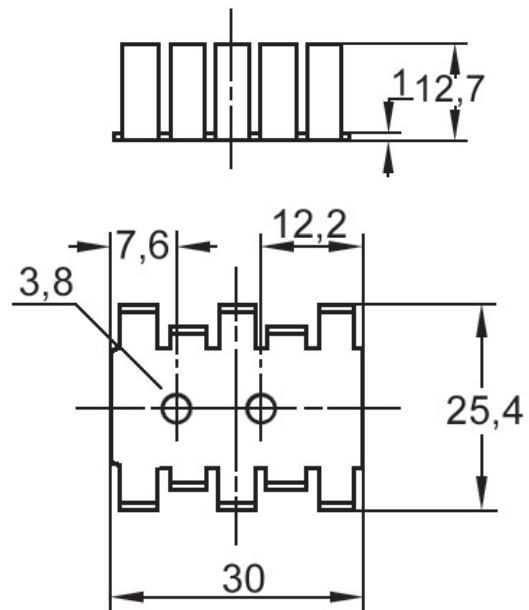
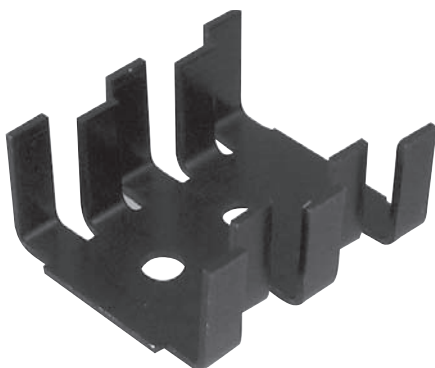
Bestellcode  
Ordercode

**V 5236 B**

**TO-220 / SOT-32**

**Wärmewiderstand**

Thermal resistance: 15 K/W

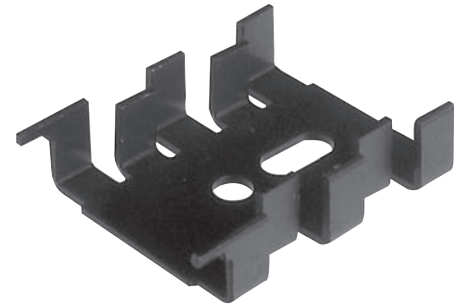
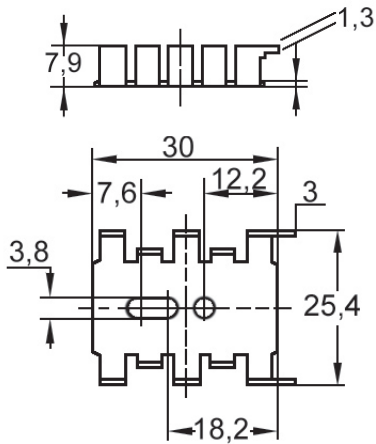


Bestellcode  
Ordercode

**V 5237 B**

Alle Typen werden in schwarz eloxierter Ausführung geliefert  
All types will be delivered in black anodized finish

**TO-220 / SOT-32**



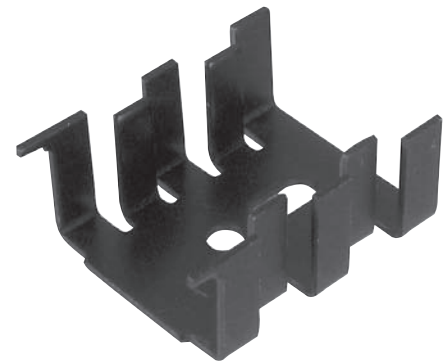
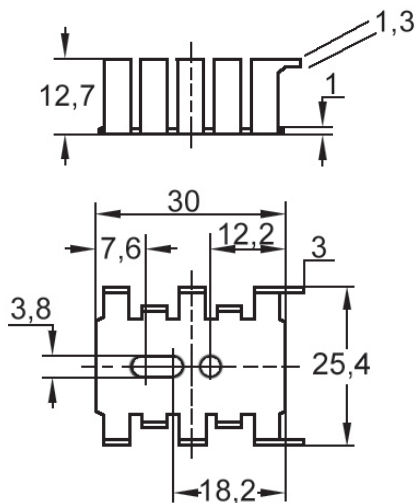
Option Option	Ausführung Version	Wärmewiderstand Thermal resistance (K/W)
SNP	Verzinkt, lötlbar Tinned, solderable	18
BP	Schwarz eloxiert Black anodized	18

Bestellcode  
Ordercode

Bitte „x“ durch die geeignete Option ersetzen  
 Please replace „x“ with appropriate option

**V 5236 x**

**TO-220 / SOT-32**



Option Option	Ausführung Version	Wärmewiderstand Thermal resistance (K/W)
SNP	Verzinkt, lötlbar Tinned, solderable	15
BP	Schwarz eloxiert Black anodized	15

Bestellcode  
Ordercode

Bitte „x“ durch die geeignete Option ersetzen  
 Please replace „x“ with appropriate option

**V 5237 x**

Finger-shaped

Attachable

Extruded  
with solderpins

Extruded  
standard length

Die-cast

Profiles

Mounting  
accessories

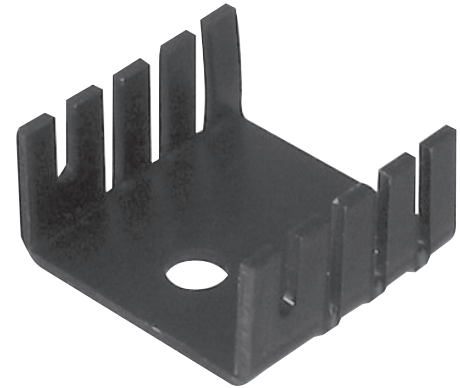
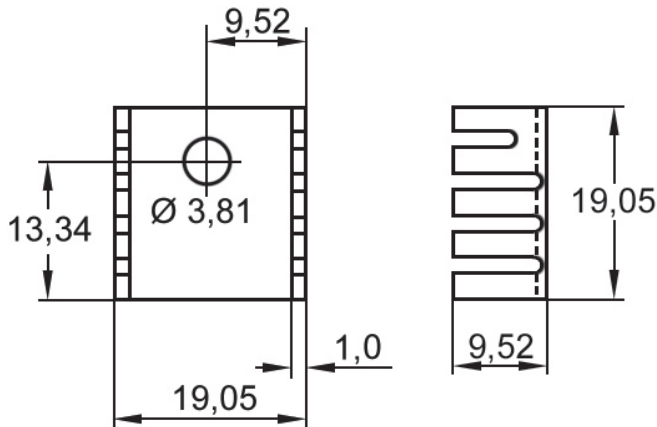
Distance spacers

Fans



**Wärmewiderstand**

Thermal resistance: 24K/W

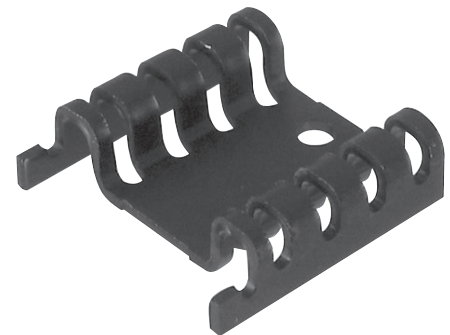
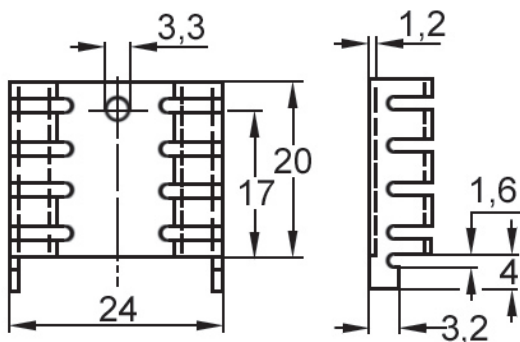


**TO-220**

Bestellcode  
Ordercode

**V 7235**

**TO-220**



Option Option	Ausführung Version	Wärmewiderstand Thermal resistance (K/W)
A	Verzinkt, lötlbar Tinned, solderable	21
B	Schwarz eloxiert Black anodized	21

Bestellcode  
Ordercode

Bitte „x“ durch die geeignete Option ersetzen  
Please replace „x“ with appropriate option

**V 7573 x**

Finger-shaped

Attachable

Extruded  
with solderpins

Extruded  
standard length

Die-cast

Profiles

Mounting  
accessories

Distance spacers

Fans

Finger-shaped

Attachable

Extruded  
with solderpins

Extruded  
standard length

Die-cast

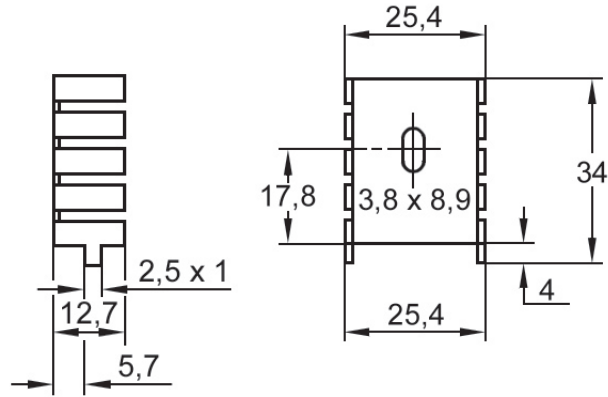
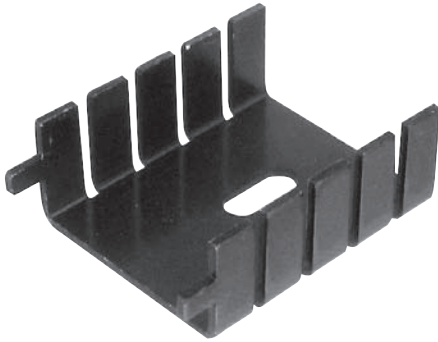
Profiles

Mounting  
accessories

Distance spacers

Fans

### TO-220



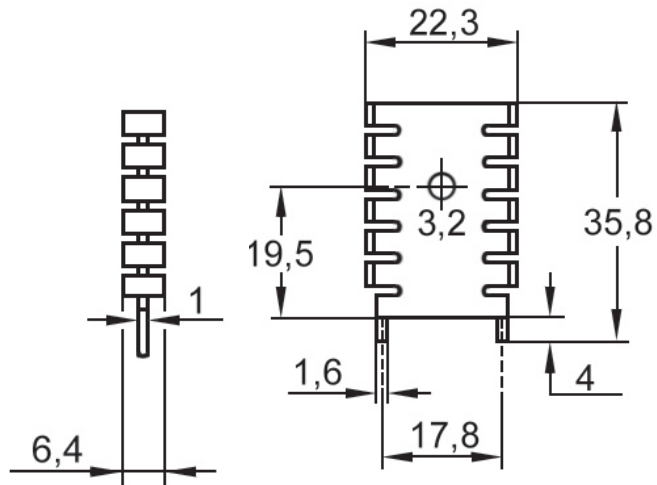
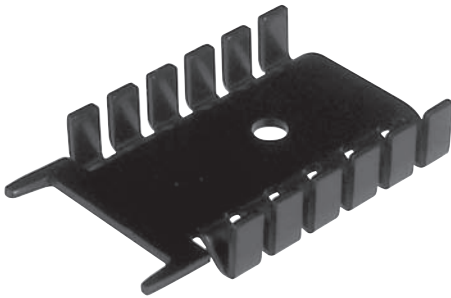
Option Option	Ausführung Version	Wärmewiderstand Thermal resistance (K/W)
A	Verzinkt, lötlbar Tinned, solderable	20
B	Schwarz eloxiert Black anodized	20

Bestellcode  
Ordercode

**V 5640 x**

Bitte „x“ durch die geeignete Option ersetzen  
Please replace „x“ with appropriate option

### TO-220



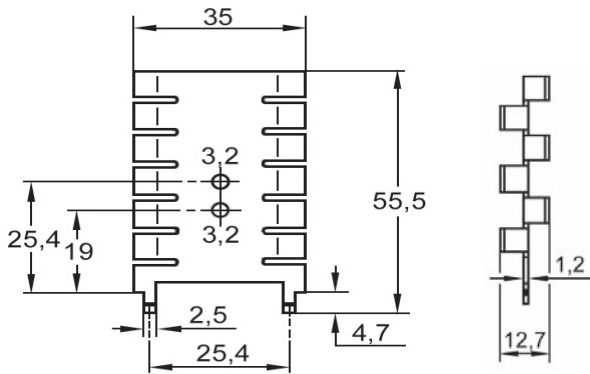
Option Option	Ausführung Version	Wärmewiderstand Thermal resistance (K/W)
A	Verzinkt, lötlbar Tinned, solderable	20
B	Schwarz eloxiert Black anodized	20

Bestellcode  
Ordercode

**V 5641 x**

Bitte „x“ durch die geeignete Option ersetzen  
Please replace „x“ with appropriate option

**TO-220**



Option Option	Ausführung Version	Wärmewiderstand Thermal resistance (K/W)
A	Verzinkt, lötlbar Tinned, solderable	14
B	Schwarz eloxiert Black anodized	14

Bestellcode  
Ordercode

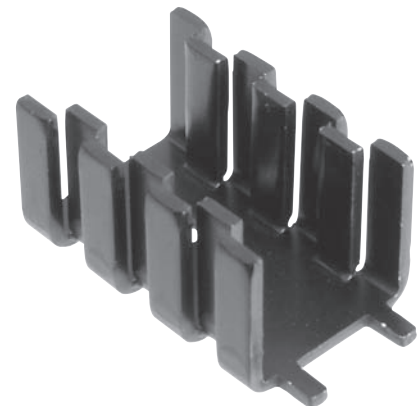
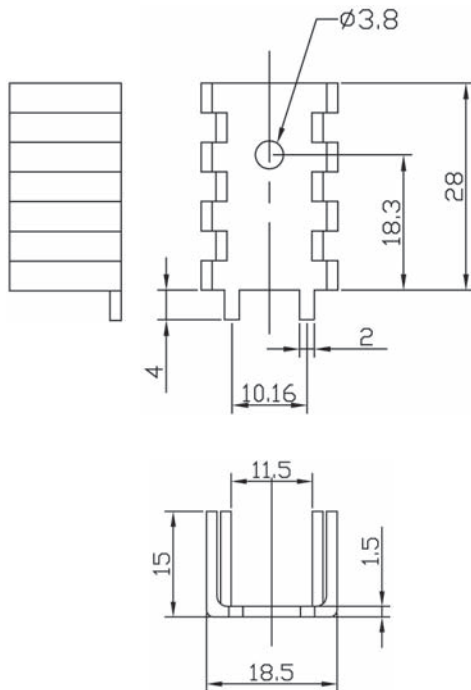
Bitte „x“ durch die geeignete Option ersetzen  
Please replace „x“ with appropriate option

**V 5642 x**

**Wärmewiderstand**

Thermal resistance: 16K/W

**TO-220**



Bestellcode  
Ordercode

**V 7238 E1**

Finger-shaped

Attachable

Extruded  
with solderpins

Extruded  
standard length

Die-cast

Profiles

Mounting  
accessories

Distance spacers

Fans

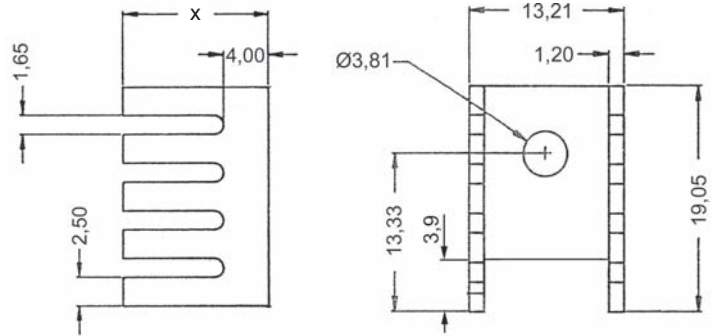
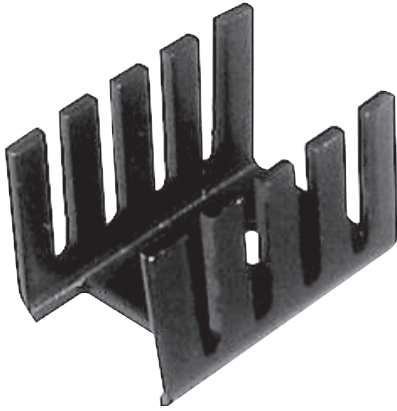
Finger-shaped

Attachable

Extruded  
with solderpins

Extruded  
standard length

### TO-220



Bestellcode  
Ordercode

Option Option	Dimension x (mm)	Wärmewiderstand Thermal resistance (K/W)
B1	9,53	22
C1	12,7	21

**V 7236 x**

Bitte „x“ durch die geeignete Option ersetzen  
Please replace „x“ with appropriate option

Die-cast

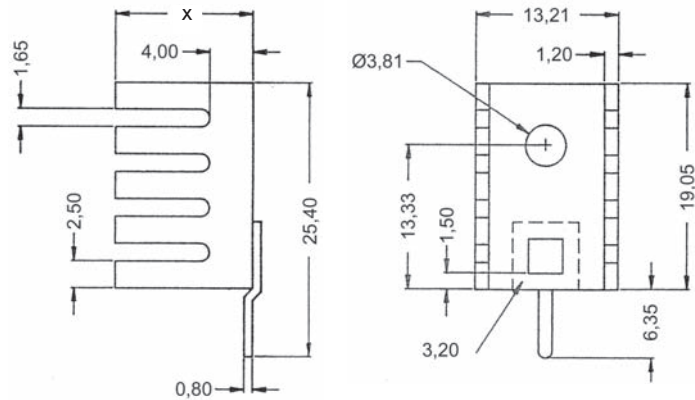
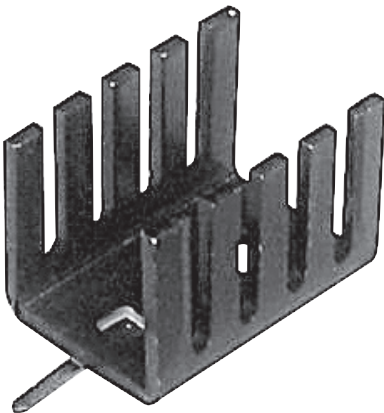
Profiles

Mounting  
accessories

Distance spacers

Fans

### TO-220



Bestellcode  
Ordercode

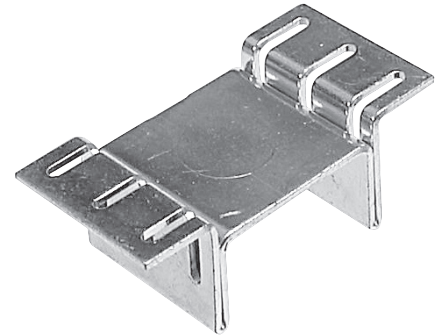
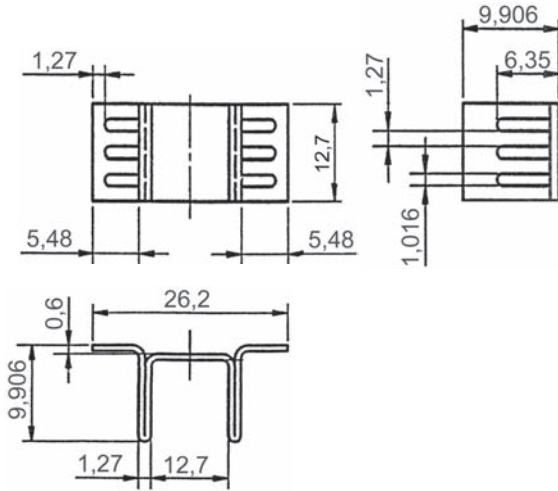
Option Option	Dimension x (mm)	Wärmewiderstand Thermal resistance (K/W)
B	9,53	22
C	12,7	21

**V 7237 x**

Bitte „x“ durch die geeignete Option ersetzen  
Please replace „x“ with appropriate option

Alle Typen werden in schwarz eloxierter Ausführung geliefert  
All types will be delivered in black anodized finish

**D<sup>2</sup>PAK (TO-263)**



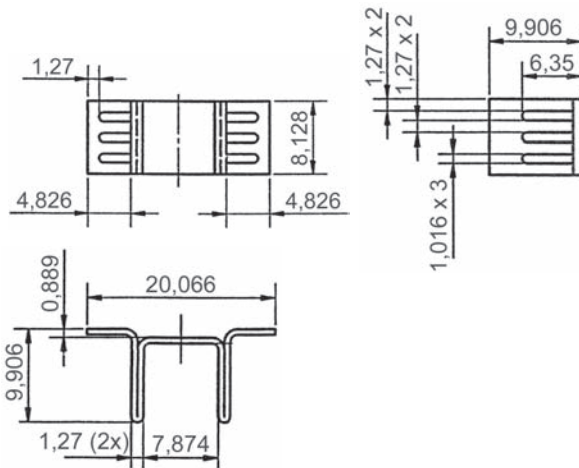
Option Option	Verpackung Packaging	Wärmewiderstand Thermal resistance (K/W)
-	Tape & Reel 250 pcs/reel	23
L	Lose Bulk	23

Bestellcode  
Ordercode

Bitte „x“ durch die geeignete Option ersetzen  
Please replace „x“ with appropriate option

V 1100 SMD / A x

**D PAK (TO-252)**



Option Option	Verpackung Packaging	Wärmewiderstand Thermal resistance (K/W)
-	Tape & Reel 350 pcs/reel	25
L	Lose Bulk	25

Bestellcode  
Ordercode

Bitte „x“ durch die geeignete Option ersetzen  
Please replace „x“ with appropriate option

V 1100 SMD / B x

Material Kupfer 0,6mm, verzinkt  
Material copper 0,6mm, tin plated

Finger-shaped

Attachable

Extruded  
with solderpins

Extruded  
standard length

Die-cast

Profiles

Mounting  
accessories

Distance spacers

Fans

Finger-shaped

Attachable

Extruded  
with solderpins

Extruded  
standard length

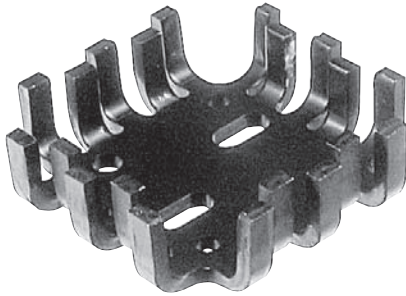
Die-cast

Profiles

Mounting  
accessories

Distance spacers

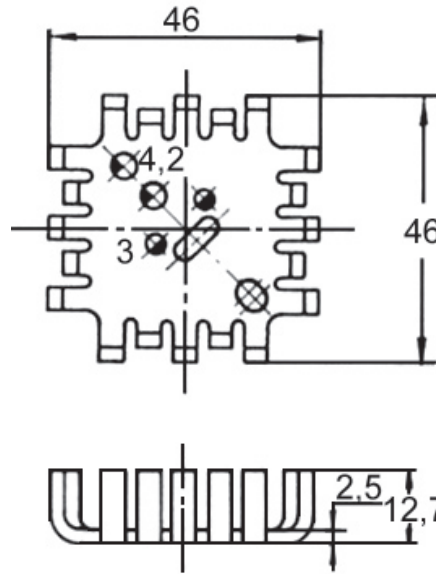
Fans



**KLF**

**Wärmewiderstand**

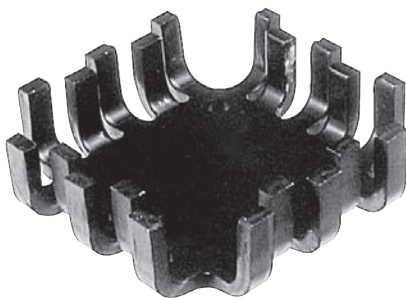
Thermal resistance: 7 K/W



TO-3, TO-66, SOT-9, SOT-32, TO-220

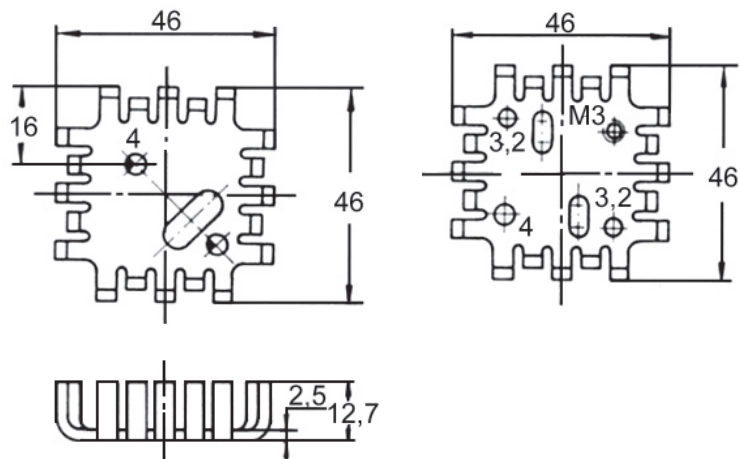
Bestellcode  
Ordercode

**V 4527 D**



**PL (2xTO-220)**

**Case-90 (TOP-3, TO-220)**



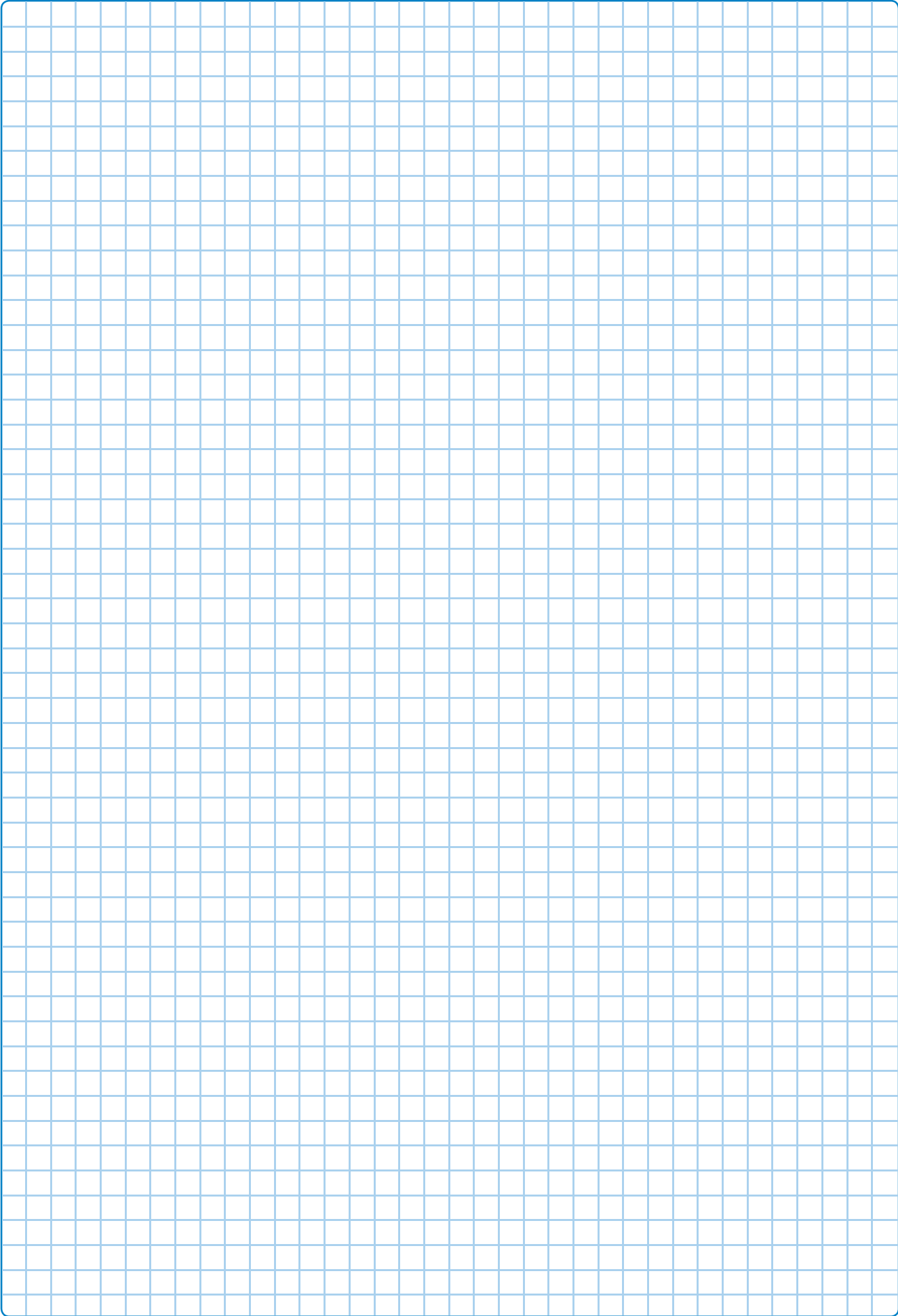
Bestellcode  
Ordercode

**V 4527 x**

Option	Lochbild Hole pattern	Wärmewiderstand Thermal resistance (K/W)
A	PL	7
B	Case - 90	7

Bitte „x“ durch die geeignete Option ersetzen  
Please replace „x“ with appropriate option

Alle Typen werden in schwarz eloxierter Ausführung geliefert  
All types will be delivered in black anodized finish



Finger-shaped

Attachable

Extruded  
with solderpins

Extruded  
standard length

Die-cast

Profiles

Mounting  
accessories

Distance spacers

Fans