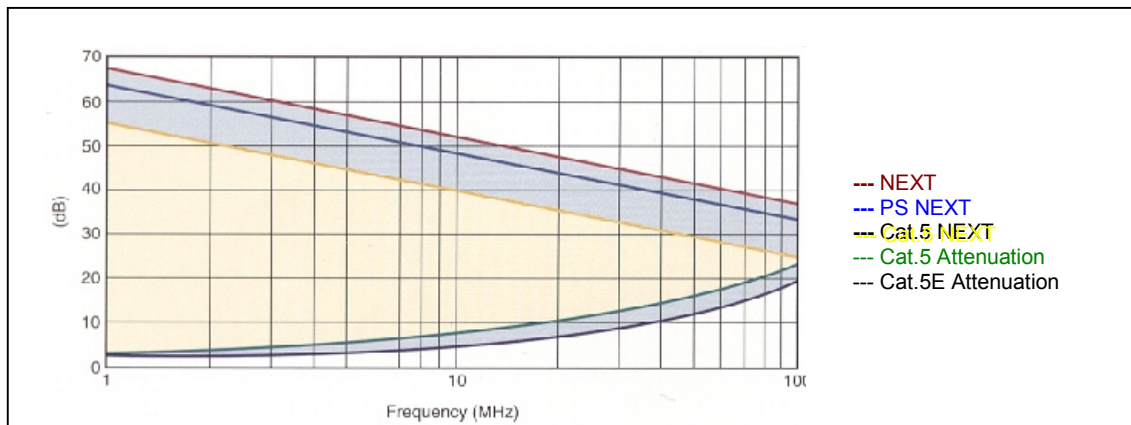


Enhanced Cat.5 - 110 Connect - Cabling System

Introduction:

The AMP NETCONNECT Enhanced Category 5 Cabling System **exceeds** all requirements as specified for the new **Enhanced Category 5 Standards** according TIA/EIA 568, ISO/IEC 11801 and EN 50173 and is therefore the solution to meet both your today's as well as your tomorrow's needs. This margin provides the end user peace of mind and protects his investment for a long term.

As Cables and Connecting Hardware must be designed to work together in a High Speed Cabling System, all parts of the AMP NETCONNECT Enhanced Category 5 Cabling System are engineered from a systems viewpoint.



Enhanced Category 5 LINK Performance

Enhanced Performance is important because in comparison to a classical Category 5 System the AMP NETCONNECT Enhanced Category 5 System provides more than 10 dB margin for NEXT at 100 MHz, a better PowerSum NEXT and a very low Skew. All these parameters are important for applications which deploy multi-pair transmissions like GigaBit Ethernet.

The AMP Enhanced Category 5 - 110 Connect - Cabling System is available **Shielded** (for FTP Cable) as well as an **unshielded** UTP System.

The AMP NETCONNECT Enhanced Category 5 System provides a performance margin giving greater signal integrity, increased reliability and fewer headaches in administering the cabling system

	Margin	Benefit
NEXT	12 dB	Less Crosstalk
PowerSum NEXT	6 dB	Better performance in multi-pair applications
Attenuation	2 dB	Stronger received signals
ACR	6 dB	Increased operating margin for LAN electronics

The system consists out of the following components:

- **Enhanced Category 5 Cable:** FTP (PVC & LSZH versions)
UTP (PVC & LSZH versions)
(shielded & unshielded)
- **Enhanced Category 5 Modular Jacks** PCB & Discrete Modular Jack versions
- **Patch Panel:** UTP: Discrete Modular Jack version
FTP: Single & Dual (FTP, UTP) with DIN Faceplates
Single (FTP, UTP) with 45x45 Faceplates
Single (FTP, UTP) with 50x25 Faceplates
- **Telecommunication Outelets:** Office Boxes (1 Port, 2 Ports, 4 Ports)

Enhanced Cat.5 - 110 Connect - Cabling System

AMP NETCONNECT Enhanced Category 5 System Cables

At the center of the system are the Enhanced Category 5 System Cables available both UTP and FTP. These high performance cable exceed the requirements for pair-to-pair as well as PowerSum near end crosstalk (NEXT). PowerSum NEXT is not only important for cable sharing, but also in emerging high speed 4 pair parallel applications like Gigabit Ethernet.

AMP Part Numbers:

AMP PN	Description
57535-2	Enhanced Cat.5 UTP Cable, PVC
57538-2	Enhanced Cat.5 UTP Cable, LSZH
219413-2	Enhanced Cat.5 FTP Cable, PVC
219420-2	Enhanced Cat.5 FTP Cable, LSZH

The AMP NETCONNECT Enhanced Category 5 System Cable Performance at 100 MHz

	AMP Enhanced Cat.5 Cable	Category 5 Requirements
typ. NEXT	44 dB	32 dB
PowerSum NEXT	38 dB	32 dB
max. Attenuation	22 dB	22 dB
ACR typ.	22 dB	10 dB
Skew	< 25 ns	45 ns



110 Connect Enhanced Cat.5 Modular Jacks

This new 8 position Modular Jack offers enhanced performance at both the component and the link level. Additionally, to simplify installation and to offer increased flexibility, these jacks allow for termination to either the T568A or T568B wiring pattern. The jack is fully compatible with existing AMP NETCONNECT accessories such as faceplates, wall boxes and patch panels.



AMP Part Numbers:

AMP PN	Description
406372-2	Enhanced Category 5, non keyed, UTP, universal wiring
1116515-1	Enhanced Category 5, non keyed, FTP, universal wiring

(different colours available upon request)

110 Connect Hardware Performance at 100 MHz

	Modular Jack	Patch Panel	Cat. 5 Requirements
NEXT	45.6 dB	44.8 dB	40.0 dB
PowerSum NEXT	42.0 dB	42.6 dB	40.0 dB
Attenuation	0.17 dB	0.17 dB	0.40 dB

Enhanced Cat.5 - 110 Connect - Cabling System

110 Connect Enhanced Patch Panels

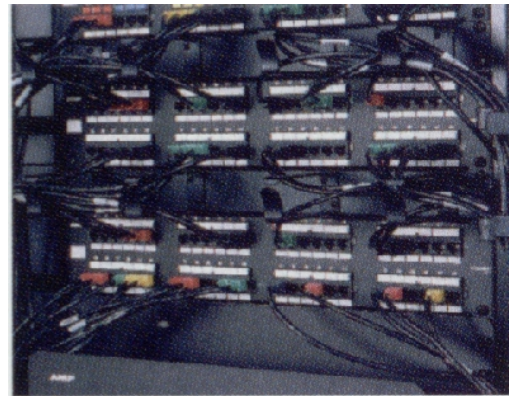
The Enhanced Cat.5 Patch Panels are available in 2 versions

- PCB Patch Panels for UTP Cable
- Modular Patch Panels for UTP & FTP Cable

The **PCB Patch Panels** combine the ease of a 110-style punch down block on the back with the easy plugability of the modular interface on the front into a ready to install patch panel. They provide a universal wiring for T568A & T568B

The **Modular Patch Panels** are a flexible design to accommodate, both shielded and unshielded Enhanced Modular Jacks.

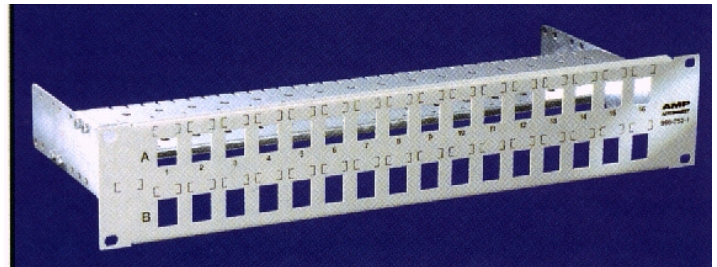
Both types of panels exceed the Enhanced Cat.5 specification according to ISO/IEC 11801 and EN50173



Enhanced Cat.5 PCB Patch Panel

AMP Part Numbers:

AMP PN	Description
406390-1	12 Port, Cat.5e, PCB Patch Panel, UTP
406330-1	24 Port, Cat.5e, PCB Patch Panel, UTP
406331-1	48 Port, Cat.5e, PCB Patch Panel, UTP
406332-1	96 Port, Cat.5e, PCB Patch Panel, UTP
966239-5	16 Port, Cat.5e, Modular Patch Panel, UTP
966240-5	32 Port, Cat.5e, Modular Patch Panel, UTP
966239-3	16 Port, Cat.5e, Modular Patch Panel shielded
966240-3	32 Port, Cat.5e, Modular Patch Panel shielded



Enhanced Cat.5 Modular Patch Panel

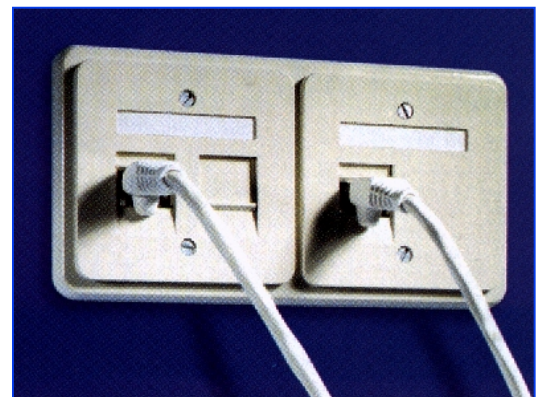
Enhanced Category 5 Telecommunication Outlets

Various Outlets for different applications are available as complete installation kits:

- DIN size outlets (Single & Dual)
- AMP Office Boxes (1, 2 or 4 Port)
- 45x45 Outlets for Legrand Trunking System
- 50x25 Outlets

AMP Part Numbers:

AMP PN	Description
966105-3	Dual Installation Kit, DIN size, shielded, almond
2-966105-3	Dual Installation Kit, Din size, shielded, white
966106-3	Single Installation Kit, DIN size, shielded, almond
2-966106-3	Single Installation Kit, DIN size, shielded, white
966105-5	Dual Installation Kit, DIN size, unshielded, almond
2-966105-5	Dual Installation Kit, DIN size, unshielded, white
966106-5	Single Installation Kit, DIN size, unshielded, almond
2-966106-5	Single Installation Kit, DIN size, unshielded, white
183885-2	AMP Office Box, 1 Port, including UTP Mod. Jack
558521-2	AMP Office Box, 2 Port, without Mod. Jack , almond
558522-2	AMP Office Box, 4 Port, without Mod. Jack , almond
183861-1	45x45 Single Faceplate without Mod. Jack , white
183956-1	45x45 Single UTP Installation Kit (incl. unshielded Mod. Jack), white
346856-1	50x25 Faceplate, without Mod. Jack, white
347021-1	50x25 UTP Installation Kit (incl. Unshielded Mod. Jack), white
1339044-1	50x25 UTP Installation Kit - Low Profile, white



Enhanced Cat.5 - 110 Connect - Cabling System

Don't forget the Patchcords

Patchcords are playing an important role when considering the channel performance of a cabling system. Only high quality connectors in combination with a high performance patchcable provide the end user best performance and highest reliability over a long term! Independent tests shows that Enhanced Patchcords provide better performance for your cabling system than standard ones.

Patented AMP manufacturing technologies create Patchcords that provide not only superior performance to any yet achieved outside the test labs, but also more consistent, controlled performance than standard cable assemblies.

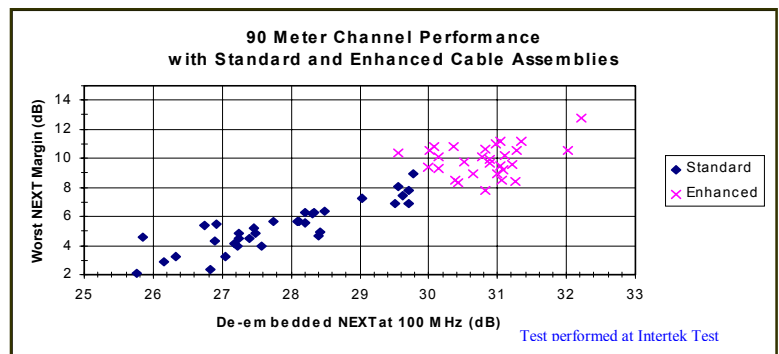


AMP Part Numbers:

AMP PN	Description
941761-x	UTP Enhanced Cat.5 Patchcord
1344357-x	FTP Enhanced Cat. 5 Patchcord

Available in different lengths (x):

-9	0.5 m	-3	4.0 m
-5	1.0 m	-8	5.0 m
-6	2.0 m	1-...-0	7.5 m
-7	3.0 m	1-...-1	10.0 m



..... and finally consider the warranty for your cabling system!

Some suppliers provide you a cable. Some other suppliers provide you connectors and connecting hardware.

AMP provides you a complete cabling system based on a more than **50 years experience in interconnection systems**. This means that all components of the AMP NETCONNECT Enhanced Category 5 Cabling System are designed together and perform together at the highest possible performance and reliability!

And for that reason, AMP NETCONNECT provides to you as the end user a **25 years warranty** for the complete cabling system, because we are sure that it performs within all specifications over that period of time.

This means you can rely completely on your cabling system and your network will run without problems and with low maintenance costs!

Contact us or our local partners in your country. We will support you any time!

