

# TRUSTED CONNECTIONS

YOUR PARTNER IN IT & AV SECURITY SOLUTIONS



**"THERE ARE  
ONLY TWO  
TYPES OF  
COMPANIES  
-THOSE  
THAT KNOW  
THEY'VE BEEN  
COMPROMISED  
AND THOSE  
THAT DON'T  
KNOW."**

**Dmitri Alperovitch,**  
Cyber Security Expert & Co-Founder of CrowdStrike





# INTRODUCING LINDY

## Who We Are

Founded in 1932, Lindy is a global leader in providing superior IT and AV connection technologies. With a rich history and a deep-rooted commitment to innovation, we consistently deliver high-quality, durable, and cutting-edge products and solutions to meet the evolving needs of our customers.

## Why Choose Lindy as Your Partner

Lindy offers reliable, high-performance security products tailored for the technology and AV markets. With extensive experience and strong customer support, our solutions protect critical infrastructure, providing excellent value and peace of mind for your customers.



# TRUST LINDY: QUALITY, SUPPORT, SERVICE, INTEGRITY



## Quality & Reliability

**Extended Warranties:** Up to 25-year warranties, reflecting our confidence in product durability.

**Award-Winning Products:** Recognised for outstanding performance and innovation.



## Reputation

**A Trusted Industry Leader:** With a global presence, our reputation speaks for itself. We are your trusted partner in the dynamic and demanding technology security sector, ensuring safety and reliability in every solution we provide.



## Technical Support

**Comprehensive Assistance:** Free pre- and post-sales support from our UK-based team of experts, available via phone, email, live chat and social media.



## Compliance

**Commitment to Sustainability and Ethics:** We adhere to stringent international environmental and social standards, including RoHS, REACH, and anti-slavery measures. This ensures that our products and solutions are not only effective, but also responsible and ethically sound.



## Availability & Fulfilment

**Rapid Delivery Options:** Same-day dispatch and next-day delivery, along with massive stock holdings, we make sure you have what you need, when you need it.

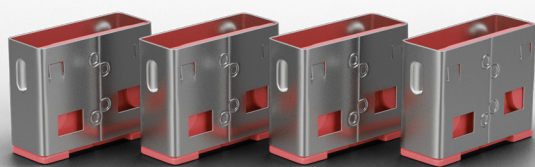
**Flexible Shipping Solutions:** We accommodate the unique scheduling needs of our customers with free, timed, next day and weekend tracked delivery options.



## Connect with Us

Discover how Lindy can strengthen your security infrastructure. Contact us today for a consultation or to arrange a product demonstration specifically tailored to meet your needs.





## USB TYPE A PORT BLOCKERS

USB Type A Port Blockers are useful little devices, used to physically prevent access to USB ports in any public environment.

When paired with corresponding colour-coded keys, these blockers become an effective solution, safeguarding USB ports from unauthorised insertion of pen drives, USB mass storage and mobile devices. Particularly useful for shared workstations and devices in public spaces, USB Type A Port Blockers contribute to maintaining the security and integrity of any technology setups.

### WHAT THEY DO

**CREATES** a physical barrier to unauthorised access to USB Type A ports

**EXPANDS** security level when used together with software solutions

**PROVIDES** quick and easy installation with no training required

**DESIGNED** to be used in combination with the key of the same colour

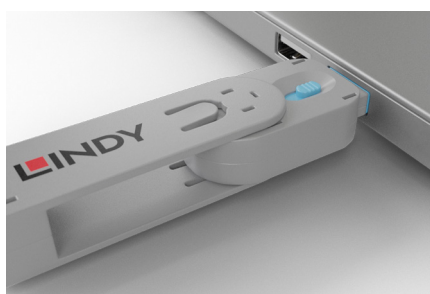
Watch the video



### HOW THEY WORK



1. A lock is attached to the key and inserted into a USB Type A port.



2. The sliding mechanism on the key is then released leaving the lock in place.



3. To remove the lock the key is inserted into the lock and pulled back. Simple!



**PINK, USB TYPE A**



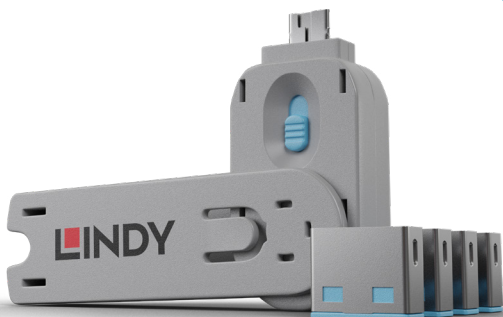
Pack of 4 Locks & Key	No. 40450
Pack of 10 Additional Locks	No. 40460
Additional Key	No. 40620

**GREEN, USB TYPE A**



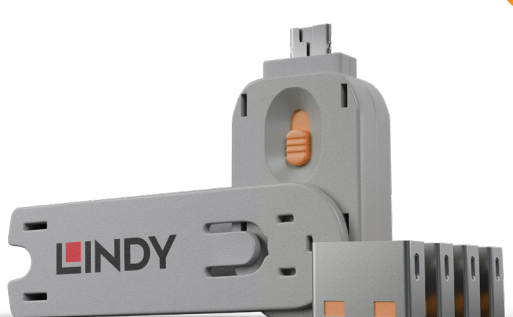
Pack of 4 Locks & Key	No. 40451
Pack of 10 Additional Locks	No. 40461
Additional Key	No. 40621

**BLUE, USB TYPE A**



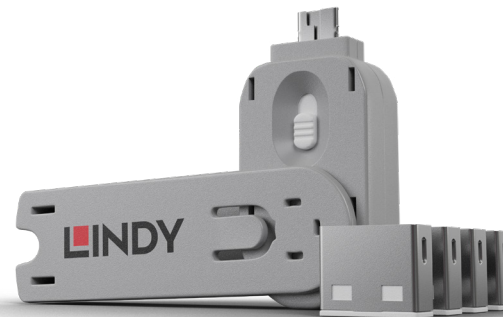
Pack of 4 Locks & Key	No. 40452
Pack of 10 Additional Locks	No. 40462
Additional Key	No. 40622

**ORANGE, USB TYPE A**



Pack of 4 Locks & Key	No. 40453
Pack of 10 Additional Locks	No. 40463
Additional Key	No. 40623

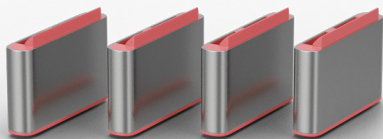
**WHITE, USB TYPE A**



Pack of 4 Locks & Key	No. 40454
Pack of 10 Additional Locks	No. 40464
Additional Key	No. 40624



Purchase additional locks to colour code your network  
or use additional keys to add more administrators.



# USB TYPE C PORT BLOCKERS

USB Type C Port Blockers are compact, practical tools that prevent unauthorized access to USB-C ports in shared or public environments.

Paired with matching colour-coded keys, these blockers offer a simple yet effective way to safeguard against the connection of unapproved devices, such as USB drives, external storage, and mobile devices. They are especially beneficial in securing shared workstations and public devices, playing a vital role in protecting sensitive data and ensuring the security of technology setups in educational institutions and other high-traffic areas.

## WHAT THEY DO

**CREATES** a physical barrier to prevent unauthorised access to USB Type C ports

**EXPANDS** security when combined with software solutions for enhanced protection

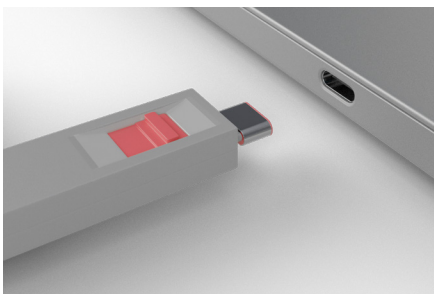
**PROVIDES** quick and easy installation requiring no specialized training

**DESIGNED** for use with a matching colour-coded key for secure operation

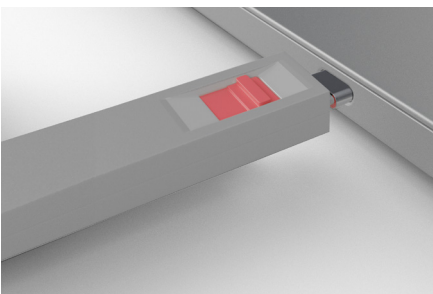
Watch the video



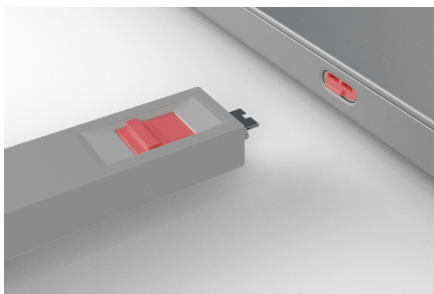
## HOW THEY WORK



1. A lock is attached to the key and inserted into a USB Type C port.



2. The sliding mechanism on the key is then released leaving the lock in place.



3. To remove the lock the key is inserted into the lock and pulled back. Simple!



**PINK, USB TYPE C**



Pack of 4 Locks & Key	No. 40425
Pack of 10 Additional Locks	No. 40437

**GREEN, USB TYPE C**



Pack of 4 Locks & Key	No. 40426
Pack of 10 Additional Locks	No. 40438

**BLUE, USB TYPE C**



Pack of 4 Locks & Key	No. 40465
Pack of 10 Additional Locks	No. 40466

**ORANGE, USB TYPE C**



Pack of 4 Locks & Key	No. 40428
Pack of 10 Additional Locks	No. 40440

**WHITE, USB TYPE C**



Pack of 4 Locks & Key	No. 40427
Pack of 10 Additional Locks	No. 40439



Purchase additional locks to colour code your network  
or use additional keys to add more administrators.







## RJ-45 PORT BLOCKERS

This set of four ten RJ-45 locks and one key can be used to easily block up to 10 open network ports and prevent users from connecting cables or devices without permission.

Watch the video



## WHAT THEY DO

**CREATE** a physical barrier to unauthorised access to network ports

**ENHANCES** security when paired with software solutions

**PROVIDE** quick and easy installation with no training required

**DESIGNED** to use in combination with the key of the same colour

## HOW THEY WORK



1. A lock is attached to the key, inserted into the RJ-45 port, and secured by releasing the sliding mechanism.



2. To remove the lock, insert the key and pull back. Simple!





**BLACK, RJ-45**



Pack of 10 Locks & Key	No. 47891
Pack of 20 Additional Locks	No. 47892
Additional Key	No. 47890



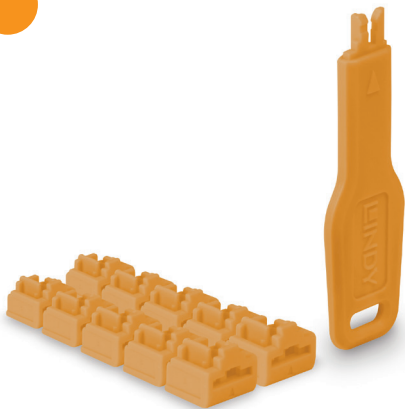
**GREEN, RJ-45**



Pack of 10 Locks & Key	No. 47894
Pack of 20 Additional Locks	No. 47895
Additional Key	No. 47893



**ORANGE, RJ-45**



Pack of 10 Locks & Key	No. 47897
Pack of 20 Additional Locks	No. 47898
Additional Key	No. 47896



**YELLOW, RJ-45**



Pack of 10 Locks & Key	No. 47900
Pack of 20 Additional Locks	No. 47901
Additional Key	No. 47899





SFP Port Locks Green, 10x + 1 Key	No. 47912
SFP Port Blocker Key, Green	No. 47911
SFP Port Locks Green 20pcs	No. 47913

# SFP PORT LOCKS

The Lindy SFP Port Locks are supplied in a pack of 10 with one key. These locks secure SFP module slots on network devices, such as switches, to prevent unauthorized access and tampering. They provide an extra layer of protection, particularly useful when all free ports are already safeguarded with RJ-45 port blockers. Ideal for maintaining network security and integrity in sensitive environments.

# WHAT THEY DO

- CREATE** a physical barrier to unauthorised access to SPF ports
- ENHANCES** security when paired with software solutions
- PROVIDE** quick and easy installation with no training required
- DESIGNED** to use in combination with the key of the same colour

# HOW THEY WORK



1. A lock is attached to the key and inserted into an RJ-45 port.



2. To remove, insert the key, twist and pull. Simple!





SD Port Blockers - Pack of 4 with 1 Key	No. 40478
SD Port Blockers (Without Key) - Pack of 10, White	No. 40479

# SD PORT BLOCKERS

SD Port Blockers can be inserted into SD card ports on memory readers, in cameras, and other devices. These devices provide a visual deterrent to anyone trying to copy data or viruses from, or to, an SD card. SD Port Blockers are available as a set of 1 key and 4 locks, or a pack of 10 additional locks.

## WHAT THEY DO

**CREATE** a physical barrier to unauthorised access to SD ports

**ENHANCES** security level when used together with software solutions

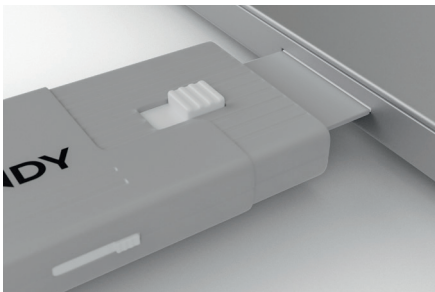
**PROVIDE** quick and easy installation with no training required

**DESIGNED** to use in combination with the key of the same colour

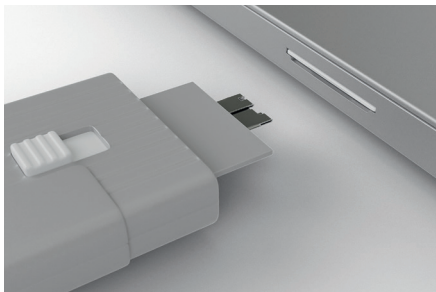
## HOW THEY WORK



1. A lock is attached to the key and inserted into an SD port.



2. The sliding mechanism on the key is then released leaving the lock in place.



3. To remove the lock the key is inserted into the lock and pulled back. Simple!

NEED TO EXTEND MULTIPLE  
USB DEVICES?



Use the 4-Port Hub Extensions to extend reach to multiple USB devices. 8m and 12m USB 2.0, and 10m USB 3.0 versions are available.

USB 3.0 A TO A  
ACTIVE EXTENSION SYSTEM PRO

Provides an extended connection between a computer and USB 3.0 device

Can be used standalone or daisy-chained to create bespoke extension systems of up to 40m  
USB A Male to A Female



5Gbps

8m	No. 43158
10m	No. 43157
15m	No. 43229
20m	No. 43361
30m	No. 43362
10m with 4 Port Hub	No. 43159

USB 2.0 A TO A  
ACTIVE EXTENSION SYSTEM PRO

Provides an extended connection between a computer and USB 2.0 device

Can be used standalone or daisy-chained to create bespoke extension systems of up to 60m  
USB A Male to A Female



480Mbps

8m	No. 42780
12m	No. 42782
30m	No. 42923
8m with 4 Port Hub	No. 42781
12m with 4 Port Hub	No. 42783

USB 3.2 GEN 1 C TO A  
ACTIVE EXTENSION SYSTEM PRO

Provides an extended connection between a USB Type C equipped computer and a USB Type A device

Can be used standalone or as part of the Lindy Active Extension System Pro (see above) to create bespoke extension systems of up to 40m  
USB C Male to A Female



5Gbps

5m	No. 43380
8m	No. 43381

USB 3.2 GEN 1 A TO C  
ACTIVE EXTENSION

Use as a single extension or is compatible with the USB 3.0 Extension System Pro when used as the last segment in a daisy chain

USB A Male to C Female



5Gbps

10m	No. 43376
20m	No. 43375



**5m USB 2.0 SLIM  
ACTIVE EXTENSION**



Chain up to 5 cables for a 25m reach  
Slim design eliminating the need for bulky plugs

**480Mbps**

No. 42817

**20m USB 2.0  
ACTIVE EXTENSION**



Chain 2 cables for a 40m reach

**480Mbps**

No. 42631

**10m USB 2.0  
ACTIVE EXTENSION 4 PORT HUB**



Built-in hub extends 4 USB 2.0 devices  
Chain 2 in series for a 20m reach  
USB 2.0 Type A Male to 4x Type A Female

**480Mbps**

No. 42635

**USB 3.0  
ACTIVE EXTENSION CABLES**



5m, 10m and 15m versions  
Chain 2 of the same cables together (to reach 10m, 20m or 30m)  
10m and 15m versions supports an AC adapter (not included) for use with high power devices

**5Gbps**

5m	No. 43155
10m	No. 43156
15m	No. 43099

**15m USB 3.0 SLIM  
ACTIVE EXTENSION**



For longer reach, chain 2 cables for 15m  
Slimmer design eliminating the need for bulkier plugs

**5Gbps**

No. 43322





**USB 3.2 GEN 1 C/A  
ACTIVE EXTENSION**



Available in 3m and 5m versions  
Supports 5Gbps data transfer only (no video support)  
Supports an AC adapter (not included) for high power devices  
USB Type C Male to Type A Female

**5Gbps**

3m	No. 43352
5m	No. 43344

**5m USB 3.2 GEN 1 C/A  
ACTIVE EXTENSION**



Stylish aluminium design  
Supports 5Gbps data transfer only (no video support)  
Supports an AC adapter (not included) for high power devices  
USB Type C Male to Type A Female

**5Gbps**

No. 43270

**5m USB 3.2 GEN 1 C/C  
ACTIVE EXTENSION**



Stylish aluminium design  
Supports 5Gbps data transfer only (no video support)  
Supports an AC adapter (not included) for high power devices  
USB Type C Male to Type C Female

**5Gbps**

No. 43271

**5M USB 3.2 GEN 2 C/C  
ACTIVE EXTENSION**



Extends a USB 3.2 device by 5m  
Supports 10Gbps data transfer only (no video support)  
Chain 2 cables for a 10m reach  
USB Type C Male to Type C Female

**10Gps**

No. 43364

**USB 3.2 GEN 2 C/C  
ACTIVE CABLE (DATA+VIDEO)**



Available in 3m and 5m versions  
Supports 10Gbps data and 8K UHD video  
USB Type C Male to Type C Male

**10Gps**

3m	No. 43348
5m	No. 43308

**50m USB 1.1 CAT.6  
EXTENDER**



USB bus powered; supports  
an AC adapter (not  
included) for use with high  
power devices  
Transmitter: USB Type A  
Male  
Receiver: USB Type A  
Female

**12Mbps**

No. 42805

**60m USB 1.1 CAT.6  
EXTENDER BASIC**

USB bus powered  
Transmitter: USB Type A Male  
Receiver: USB Type A Female



**12Mbps**

No. 43365

**50m USB 2.0 CAT.6  
EXTENDER**



AC adapter power supply  
included  
Transmitter: USB Type A  
Male  
Receiver: USB Type A  
Female

**480Mbps**

No. 42693

**100m USB 2.0 CAT.6  
EXTENDER**

AC adapter power supply included  
Transmitter: USB Type A Male  
Receiver: USB Type A Female



**480Mbps**

No. 42674

**60m 4 PORT USB 2.0 CAT.6  
EXTENDER**

Built-in hub extends 4 USB 2.0 devices  
AC adapter power supply included  
Transmitter: USB Type A Male  
Receiver: 4x USB Type A Female



**480Mbps**

No. 42679



**50m USB 2.0 CAT.6 EXTENDER, WITH POC, INDUSTRIAL**

Features Power over Cable to power a device at the remote end (power supply included)  
Transmitter: USB Type A Male (A to B cable included)  
Receiver: USB Type A Female



**50m 2 PORT USB 2.0 CAT. 6 EXTENDER, WITH POC, INDUSTRIAL**

Built-in hub extends 2 USB 2.0 devices  
Features bidirectional Power over Cable to power a device from the transmitter or at the remote end (power supply included)  
Transmitter: USB Type A Male (A to B cable included)  
Receiver: 2x USB Type A Female



**50m 4 PORT USB 2.0 CAT.6 EXTENDER WITH POC, INDUSTRIAL**

Built-in hub extends 4 USB 2.0 devices  
Features Power over Cable to power connected devices at the remote end (power supply included)  
Transmitter: USB Type A Male (A to B cable included)  
Receiver: 4x USB Type A Female



**140m 4 PORT USB 2.0 CAT.6 EXTENDER, INDUSTRIAL**

Built-in hub extends 4 USB 2.0 devices  
Power supply included  
Can be used with a Signal Repeater, No. 42709, for distances up to 280m  
Transmitter: USB Type A Male (A to B cable included)  
Receiver: 4x USB Type A Female



**LOCK. CONNECT. PROTECT.**

With easy plug-and-play installation, Lindy Cat.6A Locking Network Cables provide a comprehensive solution for those seeking both convenience and uncompromised security in their network connections.

**Available in lengths from 0.3m To 20m**

Watch the video





# POWERING SECURITY 10 DEVICES AT A TIME

## 10 PORT CHARGING STATION

The Lindy 10-port charging station is essential for the security sector, ensuring critical tablets and smartphones are always fully charged and ready. This reliable, centralized solution minimizes downtime, reducing the risk of lapses in security coverage and maintaining the integrity and readiness of security systems.

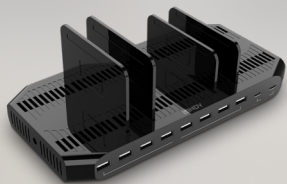
Simultaneous charging of up to 10 critical security devices

Max. 2.4A charging per port, simultaneous use of all 10 ports allows max. 1.8A charging per port

Smart charging function adjusts the current for optimum, safe charging

Best-selling product is widely used in education, industry, and public sectors, particularly valued for its security applications

120W 10 Port and 160W 6 Port versions also available



120W, 10 Port



160W, 6 Port



96W, 10 Port

96W 10 Port USB Charging Station	No. 73309
120W 10 Port USB Charging Station	No. 73435
160W 6 Port USB Charging Station	No. 73436

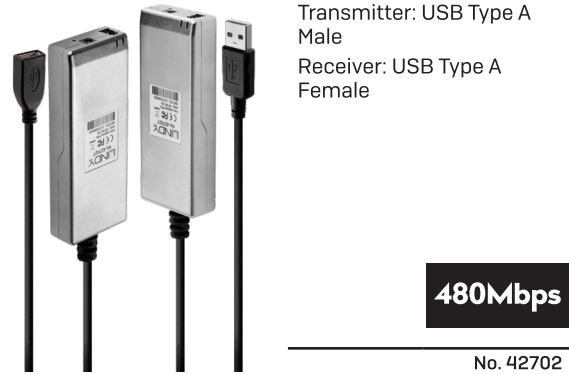
**FIBRE OPTIC USB 3.0  
EXTENSION CABLE**

Available in 30m, 50m and 100m versions  
Integrated fibre optic cable - no additional fibre connection needed  
50m version uses hybrid copper and fibre cable construction  
Chain 3 cables for up to 90m reach [No. 43345] or 300m [No. 43346]  
USB Type A Male to Type A Female  
USB Type A connection for power from a USB port



**200m FIBRE OPTIC USB 2.0  
EXTENDER**

Uses LC simplex fibre cable  
AC adapter power supply included  
Transmitter: USB Type A Male  
Receiver: USB Type A Female



**200m FIBRE OPTIC USB 3.0  
EXTENDER**

Uses LC duplex fibre cable  
AC adapter power supply included  
Transmitter: USB Micro-B Female (cable not included)  
Receiver: USB Type A Female



**350m FIBRE OPTIC USB 3.0  
EXTENDER**

Uses LC duplex fibre cable  
AC adapter power supply included  
Transmitter: USB Micro-B Female (cable not included)  
Receiver: USB Type A Female



**100m FIBRE OPTIC USB 3.2 TYPE C  
EXTENDER**

Uses LC duplex fibre cable  
Supports 10Gbps data transfer only (no video support)  
AC adapter power supply included  
Transmitter: USB Type C Male  
Receiver: USB Type C Male



4K KVM OVER IP EXTENDER SYSTEM

Extends 4K30 HDMI®, USB HID, and IR over an IP network, providing high-resolution video and peripheral control  
Point-to-point and multipoint configurations with a maximum distance of 150m  
IR signal forwarding for remote control functionality  
Compatible with Gigabit Ethernet for efficient data transfer  
HDCP 1.4 support for secure content transmission  
Transmitter and Receiver modules sold separately; choose the number of Receivers according to your needs



4K

Transmitter	No. 38264
Receiver	No. 38265

120m CAT.6 HDMI & USB KVM EXTENDER



1080P

Extends HDMI® and USB signals up to 120m using Cat.6 network cable  
Supports HDMI® resolutions up to Full HD (1080p)  
Includes HDMI® loop-out port on the transmitter to connect an additional display  
Features PoC (Power over Cable) for power supply from only one side of the installation

No. 39381

70m CAT.6 HDMI 4K60, USB & AUDIO KVM EXTENDER



4K

Extends HDMI® and USB HID signals up to 70m using a single Cat.6 cable  
Supports HDMI® resolutions up to 4K60 4:4:4 8bit with HDR  
Offers EDID management and includes an HDMI® loop-out port on the transmitter for an additional display  
Features PoC (Power over Cable), requiring power supply from only one side of the installation

No. 39383

150m HDBASET HDMI 4K60 & KVM EXTENDER SYSTEM

High-performance Lindy 150m Cat.6 HDMI® 4K60, IR, RS232 & Audio HDBaseT KVM system extends AV and data signals up to 150m using Cat.6 cable  
The system consists of separate Wall Plate Transmitter and Receiver modules (each sold separately)  
Supports 4K Ultra HD and HDR for high-quality, immersive visuals  
Features Power over Cable (PoC) allowing single power supply installations via Cat.6 cable for simpler setup  
Supports USB 2.0 devices, such as mice, keyboards, and other peripherals, enabling KVM control from a remote PC or laptop, as well as facilitating data transfer  
Bi-directional IR ports enable remote control of both source and display devices  
Compatible with a wide variety of HDBaseT devices



4K

HDBaseT Wall Plate HDMI 4K60 & KVM, Transmitter	No. 38387
HDBaseT HDMI 4K60 & KVM, Receiver	No. 38389



**70m CAT.6 HDMI 4K30 & IR EXTENDER WITH POC & LOOP OUT**

Extends HDMI® & IR Signals up to 70m using a single Cat.6 Cable  
Supports resolutions up to 4K30 4:4:4 8bit  
Features a loop-through HDMI® output on the Transmitter for local monitoring



No. 38208

**50m CAT.6 HDMI 4K60 & IR EXTENDER WITH POC & LOOP OUT**

Extends 4K HDMI® 18G signals over 50m distances with standard network cable  
Supports resolutions up to 4K60 4:4:4 8bit, with support for HDR  
An HDMI® loop-through output creates an additional viewing zone with a local display



No. 38205

**HDMI & IR OVER IP SYSTEM**

Extends HDMI® and IR signals over an IP network  
Supports resolutions up to 1080p Full HD  
Allows point-to-point or multipoint configurations  
Requires a Gigabit Ethernet network for optimal performance  
Features PoE (Power over Ethernet) for simplified installation  
Compatible with existing network infrastructure  
Additional receiver modules available



HDMI & IR Over IP System	No. 38398
Additional Receiver	No. 38399

**2 PORT HDMI 4K60, USB 2.0 & AUDIO KVM SWITCH**

Controls two HDMI® equipped PCs from a single keyboard, mouse and monitor  
Switches via the unit's push button or keyboard hotkeys  
Supports HDMI® 18G resolutions up to 4K60 4:4:4 with HDR  
Features 3.5mm stereo audio ports to connect microphone, speakers or headphones



No. 32809





**NOTEBOOK SECURITY CABLE**

Physically secures a laptop or notebook computer to a fixed object, such as a desk or table, to prevent theft  
Includes two keys for added convenience and security  
Heavy-duty steel cable with plastic cover for durability  
Compatible with the security slot found on most laptops and accessories



No. 21150

**CABLE ADAPTER TETHERS, PACK OF 4**

Secure adapters to cables with these tethers to prevent loss or misplacement  
Attach to a variety of cable types and connectors for versatile use  
Utilises durable materials for long-lasting security and reliability  
Ensure organized and efficient cable management with these convenient tethers



No. 40774

**USB 2.0 SMART CARD READER**

Facilitates secure identification and access to systems and payment services  
USB 2.0 interface for easy connection to computers  
Compatible with a wide range of smart cards  
Compact and lightweight design for portability



No. 42768



# IPOWER SWITCH CLASSIC 8

## REMOTE POWER MANAGEMENT FOR UP TO 8 DEVICES



### LOCAL POWER. GLOBAL CONTROL.

The Lindy IPower Switch Classic 8 is the remote power management solution for seamlessly controlling the power status of 8 connected devices.

Control from anywhere in the world with your laptop and an internet connection! Now, system administrators can easily monitor and switch power to security systems, servers, workstations, routers and much more. The essential tool for remote troubleshooting and maintenance.

### THE POWER TO PERFORM. ANYWHERE.



Power control of your devices from anywhere in the world with an internet connection



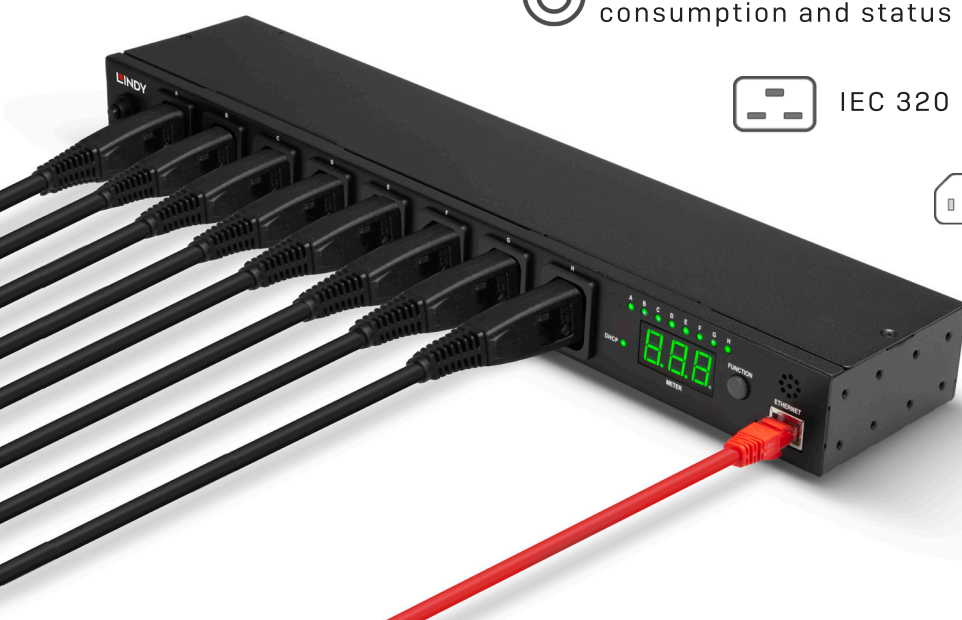
Reboot, switch on and off, monitor power consumption and status



IEC 320 C20 mains power input port



8x IEC C13 mains power output



**13A/16A** For use with a 13A or 16A circuit  
- 2400W, 240V 10A per port  
- Total switched power of 3120W



**"AN OUNCE OF  
PREVENTION IS  
WORTH  
A POUND OF  
CURE."**

**Benjamin Franklin,**  
Founding Father of the United States



**United Kingdom**

Lindy Electronics Ltd.  
Sadler Forster Way  
Teesside Industrial Estate, Thornaby  
Stockton-on-Tees, TS17 9JY

t: 01642 754000

e: [sales@lindy.co.uk](mailto:sales@lindy.co.uk)



**Lindy International (Worldwide)**

Lindy Electronics Ltd.  
Sadler Forster Way  
Teesside Industrial Estate, Thornaby  
Stockton-on-Tees, TS17 9JY

t: +44 1642 754020

e: [sales@lindyint.com](mailto:sales@lindyint.com)



**LINDY GCC**

Lindy Electronics L.L.C  
1004 Fahidi Heights  
Al Hamriya  
Dubai, UAE

t: +971 54 2455158

e: [sales@lindy.ae](mailto:sales@lindy.ae)