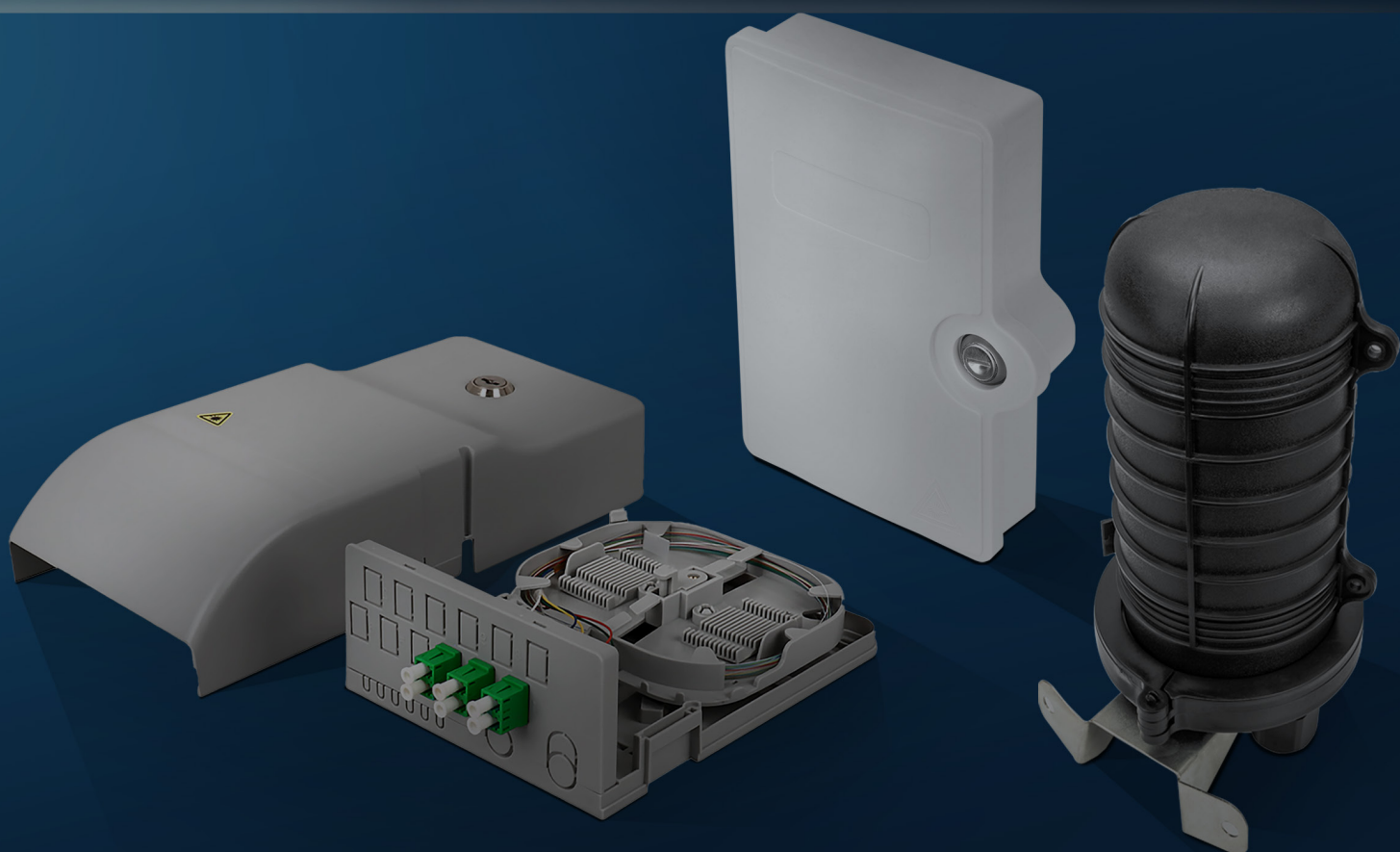


DIGITUS[®]

Innovative FTTH technologies:

High-speed fiber optic networks for
every home



FIBER OPTICS

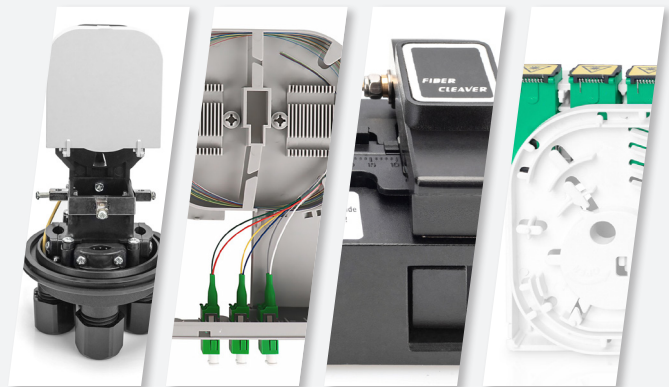
FTTH infrastructure solutions - fiber optic directly to the home

The requirements for extending the fiber optic network into the home or office are growing steadily. The increased demand for working from home and the use of streaming services are current examples of the rapid increase in data traffic in the private sphere. To meet these conditions, products are needed that enable simple and efficient installation of fiber optic networks. With its new FTTH solutions, DIGITUS® offers the perfect equipment for your

network technology, making it easy to expand and complete the network in your home or office. The range includes fiber optic cables in various lengths, home distribution units, installation kits, splice closures and other FTTH accessories for the simple installation of a fiber optic network in the home or office.

FTTH accessories for easy installation

DIGITUS® offers various accessories to make fiber optic installation in the private sector as simple as possible. Fiber optic field connectors and special tools, such as fiber optic cable cutters, cable strippers or Kevlar scissors, enable a quick and uncomplicated connection directly on site.



LOOKING FOR SOMETHING **SPECIFIC?**

Always find the right product with our **product finder!**

Scan me!



assmann.com/en/services-tools/product-finder/



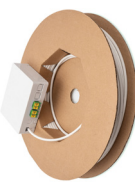
DIGITUS® PRODUCT OVERVIEW



DIGITUS® FIBER OPTIC SPLICE CLOSURE

Splice closures are highly secure devices that support the distribution, splicing and storage of fiber optic cables outside the building. They are used to provide space and protection for spliced cables.

DN-941091 | Page 9



DIGITUS® FTTX INSTALLATION KIT

Wall sockets offer the possibility of easily extending and completing the fiber optic network within the home. They can be installed at a specific point for connecting fiber optic cables to the subscriber.

DN-948050 | Page 7



DIGITUS® FTTH HOME DISTRIBUTION UNIT

Distribution points support the smooth transition of fiber optic networks into the building. Fully equipped units provide the flexibility and readiness to connect the last mile within the building.

DN-949103 | Page 4



DIGITUS® FTTH CONNECTION CABLE

The fiber optic cables, which are available in various lengths, enable subscriber connections by connecting the optical distribution point in the building to the optical telecommunications socket in the house.

DK-3904LCA-30 | Page 10



DIGITUS® HOME DISTRIBUTION UNIT

de.assmann.shop/en/

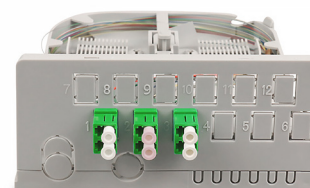
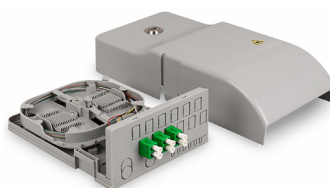


Learn more under:

DIGITUS® FTTH Home Distribution Unit, 3 x LC/APC duplex

**FTTH Home Distribution Unit, 3 x LC/APC Duplex OS2, IP54,
Splice ready**

It offers a wide range of functions which is needed in your FttH broadband project in a compact and smart design.



Technical details

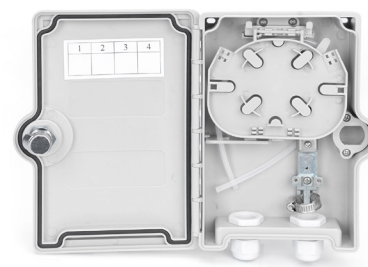
- Extremely compact / variable transfer unit
- Multifunctional base plate
- Various cable entry options
- Three flexible head receptacles with splice receptacles for crimp splice protection
- Patch cord entry protected by long cover
- PLC splitter receptacle
- Lockable via built-in lock
- Bending radius optimized "stressless" fiber guide
- Suitable for wall mounting
- Pigtails: mounted, set off, color coded according to IEC 60304 and stored in the cassette

DN-949103 | EAN: 4016032487630 | FTTH Home Distribution Unit, 3 x LC/APC duplex

DIGITUS® FTTH Outdoor Distribution Box for 2 SC/SX or LC/DX couplers

Outdoor FTTH Box, IP65 for 2x SC/SX adapters or 2x LC/DX

**FTTH Distribution Box for Outdoor IP 65; entry for 2 SC Simplex Adapter or 2 LC Duplex Adapter and 4 splices possible; size:
215 x 150 x 50 mm**



Technical details

- 2 SC Simplex or 2 LC Duplex couplers Holder
- Splice Protection Holder for 2 Splices
- Key lockable
- Cable overlength tray
- 2 cable entry PG 21
- Fixing material
- Splice protection
- IP 65

DN-968912 | EAN: 4016032370994 | FTTH Outdoor Distribution Box for 2 SC/SX or LC/DX couplers

DIGITUS® FTTH Outdoor Distribution Box for 6 SC/DX

Outdoor FTTH Box for 6x SC/DX adapter, IP65

FTTH Outdoor Distribution Box IP 65 for 6 SC Duplex Adapter



Technical details

- 6 SC Duplex couplers Holder
- Splice Protection Holder for 12 Splices
- Key lockable
- Cable overlength tray
- 2 cable entry PG 21
- 1 cable entry PG 13.5 mm
- Fixing material
- Splice protection
- IP 65

DN-968913 | EAN: 4016032371007 | FTTH Outdoor Distribution Box for 6 SC/DX, IP65

FIBER OPTIC: THE CONNECTION FOR THE FUTURE!

Unlimited Internet connection performance



ISDN

up to
0,06 Mbit/s

- switched off since 2022



DSL

up to
16 Mbit/s

- slow up- & download



VDSL

up to
250 Mbit/s

- improved up- & download



FIBER OPTIC

up to

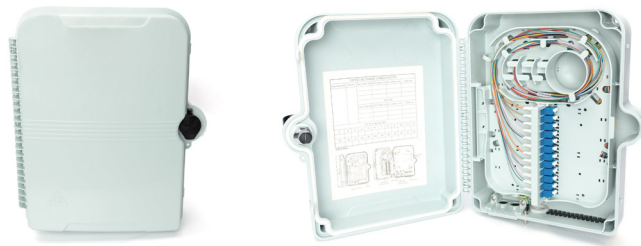
1.000 Mbit/s

- ✓ always full bandwidth
- ✓ stable performance
- ✓ less susceptible to interference
- ✓ signal right into the residential unit

DIGITUS® FTTH Distribution Box for 16x LC/Duplex or 16x SC/Simplex

FTTH Distribution Box for 16x SC/SX or 16x LC/DX with key

FTTH Outdoor Distribution Box IP65 with Key Lock for 16x SC Simplex or 16x LC Duplex Adapter; Size 280x230x110 mm



Technical details

- 16 SC Simplex or 16 LC Duplex couplers Holder
- Splice Protection Holder for 32 Splices
- Cable overlength tray
- 2 cable entry PG 13,5
- 16 cable exit 2-5 mm
- Fixing material
- Splice protection

DN-968916 | EAN: 4016032371045 | FTTH Distributions Box für 16x LC/Duplex oder 16x SC/Simplex

DIGITUS® FTTH Outdoor Distribution Box for 24 LC/Duplex, SC/ Simplex couplers

Outdoor FTTH Distribution Box for 24 SC/SX or LC/DX adapters and 24 splices

The distribution unit with internal holder for 24x LC (DX) or SC (SX) couplers is used for fiber optic distribution. An overlength tray for pigtails and various cable inlets ensure the best possible cabling options



Technical details

- 24 SC Simplex or 16 LC Duplex couplers holder
- Splice Protection Holder for 48 Splices
- Cable overlength tray
- 2 cable entry PG 13,5
- 27 cable exit 2-5 mm

DN-968911 | EAN: 4016032370987 | FTTH Outdoor Distribution Box for 24 LC/Duplex, SC/ Simplex couplers



Scan me!



SEE HOW IT WORKS!

We show and explain our products and how they work. Simply scan the QR code or visit our YouTube channel @AssmannDIGITUS!

DIGITUS® FTTH Micro Splice Distributor for 2 x SC SX / 2 x LC DX

Micro Fiber Optic Distribution Box 4x fibers, w/o adapters for 2x SC SX, 2x LC DX

Micro Splice Distributor for 2 x SC Simplex, 2 x LC Duplex Plug Connections



Technical details

- Suitable for splice or plug connections
- Suitable for 2 x SC Simplex or 2 x LC Duplex connectors / couplings
- Including mounting material, cable feedthrough grommets & splice holder
- Dimensions: 160 x 110 x 30 mm (L x W x H)
- Weight: 179 g (base plate, center plate, cover)
- Color: RAL 7035 (light gray)

DN-931091 | EAN: 4016032466215 | FTTH Micro Splice Distribution for 2 x SC SX / 2 x LC DX

DIGITUS® FTTH Micro Splice Box for 12 (24) x Splice Connections with Splice Cassette

Micro Fiber Enclosure, 12x Fibers, splice tray incl. Splice holder for crimp splice protection

Micro splice box suitable for holding up to 24 splice connections include splice cassette & splice holder



Technical details

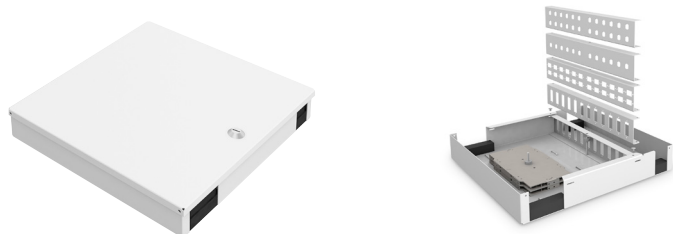
- Suitable for up to 24 splice connections
- Including two splice holders for 12 splice connections each
- Suitable for wall mounting
- Cable entry points 2 x each side or on the back
- side optional
- Including mounting material, cable feedthrough grommets & splice holder
- Dimensions: 160 x 110 x 30 mm (L x W x H)
- Weight: 170 g (base plate, splice tray, cover)
- Color: RAL 7035 (light gray)

DN-931092 | EAN: 4016032466222 | FTTH Micro Splice Box for 12 (24) x Splice Connections with Splice Cassette

DIGITUS® Fiber Optic Unibox for wall mounting, medium

FO wall mounting Unibox Medium 280 x 320 x 54 mm, grey (RAL 7035)

Compact splice box for wall mounting



Technical details

- For up to 48 fibers
- Pre-assembled singlemode, LC/APC variant possible
- Lockable (incl. 2x keys)
- Sturdy cold-rolled sheet steel
- Optional mounting of up to 4 splice cassettes
- Integrated mounting fixtures for cable ties
- Various adapter plates available for couplings
- Mounting material included (4x dowels, screws, washers, cable ties)
- Weight: 2.0 kg (net); 2.1 kg (gross)
- Coloring with powder coating in gray (RAL 7035)
- Dimensions (H x W x D): 280 x 320 x 54 mm

DN-96800M-2 | EAN: 4016032466130 | Fiber Optic Unibox for wall mounting, medium

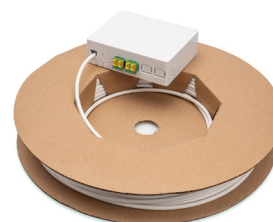
DIGITUS® DISTRIBUTION LIST



DIGITUS® FTTX Installation Kit, Pre-assembled, 4-Core, LC/APC connector, 30 m

FTTX - Installation Kit, 4-Core, LC connector 30 m, APC, NE4

The compact FTTH Kit with preassembled fiber optic laying cable on one side is ideal for the installation of high-speed fiber optic connections within the house for the designated network level 4. The fiber optic laying cable is contained in a roll of car



Technical details

- Termination box for FTTH applications
- 2x LC-APC duplex fiber optic coupler with shutter
- Coupler shutter ensures laser protection and dust protection
- Adapter Type : LC/APC Duplex
- Dimensions (H*W*D) : 100 * 80 * 30 mm
- Color : White

DN-948030 | EAN: 4016032493723 | FTTX Installation Kit, Pre-assembled, 4-core, LC/APC connector, 30 m

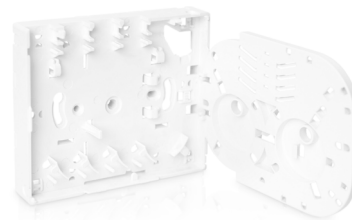
DN-948050 | EAN: 4016032487098 | FTTX Installation Kit, Pre-assembled, 4-core, LC/APC connector, 50 m

DN-948070 | EAN: 4016032487098 | FTTX Installation Kit, Pre-assembled, 4-core, LC/APC connector, 70 m

DIGITUS® FTTX Enclosure, empty for 4 x SC SX, LC DX couplers

FTTX Enclosure, empty for 4x SC SX, LC DX surface and DIN-rail mount

FTTX housing for fiber splices, terminations, storage and connections in a compact protective housing



Technical details

- Suitable for 4 ports: 4 x SC SX / 4 x LC DX (without flange)
- Integrated splice cassette
- Protection type: IP45
- Installation: Wall or profile rail (DIN rail)
- Suitable for single-mode and multi-mode fiber optic cables
- Operating temperature: -40°C ~ +85°C

DN-931093 | EAN: 4016032466529 | FTTX Enclosure, empty for 4 x SC SCX, LC DX couplers

DIGITUS® Wall Outlet (FTTH) for 2x SC Simplex/LC Duplex

Wall Outlet (FTTH) for 2x SC Simplex, LC Duplex 2x splice holder, 19x86x86mm, grey (RAL 7035)

DIGITUS® Optical Termination Boxes are made for high demand IT-Infrastructure Solutions - designed and developed on highest standards.



Technical details

- Compact & economic design
- Allows cable entry from both sides
- Removeable cover for easy access
- Wall mounting
- Dimensions (HxWxD): 19x86x86 mm
- Cable ports: 4 cable ports (for cables with max. diameter of 5 mm)
- Capacity: 2 splices

DN-931087 | EAN: 4016032368045 | Wall Outlet (FTTH) for 2x SC Simplex/LC Duplex

DIGITUS® FTTX Enclosure with 4 x SC SX couplers

FTTH Outlet, with 4x SC (APC) SX adapter surface and DIN-rail mount

FTTX housing for fiber splices, terminations, storage and connections in a compact protective housing



Technical details

- Suitable for 4 ports: 4 x SC SX (integrated) / alternative: 4 x LC DX (not incl.) (without flange)
- Integrated splice cassette
- Protection type: IP45
- Installation: Wall or profile rail (DIN rail)
- Suitable for single-mode and multi-mode fiber optic cables
- Return loss: >50dB(UPC), 60dB(APC)

DN-931094 | EAN: 4016032466536 | FTTX Enclosure with 4 x SC SX couplers

DIGITUS® FTTH Enclosure with 2 x LC/APC DX couplers

FTTH Enclosure, with 2x LC(APC) DX adapter Surface mount

FTTH wall outlet designed minimalistically for distribution of up to 4 fibers. The compact protective housing is perfect in FTTH and office premise cabling for fiber splices, terminations and connections.



Technical details

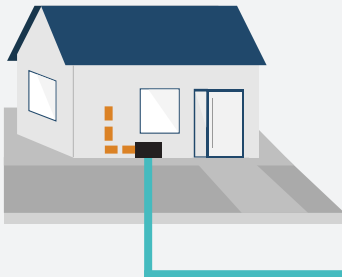
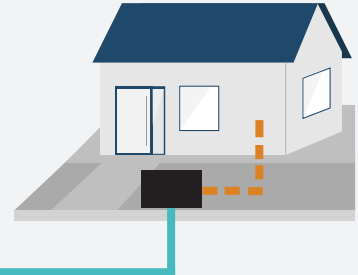
- Suitable for 2 ports: 2 x LC/APC Dx (integrated)
- Integrated splice cassette
- Protection Type: IP45
- Installation: Wall
- Suitable for single-mode: LC/APC Kabel
- Operating temperature: -40°C ~ +85°C

DN-931096 | EAN: 4016032494676 | FTTX Enclosure with 2 x LC/APC DX couplers

FTTH, FTTB, FTTC

For fiber optic connections, a distinction is made between FTTC, FTTB and FTTH. The decisive factor here is the location to which the fiber optic cable was laid.

With Fiber to the Curb (FTTC), the fiber optic cable is literally laid right up to the curb. There, the data is transmitted from distribution boxes to the respective buildings via copper cables. Due to the use of copper, the lines are generally slower and more susceptible to interferences.



With fiber to the building (FTTB), the fiber optic cable does not first run into a distribution box, but directly into the respective building. There, the data is then routed to the apartments via copper cables. This is where the disadvantages of copper cables come into play again.

With Fiber to the Home (FTTH), the fiber optic cable is laid directly to the home. By dispensing with copper cables, the performance of the line is not restricted. FTTH is therefore the most stable, fastest and most modern fiber optic connection.



DIGITUS®

FIBER OPTIC CABLE

DIGITUS® FTTH Installation Cable, Preassembled on one end, 4-fibre, LC/APC connector, length 30 / 50m

FTTH Installation Cable, SM, 4 core, LC/APC, G.657. A2, 30 / 50m

The preassembled fiber optic installation cable is ideal for the connection between Home Distribution Unit and Subscriber wall outlet.



Technical details

- Connecting cable for FTTH applications
- 4 fibers, 9/125µm G.657A2 bend-optimized
- One side: Splice end
- One side: 4 LC/APC connectors preassembled
- Cable design: I/A-V(Q(ZN))H
- Color: White

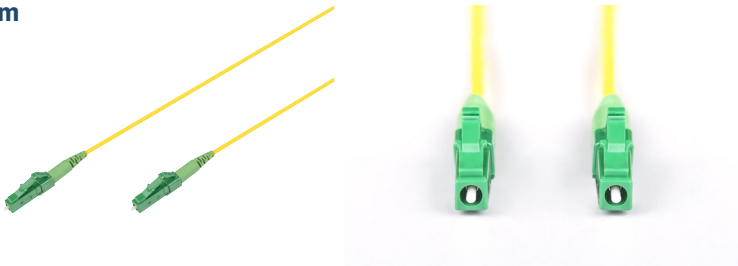
DK-3904LCA-30 | EAN: 4016032494652 | FTTx Installation Cable, Preassembled on one end, 4-fibre, LC/APC connector, 30 m

DK-3904LCA-50 | EAN: 4016032494669 | FTTx Installation Cable, Preassembled on one end, 4-fibre, LC/APC connector, 50 m

DIGITUS® Fiber Optic Simplex Patch Cable, Singlemode, LC/APC - LC/APC, 1 m, 3 m, 5 m

FO patch cord, SM, Simplex, LC/APC to LC/APC G657.A02, 1m, 3m, 5m

High-quality fibre simplex patch cables offer an excellent connectivity option for indoor and FTTx applications. The longevity of cables is ensured by reliable connector performance.



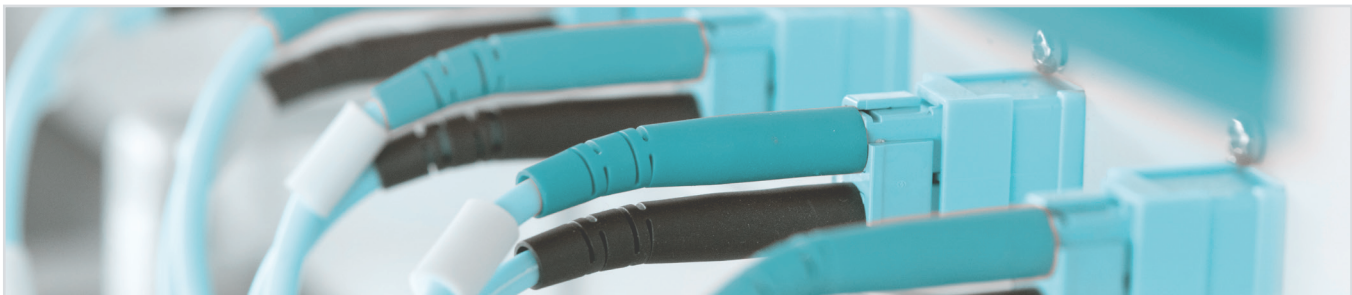
Technical details

- High flexibility
- Bend insensitive
- High precision and low insertion loss
- Compliant with G.657.A2
- Fiber type : Singlemode 9/125
- Number of fibers: 1
- Cable structure : Simplex
- Connector 1 type : LC/APC
- Sheath color : Yellow
- Color cable: yellow
- Working temperature : -20 - 70 °C
- Cable diameter: 2 mm

DK-2933-01-APC-SX | EAN: 4016032492825 | FO Simplex Patch Cable, Singlemode, LC/APC-LC/APC, 1 m

DK-2933-03-APC-SX | EAN: 4016032492832 | FO Simplex Patch Cable, Singlemode, LC/APC-LC/APC, 3 m

DK-2933-05-APC-SX | EAN: 4016032492849 | FO Simplex Patch Cable, Singlemode, LC/APC-LC/APC, 5 m



DIGITUS® SPLICE CLOSURES & ACCESSORIES



DIGITUS® FIBER OPTIC SPLICES

DIGITUS® Fiber Optic Splice Closure, 48 cores, dome-shaped

Mechanical fiber optic dome closure for max. 48 fibers

The robust design makes the closure resistant to harsh environments and intense climate changes. The flexible arrangement of the splice cassettes allows individual operation of each optical cable and fiber strand.



Technical details

- When the sleeve is mounted on a pole made of metal, there is a direct conductive connection
- It can bear the tensile force of at least 1000N
- Max Capacity: 48 Cores
- Number of Cable Entrance/Exit : 1:3 or 2:2
- Diameter of Cable : 4 small round ports (16mm)

DN-941091 | EAN: 4016032486794 | Fiber Optic Splice Closure, 48 cores, dome-shaped

ACCESSORIES

FIBER OPTIC PIGTAILS

DIGITUS® Colored Pigtails, LC/APC OS2 09/125 μ, Simplex

FO pigtail set, 12 pcs., LC (APC), SM OS2 09/125 μ
loose buffer, color code DIN IEC 304, 2 m

Future-oriented standards and high-end quality for
your network.



Technical details

- Simplex OS2 09/125 μ 2 m
- Standard connector acc. IEC 61754-4 2002
- Operating temperature: -25 °C ... +80 °C
- Insertion loss MM PC: max. 0.4 dB
- Return loss MM PC: > 25 dB
- Colored buffer, according to IEC 304 in the colors white, violet, turquoise, black, red, pink, orange, grey, green, yellow, brown, blue

DK-29332-02/APC | EAN: 4016032428848 | Colored Pigtails, LC/APC OS2 09/125 μ, Simplex

ACCESSORIES

FIBER OPTIC CABLE CONNECTOR

DIGITUS® SC/UPC Fiber Optic Fast connector (10 Pieces)

Fiber Optic Fast Connector, SM SC/UPC 10 piece pack

Fast connectors are designed to enable quick and easy termination of fibers in the field. For uncomplicated fast repair of existing installations as well as for new installations, e.g. for Fttx in-house cabling.



Technical details

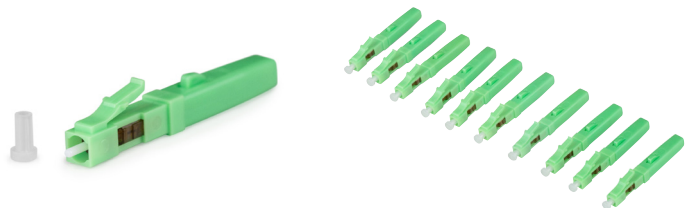
- | | | |
|-----------------------------------|--------------------------------|-------------------------------------|
| ▪ Connector Type : SC | ▪ Ferrule : Ceramic (2,5mm) | ▪ Cable Diameters : 0.9/2.0/3.0mm |
| ▪ Polishing : UPC | ▪ Insertion Loss ≤ 0.2 dB | ▪ Product colour : Black, Blue |
| ▪ Fiber Mode : 9/125µm Singlemode | ▪ Return Loss ≥ 50 dB | ▪ Storage Temperature : -40 to 85°C |

DN-FC-9100 | EAN: 4016032486800 | SC/UPC Fiber Optic Fast connector (10

DIGITUS® LC/APC Fiber Optic Fast connector (10 Pieces)

Fiber Optic Fast Connector, SM LC/APC 10 piece pack

Fast connectors are designed to enable quick and easy termination of fibers in the field. For uncomplicated fast repair of existing installations as well as for new installations, e.g. for Fttx in-house cabling.



Technical details

- | | | |
|-----------------------------------|--------------------------------|-------------------------------------|
| ▪ Connector Type : LC | ▪ Ferrule : Ceramic (1,25mm) | ▪ Cable Diameters : 0.9/2.0/3.0mm |
| ▪ Polishing : APC | ▪ Insertion Loss ≤ 0.2 dB | ▪ Product colour : Green |
| ▪ Fiber Mode : 9/125µm Singlemode | ▪ Return Loss ≥ 50 dB | ▪ Storage Temperature : -40 to 85°C |

DN-FC-9101-APC | EAN: 4016032xxxx | LC/APC Fiber Optic Fast connector (10 Pieces)

DISCOVER OUR SOLUTIONS FOR STRUCTURED CABLING


assmann.shop/en/Structured-Cabling/

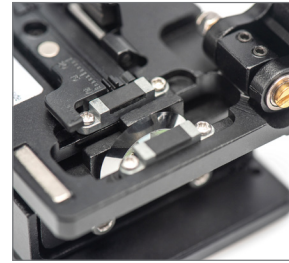

ACCESSORIES

TOOLS

DIGITUS® Optical Fiber Cleaver

Optical Fibre Cleaver

The cleaver allows to prepare glass fibres in one step for splice connection processes. Therefore, it enables a quick and easy assembling of the fiber cables.



Technical details

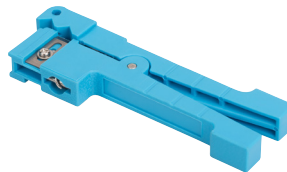
- Supported fiber diameter : 125um
- Supported fiber diameter incl. Coating : 250um, 900um
- Supported fiber type : silicon optical fiber
- The average cutting Angle (slitting angle): ≤ 0.7 degrees (single-core fiber)
- The maximum cutting Angle (sliding angle) : ≤ 1.2 degrees (single-core fiber)
- Cutting broken rate : $\leq 5\%$

DN-F0-FC | EAN: 4016032486817 | Optical Fiber Cleaver

DIGITUS® Cable Stripper for fibers of fiber optic installation cables

Cable stripper for indoor fiber cable 2-6 mm diameter, incl. replacement blade

This tool can be used to strip the insulation coating of indoor fiber cables with a diameter from 2-6 mm to leave the blank fiber. That makes it a perfect tool in usage together with a splice device.



Technical details

- Compact design
- inkl. Ersatzklinge
- For 2-6 mm outer diameter cable

DN-F0-FS4 | EAN: 4016032452355 | Cable Stripper for fibers of fiber optic Installation cables

DIGITUS® Connector Cleaning Tool Click for PC and APC

Connector cleaning tool with click cleaner for PC and APC For 1.25 & 2.5 mm ferrules. Optimal cleaning products for your fiber optic range.



Technical details

- Easy cleaning of ferrules
- Up to 800 cleaning cycles per cassette
- Antistatic properties
- Cleaning of connecting end faces in mated condition possible

DN-F0-PCT-1 | EAN: 401603252044 | Connector Cleaning Tool Click for PCT 1 for 1,25 mm ferrules

DN-F0-PCT-2 | EAN: 4016032352051 | Connector Cleaning Tool Click for PCT 2 for 2,5mm ferrules

DIGITUS® Kevlar clipper

Kevlar clipper for cutting the kevlar in a Fiber Optic Cable

This clipper is ideal to cut Kevlar in a Fiber Optic Cable. The design is ergonomic.



DN-F0-KC | EAN: 4016032435266 | Kevlar clipper

THE BASIS FOR A NETWORKED LIFE

Experience our IT server, network and peripheral infrastructure areas with the unique 2D Solution & Product Navigator.

PERIPHERAL INFRASTRUCTURE

NETWORK INFRASTRUCTURE

SERVER INFRASTRUCTURE

E-MOBILITY



assmann.com/de/loesungen/2d-produkt-navigator/



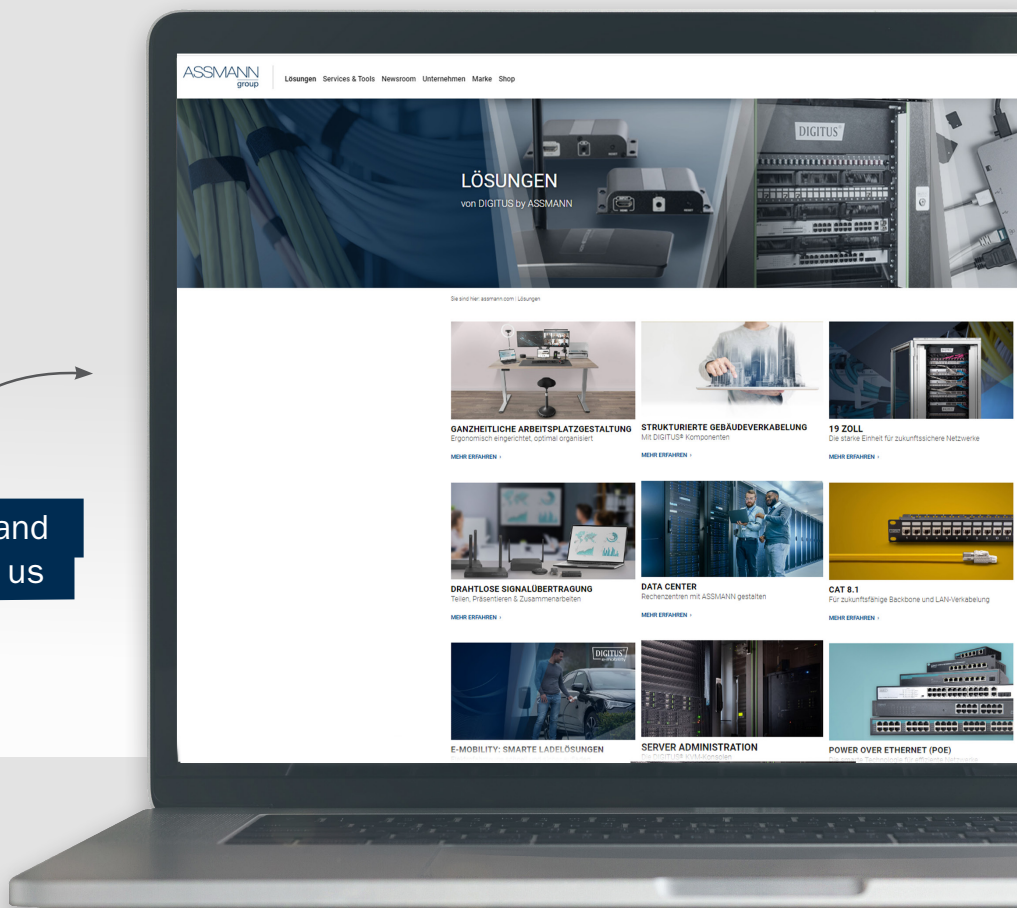
DIGITUS®

DISCOVER MORE ABOUT OUR COMPREHENSIVE SOLUTIONS

For more information and
solutions, please visit us
on our website



assmann.com/en/solutions/



DIGITUS®

ASSMANN
germany

www.assmann.com

DM-30436

Brand names and logos mentioned are trademarks or registered trademarks of their respective owners. Design deviations from the illustrations, errors and technical changes are reserved. All information without guarantee. We accept no liability for printing errors. Subject to availability, only while stocks last. 02/2024

ASSMANN Electronic GmbH

Auf dem Schüffel 3, 58513 Lüdenscheid

Tel.: +49 (0)2351 554 0

www.assmann.com