



# Making Networked AV Easy

Video over IP Series – VE8900 / VE8950 / VE8952



reddot award 2018  
winner



# Contents

Why Choose ATEN's Video over IP Solution?	1
User-centered Hardware Design	2
Benefits	3 • 8
Go Mobile with VE8900 / VE8950 Control App	9
Facilitating Setup with ATEN Network Switches	11
More Features	12
Specifications	13
Applications	15 • 16

# Why Choose ATEN's Video over IP Solution?

ATEN's Video over IP solution delivers visually lossless 1080p / 4K AV signals with low latency over long distance via a standard Gigabit network. It is designed to address the challenges that system integrators encounter when implementing AV over IP solutions and provides an effective, easy-to-use, and economical digital signage solution with the following features and advantages:



## Limitless Flexibility and Scalability

From a simple point-to-point setup, to hundreds of endpoints, it offers flexibility, scalability and multi-functionality in extender, splitter, matrix switch, and video wall applications.



## Go Further for Less with Daisy Chaining

Easily expand your AV network coverage without cable clutter or extra network switches while also lowering per-port costs.



## No Complicated IP Setup

Allows you to effortlessly switch input sources via top panel pushbuttons/ID display and offers simple configuration that requires no extensive IT experience.



## No Additional Server PCs or Software Required

Effortlessly manage your AV over IP system by logging in to any receiver or transmitter from the web GUI.



## Flexible Control with Mobile App

Instantly preview, monitor, and switch video sources via any mobile device to streamline your operations on the go.

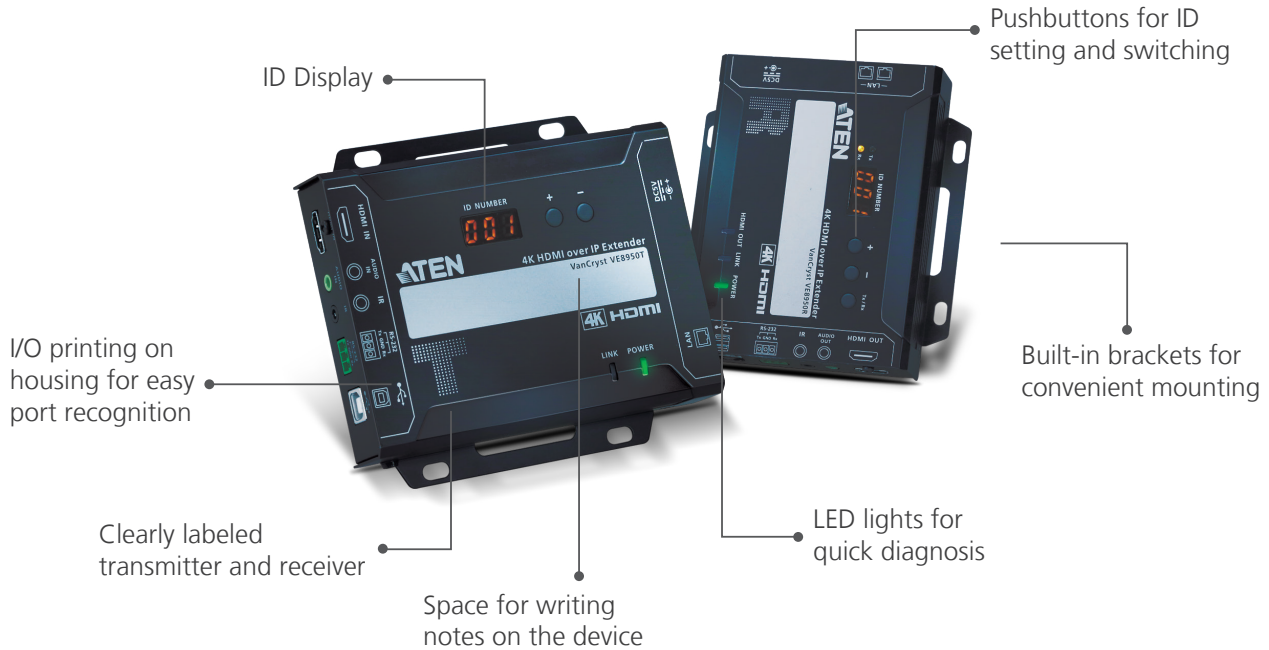


## Convenient Integration and Installation

Facilitate deployment with PoE models that require no additional power cabling and pre-configured ATEN Gigabit network switches.

# User-centered Hardware Design

The VE8900 / VE8950 / VE8952 has been designed with the user in mind. With large, clear ID displays and simple pushbuttons for ID setting and switching, the units also feature I/O printing on the housing for easy port recognition, built-in brackets for convenient mounting, and LED lights for quick diagnosis. There is even a dedicated space on the unit for writing your own labels.

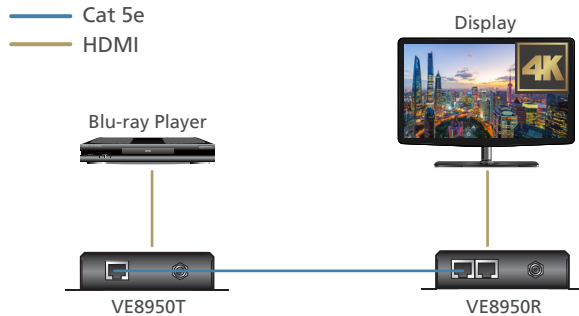


# Benefits

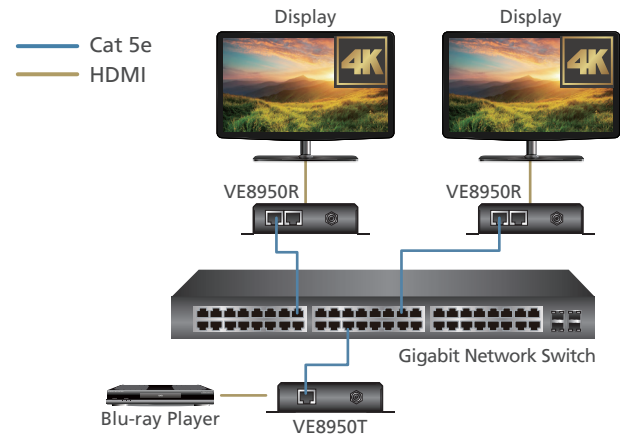
## Limitless Scalability and Flexibility

- Extends AV connections from a simple point-to-point to a multi-point to multi-point setup via LAN without distance limitations.
- Offers multi-functionality in extender, splitter, matrix switch, video wall and daisy chain applications.
- Mix and match the latest 4K displays and 1080p screens. The built-in scaler automatically scales incoming video signals to match the maximum resolution of the connected display devices.

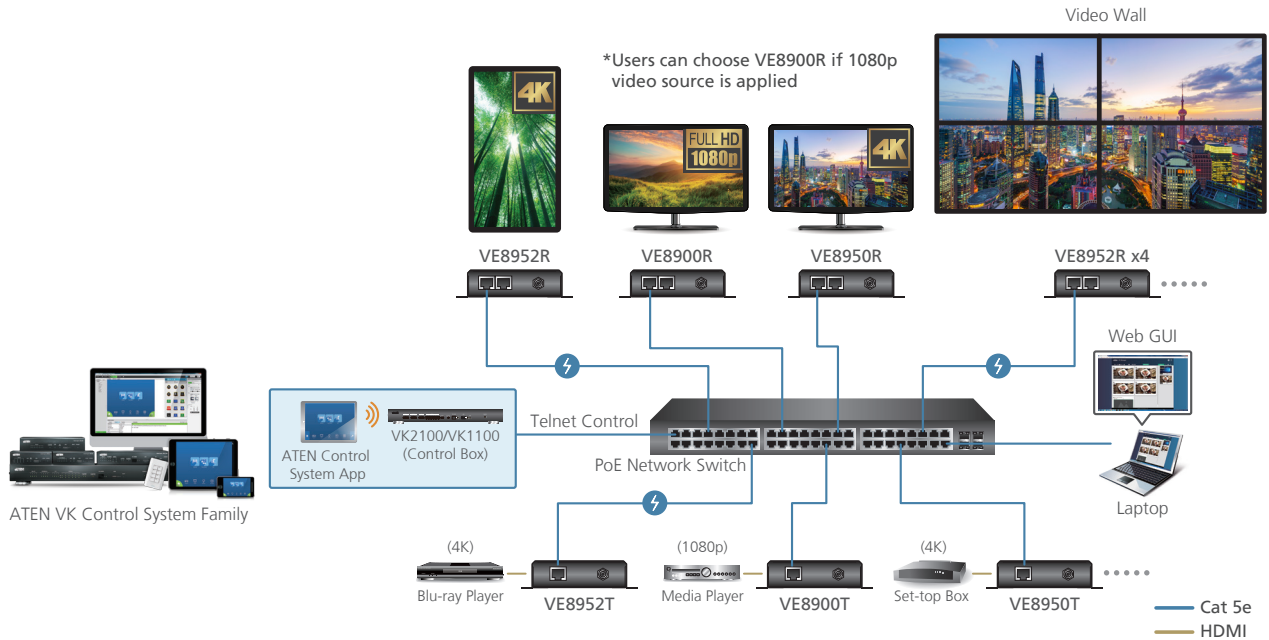
### Extender Setting



### Splitter Setting



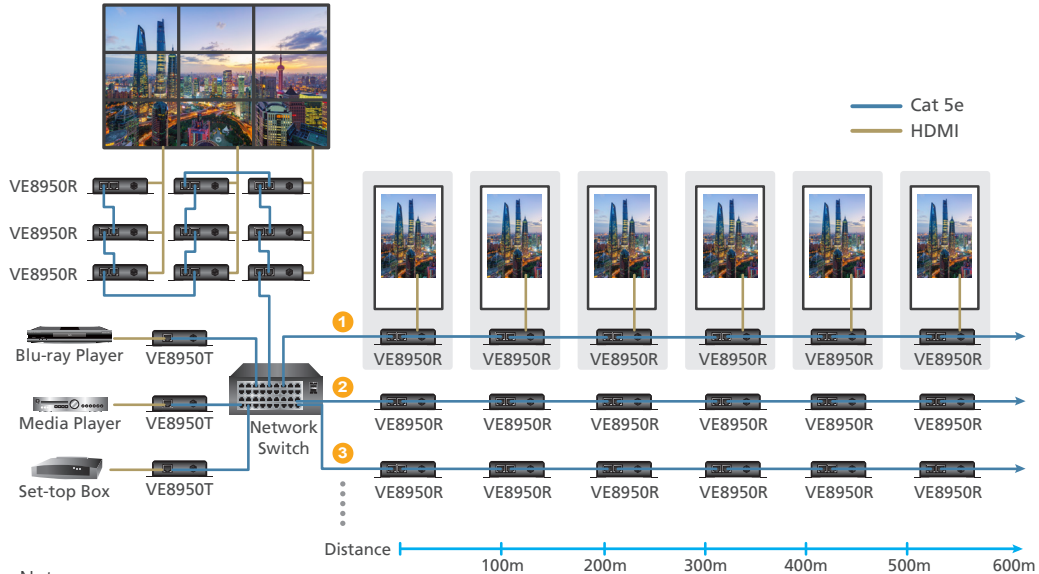
## Matrix Switch & Video Wall Complex Setting



Note: VE8952 supports PoE and can be installed in combination with PoE network switches to reduce power cabling and number of additional power outlets required.

# Go Further For Less with Daisy Chaining

- Connects multiple displays through a single port to utilize every port of the network switch and maximize their value.
- Easily expandable – cabling and system deployment is easy with no huge network switches and fewer cables needed.
- Perfect for large-scale deployment covering hundreds of meters, such as hotel facilities, airports, university campuses, stations, shopping malls, and exhibition centers.



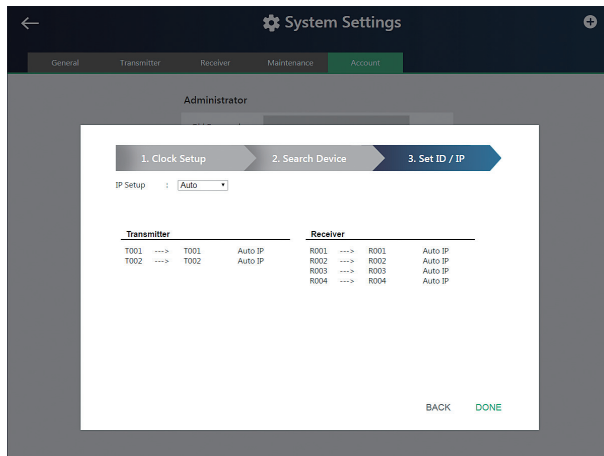
Note:

1. Depending on your network architecture, we recommend daisy chaining up to 30 units.
2. VE8952 does not support PoE in daisy chain architecture.

## No Complicated IP Setup

- VE Manager can help you to assign IP addresses to each device automatically by Auto IP function. Configuration is simple. No extensive IT experience nor extra learning is required.
- Effortlessly switch among input sources via top panel pushbuttons.

### Auto IP Function



### Top Panel Pushbuttons



## No Additional Server PCs or Software Required

- Supports web GUI (VE Manager) for device management.
- No additional server PCs, control boxes, or software/drivers are needed.



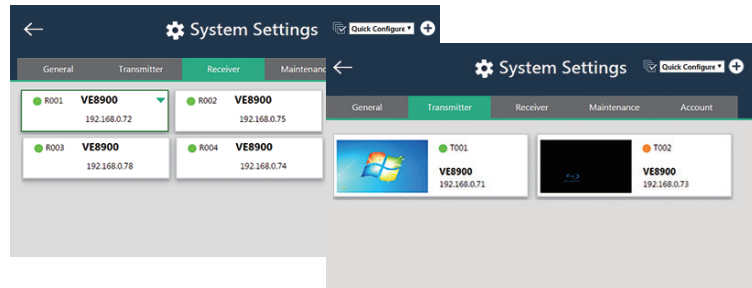
## Intuitive Web GUI – VE Manager

The ATEN Video over IP series can be configured via its built-in Graphical User Interface (GUI). The system can be accessed through the intranet, operators can easily log in via most web browsers.

### Real-time System Status Monitoring

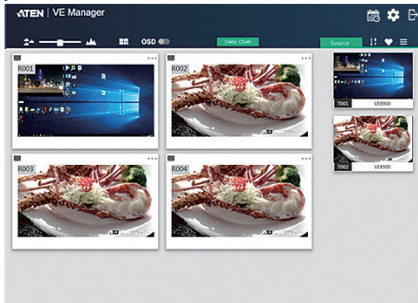
Easily configure and monitor the status of each transmitter and receiver by color indicators.

- Green: Connected and active
- Orange: Standby
- Grey: Offline



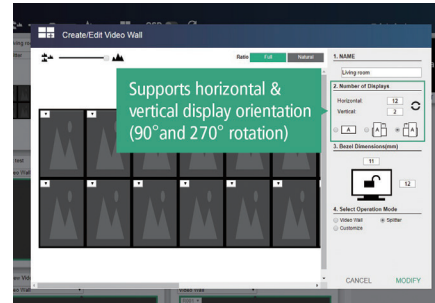
### Preview

Allows you to preview the video source in real-time before selecting and showing the content on each display.



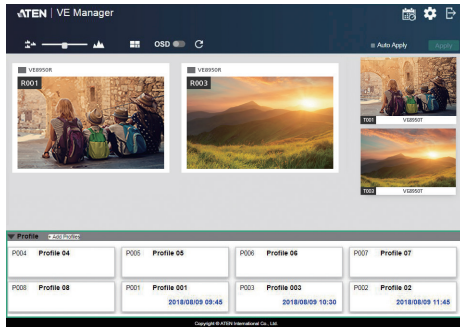
### Video Wall Setup

Provides maximized flexibility to manage various video wall layouts.



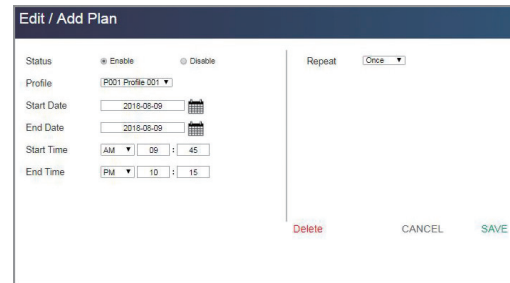
## Profile Management

Create video wall, splitter, and matrix profiles effortlessly and manage all your profiles at the same time.



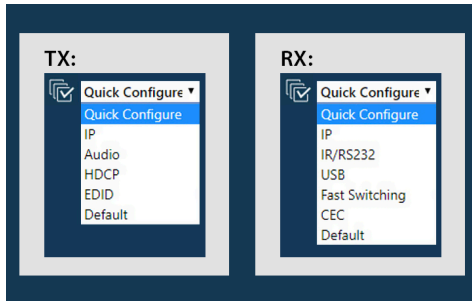
## Scheduling Management

Pre-plan display schedules by setting event times spanning across different dates, hours, and even minute intervals.



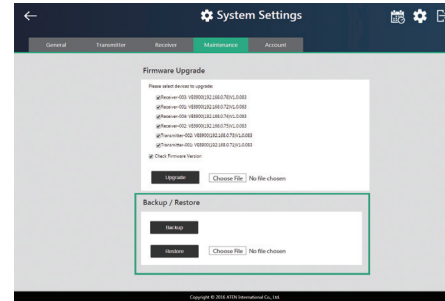
## Batch Configuration

Execute settings across multiple transmitters or receivers at once for quick and efficient configuration.



## Backup and Restore Settings

Duplicate VE Manager settings and easily apply the same settings to different locations.



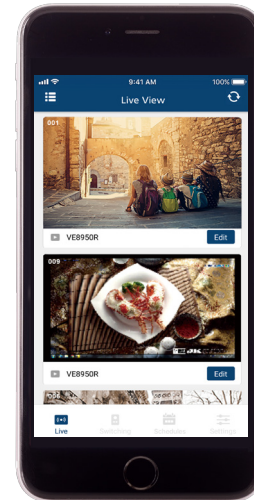
# Go Mobile with the VE8900 / VE8950 Control App

Easily manage and control any VE8900 / VE8950 / VE8952 and streamline operations with the VE8900 / VE8950 Control App. This mobile app provides direct access to the VE Manager, which enables preview, monitor, and control of video sources, and keeps you on track with the latest display schedule and system updates.



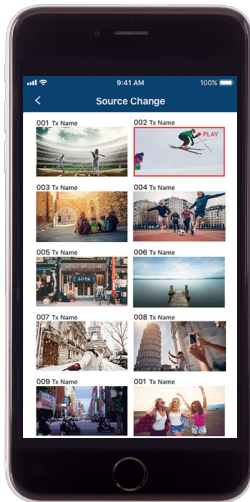
## Monitor

Check the status of receivers and all your digital signage content.



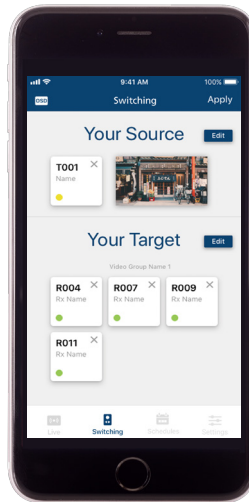
### Preview

Review video sources before switching.



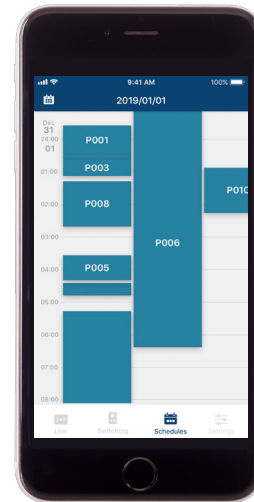
### Control

Switch a source to multiple receivers instantly.



### Calendar-based Scheduling

Check and revise the display schedule on the go.



# Facilitating Setup with ATEN Network Switches

Simply connect VE8900 / VE8950 / VE8952 transmitters and receivers to ES0152 / ES0152P network switches to deploy your AV network without the hassles of a complicated setup. With this pre-configured solution, there is no need to install additional software or configure devices.

- VE8900 / VE8950 / VE8952 device auto detection
- Supports IGMP Snooping, Fast Leave, Flow Control
- Supports IGMP v1/v2/v3 Snooping and IGMP v1/v2 Querier
- Supports 48 Gigabit Ethernet ports and 4 SFP uplink ports (10Gbps)
- High-performance Gigabit Ethernet L2 access switch with 176 Gbps switching capacity

VE8900 / VE8950 / VE8952  
HDMI over IP Extender



ES0152 / ES0152P\*  
52-Port GbE Managed Switch



Note:

1. Please refer to the VE89 Implementation Guide before selecting your network switch.
2. Netgear M4300 series and Zyxel XGS2210 series network switches are fully compatible for VE89 series solution integration.

## Implementation Guide Available

For a problem-free VE installation experience, be sure to get the Implementation Guide.



# More features

## Lightweight Compression with Ultra-low Latency

- Delivers visually lossless high-quality video up to 1080p @ 60 Hz (VE8900) / 4096 x 2160 @ 30 Hz 4:4:4 (VE8950 / VE8952).
- Ensures stunning quality video using ATEN advanced video compression technology.
- EDID Expert™ selects the optimum EDID settings for smooth power-up, high-quality display and the best video resolution across different screens.

## Power over Ethernet Support

- Locate VE8952 anywhere without having to install additional power cabling and outlets.

## Embedded / De-embedded Audio Support

- For Transmitters – separate audio signal can be embedded into the HDMI stream.
- For Receivers – audio stream can be extracted from the HDMI stream and delivered as a separate audio signal.

## Multiple Control Channels

- Multiple control methods – the system can be managed via Ethernet or top-panel pushbuttons.
- USB Connectivity – USB port (USB 2.0) allows for connection of devices such as keyboard, mouse, flash drive, printer, and other USB peripherals.
- Bi-directional IR Channel – full range (30K~56KHz) IR transmission is processed one way at a time.
- RS-232 Channel – bi-directional RS-232 serial port allows for connection of peripherals such as touch screens and bar code scanners.

# Specifications

Function	VE8900R	VE8950R	VE8952R	VE8900T	VE8950T	VE8952T
<b>Video Input</b>						
Interfaces	N/A			1 x HDMI Type A Female (Black)		
Impedance	N/A			100 Ω		
Max. Distance	N/A			3m (2L-7D03H)		
<b>Video Output</b>						
Interfaces	1 x HDMI Type A Female (Black)			N/A		
Impedance	100 Ω			N/A		
Max. Distance	3m (2L-7D03H)			N/A		
<b>Video</b>						
Max. Data Rate	Average: 150 ~ 500Mbps					
Compliance	HDMI HDCP Compatible	HDMI (4K) HDCP Compatible		HDMI HDCP Compatible	HDMI (4K) HDCP Compatible	
Max. Resolutions / Distance	Up to 1080p @ 100 m (Cat 5e / 6, point to point)	Up to 4K @ 100 m (Cat 5e / 6, point to point) *4K supported: 4096 x 2160 / 3840 x 2160 @ 30Hz (4:4:4)		Up to 1080p @ 100 m (Cat 5e / 6, point to point)	Up to 4K @ 100 m (Cat 5e / 6, point to point) *4K supported: 4096 x 2160 / 3840 x 2160 @ 60Hz (4:2:0) 4096 x 2160 / 3840 x 2160 @ 30Hz (4:4:4)	
<b>Audio</b>						
Input	N/A			1 x HDMI Type A Female (Black) 1 x Mini Stereo Jack Female (Green)		
Output	1 x HDMI Type A Female (Black) 1 x Mini Stereo Jack Female (Green)			N/A		

# Specifications

Function	VE8900R	VE8950R	VE8952R	VE8900T	VE8950T	VE8952T
<b>Connector</b>						
Unit to Unit	2 x RJ-45 Female			1 x RJ-45 Female		
<b>Control</b>						
IR	1 x Mini Stereo Jack Female (Black)					
RS-232	Connector: 1 x Terminal Block, 3 pole Baud Rate: 19200, Data Bits:8, Stop Bits: 1, no parity and flow control					
USB	2 x USB Type A Female (Black)			1 x USB Type B Female (White)		
<b>Power</b>						
Connectors	1 x DC Jack (Black) with locking 1 x RJ-45 (Power over Ethernet, POE) for VE8952R / VE8952T					
Consumption	DC5V:4.28W:41	DC5V:4.53W:43	DC5V:5.22W:46 DC48V:6.52W:52 (PoE)	DC5V:3.07W:14	DC5V:3.08W:14	DC5V:3.49W:16 DC48V:4.36W:20 (PoE)
<b>Environmental</b>						
Operating Temperature	0 - 40 °C					
Storage Temperature	-20 - 60 °C					
Humidity	0 - 80% RH, Non-Condensing					
<b>Physical Properties</b>						
Housing	Metal					
Weight	0.49 kg		0.68 kg	0.67 kg		0.50 kg
Dimensions (L x W x H) with bracket	14.02 x 12.30 x 3.06 cm		17.02 x 14.69 x 3.00 cm	14.02 x 12.30 x 3.06 cm		17.02 x 14.69 x 3.00 cm
Dimensions (L x W x H) without bracket	13.60 x 10.10 x 2.96 cm		16.60 x 12.49 x 2.90 cm	13.60 x 10.10 x 2.96 cm		16.60 x 12.49 x 2.90 cm



# Applications

ATEN's Video over IP solution is perfect for large-scale deployments covering hundreds of meters, such as university campuses, stations, shopping malls, and exhibition centers.

## Shopping Malls



## Convention Centers

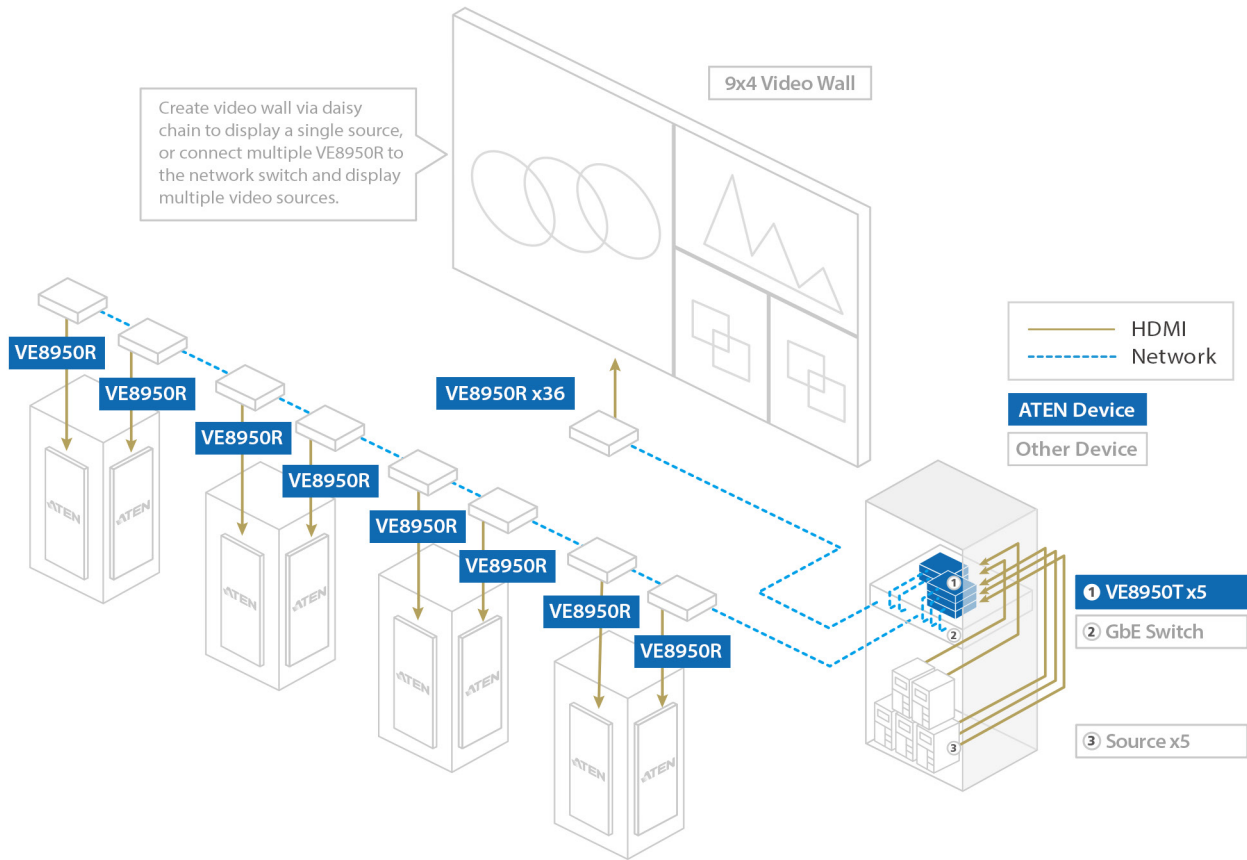


## Airports

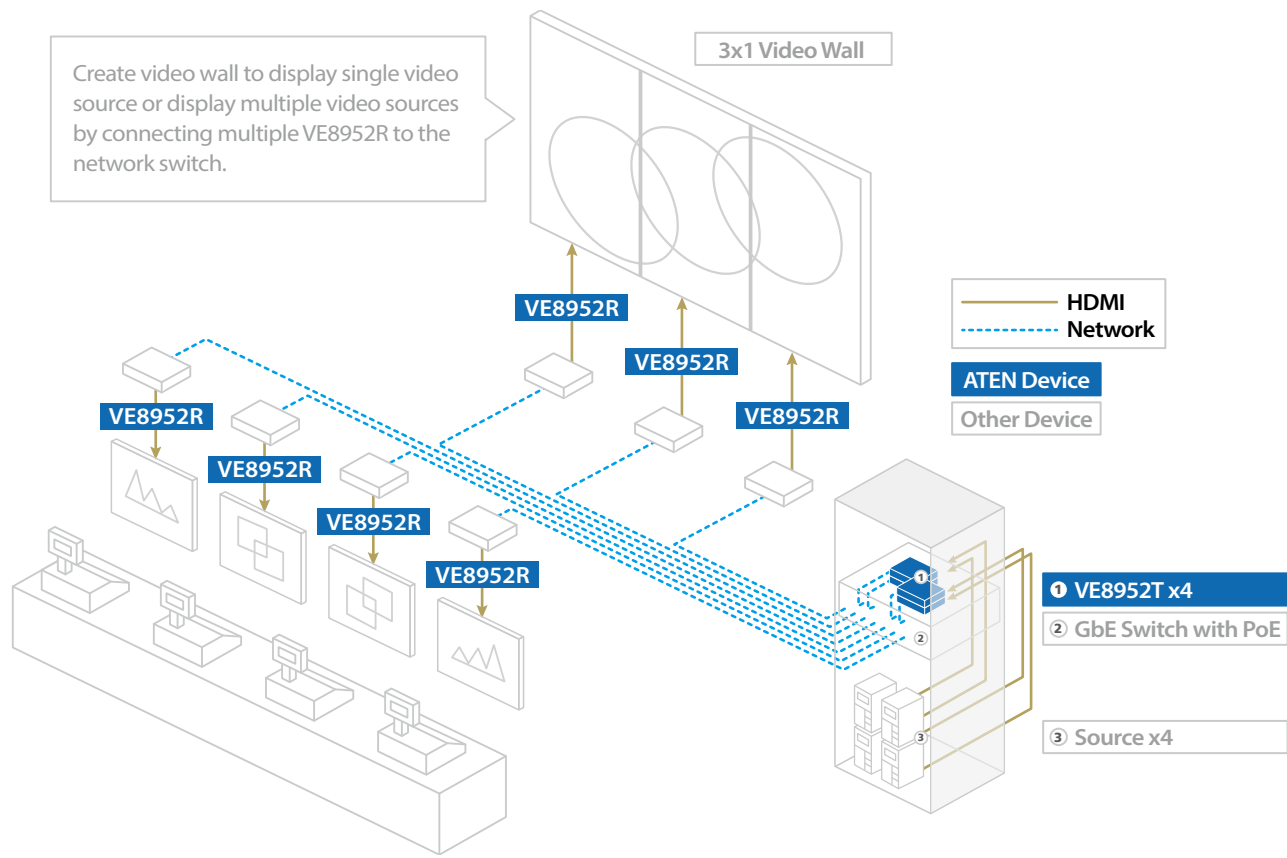


## Stores





Create video wall to display single video source or display multiple video sources by connecting multiple VE8952R to the network switch.





Simply Better Connections

## Corporate Headquarters

ATEN International Co., Ltd.  
3F, No.125, Sec. 2, Datung Rd., Sijhih District,  
New Taipei City 221, Taiwan  
Phone: +886-2-8692-6789 Fax: +886-2-8692-6767  
<http://www.aten.com/global/en/>  
E-mail: [marketing@aten.com](mailto:marketing@aten.com)

## North America Region:

ATEN Technology Inc.  
Irvine (CA) Headquarters  
15365 Barranca Parkway, Irvine, CA 92618, U.S.A.  
Phone: +1-949-428-1111 Fax: +1-949-428-1100  
<http://www.aten.com/us/en/>  
E-mail: [sales@aten-usa.com](mailto:sales@aten-usa.com)

New Jersey Branch  
220 Davidson Avenue, Suite 404, Somerset,  
NJ 08873, U.S.A.  
Phone: +1-732-356-1703 Fax: +1-732-356-1639  
<http://www.aten.com/us/en/>  
E-mail: [sales@aten-usa.com](mailto:sales@aten-usa.com)

## EMEA Region:

ATEN Infotech N.V.  
Mijnwerkerslaan 34, 3550 Heusden-Zolder, Belgium  
Phone: +32-11-531543 Fax: +32-11-531544  
<http://www.aten.com/eu/en/>  
E-mail: [sales@aten.be](mailto:sales@aten.be)

ATEN U.K. Limited  
466 Malton Avenue, Slough SL1 4QU, U. K.  
Phone: +44-1753-539-121 Fax: +44-1753-215-253  
<http://www.aten.com/gb/en/>  
E-mail: [sales@aten.co.uk](mailto:sales@aten.co.uk)

ATEN Poland Sp. z o. o.  
2 Gottlieb Daimler Street 02-460 Warsaw, Poland  
Phone: +48-514-120-220  
<http://www.aten.com/pl/pl/>  
E-mail: [poland@aten.com](mailto:poland@aten.com)

ATEN Romania S.R.L.  
10 Bucuresti-Nord Road, Global City Business Park,  
Building O 13, 6th floor, Voluntari, Ilfov County, Romania  
Phone: +40 314 257 746  
<http://www.aten.com>  
E-mail: [romania@aten.com](mailto:romania@aten.com)

ATEN Russia  
Office 14212, No.14 Sereblyakova Proezd,  
Moscow, Russia  
Phone: +7-495-134-2808  
<http://www.aten.com/ru/ru/>  
E-mail: [russia@aten.com](mailto:russia@aten.com)

ATEN Info İletişim Ltd.  
Beştepe Mah.Yaşam Cad.,  
Neorama Is Merkezi T3-A / 76  
Yenimahalle Ankara, Turkey  
Phone: +90-312-284-00-27  
E-mail: [turkey@aten.com](mailto:turkey@aten.com)

## Oceania Region:

ATEN ANZ Pty Ltd.  
Suite 3, 19, 32 Delhi Road, North Ryde,  
NSW 2113, Australia  
Phone: +61-2-9114-9933 Fax: +61-2-8072-3723  
<http://www.aten.com/au/en/>  
E-mail: [sales@au.aten.com](mailto:sales@au.aten.com)

## Asia Pacific Region:

ATEN China Co., Ltd.  
Beijing Headquarters  
18/F, Tower A, Horizon International Tower, No.6,  
Zhichun Road, Haidian District, Beijing, China 100088  
Phone: +86-10-5225-0110 Fax: +86-10-8296-1318  
<http://www.aten.com/cn/zh/>  
E-mail: [sales@aten.com.cn](mailto:sales@aten.com.cn)

Shanghai Branch  
18E, Shanghai Industrial Investment Building, No. 18  
Cao Xi Bei Road, Xuhui District,  
Shanghai 200030, China  
Phone: +86-21-3126-0110 Fax: +86-21-3126-0110-310  
<http://www.aten.com/cn/zh/>  
E-mail: [sales@aten.com.cn](mailto:sales@aten.com.cn)

Guangzhou Branch  
Room 3913, Ren-Feng Building, No. 490  
Tian He Road, Tian He District, Guangzhou 510620, China  
Phone: +86-20-3883-0110 Fax: +86-20-3835-0810  
<http://www.aten.com/cn/zh/>  
E-mail: [sales@aten.com.cn](mailto:sales@aten.com.cn)

ATEN Japan Co., Ltd.  
Tokyo Headquarters  
ATEN Bldg. 8-4, Minami-senju 3-chome,  
Arakawa-ku, Tokyo 116-0003, Japan  
Phone: +81-3-5615-5810 Fax: +81-3-3891-3810  
<http://www.aten.com/jp/ja/>  
E-mail: [sales@atenjapan.jp](mailto:sales@atenjapan.jp)

Osaka Branch  
Awajimachi Dai-Building 3F  
3-1-9, Awajimachi, Chuo-ku, Osaka-shi, 541-0047, Japan  
Phone: +81-6-6229-5810 Fax: +81-6-6229-8810  
<http://www.aten.com/jp/ja/>  
E-mail: [sales@atenjapan.jp](mailto:sales@atenjapan.jp)

Kyushu Office  
Hakata High Tech Bld.7F, 3-7-35, Hakataeki Mae,  
Fukuoka Shi Hakata Ku, Fukuoka Ken, 812-0011, Japan  
Phone: +81-92-710-6108 Fax: +81-92-710-6148  
<http://www.aten.com/jp/ja/>  
E-mail: [sales@atenjapan.jp](mailto:sales@atenjapan.jp)

Nagoya office  
Nishiki Maruemu Building 3F, 3-1-30, Nishiki, Naka Ku,  
Nagoya Shi, Aichi Ken, 460-0003, Japan  
Phone: +81-52-201-5810 Fax: +81-52-201-5811  
<http://www.aten.com/jp/ja/>  
E-mail: [sales@atenjapan.jp](mailto:sales@atenjapan.jp)

ATEN Korea Co., Ltd.  
Seoul Headquarters  
B-303, 32, Digital-ro 9-gil,  
Geumcheon-gu, Seoul 08512, Korea  
Phone: +82-2-467-6789 Fax: +82-2-467-9876  
<http://www.aten.com/kr/ko/>  
E-mail: [sales@aten.co.kr](mailto:sales@aten.co.kr)

Busan Branch  
1111, 99, Centum dong-ro, Haeundae-gu, Busan 48059, Korea  
Phone: +82-51-782-7156 Fax: +82-51-782-7157  
<http://www.aten.com/kr/ko/>  
E-mail: [roy@aten.co.kr](mailto:roy@aten.co.kr)

Atech Peripherals, Inc.  
New Taipei Headquarters  
6F, No.133, Sec. 2, Datung Rd., Sijhih District,  
New Taipei City 221, Taiwan  
Phone: +886-2-8692-6969 Fax: +886-2-8692-6926  
<http://www.aten.com/tw/zh/>  
E-mail: [taiwan@aten.com](mailto:taiwan@aten.com)

Kaohsiung Office  
Room D, 8F, No. 117, Zhongshan 1st Rd.  
Xinxing District, Kaohsiung 800, Taiwan  
Phone: +886-7-286-8188 Fax: +886-7-286-8199  
<http://www.aten.com/tw/zh/>  
E-mail: [taiwan@aten.com](mailto:taiwan@aten.com)

ATEN India Rep. Office  
Unit 406, 4th Floor, Barton Center, M.G. Road,  
Bangalore - 560001, India  
Phone 1: +91-80-48517231  
Phone 2: +91-9686151525  
<http://www.aten.com>  
E-mail: [South-Asia@aten.com](mailto:South-Asia@aten.com)



© Copyright 2020 ATEN® International Co., Ltd.

ATEN and the ATEN logo are trademarks of ATEN International Co., Ltd. All rights reserved. All other trademarks are the property of their respective owners.

Printed 09/2020 V4.0  
PAPE-0089-K90