



**DIGITUS®**

# Focus Products

Our top assortment



**ASSMANN Electronic GmbH**

with its headquarters in Lüdenscheid, North Rhine-Westphalia, was founded in 1969 and is now – as part of ASSMANN Holding GmbH – an internationally operating solution provider for high-quality server, network and peripheral infrastructure products. Ten additional subsidiaries are brought together under the holding company with locations in:

**Austria, Switzerland, France, Spain, Croatia, Poland, Turkey, China, Taiwan and Hong Kong.**

The varied product portfolio of the established in-house brand DIGITUS® is sold worldwide through IT distributors, system integrators, electronics wholesalers, the e-commerce channel and corporate resellers.

**DIGITUS® by ASSMANN**

Ready for the digital future. Whether the public sector, industrial companies, large corporations or single offices – with the product range from DIGITUS®, ASSMANN offers structured building cabling to its customers and enables the smart networking of modern working environments. These include products and solutions for:

- Data network technology
- Network and server cabinets
- Installation cables and accessories
- Active and passive network components
- Accessories for PC and workstation
- Ergonomic office equipment
- Connection and signal transmission solutions
- E-Mobility

**Digital expertise – ASSMANN**

easy to do business with Customers benefit not only from the comprehensive, certified and compatible range of products with which they can cover all their needs, but especially from the variety of innovative digital services, e-tools and trade marketing measures that ASSMANN offers in custom solutions for the optimization of their joint online business.

These include product finders for online shops that can be adapted for specific target groups and implemented on the customer website, clever direct shop integrations of the DIGITUS® brand world or practical product master data downloads such as ETIM.

**In a good position – focusing on an international orientation**

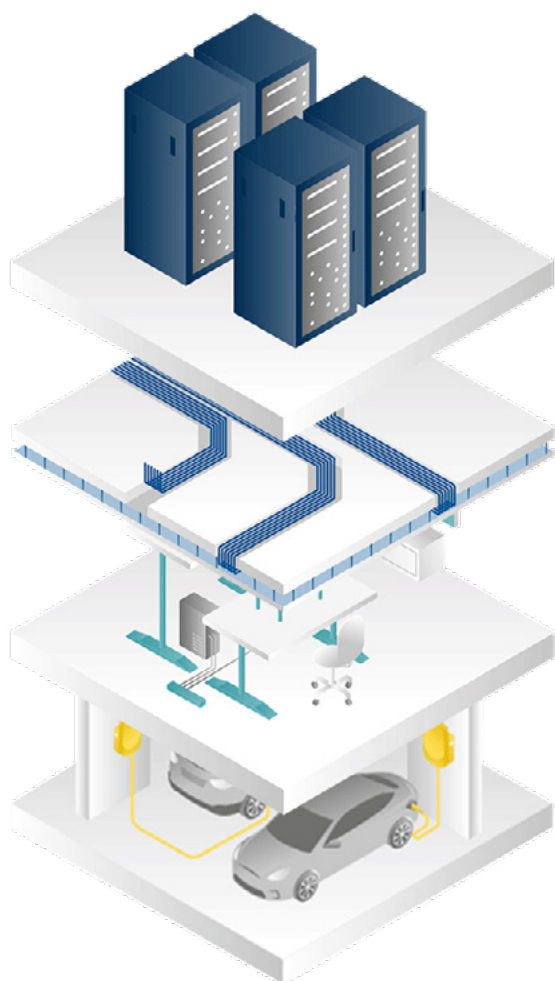
ASSMANN Holding is completed by its top management, consisting of Phil Penninger as Managing Director Operations (COO), Dirk Kunz as Managing Director Finance, Controlling and Human Resources (CFO) and Michael Zulauf as Managing Director Sales and Marketing (CSO).

With the multifaceted expert knowledge of their leadership, ASSMANN continues to advance its sustainable growth at the international level.





## TABLE OF CONTENTS



### SERVER INFRASTRUCTURE 4

Cabinets . . . . .	4
Accessories . . . . .	7
UPS-Systems . . . . .	10
PDU . . . . .	11

### NETWORK INFRASTRUCTURE 12

Copper Solutions . . . . .	12
Fiber Optic Solutions . . . . .	15
Media Converter . . . . .	17
SFP DAC AOC . . . . .	18
Network Switches . . . . .	20
PoE . . . . .	29

### PERIPHERAL INFRASTRUCTURE 33

Audio & Video Solutions . . . . .	33
Cable & Adapter . . . . .	40
Ergonomie . . . . .	44
Computer Periphery . . . . .	52

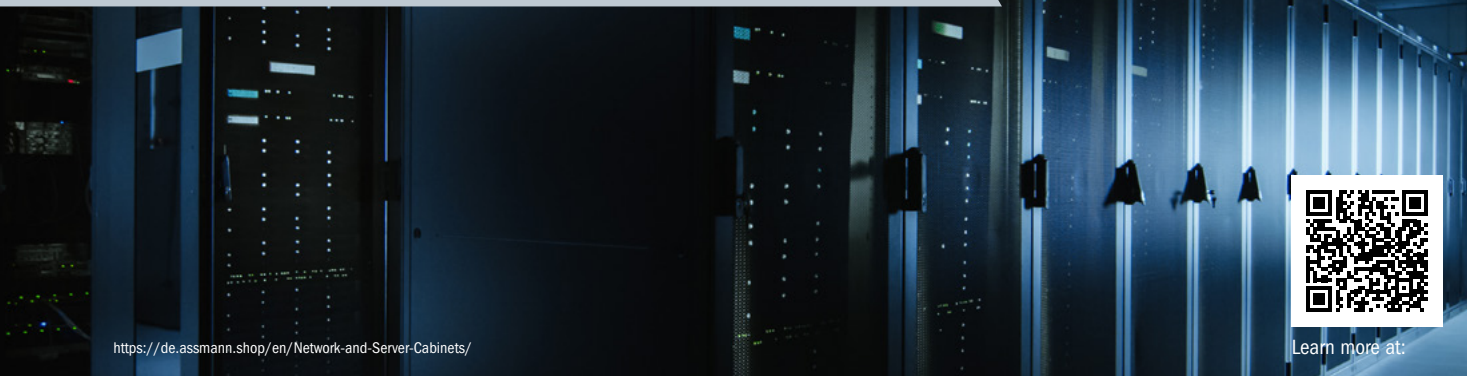
### BUILDING TECHNOLOGY 62

E-Mobility . . . . .	62
----------------------	----

## THE BASIS FOR A NETWORKED LIFE.

Experience our IT server, network and peripheral infrastructure divisions with the unique 2D Solutions & Product Navigator.

## DIGITUS® SERVER INFRASTRUCTURE



### DIGITUS® Wall Mounting Cabinet 254 mm (10") - 312x300 mm (WxD)

254 mm (10") 6U wall mounting cabinet  
330x312x300 mm, color grey (RAL 7035) or black (RAL 9005)

The DIGITUS® Wall Mounting Cabinets are made for high demand IT-Infrastructure Solutions - designed and developed on highest standard in Germany



#### Technical Features

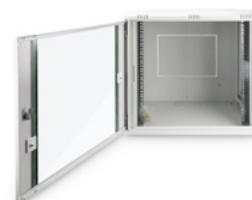
- The small 10" network wall housing stands out with its compact dimensions and full functionality for organized IT cabling - Ideal for home or small office environments
- A lockable glass door protects the office or home network against unauthorized access, yet still enables visual inspection of the internet router, NAS server or network switch
- Optimal integration into building cabling - Thanks to the cable entries in the floor and roof, power cables and network cables can be introduced into the mini-rack either from below or from above
- The profile rails can be moved into 2 different positions - The steel housing can be connected to the potential equalization of the building cabling via the grounding bolt
- For the 10-inch form factor (254 mm), various IT components are available such as patch panels, LAN & PoE switches, socket strips and cable management solutions and shelves from DIGITUS®

**DN-10-05U-1** EAN 4016032331421 | 254 mm (10") 6U wall mounting cabinet 330x312x300 mm, color grey (RAL 7035) or black (RAL 9005)

### DIGITUS® Wall Mounting Cabinets Dynamic Basic Series - 600x450 mm (WxD)

12U wall mounting cabinet, Dynamic Basic  
607x600x450 mm, color grey (RAL 7035) or black (RAL 9005)

Future-oriented standards and high-end quality for your network.



#### Technical Features

- The 19-inch networking housing has 12 rack units for the installation of network and server units as well as components for audio applications - The maximum installation depth is 36.5 cm
- For cable guidance, pre-cut openings are provided in the floor, roof and back wall that can be opened as required - The safety glass door has an opening angle of 210°
- With its removable side walls, the network distributor offers excellent accessibility for the maintenance and installation of integrated IT components such as patch fields, switches or socket strips
- If the passive ventilation of the wall housing is not sufficient for devices such as routers, NAS, UPS, telecommunications systems, a separately available fan module can be installed in the roof of the data cabinet
- The door hinge of the lockable front door can be switched from the left to the right as needed - Ideally suited for the digital infrastructure in your company, home network or home office

**DN-19 12-U-EC** EAN 4016032221715 | 12U wall mounting cabinet, Dynamic Basic 607x600x450 mm, color grey (RAL 7035) or black (RAL 9005)



## DIGITUS® Wall Mounting Cabinet Unique Series - 600x450 mm (WxD)

12U wall mounting cabinet, Unique 643x600x450 mm, color grey (RAL 7035) or black (RAL 9005)

The DIGITUS® Unique Series is made for high demand IT-Infrastructure Solutions - designed and developed on highest standard in Germany



### Technical Features

- The 19-inch networking housing has 12 rack units for the installation of rack devices such as patch fields, switches, socket strips or shelves - The maximum installation depth is 37 cm
- For cable guidance, lockable openings are provided in the floor, roof and back wall that can be used as required - The safety glass door has an opening angle of 210°
- The removable and lockable side walls ensure excellent accessibility of the network wall distributor and also protect the installed IT devices against unauthorized access
- Each network distributor cabinet is prepared for the installation of a roof fan unit that can be ordered separately - For device mounting, profile rails are installed in the front area of the cabinet
- For free-standing installations, optionally available pedestals or casters can be installed on the bottom of the housing - The door hinge can be switched from the left to the right

DN-19 12-U EAN 4016032135227 | 12U wall mounting cabinet, Unique 643x600x450 mm, color grey (RAL 7035) or black (RAL 9005)

## DIGITUS® varioFLEX series - 800x800 mm (WxD)

42U varioFLEX network cabinet 2031x800x800 mm, color grey (RAL 7035)

The varioFLEX cabinets are made for high demand IT-Infrastructure solutions - designed and developed on highest standard for maximum stability and flexibility.



### Technical Features

- Maximum stability and flexibility of up to 1200 kg
- High load capacity of 483 mm (19") profile rails
- Very modular design with changeable 483 mm (19") blank panels in roof and base

DN-19 42U-8/8-V EAN 4016032371397 | 42U varioFLEX network cabinet 2031x800x800 mm, color grey (RAL 7035)

## DIGITUS® Network Rack Unique Series - 800x800 mm (WxD)

42U network rack, Unique 2053x800x800 mm, color grey (RAL 7035) or black (RAL 9005)

The DIGITUS® Unique Series is made for high demand IT-Infrastructure Solutions - designed and developed on highest standard in Germany



### Technical Features

- Special roof construction for fan unit with added lid which can be unmounted
- Lock system with pivot lever on front door (ready for profile half cylinder; adapter included)
- Sliding cable entry with rubber sealing on the base

DN-19 42U-8/8-1 EAN 4016032334217 | 42U network rack, Unique 2053x800x800 mm, color grey (RAL 7035) or black (RAL 9005)

## DIGITUS® Server Rack Unique Series - 800x1000 mm (WxD)

42U server rack, Unique, 2050x800x1000 mm perforated steel doors, color grey (RAL 7035) or black (RAL 9005)

The DIGITUS® Unique Series is made for high demand IT-Infrastructure Solutions - designed and developed on highest standard in Germany



### Technical Features

- Special roof construction for fan unit, incl. perforated cover
- Lock system with pivot lever on front- and rear door (incl. profile half cylinder lock)
- Sliding cable entry with rubber sealing on the top and base

**DN-19 SRV-42U-8-B** EAN 4016032331766 | 42U server rack, Unique, 2050x800x1000 mm perforated steel doors, color color grey (RAL 7035) or black (RAL 9005)

## DIGITUS® Network Rack Dynamic Basic Series - 800x800 mm (WxD)

42U network rack, Dynamic Basic 2040x800x800 mm, color grey (RAL 7035) or black (RAL 9005)

The DIGITUS® Dynamic Basic Series is made for high demand IT-Infrastructure Solutions - designed and developed on highest standard in Germany



### Technical Features

- Roof is prepared for fan units
- Lockable pivot lever on front door
- Base with punched out cable entry, covered with screwed metal plate

**DN-19 42U-8/8-D** EAN 4016032336525 | 42U network rack, Dynamic Basic 2040x800x800 mm, color grey (RAL 7035) or black (RAL 9005)

## DIGITUS® Charging Trolley for Notebooks / Tablets up to 15.6 inch

Charging trolley, 30 charge bases, 15.6", black 1260 x 824 x 650 mm, incl. USB, PDU, fan

The ideal solution for storing and charging your portable devices.



### Technical Features

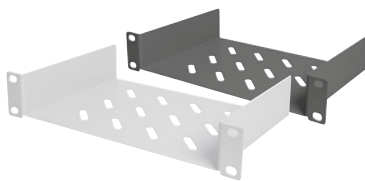
- 30 stations (3x10) for devices
- 30 x USB connection
- 3 x socket strip installed on the back (10 x safety sockets including switch)
- Cable feedthrough and excessive cable storage on each level
- Compact housing, mobile thanks to installed rollers
- 3 x ventilator (24 V) for active cooling of the cabinet
- Incl. RCD 30 mA (residual current operated device)

**DN-45002** EAN 4016032477617 | Charging trolley, 30 charge bases, 15.6", black 1260 x 824 x 650 mm, incl. USB, PDU, fan

## DIGITUS® 254 mm (10") 1U Shelf

254 mm (10") 1U fixed shelf 44x254x150 mm, color grey (RAL 7035) or black (RAL 9005)

Future-oriented standards and high-end quality for your network.



### Technical Features

- Perfect for storage of components which are not 254 mm (10") suitable
- Slim design which takes space of 1 height unit
- Easy and quick to mount or dismount

**DN-10 TRAY-1** EAN 4016032139836 | 254 mm (10") 1U fixed shelf 44x254x150 mm, color grey (RAL 7035) or black (RAL 9005)

## DIGITUS® Shelf for Fixed Installation in 483 mm (19") Cabinets

1U fixed shelf for racks from 400 mm depth 45x483x250 mm, up to 15 kg, color grey (RAL 7035) or black (RAL 9005)

Future-oriented standards and high-end quality for your network.



### Technical Features

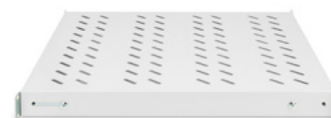
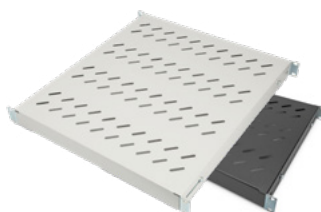
- Perfect for storage of components which are not 483 mm (19") suitable
- Slim design which takes space of 1 height unit
- Easy and quick to mount or dismount

**DN-97609** EAN 4016032275084 | 1U fixed shelf for racks from 400 mm depth 45x483x250 mm, up to 15 kg, color grey (RAL 7035) or black (RAL 9005)

## DIGITUS® Shelf with Variable Rails for Fixed Mounting in 483 mm (19") Cabinets

1U fixed shelf for 800 mm depth racks 44x482x500 mm, adjust. 500-700 mm depth, color grey (RAL 7035) or black (RAL 9005)

Future-oriented standards and high-end quality for your network.



### Technical Features

- For fixed mounting on the four 483 mm (19") profile rails
- 4-point fixing (front- and rear 19" profile rails)
- Units: 1
- sturdy, perforated steel sheet
- Color: light grey, RAL 7035
- Weight: 3.2 kg
- incl. fixing material
- Load capacity: 50 kg
- Inch form factor (IEC 60297): 482.6 mm (19")
- Mounting type: Adjustable mounting rails
- Suitable cabinet depth: 800 mm

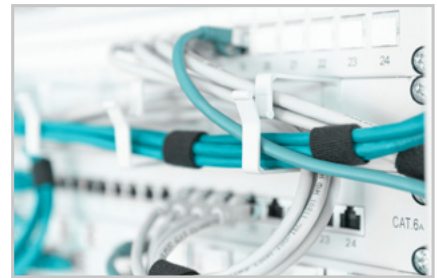
**DN-97646** EAN 4016032364986 | 1U fixed shelf for 800 mm depth racks 44x482x500 mm, adjust. 500-700 mm depth, color grey (RAL 7035) or black (RAL 9005)



## DIGITUS® Cable Management Panel with Cable Rings for 483 mm (19") Cabinets, 1U

1U cable management panel 5x cable rings 40x60 mm, color grey (RAL 7035) or black (RAL 9005)

Future-oriented standards and high-end quality for your network.



### Technical Features

- for installation on the 483 mm (19") profile rails
- sturdy steel sheet
- 5x cable management ring (HxD: 40x60 mm)
- incl. fixing material
- Color: light grey, RAL 7035
- Units: 1
- Inch form factor (IEC 60297): 482.6 mm (19")

**DN-97601** EAN 4016032266440 | 1U cable management panel 5x cable rings 40x60 mm, color grey (RAL 7035) or black (RAL 9005)

## DIGITUS® Cable Brush Management Panel for 483 mm (19") Cabinets

1U cable brush management panel open brush, color grey (RAL 7035) or black (RAL 9005)

Future-oriented standards and high-end quality for your network.



### Technical Features

- sturdy steel sheet
- Opening with brush strip (HxW: 27x423 mm)
- Incl. fixing material
- Color: black, RAL 9005
- Units: 1
- Inch form factor (IEC 60297): 482.6 mm (19")

**DN-97661** EAN 4016032430605 | 1U cable brush management panel open brush, color grey (RAL 7035) or black (RAL 9005)

## DIGITUS® Roof Ventilation Unit for 483 mm (19") Wall Mounting Cabinets

Roof vent. unit, wall mounting cabinets 2 fans, thermostat, switch, color grey (RAL 7035) or black (RAL 9005)

The DIGITUS® 483 mm (19") equipment is made for high demand IT-infrastructure solutions, produced on German standards.



### Technical Features

- Housing made out of sturdy steel sheet
- Fans with grid covers
- Noise level: 47 dBm
- 2 fans
- incl. thermostat, adjustable from 0 °C up to +70 °C
- On/off switch
- Air flow: 4.6 m³/min.
- 1.8 m cable with CEE 7/7 (Type-F) plug
- Color: light grey, RAL 7035
- Air flow: 4.6 m³/min
- Filter: no
- For cabinet series: Wall Mounting
- Inch form factor (IEC 60297): 482.6 mm (19")
- Mounting area: Roof
- Quantity of mounted fans: 2

**DN-19 FAN-2-WM-T** EAN 4016032158752 | Roof vent. unit, wall mounting cabinets 2 fans, thermostat, switch, color grey (RAL 7035) or black (RAL 9005)

## DIGITUS® Roof Cooling Unit for Unique Network Cabinets & Dynamic Basic Network- and Server Cabinets

Roof vent. unit, Unique network and Dynamic Basic 2 fans, thermostat, switch, color grey (RAL 7035) or black (RAL 9005)

The DIGITUS® 483 mm (19") equipment is made for high demand IT-infrastructure solutions, produced on German standards.



### Technical Features

- For installation into top-floor module
- 2 fans
- Noise level: 47 dBm
- incl. thermostat, adjustable from 0 °C up to +70 °C
- On/off switch
- Air flow: 4.6 m³/min. (276 m³/h)
- 1.8 m cable with safety plug CEE 7/7 (Type-F)
- IP21 protection class guaranteed when installed under the roof in Unique Series network cabinets
- Color: light grey, RAL 7035
- Air flow: 4.6 m³/min
- Filter: no
- For cabinet series: Unique Network, Dynamic Basic
- Inch form factor (IEC 60297): 482.6 mm (19")
- Mounting area: Roof
- Quantity of mounted fans: 2

**DN-19 FAN-2-N** EAN 4016032331230 | Roof vent. unit, Unique network and Dynamic Basic 2 fans, thermostat, switch, color grey (RAL 7035) or black (RAL 9005)

**SCAN ME**

<https://www.assmann.com/en/services-tools/product-matrix/>

DIGITUS® Product matrix tables

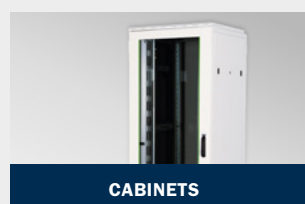
## PRODUCT COMPARISON MADE EASY!

We have now summarized our extensive range of the a.m. product categories for you in comparison overviews, which provide you with a quick overview of the features and details.

By the way: You can of course also find the comparison table on the respective product page. To do so, go to the web

store on the product detail page and download the pdf in the download area.

**Our matrix overviews are currently available as pdf downloads in the following categories:**



## ON-LINE SYSTEMS

### DIGITUS® OnLine UPS system, 3000 VA / 3000 W

#### OnLine UPS Module

The OnLine UPS is an ideal backup solution for your demanding power requirements and ensures fail-safe operation in a variety of industrial applications.



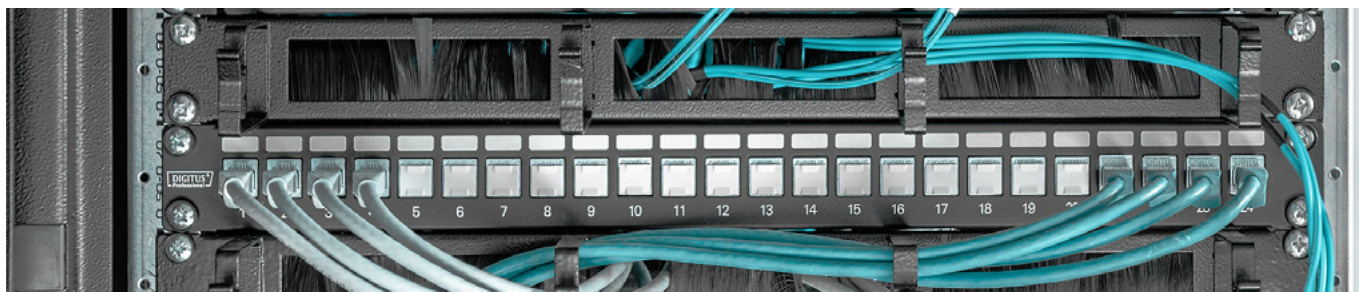
#### Technical Features

- High power factor (1.0), higher active power allows more connected loads, this saves space and reduces cost.
- High efficiency in online mode, higher efficiency means optimized power management and lower heat dissipation, resulting in energy savings and improved reliability.
- User-friendly LCD screen provides insight into UPS status for easy installation, configuration and operation.
- Compact rack/tower design optimizes rack space and allows for flexible installation.
- Minimized equipment downtime with hot-swappable, user-replaceable battery modules that can be replaced on the fly.
- External battery modules enable extended runtime.
- High number of outlets (8 x C13 & 1 x C19) for optimal power distribution to loads.
- Various communication interfaces (RS232/USB, parallel port, SNMP slot) allow remote monitoring of the system.
- Automatic battery self-test and fan speed control increase component life.
- Remote Emergency Power Off (REPO) function turns off the UPS during emergencies. When an emergency occurs, the REPO switch turns off the rectifier and inverter and immediately stops power to the load. The UPS stops charging and discharging the battery.
- 1-Phase
- 1-10 kVA

**DN-170094** EAN 4016032474654 | OnLine UPS Module, 1500VA/ 1500W

**DN-170106** EAN 4016032473541 | OnLine UPS Module, 6000VA/6000W 2U

**DN-170107** EAN 4016032473558 | OnLine UPS Module, 10000VA/10000W 2U



## LINE-INTERACTIVE SYSTEMS

### DIGITUS® Line-Interactive UPS, 2000 VA/1200 W

Line-Interactive UPS, 2000VA/1200W 12V/9Ah x2 battery, 4x CEE 7/7, USB, RS232, RJ45, LCD

High performance protection for your business and office computer systems against data loss and damage



#### Technical Features

- Boost and buck AVR for voltage stabilization
- Fast bridging times in case of power blackout
- Compact enclosure for space saving installation in your IT infrastructure
- Quick charging time
- Produce a low noise level under 40 dB
- 1-Phase
- 0,6 kVA - 2 kVA
- Simulated Sinewave

**DN-170076** EAN 4016032441380 | Line-Interactive UPS, 2000VA/1200W 12V/9Ah x2 battery, 4x CEE 7/7, USB, RS232, RJ45, LCD

**DN-170074** EAN 4016032441366 | Line-Interactive UPS, 1000VA/600W 12V/7Ah x2 battery, 4x CEE 7/7, USB, RS232, RJ45, LCD

**DN-170075** EAN 4016032441373 | Line-Interactive UPS, 1500VA/900W 12V/9Ah x2 battery, 4x CEE 7/7, USB, RS232, RJ45, LCD



## DIGITUS® All-in-One UPS, 800 VA / 480 W, LED

All-in-One UPS, 800VA/480W, LED 12V/9Ah x1, 4x CEE 7/7, 3x IEC C13, USB, RJ45

All-in-one: Reliable protection from data loss and power failure, surge damages to your connected devices



### Technical Features

- Microprocessor control unit guarantees high reliability
- Line interactive with AVR boost and buck automatic voltage regulation
- Saves space: Also suitable for wall mounting
- Integrated charger for mobile devices (USB)
- Auto restart: Automatically switches off when the battery has discharged, automatically switches on when the network connection is supplied with power again
- Auto charging: Automatic charging function when turned off
- Automatic voltage regulation
- Auto-restart / Cold start Function
- SW for Monitoring

**DN-170111** EAN 4016032456582 | All-in-One UPS, 800VA/480W, LED 12V/9Ah x1, 4x CEE 7/7, 3x IEC C13, USB, RJ45

## BASIC PDU

### DIGITUS® aluminum outlet strip with switch, 7 safety outlets, 2 m supply with surge protection

1U Aluminum PDU, rackmountable, 7x safety outlet 16A Plug, 250VAC 50/60Hz, switch, surge Protection

Safe and professional power in the 482.6 mm (19") range



### Technical Features

- 1-Phase
- 16 A
- 3 - 18 Outlets
- Safety / IEC C13 - C19 Outlets
- Horizontal / Vertical Installation
- Overvoltage / Line Filter

**DN-95407** EAN 4016032339335 | 1U Aluminum PDU, rackmountable, 7x safety outlet 16A Plug, 250VAC 50/60Hz, switch, surge Protection

**DN-95401** EAN 4016032266396 | 1U Aluminum PDU, rackmountable, 8x safety outlet 16A, 4000W, 250VAC 50/60Hz

**DN-95410** EAN 4016032352778 | 1U Aluminum PDU, rackmountable, 8x CEE 7/7 outlet 10A Plug, 250VAC 50/60Hz, IEC C14 plug, pre-fuse

**DN-95402** EAN 4016032266402 | 1U Aluminum PDU, rackmountable, 7x safety outlet 16A, 4000W, 250VAC 50/60Hz, switch

**DN-95403** EAN 4016032266419 | 1U Aluminum PDU, rackmountable, 7x safety outlet 16A, 4000W, 250VAC 50/60Hz, overload protection



## SMART PDU

### DIGITUS® Smart PDU, Input monitored, 1-phase, 32 A, 36 x C13, 6 x C19

Inlet monitored PDU, vertical, 32A, 36xC13, 6xC19  
2x16A circuit breaker, 3m cable, IEC309 32A plug

Optimal PDU solution with remote monitoring options  
for demanding IT requirements



#### Technical Features

- 1 / 3 Phase
- 16 A / 32 A
- 24 - 42 Outlets
- IEC C13 - C19 Outlets
- Monitored version
- Managed version

**DN-95625** EAN 4016032473282 | Inlet monitored PDU, vertical, 32A, 36xC13, 6xC19 2x16A circuit breaker, 3m cable, IEC309 32A plug

**DN-95640** EAN 4016032481614 | Inlet monitored PDU, vertical, 16A, 20xC13, 4xC19 3m cable, IEC60309 16A plug

**DN-95642** EAN 4016032481638 | Inlet monitored PDU, 3Ph, 32A, 30xC13, 12xC19 6x16A Circuit breaker, 3m cable, IEC309 3x32A plug

## DIGITUS® NETWORK INFRASTRUCTURE

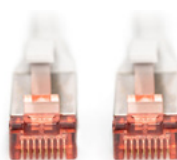


<https://de.assmann.shop/en/>

Learn more at:

## COPPER PATCH CORDS

### Patch Cords (Assembled) Shielded / Unshielded



#### Technical Features

- CAT 5e / CAT 6 / CAT 6A / CAT 8.1
- U-UTP / U-FTP / F-UTP / SF-UTP / S-FTP
- Shielded / Unshielded
- Pure copper, CCA
- LSOH / PVC / PUR
- Round / Slim / Flat patch cables - RJ45
- 0,25 m - 50 m
- Single pack & Multi pack
- Multiple colors

**DK-1644-XXX** | CAT 6 S-FTP Patch cable, Cu, LSZH AWG 27/7

**DK-1644-A-XXX** | CAT 6A S-FTP patch cable, Cu, LSZH AWG 26/7

**DK-1617-XXX** | CAT 6 U-UTP, Cu, LSZH AWG26/7

**DK-1617-A-XXXS** | CAT 6A U-UTP slim patch cord, Cu, LSZH AWG 28/7

**DK-1511-XXX** | CAT 5e U-UTP;Cu, PVC AWG 26/7

## COPPER INSTALLATION CABLES

### Installation cables Shielded / Unshielded



#### Technical Features

- CAT 5e / CAT 6 / CAT 6A / CAT 7 / CAT 7 A / CAT 8.1
- U-UTP / U-FTP / F-UTP / S-FTP / SF-UTP
- Eca, Dca, Cca, B2ca
- Shielded / Unshielded
- LSOH / PVC / PE
- 25 m - 1000 m
- Indoor / Outdoor
- simplex / duplex

**DK-1743-VH-XXX** | CAT 7 S-FTP Installation cable, 1200 MHz Dca (EN 50575), AWG 23/1

**DK-1743-A-VH-XXX** | CAT 7A S-FTP installation cable, 1500 MHz Dca (EN 50575), AWG 22/1

**DK-1623-A-VH-XXX** | CAT 6A U-FTP installation cable, 500 MHz Eca (EN 50575), AWG 23/1

**DK-1614-VH-XXX** | CAT 6 U-UTP installation cable, 250MHz Dca (EN 50575), AWG 23/1

**DK-1531-V-XXX** | CAT 5e SF-UTP installation cable, 100 MHz Eca (PVC), AWG 24/1

**DK-1511-V-XXX** | CAT 5e U-UTP installation cable, 100 MHz Eca (PVC), AWG 24/1

## Long-term warranty on DIGITUS® cabling components

We certify the system and not - as is common in the market - the installer. As a supplier of all passive building cabling components, we control and monitor the performance and reliability of our products and have their performance certified by independent testing institutes.

### Guaranteed worry-free for the next 25 years

The cabling infrastructure represents a long-term and strategic investment for any company. With the ASSMANN system warranty for DIGITUS® cabling systems, we ensure that the installation will provide a secure basis for the data infrastructure for a long period of time. Therefore, the 25-year warranty contract addresses the owner and operator of the installation.



#### More info:



<https://www.assmann.com/en/services/system-warranty/>



## COPPER PATCH PANELS

### CAT6A / Modular Patch Panel, shielded



#### Technical Features

- CAT 5e / CAT 6 / CAT 6A
- Shielded / Unshielded
- 0.5U / 1U / 2U
- 12 port / 24 port / 48 Port
- Empty patch panels / IDC Connection technology
- Black / Grey

**DN-91624S-EA** EAN 4016032288428 | CAT 6A Patch Panel, shielded, 1U, 24-port, 8P8C, grey RAL 7035, 483 mm (19")

**DN-91624S-SL-SH** EAN 4016032323297 | CAT 6 Patch Panel, shielded, 24-port RJ45 with shutter, 8P8C, LSA, 0.5U, 19" rack mount, Black RAL 9005

**DN-91624S** EAN 4016032241614 | CAT 6 patch panel, shielded, 24-port RJ45, 8P8C, LSA, 1U, rack mount, grey RAL 7035, 482x44x109 mm

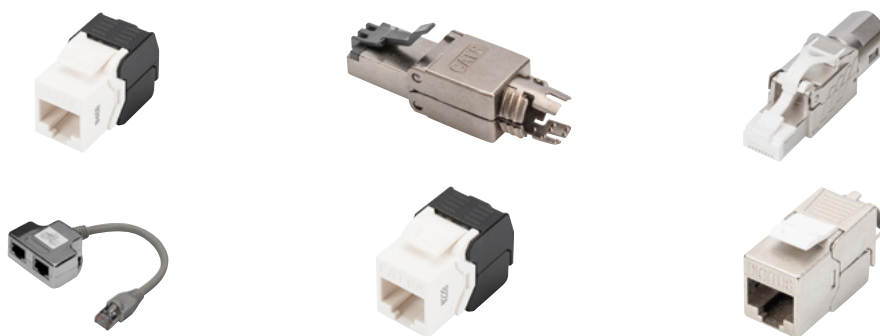
**DN-91624U** EAN 4016032241553 | CAT 6 Patch Panel, unshielded, 24-port RJ45, 8P8C, LSA, 1U, 482x44x109 mm, Black RAL 9005

**DN-91410** EAN 4016032280781 | Modular Patch Panel, shielded 24-port, blank, 1U, rack mount, grey RAL 7035

**DN-91411** EAN 4016032280798 | Modular Patch Panel, shielded 24-port, blank, 1U, rack mount, black RAL 9005

## COPPER MODULAR COMPONENTS

### CAT6A / Modular Patch Panel, shielded



#### Technical Features

- CAT 5e / CAT 6 / CAT 6A / CAT 8.1
- Shielded / Unshielded
- Class D / Class E / Class EA
- Keystone Jacks / Termination Plugs
- RJ 45 -Tool free connection
- Single pack / 24 pcs Pack

**DN-93615** EAN 4016032293767 | CAT 6A Keystone Jack, shielded, tool free connection

**DN-93615-24** EAN 4016032373087 | CAT 6A Keystone Jack, shielded, tool free connection , set 24 pcs.

**DN-93606** EAN 4016032366317 | CAT 6A Keystone Jack, unshielded tool free connection

**DN-93904** EAN 4016032267164 | CAT 5e patch cable adapter, 2x CAT 5e, shielded PC-PC, 2x RJ45 female to 1x RJ45 male, 0.19 m

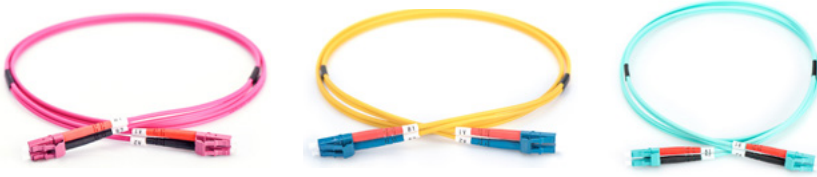
**DN-93835** EAN 4016032459743 | Cat.8.1 Field Termination Plug, shielded tool free

**DN-93837** EAN 4016032485711 | Cat.8.1 Field Termination Plug, shielded, Tool free, Black

**DN-93502** EAN 4016032276005 | CAT 5e Keystone Jack, unshielded RJ45 to LSA, tool free connection

## FIBER OPTIC - PATCHCABLES

### Fiber Optic Singlemode Patch Cord, LC/LC



#### Technical Features

- OS2 / OM3 / OM4
- Duplex type
- LC-LC / SC-SC connectors
- LSOH sheath
- 3 mm cable diameter

**DK-2933-xx** | FO patch cord, duplex, LC to LC SM OS2 09/125  $\mu$

**DK-2533-xx/3** | FO patch cord, duplex, LC to LC MM OM3 50/125  $\mu$

**DK-2533-xx-4** | FO patch cord, duplex, LC to LC MM OM4 50/125  $\mu$

## FIBER OPTIC TERMINATION BOXES

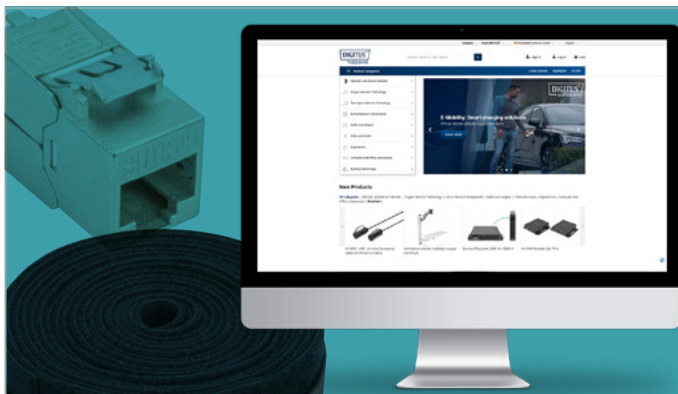
### Outdoor FTTH (Distribution) Box / DIN Rail Splicing Box



#### Technical Features

- For SC/SX or LC/DX couplers
- 2-24 coupler holders
- Suitable for 4-48 fibers
- IP65 protection

**DN-9689xx** | Outdoor FTTH (Distribution) Box / DIN Rail Splicing Box



Products from  
**DIGITUS® by ASSMANN**



[de.assmann.shop/en/](https://de.assmann.shop/en/)

## 19" FIBER OPTIC PATCH PANEL

**DIGITUS® Fiber Optic Splice Box, extendible, quick lock**



### Technical Features

- 1U
- Quick lock system
- Holder for splice cassettes
- Housing of 1.0 mm steel sheet
- Chassis with pigtail fixing punch outs

**DN-96200-QL** EAN 4016032458210 | FO splice box, 1U, quick lock, empty without front panel, incl. M20/M25 screws, grey

## FIBER OPTIC - INSTALLATION CORD

**DIGITUS® Installation Cord Indoor/Outdoor A/I-DQ (ZN) BH 9/125μ OS2, CPR Dca, LSZH**



### Technical Features

- OS2 / OM3 / OM4
- 4-24 Fibers
- LSOH sheath
- Colour: Black

**DK-39xxx-U** | FO A-I-DQ(ZN)BH 4E9/125μ, SM, OS2, Indoor/Outdoor, LSZH, Dca, black, length 1 m

**DK-35xxx/3-U** | FO A-I-DQ(ZN)BH 4G50/125μ, MM, OM3, Indoor/Outdoor, LSZH, Dca, black, length 1 m

**DK-35xxx/4-U** | FO A-I-DQ(ZN)BH 4G50/125μ, MM, OM4, Indoor/Outdoor, LSZH, Dca, black, length 1 m

## FIBER OPTIC - COUPLERS

**Fiber Optic coupler, duplex, ceramic sleeve, polymer housing, incl. screws**



### Technical Features

- OS2 / OM2 / OM3 / OM4
- SC / LC variants
- Duplex type
- Ceramic sleeve

**DN-960xx-1** | FO coupler, duplex, ceramic sleeve, polymer housing, incl. screws



## SEE HOW IT WORKS!

We show and explain our products and their functionality to you! Simply scan the QR code or visit our YouTube channel!





## FIBER OPTIC - PIGTAILS

### DIGITUS® colored pigtails, LC OS2 09/125 µ, Simplex



#### Technical Features

- OS2 / OM2 / OM3 / OM4
- SC / LC variants
- 12 piece set
- LSOH sheath
- 2m

**DK-29332-02** EAN 4016032280170 | FO pigtail set, 12 pcs., LC, SM OS2 09/125 µ loose buffer, color code DIN IEC 304, 2 m

**DK-25221-02x** | FO pigtail set, 12 pcs., SC, color code DIN IEC 304, 2 m

**DK-25332-02x** | FO pigtail set, 12 pcs., SC, color code DIN IEC 304, 2 m

## DIGITUS® Bidirectional Fast Ethernet Med<sup>+</sup>- Converter, RJ45 / SC

**Fast Ethernet Media Converter, Singlemode, BiDi  
Tx1310nm / Rx1550nm, SC connector, up to 40km**

**The perfect converter solution for various fiber media**



#### Technical Features

- Distance up to 40km
- Sends data in high quality and additionally
- provides excellent reliability
- Wavelength: Tx 1310nm / Rx 1550nm

**DN-82022** EAN 4016032293149 | Fast Ethernet Media Converter, Singlemode, BiDi Tx1310nm / Rx1550nm, SC connector, up to 40km

## DIGITUS® 10 Gigabit Media Converter

**10 Gigabit Ethernet Media Converter, SFP supports  
1G, 2.5G, 5G and 10G, open slot**

**The perfect converter solution for optical data  
transmission**



#### Technical Features

- 10G Base-T to 10G Base-R Media Converters
- Supports 1000 Base-T to 1000 Base-X, 2.5G Base-T to 2.5G Base-X, 5G Base-T to 5G Base-R
- and 10G Base-T to 10G Base-R
- 1 x RJ45/1 x SFP
- 100 Mbit - 10 Gbit

**DN-82211** EAN 4016032479482 | 10 Gigabit Ethernet Media Converter, SFP supports 1G, 2.5G, 5G and 10G, open slot

## DIGITUS® Gigabit Industrial PoE Switch 2 x RJ45, 1x SFP

**Industrial Media Converter 10/100/1000Base-TX (PoE) to 1000Base-FX**

**Industrial PoE Ethernet switch with 2-Port 10/100/1000Mbps RJ45(PoE) +1 Port 1000Mbps**



### Technical Features

- Bandwidth: 14Gbps
- Packet Buffer Memory: 1.2Mbit
- Packet Forwarding Rate: 10.5Mpps
- MAC Address Table: 2K
- Power supply: input voltage: DC48-57V
- Support dual power redundancy
- Industrial

**DN-652120** EAN 4016032482925 | Industrial Media Converter 10/100/1000Base-TX (PoE) to 1000Base-FX

## DIGITUS 10/100/1000Base-TX (PoE) to 1000Base-FX Industrial Media Converter

**Industrial Gigabit Ethernet PoE+ Media Converter SFP Open Slot, without SFP Module, PSE, 802.3at**

**Digitus DN-652104-1 10/100/1000 Base-TX(PoE) to 1000 Base-FX Industrial Media Converter, extends communication distance with stable performance via fiber optic wire. It feeds up 30W PoE max.**



### Technical Features

- The use of high quality photoelectric integration module to provide good optical and electrical characteristics
- Ensure reliable data transmission and long working life
- Support full duplex or half duplex mode, with automatic negotiation capability
- Network port support automatic cross identification
- In line with industrial operating standards, the average trouble-free work in more than 300,000 hours
- Working power supply: DC 48-57V to provide reverse protection

**DN-652104-1** EAN 4016032488217 | Industrial Gigabit Ethernet PoE+ Media Converter SFP Open Slot, without SFP Module, PSE, 802.3at

## DIGITUS® mini GBIC (SFP) Module, 1.25 Gbps, 80km

**1.25 Gbps SFP Module, Singlemode LC Duplex Connector, 1550nm, up to 80km**

**The plug and play fiber connection**



### Technical Features

- The Plug & Play fiber optic link enables quick installation
- Sends data in high quality and additionally provides excellent reliability
- Distance up to 80km at a maximum data rate of 1.25Gbps
- Operating temperature: 0 °C ~ 70 °C

**DN-81002** EAN 4016032305675 | 1.25 Gbps SFP Module, Singlemode LC Duplex Connector, 1550nm, up to 80km

## DIGITUS® 100Gbs QSFP28 SR4 Optical Transceiver

### 100Gbs QSFP28 SR4 Module



#### Technical Features

- Four-channel full-duplex transceiver modules
- Transmission data rate up to 26Gbit/s per channel
- Up to 70m on OM3 Multimode Fiber (MMF) and 100m on OM4 MMF
- Low power consumption <3.5W
- Operating case temperature 0°C to +70°C
- 3.3V power supply voltage
- RoHS 6 compliant
- Hot Pluggable QSFP form factor
- MPO connector receptacle
- Built-in digital diagnostic function

DN-81631 EAN 4016032483427 | 100Gbs QSFP28 SR4 Module

## DIGITUS® QSFP+ 40G 1 m DAC cable

QSFP+ 40G 1m DAC cable Allnet, CISCO, D-Link, Edimax, Etherwan, Fortinet

High bandwidth without delays or signal loss



#### Technical Features

- QSFP+ 40G 1 m DAC cable
- 2.125-41.2 Gbps supported data rate
- Compatible brands: Allnet, CISCO, Dell, D-Link, Edimax, Etherwan, Fortinet, Intellinet, KTI Networks, Level One, Netgear, PLANET, Tenda, TP-Link, ZyXEL etc. compatible
- DAC

DN-81307 EAN 4016032464273 | QSFP+ 40G 1m DAC cable Allnet, CISCO, D-Link, Edimax, Etherwan, Fortinet

## DIGITUS® QSFP+ 40G 30 m AOC cable

QSFP+ 40G 30m AOC cable Allnet, CISCO, Dell, D-Link, Edimax, Etherwan, Fortinet

High bandwidth without delays or signal loss



#### Technical Features

- QSFP+ 40G 30 m AOC cable
- 2.125-41.2 Gbps supported data rate
- Compatible brands: Allnet, CISCO, Dell, D-Link, Edimax, Etherwan, Fortinet, Intellinet, KTI Networks, Level One, Netgear, PLANET, Tenda, TP-Link, TRENDnet, ZyXEL, ZTE etc. compatible
- AOC

DN-81314 EAN 4016032460169 | QSFP+ 40G 30m AOC cable Allnet, CISCO, Dell, D-Link, Edimax, Etherwan, Fortinet



SCAN THE QR CODE,  
TO GET MORE BACKGROUND INFORMATION  
ON THE CONSTRUCTION PRODUCTS REGULATION!



## DIGITUS® KVM Switch, 2 Port, Dual Display, 4K, HDMI®

### Desktop HDMI KVM Switch

Operate 2 PCs with dual display using a USB keyboard and mouse combination – switch between two computers by pressing a button



#### Technical Features

- Use two monitors, a mouse / keyboard to operate two computers with dual display
- Supports a maximum UHD resolution of 4K / 30 Hz + FreeSync
- USB ports for mouse and keyboard
- Audio connections for microphone/speaker, supports Dolby True HD and DTS HD Master Audio
- Integrated USB hub with USB A port for additional peripheral equipment

**DS-12860** EAN 4016032467168 | Desktop HDMI KVM Switch

## DIGITUS® KVM Switch, 2 Port, 4K30Hz, USB-C™/USB/HDMI in, HDMI out, Network

### 2port Type C KVM with Network Port

New generation KVM switch support USB-C™ notebook computer It provides USB console, HDMI display, Hub, network and power to USB-C™ notebook computer via 1 USB-C™ cable.



#### Technical Features

- Inputs: 1 x HDMI computer, 1x USB-C™ computer, 1 x Gigabit network (RJ45), 2 x USB A (keyboard, mouse), 1x USB-C™ power ( optional)
- Output: 1 x HDMI video
- Additional connections on the front: 2 x USB A 2.0, 1 x audio input, 1 x audio output , 1 x USB-C™ ( for USB-C™ computer only)
- Provide LAN connection to USB-C™ notebook computer via USB-C™ cable
- Audio in/out: 3.5 mm audio jacks
- LED status indicator on front: 2 x, shows active computer
- Switch: Switching PC1 / PC2
- Switching time: 0.2s
- HDMI® version: 1.4
- HDCP version: 1.4/2.2
- UHD resolution: 3840 x 2160p / 30 Hz
- Subsampling: YCbCr 4:4:4/ YCbCr 4:2:2/ YCbCr 4:2:0
- Bandwidth HDMI: 10.2 Gbps all channels (3.4 Gbps per channel)
- Color depth HDMI®: 24/36 bit (all channels).
- Power supply via USB-C™port on the rear panel ( Optional )
- USB-C™ Power delivery : 20 V / 5 A / 100 W max.
- Operating temperature: 0°C ~ 50°C
- Storage temperature: -20°C ~ 60°C
- Operating humidity: 0% - 80% RH (non-condensing)
- housing material: metal
- dimensions: 150 x 88 x 26 mm (WxDxH)
- Weight: 400 g
- Color: Black

**DS-12901** EAN 4016032479987 | 2Port Typ C KVM mit Netzwerkanschluss

DISCOVER

OUR ASSORTMENT OF SWITCHES



Learn more at:

<https://de.assmann.shop/en/Active-Network-Components/Network-Switches/>



## DIGITUS® KVM-Switch, 4-Port, Dual-Display, 4K, HDMI®

### 4 Port HDMI Dual View 4k@30Hz

Operate 4 PCs with dual display using a USB keyboard and mouse combination – switch between two computers by pressing a button



#### Technical Features

- UHD resolution: 4K / 30 Hz (3840 x 2160p) / Subsampling: YUV 4:4:4
- Inputs: 8 x HDMI® inputs (4x2), 4 x USB B, 4 x Audio combo socket 3.5 mm jack (microphone, speaker)
- Outputs (console): 2 x HDMI®, 2 x USB A (mouse, keyboard), 2 x Stereo audio 3.5 mm jack (microphone, speaker)
- Additional connection on the front side: 1 x USB A for additional peripheral equipment such as printers or USB sticks
- HDMI® version: 1.4b
- USB specifications: USB 2.0 compliant (full speed)
- Supported audio formats: Dolby True HD, DTS HD Master Audio
- Switching between the PCs: Switch on the front side or hot keys
- Status LED on front side shows current configuration
- The device is platform-independent, suitable for all operating systems
- Operating temperature: 0 °C to 50 °C
- Storage temperature: -20 °C to +60 °C
- Operating humidity: 0% - 80% RH (non-condensing)
- Case material: Metal
- Power supply device: USB power supply or optional 9 V DC power adapter (300 mA, 5.5x2.1 mm plug)
- Dimensions: 20.2 x 11.0 x 6.6 cm (WxDxH)
- Weight: 920 g

**DS-12883** EAN 4016032478157 | 4 Port HDMI Dual View 4k@30Hz

## DESKTOP KVM

### DIGITUS® Modular console with 19" TFT (48,3cm), 8-port Cat.5 KVM & Touchpad, german keyboard

Modularized 48,3cm (19") TFT console with 8 port CAT 5 KVM, DE keyboard, black (RAL 9005)

Highest degree of flexibility during the administration of the server farm



#### Technical Features

- Modular console with 19" TFT (48,3cm), 8-port Cat.5 KVM & Touchpad, german keyboard
- Flexible configuration depending on area of application
- Space-saving casing with 1U design height
- 17 - 19" Display
- 9 Languages
- 1-16 Port
- VGA

**DS-72211-4GE** EAN 4016032449379 | Modularized 48,3cm (19") TFT console with 8 port CAT 5 KVM, DE keyboard, black (RAL 9005)

**DS-72211-2US** EAN 4016032449867 | Desktop HDMI KVM Switch

**DS-72211-3GE** EAN 4016032449362 | Modularized 48,3cm (19") TFT console with 16 port KVM, German keyboard, black (RAL 9005)

**DS-72210-3GE** EAN 4016032449317 | Modularized 43,2cm (17") TFT console with 16 port KVM, German keyboard, black (RAL 9005)

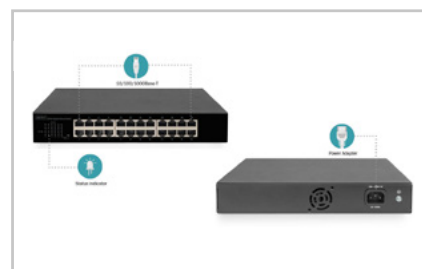
**DS-72211-5GE** EAN 4016032451433 | Modularized 48,3cm (19") TFT console with 16 port CAT 5 KVM, DE keyboard, black (RAL 9005)

## NETWORK SWITCHES 19"

### DIGITUS® 24 Port Gigabit Network Switch

**DIGITUS® 24-Port Gigabit Switch 24-port 10/100/1000Base-T**

**24 Port Gigabit Network Switch, 2 uplink ports, flow control, 8K MAC address table, VLAN**



#### Technical Features

- Supports IEEE802.3, IEEE802.3u, IEEE802.3x, IEEE802.3az
- Flow control for full duplex operation and back pressure for half duplex operation
- Supports VLAN mode
- LED lights for monitoring the operating status and for fault analysis
- Line speed forwarding, smart identification
- 48 Gbps switching capacity
- MAC address table: 8K
- Supports jumbo frame up to 9216K bytes
- Line speed forwarding, smart identification
- 48 Gbps switching capacity
- 1- 24 Ports

**DN-80113-1** EAN 4016032458067 | 24-Port Gigabit Switch 24-port 10/100/1000Base-T

### DIGITUS® 16 Port Fast Ethernet PoE Switch, 19 Inch, Unmanaged, 2 Uplinks

**Fast Ethernet PoE Switch 16-port PoE + 2 Combo, 250W PoE budget**

**Integrated Power over Ethernet (PoE) for small and medium network environments**



#### Technical Features

- 16-port 10/100Base-TX with PoE support
- 2-port Combo Gigabit TP/SFP Uplink
- Meets the network standards IEEE 802.3, IEEE802.3u, IEEE802.3ab, IEEE802.3z, IEEE802.3x, IEEE802.3af, IEEE802.3at
- PoE current output 55V DC, max. 30 W per port
- PoE power supply mode A, PIN 1/2(+), 3/6(-)
- Supports non-blocking, non-head-of-line forwarding
- Store and forward technology for optimized data transfer
- Automatic speed and half/full duplex recognition/adjustment
- Auto MDI/MDI-X function
- 8K MAC addresses
- Number of ports: 16
- Ethernet speed: Fast Ethernet
- Industrial usage: no
- Managed: no
- Outdoorsuitable: no
- PoE (Power over Ethernet): no
- Protection against vandalism: no
- VLAN: no
- Fast Ethernet / Gigabit

**DN-95342-1** EAN 4016032485667 | Fast Ethernet PoE Switch 16-port PoE + 2 Combo, 250W PoE budget

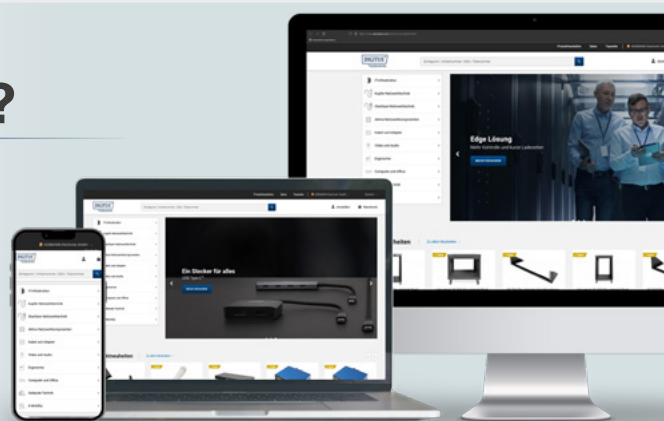
## ARE YOU LOOKING FOR SOMETHING SPECIFIC?

Discover our extensive range in the webshop

Scan me!



[de.assmann.shop/en/](https://de.assmann.shop/en/)



## DIGITUS 24 Port L2 Managed Gigabit Ethernet PoE Switch

**24 Port L2 Managed Gigabit Ethernet Switch with PoE Injector, 2 SFP Uplink**

The DN-95359 is a case-shaped device with a chassis of 1U high. It provides 24 10/100/1000Base-TX ports + 2 gigabit SFP ports. It provides 24 Port PoE Injector.



### Technical Features

- Provides 24 10/100/1000 Base-TX ports + 2 gigabit SFP ports, Provides 24 PoE injector
- Build-in power supplies, 330W, High back-plane bandwidth 52Gbps
- Support ICMPv6, IPv6 Neighbor Discovery, MLD Snooping, IPv6 Telnet, standard IP / Extend IP / MAC IP / ARP ACL, IGMP snooping for Multi-media application
- Support Port mirror and bandwidth control, IEEE802.3x Flow control
- Support Port Based VLAN / 802.1Q Tag VLAN, IEEE802.3ad Port trunk with LACP
- Support Spanning tree protocol IEEE802.1d/802.1w/802.1s
- Support IEEE 802.1p class of service, IEEE 802.1x user authentication
- Support Broadcast storm filter, System event log, command line interface management
- Management by Web / SNMP / SSH / Telnet (IPv6 ready) / Console

**DN-95359** EAN 4016032486503 | 24 Port L2 Managed Gigabit Ethernet Switch with PoE Injector, 2 SFP Uplink

## DIGITUS® 24-Port Gigabit Switch, 19 Inch, Managed, 2 Uplinks

**L2 managed Gigabit Ethernet Switch 24-port + 2 combo and 2 SFP uplink port**

Highest bandwidth and performance for professional demands. Superior manageability via WebUI!



### Technical Features

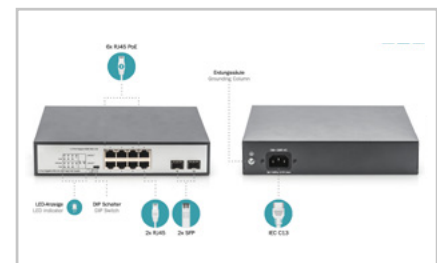
- 24 x 10/100/1000BaseTX ports
- 2 x Uplink RJ45/SFP combo ports
- 2 x SFP uplink ports
- 1 x RJ45 console port integrated
- Layer-2 features configurable via WebUI
- Unmanaged / Managed

**DN-80221-3** EAN 4016032467687 | L2 managed Gigabit Ethernet Switch 24-port + 2 combo and 2 SFP uplink port

## DIGITUS® 8 Port Gigabit PoE Switch, 19 Inch, Unmanaged, 2 Uplinks

**8 Port Gigabit Switch 8xRJ45 (6xPoE)+ 2G SFP 180W Support 802.3 af/at/bt standard**

**8 Port Gigabit PoE++ Switch with 2 x SFP Uplink Ports - supports up to 2 ports with full IEEE 802.03bt performance + total of 4 IEEE 802.3 at/af ports.**



### Technical Features

- Supports the PoE standards IEEE 802.3af, IEEE 802.3at & IEEE 802.3bt
- Total PoE budget of 180 W - supports PoE++
- 6 x RJ45 PoE Ports (2 x 90 W, 4 x 30 W)
- 2 x RJ45 Ports - usable as uplink or for LAN devices
- 2 x SFP Ports - for SFP modules (fiber glass/copper)
- Automatic detection of PoE devices - can also be used for non-PoE devices
- LED status displays on front panel
- Supports legacy BT, BT and UPoE modes
- PoE Standard 802.3af/at

**DN-95140** EAN 4016032467380 | 8 Port Gigabit Switch 8xRJ45 (6xPoE)+ 2G SFP 180W Support 802.3 af/at/bt standard



## NETWORK SWITCHES 10"

### DIGITUS® 16 Port Gigabit Switch, 10 Inch, Unmanaged

**Gigabit Ethernet Switch 16-port, 10 inch, unmanaged**

**Gigabit Ethernet Switch suitable for mounting in 10" (254 mm) enclosures**



#### Technical Features

- The LAN switch for 10" network cabinets has 16 RJ45 jacks and is ideal for small to medium-sized networks in private and business environments
- Thanks to the Auto MDI/MDIX function, it is no longer necessary to use crossover cables and uplink ports, since the PIN assignment of the connected device is checked by the switch before data transfer
- In full duplex mode, transfer rates of up to 20 / 200 / 2000 Mbit/s are achieved - the MAC storage corresponds to a size of 8000 MAC addresses - the backplane operates at 32 Gbit/s
- The power consumption of the Gbit network switch is 15 watts - the switch supports the following standards: IEEE802.3, IEEE802.3u, IEEE802.3ab and IEEE802.3x
- Combined with a 10-inch network cabinet and additional 10" components such as patch panels and socket strips, an efficient and compact network infrastructure can be assembled

**DN-80115** EAN 4016032460237 | Gigabit Ethernet Switch 16-port, 10 inch, unmanaged

### DIGITUS® 8 Port Gigabit Switch, 10 Inch, Unmanaged

**Gigabit Ethernet Switch 8-port, 10 inch, unmanaged**

**Ideal for use in 10" wall cabinets**



#### Technical Features

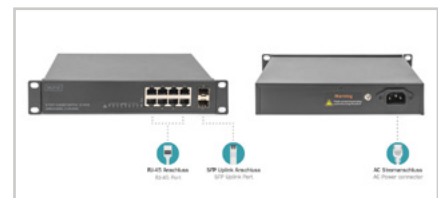
- The LAN switch for 10" network cabinets has 8 RJ45 jacks and is ideal for small to medium-sized networks in private and business environments
- Thanks to the Auto MDI/MDI-X function, it is no longer necessary to use crossover cables and uplink ports, since the PIN assignment of the connected device is checked by the switch before data transfer
- In full duplex mode, the switch reaches a respective data transfer rate of 20 / 200 / 2000 Mbit - the MAC storage corresponds to a size of 8000 MAC addresses - the backplane operates at 16 Gbps
- The power consumption of the Gbit network switch is 5 watts - the switch supports the following standards: IEEE802.3, IEEE802.3u, IEEE802.3ab and IEEE802.3x
- Combined with a 10-inch network cabinet and additional 10" components such as patch panels and socket strips, an efficient and compact network infrastructure can be assembled
- Gigabit Ethernet

**DN-80114** EAN 4016032441007 | Gigabit Ethernet Switch 8-port, 10 inch, unmanaged

### DIGITUS® 8 Port Gigabit Switch, 10 inch, Unmanaged, 2 Uplinks

**DIGITUS® 10" Switch 8 Port GE + 2SFP 8 x 10/100/1000 + 2 SFP**

**Gigabit switch for use in 10-inch chassis with 2 SFP uplinks - Simple and economical solution for expanding your network**



#### Technical Features

- 8 x RJ45 ports 10/100/1000 Mbps
- 2 x SFP uplink ports 1000 Mbps
- Network standards: IEEE802.3, IEEE802.3u, IEEE802.3ab
- Full-duplex flow control IEEE802.3x
- High backplane bandwidth of 20 Gbps
- Integrated power supply with fanless design
- Rugged 10" metal chassis
- SFP Uplink

**DN-80119** EAN 4016032479482 | 10" Switch 8 Port GE + 2SFP 8 x 10/100/1000 + 2 SFP

## DIGITUS® 8 Port Gigabit PoE Switch, 10 Inch, Unmanaged

**Gigabit Ethernet PoE switch 8-port PoE, 10 inch, 80W PoE budget**

**Ideal for use in 10" wall cabinets**



### Technical Features

- The PoE+ Network Switch for 10" Racks is compatible with the standards IEEE 802.3af & at for Power over Ethernet and ideally suited for small and medium-sized networks in private and business environments
- To supply the connected PoE devices with power, the LAN switch has a power budget of 80 watts, and a single port can supply a maximum of 30 watts
- Along with the PoE standards, the switch complies with the standards IEEE802.3, IEEE802.3u, IEEE802.3ab und IEEE802.3x - thanks to Auto MDI/MDI-X, the use of crossover patch cables is no longer necessary
- In full duplex mode, the switch reaches a respective data transfer rate of 20 / 200 / 2000 Mbit - the MAC storage corresponds to a size of 8000 MAC addresses - the backplane operates at 16 Gbps
- Combined with a 10-inch network cabinet and additional 10" components such as patch panels and socket strips, an efficient and compact network infrastructure can be assembled
- PoE Standard 802.3af/at

**DN-95317** EAN 4016032441038 | Gigabit Ethernet PoE switch 8-port PoE, 10 inch, 80W PoE budget

## DIGITUS® 8 Port Gigabit Switch, 10 Inch, Managed

**L2 managed Gigabit Ethernet Switch 8-port, 10 inch**

**L2+ managed Gigabit Switch - suitable for installation in 10-inch housing**



### Technical Features

- In spite of its compact dimensions, the managed L2+ Switch meets the highest network demands for professional applications, for example in small and mid-sized companies
- With the help of functions such as port control, port mirroring, VLAN and Multicast support, the switch can be used to establish and manage application convergence in medium-sized networks
- To manage the LAN switch, an independent web interface is available along with the protocols SNMP, SSH, CLI, Telnet, TACACS+ and RMON (including security features such as password protection)
- The total power consumption of the Gigabit Switch is max. 15 watts - Supported standards: IEEE802.3, IEEE802.3u, IEEE802.3ab, IEEE802.3x full-duplex flow control, IEEE802.3ab link aggregation
- Combined with a 10-inch network housing and additional 10" components such as patch panels and socket strips, an efficient and compact network infrastructure can be assembled
- Unmanaged / Managed

**DN-80117** EAN 4016032464358 | L2 managed Gigabit Ethernet Switch 8-port, 10 inch

## DESKTOP

## DIGITUS® Gigabit Ethernet PoE Switch 24 - port PoE + 2-port SFP, 370W PoE budget

**24-Port Gigabit + 2-Port Gigabit SFP Multi-Mode Unmanaged PoE Switch**

**No additional power supply unit is required for the connected devices. Minimize cabling for any PoE capable device.**



### Technical Features

- Supporting Normal mode, VLAN mode and Extend mode, flexible to switch
- Gigabit Ethernet Speed
- Additional 2 port SFP-Uplink for Fiber Technology
- Rack mountable in system rack (1U)
- 24 x 10/100 / 1000 Mbps self-adapting RJ45 ports, support port auto-flip (Auto MDI/MDIX);
- 2 x 1000 Mbps SFP ports;
- The UTP port supports the auto-negotiation function and automatically configures the transmission mode and the transmission rate;
- Use of Store-and-Forward architecture

**DN-95348-1** EAN 4016032480860 | 24-Port Gigabit + 2-Port Gigabit SFP Multi-Mode Unmanaged PoE Switch

## DIGITUS® 8-Port Switch, 10/100/1000 Mbps Gigabit Ethernet, Unmanaged, Metall Housing

**Digitus® 8 Port RJ 45 GE Switch 8 x 10/ 100 / 1000 Mbit/s**

**8-port 10/100/1000Mbps unmanage Gigabit Ethernet Switch, Auto-Negotiation RJ45 ports, All ports support Auto MDI/MDIX function**



### Technical Features

- 8 x RJ45 ports 10/100/1000 Mbps
- All ports support 10/100/1000 Mbps bandwidth
- Support desktop and Wall mount installation
- Switching Capacity: 16Gbps
- Network standards: IEEE 802.3i, IEEE 802.3u, IEEE802.3x, IEEE802.3ab, IEEE802.3az standards
- Auto-negotiation / Auto-MDI/MDI-X
- MAC address auto-learning and auto-aging
- LED indicators for monitoring power, link/activity
- Durable metal enclosure
- Fast Ethernet / Gigabit Ethernet

**DN-80066** EAN 4016032478683 | 8 Port RJ 45 GE Switch 8 x 10/ 100 /1000 Mbit/s

## DIGITUS® 16 Port FE PoE Switch , 2 GE Uplinks (RJ45 / SFP)

**16 Port 10/100 Mbps PoE Switch 16 x10/100Mbps PoE RJ45 Ports,1x GE RJ45,1x SFP**

**Key Function: VLAN & CCTV**



### Technical Features

- 16\*10/100Mbps PoE RJ45 Ports
- 1\*10/100/1000Mbps Combo Ports
- 1\*10/100/1000Mbps RJ45 Ports
- Complies with IEEE802.3af/at Power over Ethernet
- Supports PoE Power up to 30W for each PoE port
- Auto detect power device
- Remote power and Data feeding up to 100m
- Flow Control for Full Duplex operation and back pressure for Half Duplex Operation
- Support VLAN and CCTV function
- 8K MAC address, automatic address learning and address aging
- Support Energy-Efficient Ethernet (EEE) function IEEE802.3az
- Support PD Alive function the switch port is disconnected will automatically connected
- SFP Uplink

**DN-95355** EAN 4016032485056 | 16 Port 10/100 Mbps PoE Switch 16 x10/100Mbps PoE RJ45 Ports,1x GE RJ45,1x SFP

## DIGITUS® 16+2 Port 10/100/1000 Mbps + 2 Gigabit SFP PoE Switch

**16+2 Port GE + 2GE SFP Uplink PoE Switch 16+2 Port 10/100/1000 Mbps + 2GE SFP PoE Switch**

**Key function: VLAN & CCTV**



### Technical Features

- 16\*10/100/1000Mbps PoE RJ45 connections
- 2\*10/100/1000Mbps combo connections
- 2\*1000Mbps RJ45 connections
- Corresponds to IEEE802.3af/at Power over Ethernet
- Supports PoE power up to 32W for each PoE port
- Automatic detection of power supply device
- Remote supply of power and data up to 100 m
- Flow control for full duplex operation and back pressure for half duplex operation
- Supports VLAN and CCTV function
- 8K MAC address, automatic address learning and address aging
- Supports energy-efficient Ethernet (EEE) function IEEE802.3az
- Supports the PD alive function, i.e. the switch port is automatically reconnected after an interruption
- PoE Standard 802.3af/at

**DN-95358** EAN 4016032485445 | 16+2 Port GE + 2GE SFP Uplink PoE Switch 16+2 Port 10/100/1000 Mbps + 2GE SFP PoE Switch

## DIGITUS® 8 Port Gigabit PoE Switch, Managed, 2 Uplinks

**L2 managed Gigabit Ethernet PoE Switch 8-port PoE + 2-port SFP, 86W PoE budget**

**Integrated Power over Ethernet (PoE) and network management features for small and medium network environments**



### Technical Features

- 8-Port 10/100/1000Base-T with PoE support
- 2-Port Gigabit SFP Uplink
- Meets the network standards IEEE 802.3, IEEE802.3ad, IEEE802.1d, IEEE 802.3u, IEEE 802.3ab, IEEE802.1p, IEEE802.1x, IEEE802.1q, IEEE802.1w, IEEE802.1s, IEEE802.1z, IEEE802.3ah, IEEE802.1ag, IEEE 802.3af and IEEE802.3at
- Supports Port Configuration, PoE Port Configuration, Port Mirroring, Bandwidth Control, Broadcast Power Control
- Maximum PoE power of 86 watts
- Unmanaged / Managed

**DN-95344** EAN 4016032455103 | L2 managed Gigabit Ethernet PoE Switch 8-port PoE + 2-port SFP, 86W PoE budget

## INDUSTRIAL

## DIGITUS® 8-Port 10/100/1000BASE-TX+1-Port 1000Base-FX Industrial PoE Switch

**Industrial 8+1 -Port Gigabit Ethernet PoE Switch Unmanaged, 8 RJ45 Ports 10/100/1000 Mbits**

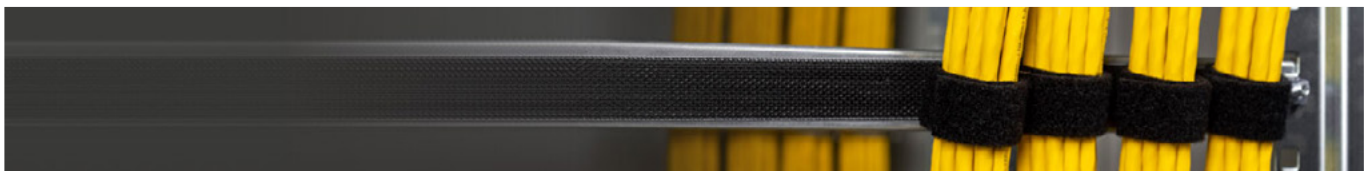
**DN-6511317 is a industrial graded 9-port Ethernet Switch, provides non-blocking wire-speed performance •in harsh industrial environment.**



### Technical Features

- The use of high quality photoelectric integration module to provide good optical and electrical characteristics
- Ensure reliable data transmission and long working life
- Support full duplex or half duplex mode, with automatic negotiation capability
- Network port support automatic cross identification
- Internal storage and forwarding mechanism
- In line with industrial operating standards, the average trouble-free work in more than 300,000 hours
- Working power supply: DC 48-57V to provide reverse protection
- Lightning Surge Protection (Power): 5000A(8/20μs)
- PoE Standard 802.3af/at

**DN-651137** EAN 4016032486077 | Industrial 8+1 -Port Gigabit Ethernet PoE Switch Unmanaged, 8 RJ45 Ports 10/100/1000 Mbits



## DIGITUS® Velcro cable management system

The DIGITUS® Velcro - cable management system is used for fast and optimal cable routing in network cabinets and wall-mounted enclosures.

The innovative Velcro cable management system consists of two components:

1. self-adhesive mushroom head tape, which adheres to all non-powder-coated surfaces in the cabinet. Please degrease before use.

2. fleece/Velcro tape, which is ideal for bundling cable harnesses in the cabinet. Intended use

- Optimally suited for bundling all common data cables (copper as well as fiber optics)
- Bundling of 2 - 48 data cables is possible without any problems (diameter up to 60 mm and more).

### Ordering information

- DN-CT-5M-25  
mushroom head tape 2,5 m self-adhesive, velcro tape 5,0 m
- DN-CT-10M-25  
Mushroom head tape 5.0 m self-adhesive, loop/velcro tape 10.0 m



## DIGITUS® Industrial 16-Port Gigabit Switch, unmanaged

**16 Port 10/100/1000Mbps Industrial Switch Wall-mount and DIN-Rail**

**Robust and durable industrial solution for high temperature ranges and rough industrial environments - redundant power supply possible**



### Technical Features

- 16 x RJ45 ports 10/100/1000 Mbps
- Suitable for high temperature ranges from -40 °C to +80 °C
- Redundant power supply via terminal clamps
- Suitable for mounting on DIN rails (profile rail)
- Protects against impact and vibrations
- Integrated surge protection
- Full-duplex flow control IEEE802.3x
- Auto-Negotiation / Auto MDI/MDI-X Function
- Fanless design with protection type IP40
- 1- 16 Ports

**DN-651129** EAN 4016032478089 | 16 Port 10/100/1000Mbps Industrial Switch Wall-mount and DIN-Rail

## DIGITUS Industrial 8 + 4 10G Uplink Port L3 managed Gigabit Ethernet Switch

**Ind. 8+4SFP+PortL3 managed Gigabit Ethernet Switch 8 x GE RJ45 + 4 SFP+ Port**

**With the DN-651160 you get a high-performance industrial switch that meets the highest demands for performance, reliability and flexibility**



### Technical Features

- Data control: support 802.3X full-duplex flow control, support network storm suppression
- Redundant network: support STP/RSTP/MSTP, support ERPS (self-healing time <20ms)
- Multicast management: support IGMP Snooping V1/V2/V3
- Redundancy backup: supports the virtual route redundancy protocol VRRP
- VLAN: Support IEEE 802.1Q VLAN, effectively isolate the broadcast domain
- Link aggregation: support link static/dynamic aggregation, providing perfect bandwidth utilization
- QoS: Support COS\DSCP, 4 queues, support WRR\SP scheduling mode
- Security management: support ACL access control list, support 802.1X
- Management function: support WEB, CLI, SNMP
- management methods
- Monitoring and maintenance: support port mirroring, interface status monitoring, log management
- Supports static routes. IPV6

**DN-651160** EAN 4016032490241 | Ind. 8+4SFP+PortL3 managed Gigabit Ethernet Switch 8 x GE RJ45 + 4 SFP+ Port

## DIGITUS® 8-port 10/100/1000BASE-TX+1000Base-FX Industrial Ethernet Switch

**Industrial 8 +1-Port Gigabit Ethernet Switch Unmanaged, 8 RJ45 Ports 10/100/1000 Mbits**

**DN-6511316 is a industrial graded 9-port Ethernet Switch, provides non-blocking wire-speed performance in harsh industrial environment.**



### Technical Features

- The use of high quality photoelectric integration module to provide good optical and electrical characteristics
- Ensure reliable data transmission and long working life
- Support full duplex or half duplex mode, with automatic negotiation capability
- Network port support automatic cross identification
- Internal storage and forwarding mechanism
- In line with industrial operating standards, the average trouble-free work in more than 300,000 hours
- Working power supply: DC 12-52V to provide reverse protection
- Lightning Surge Protection (Power): 5000A(8/20μs)
- SFP Uplink

**DN-651136** EAN 4016032486060 | Industrial 8 +1-Port Gigabit Ethernet Switch Unmanaged, 8 RJ45 Ports 10/100/1000 Mbits

## POE INJECTORS

### DIGITUS® 24 Port Gigabit Ethernet PoE+ Injector, 802.3af/at, 370 W

Gigabit Ethernet PoE+ Injector Hub, 802.3at, 10G 24-port, Power Pins:3/6(+), 1/2(-), 370W

Minimization of the cabling costs for PoE-capable devices



#### Technical Features

- 24 gigabit ports with PoE+ support
- 370 watt performance with up to 30 watts per port
- Compatible with the IEEE802.3af and IEEE802.3at standards
- Automatic surge protection
- Supports bandwidth up to 10Gbps

**DN-95117** EAN 4016032430384 | Gigabit Ethernet PoE+ Injector Hub, 802.3at, 10G 24-port, Power Pins:3/6(+), 1/2(-), 370W

### DIGITUS® 16 Port FE PoE Switch , 2 GE Uplinks (RJ45 / SFP)

16 Port 10/100 Mbps PoE Switch 16 x10/100Mbps PoE RJ45 Ports,1x GE RJ45,1x SFP

Key Function: VLAN & CCTV



#### Technical Features

- 16\*10/100Mbps PoE RJ45 Ports
- 1\*10/100/1000Mbps Combo Ports
- 1\*10/100/1000Mbps RJ45 Ports
- Complies with IEEE802.3af/at Power over Ethernet
- Supports PoE Power up to 30W for each PoE port
- Auto detect power device
- Remote power and Data feeding up to 100m
- Flow Control for Full Duplex operation and back pressure for Half Duplex Operation
- Support VLAN and CCTV function
- 8K MAC address, automatic address learning and address aging
- Support Energy-Efficient Ethernet (EEE) function IEEE802.3az
- Support PD Alive function the switch port is disconnected will automatically connected

**DN-95355** EAN 4016032485056 | 16 Port 10/100 Mbps PoE Switch 16 x10/100Mbps PoE RJ45 Ports,1x GE RJ45,1x SFP

### DIGITUS® 16 Port Gigabit PoE Switch, 19 Inch, Unmanaged, 2 SFP Uplink

16-Port Gigabit + 2-Port Gigabit SFP Multi-Mode Unmanaged PoE Switch

Gigabit Ethernet PoE Switch 16-port PoE + 2-port SFP, 247W PoE budget



#### Technical Features

- Thanks to the PoE function, no additional power supply unit is required for the connected devices Minimize cabling for wireless APs, IP telephones, and any other PoE capable device
- Supporting Normal mode, VLAN mode and Extend mode, flexible to switch
- PoE power budget: 247 Watts
- Gigabit Ethernet Speed
- Additional 2 port SFP-Uplink for Fiber Technology
- Rack mountable in system rack (1U)
- 2 adaptive 1000 Mbps fiber optic ports;
- The UTP port supports the auto-negotiation function and automatically configures the transmission mode and the transmission rate;
- Use of Store-and-Forward architecture

**DN-95347-1** EAN 4016032480853 | 16-Port Gigabit + 2-Port Gigabit SFP Multi-Mode Unmanaged PoE Switch

## DIGITUS® Industrial Gigabit Ethernet PoE+ Injector, 802.3 af/at, 60 W

Industrial Gigabit PoE+ Injector 802.3at 60W power output, DIN rail and wall mount design

High Power output with 60 watts



### Technical Features

- Industrial Gigabit PoE+ Injector 802.3 af/at
- Meets the 802.3af/at PoE standard
- 48~55V output voltage, 60W

**DN-651112** EAN 4016032445845 | Industrial Gigabit PoE+ Injector 802.3at 60W power output, DIN rail and wall mount design

## DIGITUS® Passive PoE Wall Mount Box, RJ45/DC/PoE

Passive PoE wall mount box 1x RJ45, 1x DC, 1x PoE

Simplifies your Ethernet-enabled device installations by combining power and data onto one cable



### Technical Features

- Easily merge of power and data cables into a single cable
- Connection: 10/100 Mbit/s
- Assignment: 1/2/3/6 for data transfer, 4/5/7/8 for power supply

**DN-95002** EAN 4016032260257 | Passive PoE wall mount box 1x RJ45, 1x DC, 1x PoE

## POE EXTENDER

## DIGITUS® 4 Port Gigabit 4PPoE Extender, 802.3at, 60 W

Gigabit PoE Indoor Extender, 4-port, 85W 100m extension, cascable, self powered

Extends the range of your PoE network by up to 100 m



### Technical Features

- Supports 2/4 ports with PoE+, PoE
- Transfers data and power to your (PoE) network devices over one network cable
- No additional power supply needed
- Automatic detection of PoE network devices
- Easy installation thanks to Plug and Play
- Full bandwidth over the entire PoE distance

**DN-95128-1** EAN 4016032486121 | Gigabit PoE Indoor Extender, 4-port, 85W 100m extension, cascable, self powered

## DISCOVER OUR POE ASSORTMENT



Learn more:

<https://de.assmann.shop/en/Active-Network-Components/Power-over-Ethernet-PoE/>



## DIGITUS® 1 Port zu 2 Port Fast Ethernet PoE+ Repeater, 802.3 af/at

Fast Ethernet PoE Extender 1-port PoE in / 2-port PoE out IEEE802.3af/at

Extend your 100m Ethernet signal up to 300 meters!



### Technical Features

- Ethernet IEEE802.3 / 802.3u / IEEE802.3 af/at
- Ethernet Speed: 10/100Mbps Fast Ethernet
- Transmission range up to 300 meters by cascading the repeaters.
- PoE - Power over Ethernet
- No additional power supply necessary
- Operating Temperature: -40°C to 75°C
- Dimensions (L x W x H): 103 x 82 x 25mm
- Weight: 195g
- Industrial usage: no
- Managed: no
- Outdoorsuitable: no
- PoE (Power over Ethernet): no
- Protection against vanadism: no
- VLAN: no

**DN-95122** EAN 4016032365327 | Fast Ethernet PoE Extender 1-port PoE in / 2-port PoE out IEEE802.3af/at

## DIGITUS® Gigabit Ethernet PoE+ Repeater, 802.3at, 22 W

Gigabit Ethernet PoE+ Extender, 802.3at 1-port, Power Pins:3/6(+), 1/2(-), 22W

Extend an existing PoE connection over the 100m distance limit



### Technical Features

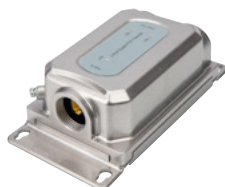
- Gigabit Ethernet
- Fanless design ensures a quiet operation
- Fixing points for wall installation
- Requires no external power supply unit
- Automatic detection of PoE-enabled devices

**DN-95123** EAN 4016032391531 | Gigabit Ethernet PoE+ Extender, 802.3at 1-port, Power Pins:3/6(+), 1/2(-), 22W

## DIGITUS® Outdoor 1 to 2 port UPoE Extender, IEEE803.2af/at 2 Port

Outdoor 1 to 2 UPoE Extender IEEE803.2af/at 1 port in 95W, 2 ports out supports 75W/30W/15,4W

Complies with IEEE802.3af/at/bt Standard



### Technical Features

- Metall shell, protection level IP67, IK10 vandal proof
- complete unit does not require power adapter
- 95 W PD Input, Two PSE output
- Data and power carried over the same cable
- Support Pnp for the devices without any configuration
- Support 10/100/1000 Mbps data transmission
- 10/100/1000 Mbps data transmission and PoE power supply distance up to 100 M
- operating temperature: -20°C to 60°C C
- It`s ideal for harsh outdoor environment

**DN-95126-1** EAN 4016032479710 | Outdoor 1 to 2 UPoE Extender IEEE803.2af/at 1 port in 95W, 2 ports out supports 75W/30W/15,4W



## POE SPLITTER

### DIGITUS® Passive PoE Cable Kit, Splitter + Injector

Passive PoE Cable Kit 1x Splitter PD cable, 1x Injector PSE cable, White

**Simplifies your Ethernet-enabled device installations by combining power and data onto one cable**



#### Technical Features

- Easily merge of power and data cables into a single cable
- Connection: 10/100 Mbit/s
- Assignment: 1/2/3/6 for data transfer, 4/5/7/8 for power supply

**DN-95001** EAN 4016032260240 | Passive PoE Cable Kit 1x Splitter PD cable, 1x Injector PSE cable, White

### DIGITUS® Industrial Gigabit PoE++ Splitter, 802.3bt

Industrial Gigabit PoE++ Splitter, 802.3bt selectable power output: 12VDC, 16VDC, 24VDC, 48VDC

**Designed for harsh environments where they are exposed to moisture, temperature fluctuations and vibration**



#### Technical Features

- Gigabit Splitter with up to 95W PoE feed
- Flexibly adjustable output voltage: 12VDC, 16VDC, 24VDC, 48VDC
- Gigabit data output for network connection

**DN-651111** EAN 4016032441182 | Industrial Gigabit PoE++ Splitter, 802.3bt selectable power output: 12VDC,16VDC,24VDC,48VDC

### DIGITUS® Gigabit Ethernet PoE+ Splitter, 802.3at, 24 W

Gigabit Ethernet PoE+ Splitter, 802.3at Output: 5V/2A, 9V/2A, 12V/2A, 24W

**Integrates Power over Ethernet technology to older non PoE network devices**



#### Technical Features

- Gigabit Ethernet Speed
- Fanless design ensures a quiet operation
- Requires no external power supply unit
- Adjustable output 5V/2A , 9V/2A, 12V/2A
- Support 5.5mm and 3.5mm power jack

**DN-95205** EAN 4016032423942 | Gigabit Ethernet PoE+ Splitter, 802.3at Output: 5V/2A, 9V/2A, 12V/2A, 24W

## DIGITUS® PERIPHERAL INFRASTRUCTURE



### VIDEO EXTENDER

#### DIGITUS® HDMI KVM Extender over IP, Set

**HDMI KVM Extender, 120 m, Full HD, 1080p over network cable (Cat 5, 5E, 6)**

**Extends the HDMI signal to up to 120 m and offers the possibility of controlling the keyboard and mouse via USB on the receiver unit**



#### Technical Features

- Extends the maximum length for HDMI cable to up to 120 m via a simple network cable
- Extension of the signal (unlimited distance) over the existing local network infrastructure (over IP connection)
- Highest supported video resolution: 1080p / 60 Hz
- Supports KVM function - convenient control of mouse and keyboard via USB on the receiver unit
- Supports LAN-standard 802.3 Ethernet
- 10/100/100 Mbps
- LED activity indicator for function, keyboard and mouse

**DS-55202** EAN 4016032429432 | HDMI KVM Extender, 120 m, Full HD, 1080p over network cable (Cat 5, 5E, 6)

#### DIGITUS® 4K HDMI Extender Set, 4K/60Hz

**4K HDMI 2.0 Extender Set, UHD 4K\*2K@60 Hz 30/60 m over network cable (Cat 6, 6a, 7)**

**Extends the maximum length for HDMI cables to up to 60 m whereby only a simple network cable is used between a transmitter and a receiver unit**



#### Technical Features

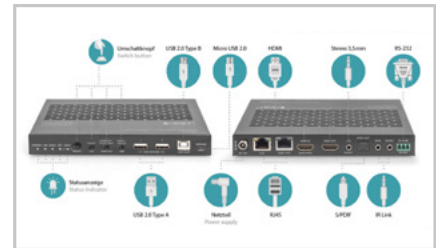
- Extends 4K2K/60Hz video content to up to 30m
- Extends 4K2K/30Hz video content to up to 60m
- Supports 4K Ultra HD (60Hz), 4096 x 2160p
- resolution
- Integrated IR interface - Easy to control the input source using a remote control
- Supports CAT 6 and CAT 6A network cables
- Supports HDCP 2.2

**DS-55204** EAN 4016032436270 | 4K HDMI 2.0 Extender Set, UHD 4K\*2K@60 Hz 30/60 m over network cable (Cat 6, 6a, 7)

## DIGITUS® HDMI HDBaseT™ 3.0 Extender Set, 100 m

**HDBaseT 3.0 KVM Extender Set, 100 m USB 2.0, PoC, RS232, IR, eARC/ARC, black**

**Uncompressed signal transmission in 4K/60Hz, 4:4:4 at 18 GB/s over a distance of 100 m via CAT 6A (or higher) cables**



### Technical Features

- HDBaseT™ 3.0 technology
- HDMI 2.0b, HDCP 2.2
- Uncompressed signal transmission in 4K/60Hz, 4:4:4 at 18 GB/s
- Transmission distance of up to 100 m via CAT 6A (or higher) cables
- 2x USB-A 2.0 connection on each unit for KVM function (keyboard, mouse, webcam), connection of USB data storage media, etc.
- eARC/ARC function
- PoC (Power over Cable) - Only the unit requires an external power adapter
- R232 signal transmission
- 1x RJ45 (Gigabit Ethernet) network connection on each unit - bi-directional Ethernet transfer
- 1x HDMI loop-out to the transmitter unit

**DS-55523** EAN 4016032483700 | HDBaseT 3.0 KVM Extender Set, 100 m USB 2.0, PoC, RS232, IR, eARC/ARC, black

## DIGITUS® Click & Present Pro - Wireless Collaboration System

**Click & Present - Wireless Collaboration System HDMI, 2x TX, 1x RX**

**Wireless collaboration/presentation system - Present from your notebook, tablet or smartphone**



### Technical Features

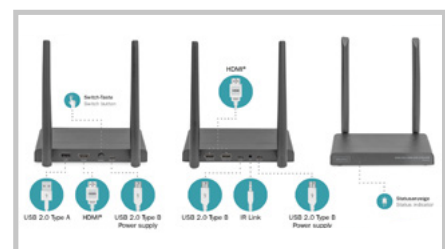
- Share, present and collaborate from your notebook, tablet or smartphone - Transmission distance of up to 50 m
- Easy installation - No software or app required
- Present simultaneously from up to 4 participants in split screen
- Up to 30 participants (simultaneous connection to receiver)
- Share notebook via HDMI transmitter or via wireless screen (Windows)/screen sync (macOS)
- Share from a tablet/smartphone using the screen sync (iOS, iPadOS/Android) of your mobile device
- Touch Panel Back Control - the touch back function of the receiver unit allows finger gestures/controls on a large touch screen to be sent back wirelessly to a Windows PC
- Integrated Whiteboard - the main menu of the receiver provides a whiteboard function and in combination with a touchscreen, allows quick notes during the meeting, the presentation directly on the display
- Supports Windows, macOS, iOS, iPadOS, Android
- Expandable with additional HDMI transmitters - DS-55322

**DS-55317** EAN 4016032478492 | Click & Present - Wireless Collaboration System HDMI, 2x TX, 1x RX

## DIGITUS Wireless HDMI KVM Extender Set, 200 m

**Wireless HDMI KVM Extender Set 200 m, Full HD**

**Wirelessly transmits HDMI video and audio signals in Full HD over a distance of up to 200 m with an unobstructed view and offers KVM functionality**



### Technical Features

- Wireless HDMI signal transmission up to 200 m (with unobstructed view)
- Point-to-point connection - 1x transmitter (source) + 1x receiver (output device)
- Supports transmissions resolutions up to Full HD (1080p / 60 Hz)
- KVM functionality for connection to mouse and keyboard
- Touch Screen Back Control - Supports touch screen panels (via USB connection on the receiver)
- Supports input signals with up to 4K/60Hz
- HDMI loop-out for connection of a local monitor to the transmitter unit
- Auto-pairing function - No configuration required
- AES 128 bit encryption
- WPA2 protocol

**DS-55321** EAN 4016032478812 | Wireless HDMI KVM Extender Set 200 m, Full HD

## DIGITUS® Wireless HDMI Extender Set, 50 m

**Wireless HDMI Extender Set, 50m Dongle, 1 to 1, Full HD**

**Wirelessly transmits HDMI video and audio signals in Full HD over a distance of up to 50 m with an unobstructed view**



### Technical Features

- Multimedia transmission: The HDMI Extender Set from DIGITUS® based on radio technology enables wireless transmission of audio and video signals in Full-HD quality (1080p / 60 Hz)
- No software installation required: To establish the connection, the transmitter and receiver units linked by the manufacturer are simply inserted into the source and receiver devices
- Range: The transmission distance is up to 50 m with unobstructed view - With a restricted visual range, the maximum range cannot be determined generally and depends on the specific circumstances where installed
- Private and professional applications: The streaming solution is suitable for subsequent or last-minute video transmissions (film night, home

cinema, public broadcast, meeting, conference and meeting room, presentation)

- Device requirements: All devices with HDMI interface / Receiver: TV, monitor, projector, etc. / Transmitter: Notebook, computer, Blu-ray & DVD player, set top box, gaming consoles, etc.

**DS-55318** EAN 4016032478744 | Wireless HDMI Extender Set, 50m Dongle, 1 to 1, Full HD

## DIGITUS 4K All-in-One Video Bar Pro – Video Conference System

**4K All-in-One Video Bar, Set ePTZ, AI, 4x mic/1x speaker, 1x table mic**

**The DIGITUS® video conferencing system combines camera, microphone and speaker in one device and is suitable for small to medium-sized rooms.**



### Technical Features

- 4K Ultra-HD ePTZ (electronic Pan-Tilt-Zoom) camera
- Ultra wide angle lens – 120° diagonal, 110° horizontal, 78° vertical
- 4K Ultra HD video calls (up to 3840 x 2160 pixels / 30 frames per second)
- 2.8" Sensor (Sony IMX415), 8 MP
- Auto-framing, Smart Zoom (4x digital zoom) &

AI Face/Speaker Tracking – The video bar uses AI (Artificial Intelligence) to automatically adjust the camera position, focus and zoom in order to optimally capture the video participants.

- Beamforming microphones – 4 integrated beamforming microphones for speech capture and 5m audio range (voice pick-up)
- Digital noise reduction & acoustic echo

cancellation – suppresses undesirable background noise and eliminates echoes

- Additional table microphone included – additional 3m voice pick-up (audio range), connection to video bar via network cable (10m, incl.)
- Hi-Fi speaker with 5W max.
- Remote control included for convenient control of functions

**DS-55580** EAN 4016032487043 | 4K All-in-One Video Bar, Set ePTZ, AI, 4x mic/1x speaker, 1x table mic

## VIDEO CONVERTER

### DIGITUS® HDMI to VGA Converter

**HDMI to VGA converter adapter Typ A - VGA (D-Sub) connector, 3,5mm audio jack**

**Converts an HDMI signal into a VGA signal**



### Technical Features

- Converts video and audio signals from HDMI to VGA
- Connect your modern playback devices with older VGA monitors or projectors
- No software or driver installation required
- No power supply unit required

**DA-70461** EAN 4016032368007 | HDMI to VGA converter adapter Typ A - VGA (D-Sub) connector, 3,5mm audio jack



## DIGITUS® VGA - HDMI Converter

**VGA to HDMI Converter + Audio (3.5mm) Full HD (1080p), cable type (15 cm), black**

**Converts your analog VGA signal to a digital HDMI signal**



### Technical Features

- Converts video and audio signals from VGA to HDMI
- Connect older devices with a VGA port to TV sets, monitors or projectors with an HDMI port
- Additional audio transmission (3.5 mm jack)
- Power supply via USB
- No software or driver installation is required

**DA-70473** EAN 4016032444213 | VGA to HDMI Converter + Audio (3.5mm) Full HD (1080p), cable type (15 cm), black

## DIGITUS® 3-Port MST Video Hub (USB-C™ -> 3x HDMI)

**USB-C™ - 3x HDMI MST Video Hub DP 1.4, HDMI 2.0, 4K/60Hz**

**MST Hub for connection of up to 3 external monitors via a video output on the notebook/PC - Increase your productivity with multiple screens**



### Technical Features

- Supports DP 1.4 (Alt mode) with maximum 8.1 Gbps per channel, max. 32.4 Gbps on 4 channels
- Supports Windows OS (11, 10)
- Resolutions 3 external monitors - MST mode: max. 1x 4K/60Hz + 2x 4K/30Hz
- Resolutions 2 external monitors - MST mode: max. 2x 4K/60Hz
- Power supply via a USB-C™ connection - BUS powered
- No driver or software required - Configuration via the display settings in Windows OS
- Supports 3 display modes: Mirror (1 signal mirrored on 3 displays), extend (3 signals on 3 displays), distribute (1 signal distributed across 3 displays)
- Supports HDR (High Dynamic Range)
- Supports MST (Multi Stream Transport) & SST - Single Stream Transport

**DS-45333** EAN 4016032481751 | USB-C™ - 3x HDMI MST Video Hub DP 1.4, HDMI 2.0, 4K/60Hz

## DIGITUS® 3-Port MST Video Hub (DP -> 2x DP, 1x HDMI)

**4K DP - 2x DP + HDMI MST Video Splitter/Hub**

**MST Hub for connection of 3 external monitors via a video output on the notebook/PC - Increase your productivity with multiple screens**



### Technical Features

- MST (Multi Stream Transport) function - Distribute independent AV signals from one source device to 3 external monitors
- Supports 3 display modes: Mirror (1 signal mirrored on 3 displays), extend (3 signals on 3 displays), distribute (1 signal distributed across 3 displays)
- Supports Windows OS (11, 10)
- Supports up to 4K2K/60 Hz, HDR (Single, Dual Display max.)
- Supports 4K2K/30 Hz, HDR (Triple Display)
- No driver or software required - Configuration via the display settings in Windows OS
- Aluminum housing
- Power supply via USB-C™ connection (min. 10W, 5V/2A required)
- DP 1.2
- HDCP 2.1

**DS-45336** EAN 4016032481805 | 4K DP - 2x DP + HDMI MST Video Splitter/Hub

**DIGITUS® 4K HDMI Splitter, 1x16**

**4K HDMI Splitter, 1x16 4K/60Hz, 18Gbps, HDR, Downscaling, EDID**  
**Distributes an HDMI signal onto 16 screens in UHD resolution (4K/60Hz)**



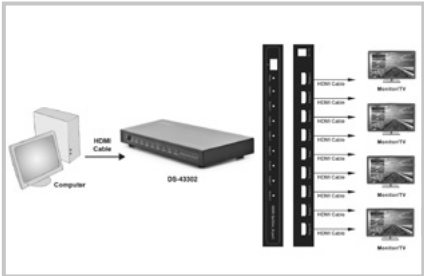
Technical Features

- Supports 4K2K/60Hz (HDR, 4:4:4)
- Video bandwidth: 18 Gbps
- Down-scaling function (4K -> 1080p) - Mixed operation of Full HD + 4K screens possible
- EDID management
- HDMI 2.0
- HDCP 2.2 / 1.4
- Separate on/off switch
- Status LEDs
- Supports High Dynamic Range (HDR)

**DS-45328** EAN 4016032479994 | 4K HDMI Splitter, 1x16 4K/60Hz, 18Gbps, HDR, Downscaling, EDID

**DIGITUS HDMI Splitter, 1x8**

**HDMI Splitter, 1x8, 1080p, 3D, High Speed 2.25 Ghz/225 MHz, metal housing, black**  
**Splitting of HDMI video signals to up to eight output devices (TVs, monitors, displays)**



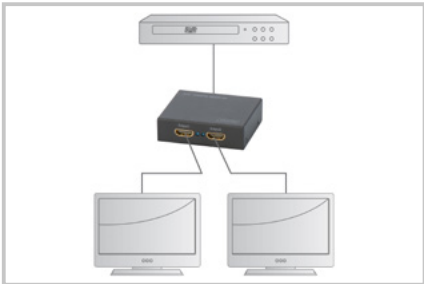
Technical Features

- Splitting of HDMI video signals to up to eight playback devices
- Video resolution: 1920 x 1200, 1080p
- Supports Standard HDMI
- Supports HDCP
- Supports compressed audio formats, for example, DTS Digital, Dolby Digital (including DTS-HD and Dolby TrueHD)
- Cascadable (one level) to up to 64 HDMI ports

**DS-43302** EAN 4016032387176 | HDMI Splitter, 1x8, 1080p, 3D, High Speed 2.25 Ghz/225 MHz, metal housing, black

**DIGITUS® 4K HDMI Splitter, 1x2**

**4K HDMI Splitter 1x2, supports 4K2K,3D video formats, black**  
**Experience your media content on up to two monitors, televisions or projectors simultaneously in 4K UHD resolution!**



Technical Features

- Easily connect two devices (televisions, monitors, projectors) to one HDMI input source
- The integrated HDMI signal amplifier supports additional cable lengths of 5 m (Standard HDMI) and even up to 15 m (High Speed HDMI)
- Supports 4K Ultra HD (30Hz), 4096 x 2160 pixel resolution
- Supports Full HD, Full 3D, 4K2K video

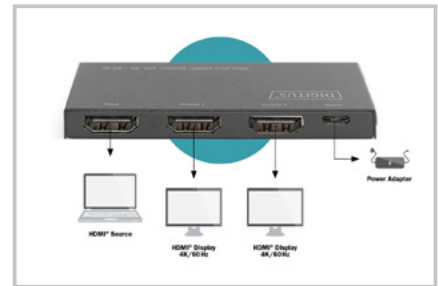
**DS-46304** EAN 4016032366225 | 4K HDMI Splitter 1x2, supports 4K2K,3D video formats, black

## VIDEO SPLITTER

### DIGITUS Ultra Slim HDMI Splitter, 1x2, 4K/60Hz HDR, HDCP 2.2, 18 Gbps, Micro USB powered

Ultra Slim HDMI Splitter, 1x2, 4K/60Hz HDR, HDCP 2.2, 18 Gbps, Micro USB powered

Splits one HDMI signal on two displays - supports UHD 4K / 60 Hz with HDR



#### Technical Features

- Resolutions of up to 4K / 60 Hz (4:4:4)
- Full 18 Gbps - for a crystal clear display of UHD contents
- Supports HDR & HDCP 2.2
- Power supply via Micro USB (charging adapter, TV, notebook)
- Cascading of up to 8 splitters in a row
- Ultra slim design
- Compatible with the latest Ultra High Definition (UHD) standards
- Protection from Electrostatic Discharges (ESD)
- Plug and Play

**DS-45322** EAN 4016032465058 | Ultra Slim HDMI Splitter, 1x2, 4K/60Hz HDR, HDCP 2.2, 18 Gbps, Micro USB powered

### DIGITUS® HDMI® Splitter, 1x4, 4K / 60 Hz with Downscaler

4K HDMI Splitter, 1x4, 4K2K, UHD/60Hz EDID, HDR, HDCP, black

Splits an HDMI® signal on four displays - supports UHD 4K / 60 Hz with HDR and downscaling on Full HD



#### Technical Features

- Resolutions of up to 4K / 60 Hz (YUV 4:4:4)
- Full 18 Gbps - for a crystal clear display of UHD contents
- Downscaling 4K contents on Full HD displays
- (also Full HD & 4K mixed operation)
- Auto-EDID - Automatically reads the EDID data of the connected display
- Supports HDR & HDCP 2.2
- Compatible with the latest Ultra High Definition (UHD) standards
- Plug and Play
- Downscaling is ambient light compatible

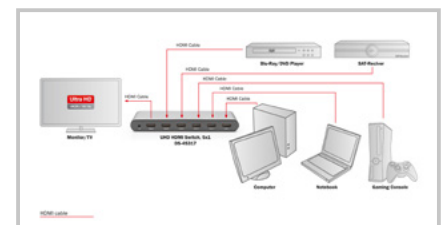
**DS-45325** EAN 4016032465249 | 4K HDMI Splitter, 1x4, 4K2K, UHD/60Hz EDID, HDR, HDCP, black

## VIDEO SWITCHER, MATRICES, VIDEO WALL CONTROLLER

### DIGITUS® 4K HDMI Switch, 5x1

4K Highspeed HDMI 2.0 Switch, 5x1 UHD 4K\*2K@60Hz, Full 3D, aluminum housing, black

Discover the full potential of UHD - it supports 4K2K (60Hz)



#### Technical Features

- Convenient switching between up to five HDMI sources without the burdensome reconnection
- Discover the full potential of UHD - it supports 4K2K (60Hz)
- Resolutions: 4K (60Hz), 4K (30Hz), 1080p, 1080i, 720p, 576p, 576i, 480p, 480i
- Supports HDCP 2.2
- Supports 600 MHz (max.) bandwidth - 6 Gbit/s
- (max.) transfer rate per channel
- Premium aluminum housing

**DS-45317** EAN 4016032442493 | 4K Highspeed HDMI 2.0 Switch, 5x1 UHD 4K\*2K@60Hz, Full 3D, aluminum housing, black

## DIGITUS® 8K HDMI Switch, 2x1

### 8K HDMI Switch, 2x1 black

Convenient switching between two 8K HDMI signal sources by pressing a button or automatic detection - without the trouble of replugging cables.



#### Technical Features

- Supports resolutions up to 8K/60Hz
- HDMI 2.1
- Switching of signal source via changeover switch
- Automatic detection: If two sources are connected, the switch detects which is switched on and changes to this input
- Plug & Play
- Data rate: up to 12 Gbps
- Supports HDR (High Dynamic Range)
- Power supply via Micro-USB cable
- Supports HDMI 2.1, 2.0 and 1.4 signal speeds

DS-45341 EAN 4016032483663 | 8K HDMI Switch, 2x1 black

## DIGITUS® 4K HDMI® Matrix Switch, 4x4, 19"

### 4x4 HDMI Matrix Switch, 19 inch 4K/60Hz, silver/black

Distribute up to four different HDMI® signals on up to four HDMI® displays independently of one another with UHD resolutions up to 4K



#### Technical Features

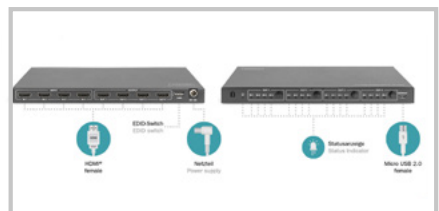
- Supports UHD resolutions of up to 4K / 60 Hz
- Can be installed in 19" racks/cabinets (1U)
- Output of up to 4 HDMI® signals on 4 HDMI® displays possible either simultaneously or independently
- Any input can be switched to any output
- The inputs can be assigned to different outputs or all outputs as desired - including parallel assignment
- Convenient switching between all connections using remote control, RS232 or on the device itself
- Configuration also possible via RS232 interface
- HDMI® bandwidth of 18 Gbps for smooth playback in extremely high resolution
- Plug and Play - no software or driver installation required

DS-43308 EAN 4016032467359 | 4x4 HDMI Matrix Switch, 19 inch 4K/60Hz, silver/black

## DIGITUS® 4x4 HDMI Matrix Switch, 4K/60Hz

### 4x4 HDMI Matrix Switch, 4K/60Hz 18 Gps, HDR, EDID, Downscaler, HDCP 2.2

Distribute up to four different HDMI signals on up to four HDMI displays independently of one another with UHD resolutions up to 4K / 60Hz



#### Technical Features

- Supports 4K2K/60Hz (4:4:4)
- Video bandwidth: 18 Gbps
- HDCP 2.2 / 1.4
- HDMI 2.0
- EDID management
- Supports downscaling of 4K contents on Full HD (1080p) displays
- HDR, HDR10, HDR10+, Dolby Vision
- Output of up to 4 HDMI signals on 4 HDMI monitors possible either simultaneously or independently
- Convenient switching between all HDMI connections using remote control or on the device itself

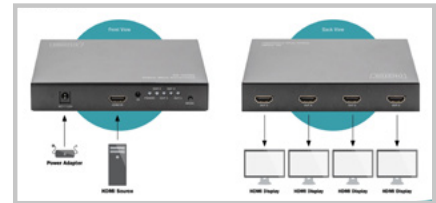
DS-55511 EAN 4016032479314 | 4x4 HDMI Matrix Switch, 4K/60Hz 18 Gps, HDR, EDID, Downscaler, HDCP 2.2



## DIGITUS® 4K HDMI® Video Wall Controller, 2 x 2

**HDMI 2x2 Video Wall Processor Support 4K@60Hz (4:4:4)**

**Combine four interconnected Full HD displays (HDMI®) into a video wall – various display formations possible**



### Technical Features

- Combine up to 4 displays into a video wall of your choice
- Ideal for all kinds of visualizations for display windows, trade fairs or advertising
- Works with any HDMI® Full HD display
- Supports various display formations (horizontal, vertical or combined)
- Supports splitter mode (4 displays with the same content)
- Supports up to 4K / 60 Hz HDMI® input signal (YUV 4:4:4)
- Supports up to 4 x Full HD / 60 Hz (1920 x 1080p) output signals
- Total bandwidth of 18 Gbps for smooth playback in excellent quality
- On Screen Display (OSD) for mode and port display
- High-quality image scaling

**DS-43309** EAN 4016032467595 | HDMI 2x2 Video Wall Processor Support 4K@60Hz (4:4:4)

## USB CABLES: DIVERSE STANDARDS/TYPES AND IN DIFFERENT LENGTHS

### USB Type-C USB Type-C AOC Hybrid FO cable

**USB Type-C - USB Type-C AOC Hybrid FO cable 4K@60Hz USB 3.1 SPEC**

**Transfer of uncompressed video and audio signals in UHD 4K resolution with 21.6 Gbps bandwidth.**



### Technical Features

- The active USB Type C AOC AV Connection Cable is based on a hybrid construction with copper and fiber optic cable, making bandwidths of up to 21.6 Gbit/s.
- The sturdy, flexible cable also stands out thanks to its low bending radius and a very good transfer of uncompressed audio and video signals over long distances.
- The hybrid fiber optic cable offers additional benefits such as a very tight bending radius and low weight. These features do not negatively affect the high image quality or the ease of the Plug & Play installation.
- Thanks to cutting-edge chip technology and immunity to electromagnetic interference, the cable is ideal for home theatres, meeting rooms, conference rooms, and other video wiring setups
- No external power supply required
- Meets the DisplayPort 1.2 specification and is compatible with DP Alternate Mode to USB Type C Standard.
- Compatible with all USB Type C video interface devices

**AK-330160-xxx-S** EAN 4016032482611 | USB Type-C - USB Type-C AOC Hybrid FO cable 4K@60Hz USB 3.1 SPEC

Discover

## OUR STRUCTURED CABLING COMPONENTS



<https://de.assmann.shop/en/Structured-Cabling/>



**DIGITUS® USB 4.0 Type-C connection cable**

**USB 4.0 connection cable, Type - C to Type - C max. resolution 8K@30Hz, PD3.0, 40Gbits/s, back**

**Supports the following transmission types: audio/video data transfer/charging function**



Technical Features

- Supports data transfer rates of up to 40 Gbit/s
- Supports USB Power Delivery Revision 3.0 (PD 3.0) with 20 V, 5A and 100W
- Backwards-compatible with Thunderbolt 3, USB 3.2, USB 3.1 and USB 2.0
- Supports DisplayPort (2.0) video/audio signals and PCI Express
- Video/audio support up to 8K (7680 × 4320 pixels at 30 Hz)
- USB-IF certified

**AK-300343-008-S** EAN 4016032481089 | USB 4.0 connection cable, Type - C to Type - C max. resolution 8K@30Hz, PD3.0, 40Gbits/s, back

**DIGITUS® Lightning to USB-A data/charging cable, MFI-certified**

**USB-A to lightning MFI C89, 0.15M Data and charging cable, white, 5V, 2.4A**

**Ideal data and charging cable - 100% MFI-certified, compatible with all Lightning devices**



Technical Features

- MFI certification - compatible with all Lightning devices (C89 Chipset)
- Supports fast charging for compatible end devices
- Supports a charging current of up to 9 V / 2 A
- Ideal for synchronizing and charging devices with a lightning connection using the computer
- Charge your devices with Lightning connection using any USB charger of your choice
- Suitable for data backup in music editing programs such as iTunes
- Copy your data such as videos, music or images in no time at all
- High tensile strength and long service life
- Perfect second charging cable for the handbag to charge your device with a power bank

**AK-300343-xxx-S** | USB-A to lightning MFI C89, Data and charging cable, white, 5V, 2.4A

**COMPUTERCABLE**

**DIGITUS® SATA connection cable**

**SATA connection cable, L-type, w/ latch F/F, 0.3m, straight, SATA II/III, red**

**With latch for a secure connection**



Technical Features

- Compatible with Serial ATA standards
- 7-wired cable, UL21149
- 2 fixing angles included
- Provides a safe connection between hard disk and mainboard
- AWG: 26
- Color cable: red
- Color connector: black
- Data rate: 6 Gbit/s
- Hoods: molded
- Interlock: Metal latch
- Version: SATA Revision 3
- Wire material: CU
- Shielding: Unshielded

**AK-400102-xxx-R** | SATA connection cable, L-type, w/ latch F/F, 0.3m, straight, SATA II/III, red

## DIGITUS® Datatransfer extension cable, D-Sub9/M - D-Sub9/F

Datatransfer extension cable, D-Sub9 M/F, 3.0m,  
serial, molded, beige

Enables a save and stable connection



### Technical Features

- No inadvertent removing of connector possible
- The additional screw combination in at the entrance as well as at the exit provides by the professional application for maximum security.
- Wire material: CU
- Shielding: single shielding

**AK-610203-xxx-E** | Datatransfer extension cable, D-Sub9 M/F, 3.0m, serial, molded, beige

## AUDIOCABLE

### DIGITUS® Audio Connection Cable, Stereo

Audio connection cable, stereo 3.5mm 1.50m, CCS,  
2x0.10/10, M/M, black



### Technical Features

- Audio connection-cable, stereo

**AK-510100-xxx-S** | Audio connection cable, stereo 3.5mm, CCS, 2x0.10/10, M/M, black

## VIDEOCABLES

### DIGITUS® HDMI® AOC Hybrid Fiber Optic Cable, UHD, 4K, 8K



### Technical Features

- The active HDMI cable with AOC technology is based on a hybrid construction with copper and fiber optic cable, making bandwidths of up to 18 Gbit/s with full HDMI signal spectrum possible
- Thanks to cutting-edge chip technology and immunity to electromagnetic interference, the cable is ideal for home theatres, meeting rooms, conference rooms, and other video wiring setups
- The hybrid fiber optic cable offers additional benefits such as a very tight bending radius and low weight. These features do not negatively affect the high image quality or the ease of the Plug & Play installation.
- The following are just some of the standards that are supported: HDMI 2.0b, HDCP 2.2, HDR, ARC, DTS-HD Master Audio, CED, EDID, 21:8 Cinemascope, Dolby TrueHD, 32 channel audio
- The sturdy, flexible cable also stands out thanks to its high break resistance and a very good transfer of uncompressed audio and video signals over long distances.
- HDMI, DisplayPort, VGA, DVI HDMI, DisplayPort, VGA, DVI

**AK-330125-xxx-S** | HDMI AOC hybrid-fiber connection cable, Type A M/M, UHD 4K@60Hz, gold, black

**AK-330126-xxx-S** | HDMI AOC hybrid-fiber connection cable, Type A M/M, UHD 8K@60Hz, gold, black

**AK-340107-xxx-S** | DisplayPort AOC hybrid-fiber connection cable M/M, UHD 8K@60H, gold, black

## POWER CORD

### DIGITUS® Power Cord connection cable

Power Cord, CEE 7/7 (Typ-F) 90° angled - C13  
M/F, H05VV-F3G 1.0qmm, black

Approved for all European countries



#### Technical Features

- Cable standard: H05 W F3G

AK-440100-xxx-S | Power Cord, CEE 7/7 (Typ-F) 90° angled - C13 M/F, H05VV-F3G 1.0qmm, black

SHARE, PRESENT & COLLABORATE

## WIRELESS SIGNAL DISTRIBUTION

DIGITUS® presentation solutions allow you to transmit screen content wirelessly and are perfect for use in meeting and conference rooms. Discover our different sets for different needs.



<https://de.assmann.shop/en/wireless-signal-distribution/>



In the office



In the conference room



In Co-Working Spaces



At school/university





## TELEPHONE CABLES

### DIGITUS® Flat telephone installation cable

**Modular Flat Cable, 8 Wire Length 100 M, AWG 26, CCA, black**



#### Technical Features

- Modular cable unshielded, AWG26
- Flat cable with 4, 6, or 8 wires (D-shape)
- 100m per reel
- Color: black with color coded wires
- Other lengths per reel, versions, and colors on request
- Assortment: Telecommunication Cable

**AK-460702-xxx-S** | Modular Flat Cable, 8 Wire Length 100 M, AWG 26, CCA, black

## KVM CABLE

### DIGITUS® KVM cable USB for KVM consoles

**KVM Cable Set,VGA,PS/2-Mouse,PS/2-Keyboard, USB black, 3,0 m**

**DIGITUS® original accessorychannels - suitable for height-adjustable tables**



#### Technical Features

- HDDB15/M <=> HDDB15/M, 2 x MiniDIN6/M, 1 x USB/M
- Color: Black
- Connectors color coded: keyboard (violet), mouse (green), USB (black) and monitor (blue)
- Suitable for DIGITUS® TFT consoles with integrated KVM and KVM switches
- Suitable for: DS-720xx and DS-23100-1, DS-23200-1, DS-23300-1

**DS-19232** EAN 4016032329954 | KVM Cable Set,VGA,PS/2-Mouse,PS/2-Keyboard, USB black, 3,0 m

## MONITOR MOUNTS

### DIGITUS® Universal Dual Monitor Stand with clamp mount

**Dual Monitor Desk Clamp Mount, 15-27", black max. load 2x8Kg, VESA max100x100**

**Universal Dual Monitor Stand with clamping assembly for monitors up to 69 cm (27")**



#### Technical Features

- Universally suitable for all LED and LCD monitors up to 27" with a mounting option in accordance with the VESA standard
- Stand for flexible arrangement of your monitors on your desktop
- Individual height adjustment of 15mm for perfect alignment of your monitors

**DA-90349** EAN 4016032382676 | Dual Monitor Desk Clamp Mount, 15-27", black max. load 2x8Kg,VESA max100x100

## DIGITUS® Universal Dual Monitor Mount with Gas Spring and Clamp Mount

**Dual Gas Spring Monitor Clamp Mount 15-32", 2x 9 kg (max.), black**

The dual monitor mount allows you to individually arrange two monitors from 15" - 32". The monitors can be swiveled, inclined and rotated – with integrated gas spring for easy height adjustment and quick release function.



### Technical Features

- Perfectly adjusted ergonomic monitor position for all heights
- For monitors from 15" to 32" (VESA 75 / 100) / up to 9 kg (per monitor)
- The integrated gas spring facilitates height adjustment
- Monitors can be pivoted, inclined, rotated and height adjusted
- Easy installation with clamp fixture on desk

**DA-90395** EAN 4016032465126 | Dual Gas Spring Monitor Clamp Mount 15-32", 2x 9 kg (max.), black

## DIGITUS® Universal Monitor Wall Mount with Gas Spring and Swivel Arm

**Single Gas Spring Monitor Wall Mount 32", 9 kg max., black**

**Full flexibility for your monitor – Tilt, rotate, swivel and compact wall installation**



### Technical Features

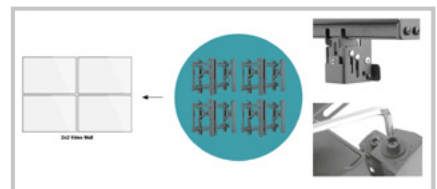
- Perfectly adjusted ergonomic monitor position for all heights
- For monitors up to 32" (VESA 75x75 / 100x100) and 9 kg max. total weight
- Suitable for flat and curved displays
- Integrated cable management: for an organized and tidy working area
- Tilt: -45°/+90°, Swivel: -90°/+90°, Front panel rotation range: 360°
- Swivel arm: offers maximum flexibility of vision
- Gas spring: perfectly balances the weight of your monitor
- Built-in spring compressor for perfect weight adjustment

**DA-90425** EAN 4016032479727 | Single Gas Spring Monitor Wall Mount 32", 9 kg max., black

## DIGITUS® Pop-Out Video Monitor Wall Mount, 45-70"

**Pop-out Video Wall Mount 45-70" screen size, 70 kg max, anti-theft hole**

**Pop-out function: Provides quick access for installation and maintenance and allows precise alignment of your video walls**



### Technical Features

- Pop-out function - Quick access for installation and maintenance
- Supported screen sizes: 45" - 70"
- Maximum load capacity: 70 kg
- Fine adjustment: Depth 20 mm / height 25 mm
- Tilt range: +4° to -2° / Screen level: +3° to -3°
- VESA compatibility: 200x200, 300x200, 300x300, 400x200, 400x300, 400x400, 600x400
- Precise display alignment: Height/depth adjustment
- Quick lock: Locks/unlocks the display
- Pop-out lock system: Ensures safety by preventing the possibility of accidental pop-out
- Anti-theft lock hole: For added security against unintentional removal (additional padlock required)

**DA-90446** EAN 4016032481935 | Pop-out Video Wall Mount 45-70" screen size, 70 kg max, anti-theft hole

## DIGITUS® Universal TV Ceiling Mount with Telescopic Height-Adjustment

**Monitor/TV Ceiling Mount 37-70", 50 kg max, 560-910 mm, black**

**Variable Ceiling Bracket for Flat and Curved Displays up to 70" / 50 kg, Height-Adjustable**



### Technical Features

- Universally suitable for displays from 37" to 70"
- Load capacity: 50 kg
- Suitable for flat and curved displays
- Variable telescopic height adjustment (35 cm)
- Adjustable mounting plinth - also suitable for sloping roofs with up to 60° inclination
- Freely selectable inclination from 0° to -25° for optimal viewing angle
- Cable management: Within the tube structure
- Quick-release monitor bracket (suspension device) - for easy installation
- Integrated level for perfect alignment
- Perfect for offices, conference rooms, restaurants/cafés, schools or hotels

**DA-90421** EAN 4016032475095 | Monitor/TV Ceiling Mount 37-70", 50 kg max, 560-910 mm, black

## DESKS & FRAMES

### DIGITUS® Electrically Height-Adjustable Table Frame, dual motor, 3 levels, gray

**Height Adjustable Standing Desk Frame Dual motor, 3-stages, grey**

**Convert your standard desk into an ergonomic standing/sitting workstation**



### Technical Features

- Maximum load capacity of up to 100 kg
- Flexible frame - Suitable for tabletops 110-200 cm wide and 60-100 cm deep
- Convenient electrical height adjustment (without tabletop): 62-127 cm
- Touchscreen with memory function for 4 different height settings as well as height display
- Two motors for fast and quiet (<50 dB) height adjustment - Lifting speed 35 mm/sec.
- Collision protection function (G sensor) with 3 sensitivity settings - Detection of obstacles during up & down movement
- Auto-Stop System - Stops the motor in case of resistance and automatically retracts the frame slightly
- Child lock / display lock
- Two integrated motors for smooth height adjustment with high load capacity and secure positioning

**DA-90435** EAN 4016032482017 | Height Adjustable Standing Desk Frame Dual motor, 3-stages, grey

### DIGITUS® Electrically Height-Adjustable Table Frame, single motor, 2 levels, gray

**Electric Height Adjustable Desk Frame Single motor, 2-stages, grey**

**Convert your standard desk into an ergonomic standing/sitting workstation**



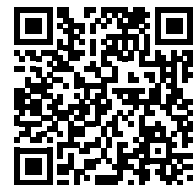
### Technical Features

- Maximum load capacity of up to 70 kg
- Flexible frame - Suitable for tabletops 110-160 cm wide and 50-80 cm deep
- Convenient electrical height adjustment (without tabletop): 71.5 - 121.5 cm
- Up and down control panel
- Motor for easy and quiet (<50 dB) height adjustment - Lifting speed 25 mm/sec.
- Collision protection function (G sensor) - Detection of obstacles during up & down movement
- Auto-Stop System - Stops the motor in case of resistance and automatically retracts the frame slightly
- Maximum dimensions: W 135 x D 50 x H 121.5 cm

**DA-90432** EAN 4016032482024 | Electric Height Adjustable Desk Frame Single motor, 2-stages, grey

## ERGONOMICALLY ARRANGED, OPTIMALLY ORGANIZED **HOLISTIC WORKPLACE DESIGN**

With our holistic product range, workstations can be equipped as a series in offices, or individual workplaces can be arranged for a home office. At DIGITUS® you will find the right accessories to ensure a modern, helpful and above all healthy design for your planned workplace. A well-organized desk is the ideal assistant for effective work.



<https://de.assmann.shop/en/workplace-design/>





## DIGITUS® Electric Height-Adjustable Desk with USB-Charger and Drawer

**Electric height-adjustable Desk, 120x60x12cm top 50kg load, USB-charging ports, white**

**The ergonomic solution for your home office – improves productivity and health in your daily workflow**



### Technical Features

- Smart control pad with LED display
- 4 storage locations for individual height settings
- Height adjustable between 72 and 121 cm
- Dimensions of tabletop: W 120 x D 60 cm
- Integrated USB charging ports: 1 x USB-C™, 2 x USB A
- Integrated keypad lock to prevent accidental activation
- Integrated drawer as convenient storage space
- Integrated impact protection / surge protection

- Easy installation in 3 steps thanks to pre-assembled module
- Maximum load capacity 50 kg

**DA-90406** EAN 4016032474593 | Electric height-adjustable Desk, 120x60x12cm top 50kg load, USB-charging ports, white

## WORKSTATIONS, RISER & TV-WAGEN

### DIGITUS Workstation (monitor, keyboard, mouse) Wall Mount

**Workstation (Monitor, Keyboard, Mouse) Wall Mount 32 inch, 8 kg, VESA 75x75/100x100, white/black**

**Universal mount for installation monitor and keyboard/mouse on the wall with flexible height adjustment**



### Technical Features

- Monitor arm (gas spring) - 45° inclination, 180° swivel range, VESA mount 360° rotation range
- Monitor arm suited for monitors up to 32" and max. weight of 8 kg (VESA 75x75, 100x100)
- Mount for keyboard & mouse (double hinged arm) - Size: W 60 x D 17.8 cm and handle on the front side
- Double hinged arm with a load capacity of max. 8 kg - Swivel range up to 180°
- Individual height adjustment of both arms on the carrier mount (height 73 cm)
- Integrated cable management
- Easy wall installation using three screws
- High-quality aluminum/steel design

**DA-90451** EAN 4016032486398 | Arbeitsplatz (Monitor, Tastatur, Maus) Wandmontage 32 Zoll, 8 kg, VESA 75x75/100x100, weiss/schwarz

## WORKSTATIONS, RISER & TV CARTS

### DIGITUS® Workstation (monitor, keyboard, mouse) Wall Mount

**Workstation (Monitor, Keyboard) Wall Mount 27 inch, 6 kg, VESA 100x100, silver**

**Universal mount with flexible height adjustment for mounting monitors and keyboards to the wall**



### Technical Features

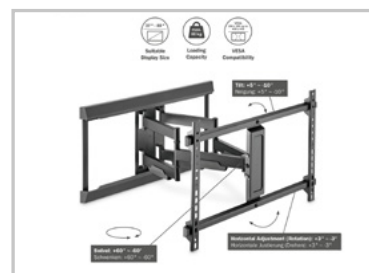
- Universally suitable for all monitors up to 27" with a mounting option in accordance with the VESA standard
- For mounting devices with a screen diagonal of 43 cm (17") to 69 cm (27") to the wall
- Freely swivels up to 180°
- Freely adjustable vertical tilt angle of up to 90°
- Freely adjustable height
- Rotate monitor up to 180°
- Max. load bearing capacity: 6 kg per arm

**DA-90354** EAN 4016032383161 | Workstation (Monitor, Keyboard) Wall Mount 27 inch, 6 kg, VESA 100x100, silver

## DIGITUS Full Motion TV Wall Bracket (37-80")

Full Motion TV Wall Mount 37-80", 60 kg load max.

Full motion (swivel, tilt, shift) for optimal positioning with high load capacity (60 kg max.) and broad compatibility (displays of 37-80" max.)



### Technical Features

- Suitable for displays with VESA bracket from 37-80"
- Maximum load capacity: 60 kg
- Extendible (Depth: 6.3 to 53.6 cm)
- Display swivel +60° to -60°
- Display tilt: +5° to -10°
- Horizontal adjustment (rotation): +3 to -3°
- The arms can be moved individually to the side on the permanently mounted wall carrier plate and locked in the desired position
- Integrated cable management
- VESA compatibility: 200x100, 200x200, 300x200, 400x200, 300x300, 400x300, 400x400, 600x400

DA-90454 EAN 4016032489191 | Full Motion TV Wall Mount 37-80", 60 kg load max.

## DIGITUS TV Cart, 70-120" 140 kg max., black

TV Präsentationswagen, 70-120" 140 kg max., schwarz

The collaboration trolley / presentation trolley offers the option for flexible positioning of a display (70-120", 140 kg max.)



### Technical Features

- Mount for displays from 70-120" with max. load capacity of 140 kg
- Display mount height adjustment: min. 125 cm - max. 160 cm
- Display mount tilt angle: +5° to -10°
- Height-adjustable camera mount with max. load of 5 kg
- Height-adjustable shelf for notebook, player, etc. max. load of 10 kg
- Practical handles on the back for quick and easy movement/positioning
- Heavy duty casters with locking mechanism
- Integrated cable management
- Ultra-strong and lightweight design made of aluminum, steel and plastic

DA-90452 EAN 4016032487364 | TV Präsentationswagen, 70-120" 140 kg max., schwarz

## DIGITUS® Ergonomic Workspace Riser

Height Adjustable Sit-Stand desktop 95x61x10-50cm, Lower Keyboard and mouse deck

Height adjustable stand/sit desktop extension



### Technical Features

- Create your personal ergonomic workspace at low cost
- You are able to raise your workspace between 10 to 50cm
- Lower deck for mouse and keyboard

DA-90380-1 EAN 4016032433279 | Height Adjustable Sit-Stand desktop 95x61x10-50cm, Lower Keyboard and mouse deck

## DIGITUS® TV Presentation cart

**TV-Cart for screens up to 70", max. 50kg wheelbase, VESA max. 600x400**

**For flexible presentations in a meetingroom or education use**



### Technical Features

- Mount a TV between 37" up to 70"
- With lower shelf for DVD Player or Laptops
- With upper shelf for Webcams
- With weehlbase for flexible positioning

**DA-90370** EAN 4016032428589 | TV-Cart for screens up to 70", max. 50kg wheelbase, VESA max. 600x400

## ACCESSORIES & CABLE MANAGEMENT

### DIGITUS® Desktop Organizer with Qi Charger

**Desk organizer with storage drawer + Qi Charger white/grey**

**Convenient Desktop Organizer with Qi charger for charging mobile devices**



### Technical Features

- Organizer for filing folders, documents, books, etc.
- Drawer for storing writing utensils, etc. with individual dividers
- Qi charger (5, 7, 10 W) for charging mobile devices, such as smartphones
- Felt storage areas
- Sturdy, protective stand feet made of felt
- Practical carrying handles
- Qi-certified induction charger
- Dimensions: L 22 x W 40 x H 29 cm
- Weight: 4.2 kg
- Color: White/gray

**DA-90442** EAN 4016032481904 | Desk organizer with storage drawer + Qi Charger white/ grey

### DIGITUS® LED Monitor Light with Clamp Mount

**LED Monitor Bar Light 5W, 250lm, clamp, black**

**LED Light with Dimmer, Different Color Temperatures, Touch Control and Clamp Mount**



### Technical Features

- Configurable color temperature in 5 levels, from cold to warm (3000-6500K)
- Dimmer with 5 brightness levels – conveniently adjustable using touch control
- Touch control: Easy adjustment of light settings by touch
- Memory feature for last brightness setting
- Elegant aluminum housing

**DA-90415** EAN 4016032475033 | LED Monitor Bar Light 5W, 250lm, clamp, black

## DIGITUS® Ergonomic Stool / Standing Aid, Height-Adjustable with Gas Pressure Spring

**Standing Stool, height-adjustable, black**

**Height adjustable stand/sit desktop extension**



### Technical Features

- Stay fit and mobile even while seated!
- Frameless foam cushion for pleasant seating comfort
- The sturdy base of the chair offers a stable yet flexible sitting/standing experience
- Height adjustment of 63 - 88 cm possible
- Easy height adjustment with gas pressure spring
- Reduces the strain on your legs after long periods of standing
- Seat can be rotated by 360°
- Can be inclined by 30° for dynamic movements
- Maximum load capacity: 125 kg
- Put together in just a few minutes without tools!

**DA-90422** EAN 4016032475279 | Standing Stool, height-adjustable, black

## DIGITUS® Universal PC Mount for Desk Mounting with Easy-Locking

**PC Table Mount, 10kg max H: 300-510, D: 88-203mm black**

**Flexible metal holder for PC housings of all kinds – continuously adjustable without tools**



### Technical Features

- Easy locking – Secure height adjustment without tools
- Continuously adjustable height and width
- Perfectly adapts to different PC housing sizes
- Can be swiveled by 360° – Easy access to connections on the rear side
- Under-desktop installation: Saves space and facilitates workstation cleaning
- Compatible with many common PC housings
- Sturdy steel construction for excellent durability
- Ideal for home and office

**DA-90411** EAN 4016032474975 | PC Table Mount, 10kg max H: 300-510, D: 88-203mm black

## DIGITUS® Flexible Cable Routing with Adjustable Length

**Flexible Cable Routing, Color: silver Length: 1.3 m**

**Individually adjustable length with 4 cable channels - suitable for height-adjustable tables**



### Technical Features

- The cable snake is the perfect supplement for hiding cables that lead from the floor to the tabletop of height-adjustable and free-standing desks
- The cable tube is made up of 28 modular links that can be individually removed from the cable channel for individual length adjustment - max. 130 cm between the floor and tabletop
- A plastic foot with metal weight fixes the cable routing to the floor, so that the angular cable snake lays down neatly and tidily without tangling up or causing a mess of cables.
- For optimal cable organization the cable spiral is divided into 4 separate chambers through which electricity cables, monitor connection cables or audio cables can be guided
- The robust and flexible cable routing lets you organize your workstation, whether in the office or in your home office

**DA-90506** EAN 4016032463511 | Flexible Cable Routing, Color: silver Length: 1.3 m



## DIGITUS® Cable Management Box Set, white

Cable Management Box Set, white Size: S, M, L

Cable boxes for orderly storage of sockets, cables and power adapters



### Technical Features

- Perfect protection from dust and liquids
- Hide plugs, power strips and power adapters in this practical organizer
- Large cable openings on both sides of the box
- Robust plastic box
- Protect your children and pets
- Stylish, timeless design
- Included anti-slip pads

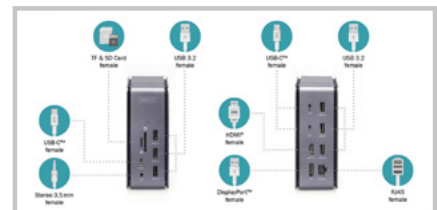
DA-90509 EAN 4016032477051 | Cable Management Box Set, white Size: S, M, L

## COMPUTER PERIPHERIE

### DIGITUS® USB4 Docking Station 8K, USB Type-C™

USB 4.0 Docking Station 14 in 1 2x Video 8K/30Hz, 3x USB 10GHz

The USB4 Docking Station offers 14 additional ports including video, data, power, Ethernet & audio.



### Technical Features

- Supports 2 monitors with a resolution up to 8K/30Hz, i.e. up to 7680 x 4320p
- 1 x DP + 1 x HDMI video interfaces to connect up to 2 monitors simultaneously (dual display support).
- Dual display support with Windows OS - Monitor mirroring & extension
- Single display support with macOS - Monitor mirroring
- 1 x USB-C™ port - 10 Gbps data transfer, 1 x USB-C™ port with Power Delivery (PD)
- 3 x USB 3.2 ports - 10 Gbps SuperSpeed data transfer, all ports with BC 1.2 functionality for charging mobile devices (7.5 W max.)
- 3 x USB 2.0 ports
- Supports Power Delivery 3.0 (100 W max.) to quickly charge your notebook
- 1 x Gigabit LAN 10/100/1000 Mbps RJ45 jack
- 1 x SD slot & 1 Micro SD slot: Supports SD 3.0 (UHS-I), SD 4.0 (UHS-II)

DA-70897 EAN 4016032483458 | USB 4.0 Docking Station 14 in 1 2x Video 8K/30Hz, 3x USB 10GHz

### DIGITUS® Thunderbolt™ 3 Docking Station 8K, USB Type-C™

Universal Docking Station, USB 3.0, 7-Port, Travel 2x Video, 3x USB 3.0, 1x USB-C™, RJ45, Audio

The Thunderbolt 3 Docking Station offers 10 additional interfaces for video, data, power, Ethernet & audio.



### Technical Features

- 10 additional interfaces for your notebook for video, data, power, Ethernet & audio.
- Supports 4K Ultra HD (4096 x 2160 30-bit color @60 Hz) on two monitors or 8K @ 30Hz on one monitor via Thunderbolt 3
- Supports 4K @ 30Hz on dual monitors for devices with DisplayPort 1.4 (HBR3) and 1080p @ 60Hz on dual monitors for devices with DisplayPort 1.2 (HBR2) via USB-C™ devices
- Dual display support with Windows OS - Monitor mirroring & extension
- Single display support with MAC OS - Monitor mirroring
- 3x USB 3.0 connections - 2x with up to 10 Gbps SuperSpeed data transfer, one of the ports with BC 1.2 functionality for charging mobile devices
- (1.5 A max.), 1x with up to 5 Gbps SuperSpeed data transfer
- 1 x Thunderbolt connection with Power Delivery (PD), data transfer with up to 40 Gbps
- Supports Power Delivery 3.0 (60 W max.) to quickly charge your notebook
- 1 x Gigabit LAN 10/100/1000 Mbps RJ45 jack
- 1x SD & 1 Micro SD slot: Supports SD 3.0, SD 4.0

DA-70895 EAN 4016032480921 | Universal Docking Station, USB 3.0, 7-Port, Travel 2x Video, 3x USB 3.0, 1x USB-C™, RJ45, Audio

**DIGITUS® USB 3.0 Office Hub, 4 / 7-Port**

**USB 3.0 Hub, 7-port Incl. 5V/3,5A power supply, Aluminium housing**

**Adds seven additional SuperSpeed ports to your workspace**



Technical Features

- Provides your workspace with up to seven additional USB ports
- Fastest data transfer rates with SuperSpeed USB 3.0
- High Quality aluminium housing
- Does not require additional installation – Plug & Play

**DA-70241-1** EAN 4016032447474 | USB 3.0 Hub, 7-port Incl. 5V/3,5A power supply, Aluminium housing

**DA-70240-1** EAN 4016032444244 | USB 3.0 Hub, 4-port Incl. 5V/2A power supply, Aluminium housing

**DIGITUS® USB-C™ Card Reader, 2 Port, High Speed**

**USB-C™ Card Reader, 2 Port UHS-II SD4.0, TF4.0, 300Mb/s**

**The fastest and easiest way to transfer photos from your digital camera to the computer**



Technical Features

- Copy photo albums and files to and from an SD memory card at speeds of up to 300 MB/s.
- Supports the following memory card types: SDXC, SDHC, SD, MMC, RS-MMC, Micro SDXC, Micro SD, Micro SDHC, UHS-II and UHS-I cards

**DA-70333** EAN 4016032485612 | USB-C™ Card Reader, 2 Port UHS-II SD4.0, TF4.0, 300Mb/s

**DIGITUS® Card Reader All-in-one, USB 3.0**

**USB 3.0 Card Reader with 1m USB A connection cable Support MS/SD/SDHC/MiniSD/M2/CF/MD/SDXC cards**

**The fastest and easiest way to transfer digital images to your computer**



Technical Features

- The fastest and easiest way to transfer digital images to your computer
- Supports data transfer rate up to 5 Gbps (Super-speed)
- Supports the following memory card types: CF, SD/SDHC/MMC/MMC4.0/RS-MMC/MMC PLUS/MMC Mobile/MMC Micro, MS/MS Pro/MS Pro Duo, XD, Micro SD (T-Flash), M2

**DA-70330-1** EAN 4016032431497 | USB 3.0 Card Reader with 1m USB A connection cable Support MS/SD/SDHC/MiniSD/M2/CF/MD/SDXC cards

## DIGITUS® USB 2.0 serial adapter

**USB 2.0 to serial Converter, DSUB 9M incl. USB A Cable 80cm, FTDI chipset**

**Provides a serial RS232 interface via USB 2.0**



### Technical Features

- Enables data exchange between PCs and serial peripheral devices (machine control systems, modems, sensors, etc.) via the USB port.
- Meets the USB 2.0 standard
- Incl. 80 cm USB extension cable
- FTDI chipset for individual configuration

**DA-70156** EAN 4016032271611 | USB 2.0 to serial Converter, DSUB 9M incl. USB A Cable 80cm, FTDI chipset

**DA-70155-1** 4016032326144 | USB to Serial Adapter, RS232 USB1.1, RS232 chipset PL2303RA

**DA-70159** EAN 4016032308539 | USB to Serial Adapter, RS232 4 x RS232, cable type, Chipset: FT4232H, 1.5m

## DIGITUS® USB 2.0 Active Extension Cable

**Active USB 2.0 Repeater/Extension Cable, 10 m A/M to A/F, black**

**Use USB devices that are far away with this active USB 2.0 extension cable with signal amplifier**



### Technical Features

- Bridges reliably the distance to your USB devices
- No power loss despite of 10 meters cable length
- Flexible and quick data transfer via USB
- Easy installation - Plug & Play

**DA-73100-1** EAN 4016032326212 | Active USB 2.0 Repeater/Extension Cable, 10 m A/M to A/F, black

**DA-73130-4** EAN 4016032326212 | USB 2.0 Repeater Cable USB A male / A female, length 25 m

**DA-73103** EAN 4016032306474 | USB 2.0 Repeater cable USB A male / A female, length 5 m

**DA-73107** EAN 4016032457503 | USB 3.0 Active Extension Cable length: 20m

## DIGITUS® Mini enclosure for M.2 NVMe PCIe SSD, USB 3.1 Type-C™

**USB Type-C 3.1 External SSD Enclosure M.2 (NVMe) tool-free, alu housing, M-Key or B+M-Key**

**The external Mini SSD enclosure accommodates an M.2 NVMe PCIe SSD, and USB 3.1 Type-C™ provides data transfer rates of up to 10 Gbps.**



### Technical Features

- Supports Mini SSD in M.2 NVMe PCIe format
- USB 3.1 (Gen. 2) - data transfer rate up to 10 Gbps
- No power adaptor required - power is supplied via USB-C™
- Supported capacity: up to 8 TB
- Includes USB-C™ combo cable with USB-A adapter
- Supports plug-and-play
- Stylish aluminium enclosure

**DA-71120** EAN 4016032461432 | USB Type-C 3.1 External SSD Enclosure M.2 (NVMe) tool-free, alu housing, M-Key or B+M-Key

**DA-71105-1** EAN 4016032480754 | USB3.0 2.5" SATA SSD/HDD enclosure with aluminium housing

**DA-71104** EAN 4016032391838 | SSD/HDD SATA Enclosure 2.5" USB2.0, for SATA II HDD 2.5", Alu, w/o PSU

COMPUTER COMPONENTS

**DIGITUS® USB-C™ - HDMI Graphics Adapter Cable, UHD 8K / 60 Hz**

USB-C™ - HDMI Adapter, 20 cm 8K/60Hz, silver, aluminum housing

Transmits video and audio signals from a USB-C™ interface to an HDMI display in resolutions of up to 8K / 60 Hz



Technical Features

- Universal USB-C™ Graphics Adapter with HDMI Output
- Full 8K resolution at 60 Hz
- With integrated audio transmission for a Dolby Surround sound experience
- Supports HDR10
- Supports 3D displays
- High-quality aluminum housing
- Power supply is provided via the USB-C™ interface
- Plug and Play - no driver installation required
- Resolutions of up to 4K Ultra HD

**DA-70822** EAN 4016032478652 | USB-C™ - HDMI Adapter, 20 cm 8K/60Hz, silver, aluminum housing

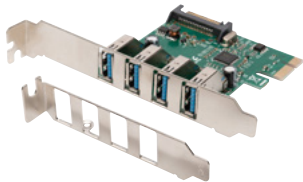
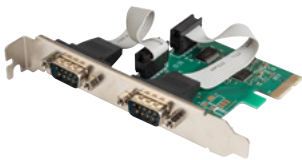
**DA-70824** EAN 4016032478720 | USB-C™ - DP Adapter, 20 cm 8K/30Hz, silver, aluminum housing

**DA-70826** EAN 4016032478751 | USB-C™ - DP + HDMI Adapter, 20 cm 4K/30Hz, silver, aluminum housing

**DIGITUS® 2-Port Serial Interface Card, PCIe**

Serial I/O RS232 PCIe Express Add-On card 2-port, incl. low profile, chipset:ASIX99100

Perfect for connecting serial modems, PDAs, digital cameras, printers, ISDN terminal adapters and many more



Technical Features

- Data transfer rate up to 128.000 bps
- Compliant with PCI Express base specification 2.0
- 2 x DSUB 9, serial ports, male, UART 16C950

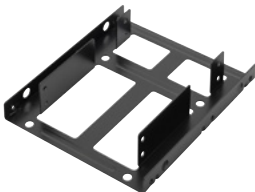
**DS-30000-1** EAN 4016032309390 | Serial I/O RS232 PCIe Express Add-On card 2-port, incl. low profile, chipset:ASIX99100

**DS-30221-1** EAN 4016032448082 | USB 3.0, 4 Port, PCI Express Add-On card 4 Ports A/F External, VL805 chipset

**DIGITUS® Dual 2.5" HDD/SSD Internal Mounting Kit incl. cable set**

Mounting KIT: Dual SSD/HDD 2.5 -> 3.5 BAY Incl. Mounting Frame, Metal Black, Screws, Cables

Extend your computer with additional storage space and fast access times



Technical Features

- Easy installation with supplied mounting accessories and cables
- Installation unit for two 2.5" hard drives in a 3.5" bay

**DA-70434** EAN 4016032454434 | Mounting KIT: Dual SSD/HDD 2.5 -> 3.5 BAY Incl. Mounting Frame, Metal Black, Screws, Cables



## MOBILITY PRODUCTS

### DIGITUS® USB-C™ Mini Charging Adapter, 20W

**USB-C™ Mini Charging Adapter, 20W 20W, PD 3.0, white**

**Mini-USB charger with an output of up to 20W for USB-C™ devices of all kinds with numerous safety features**



#### Technical Features

- Compact charger for USB-C™ devices such as smartphones or tablets
- Supports charging power of up to 20W - compatible with Power Delivery (PD 3.0)
- Integrated surge protection / excess current protection / short circuit protection
- Integrated overheating protection with auto-recovery for the highest degree of security
- LED charging display
- Ideal for use on the go thanks to compact dimensions
- Housing made of fire-resistant material

**DA-10060** EAN 4016032482703 | USB-C™ Mini Charging Adapter, 20W 20W, PD 3.0, white

**DA-10061** EAN 4016032482673 | USB Charger 2x USB-A 15W, 2x 2,4A, white

**DA-10062** EAN 4016032482710 | USB Charger 1x USB-A / 1x USB-C™ 30W Dual Port, 1x 2,4A, 1x 3A, QC3.0

### DIGITUS® 3 in 1 Charging Station, foldable, wireless

**3 in 1 Charging station, wireless for Apple iWatch, AirPods, iPhone**

**Simultaneous charging of iPhone®, iWatch®, AirPods® with MagSafe® function**



#### Technical Features

- The station has an integral iWatch charger, the original charging pad is not required
- The smartphone is charged horizontally and vertically, allowing simultaneous charging and video watching
- Inductive charging technology for wireless charging of compatible smartphones
- Compatible with all Qi-capable smartphones as well as Qi-capable AirPods®/AirPods Pro® and Galaxy Buds
- This folding station is easy to transport and can thus be used at home, in the office or for travel
- A power adapter is not included in the scope of delivery, we recommend using a QC3.0 adapter
- The pad can charge without a problem through protective covers up to 5mm thick. Metal accessories and credit cards can restrict the charging process.
- If the phone cover is more than 6mm thick, it must be removed, otherwise the phone cannot be charged

**DA-10084** EAN 4016032482789 | 3 in 1 Charging station, wireless for Apple iWatch, AirPods, iPhone

### DIGITUS® Charging station with 6 charging spots, 58W

**USB Charging station with 6 Port With PD 3.0 and Qi Wireless Charging Pad**

**Simultaneous charging of up to 6 devices in compact desktop organizer**



#### Technical Features

- No additional charging adapters are required and only one socket is occupied
- The charging station comes with 5 short charging cables, all tidy and organized
- 2 cables for Apple devices, 1 cable for Android devices, 2 cables for USB-C™-capable devices
- Intelligent distribution of charging power depending on the connected devices
- Inductive charging technology for wireless charging of compatible smartphones
- Compatible with all Qi-capable smartphones as well as Qi-capable AirPods®/AirPods Pro®
- Intelligent and safe charging: Overcharging, excess voltage and short circuit protection
- The wireless charging surface can charge without a problem through protective covers up to 5mm thick. Metal accessories and credit cards can restrict the charging process.
- If the phone cover is more than 6mm thick, it must be removed, otherwise the phone cannot be charged

**DA-10083** EAN 4016032482697 | USB Charging station with 6 Port With PD 3.0 and Qi Wireless Charging Pad

## DIGITUS® Notebook charger USB-C™, 65W

**Notebook Charger USB-C™ Power supply 65W PD3.0**

**Compact replacement for defective or lost original power adapters and perfectly suited for use as a second power adapter for travel, in the office or at home.**



### Technical Features

- Suitable for notebooks that are charged via USB-C™ such as Lenovo Think Pad, Huawei, HP Spectre, Asus, Acer, Dell, Xiaomi, etc.
- Suitable for smartphones and tablets that are charged via USB-C™ such as Samsung Galaxy, LG, HTC, Google etc.
- Protection against short circuits, overheating, surges and excess current

**DA-10071** EAN 4016032482680 | Notebook Charger USB-C™ Power supply 65W PD3.0

**DA-10180** EAN 4016032486978 | 4-Port USB-Charger, 65W GaN 65W, 2x USB-C, 2x USB-A, PD3.0

**DA-10181** EAN 4016032486985 | 4-Port USB-Charger, 150W GaN 150W, 2x USB-C, 2x USB-A, PD3.0

## INPUT DEVICES

### DIGITUS® 2D Barcode Hand Scanner, Battery-Operated, Bluetooth & QR-Code Compatible

**Bluetooth® Barcode Scanner 200 scan/sec, with holder**

**High-resolution hand scanner for reliable use in retail and logistics – compatible with Bluetooth® and suitable for QR codes**



### Technical Features

- Precise scanning of 1D & 2D barcodes (barcodes / QR codes)
- Supports wireless connection via Bluetooth or cabled via USB
- Anti-inference: External light sources have no influence on the scan
- Reads barcodes on screens – ideal for payment via smartphone/QR code
- Automatic mode enables highly efficient operation
- 200 scans per minute, bidirectional for reliable detection
- High resolution: Scans high-resolution barcodes
- Dust-protected and water-resistant (IP54)
- Silicon cover absorbs impacts and protects against damage
- Ideal for retail, logistics, and commerce of all kinds

**DA-81001** EAN 4016032473633 | 1D Barcode Scanner, bi-directional 200 scans/sec, 2 m USB-RJ45 Cable

**DA-81002** EAN 4016032473640 | 2D Barcode Scanner, bi-directional 200 scans/sec, 2 m USB-RJ45 Cable, with holder

**DA-81003** EAN 4016032473657 | 2D Bluetooth® Barcode Scanner 200 scan/sec, with holder

## DIGITUS® Label Printer 300dpi

**Bar Code Label Printer, 300dpi Thermal Direct/Transfer, USB, LAN, Serial**

**The label printer is versatile and ideal for creating shipping labels and barcode labels in the office and at home**



### Technical Features

- The printer supports the following labels: Continuous, gap, black mark, zigzag fold and hole punch in widths of 25.4 -118 mm
- High speed printing at 4 inches (101 mm/s)
- Adjustable print width between 1-4.25" (25.4-118mm)
- 300 meters (984") of ribbon on a 25.4mm (1") core (coated side out)

**DA-81020** EAN 4016032487029 | Bar Code Label Printer, 200dpi Thermal Direct/Transfer, USB, LAN, Serial

## DIGITUS® Wireless Optical Mouse, 6 buttons, 1600 dpi

**Wireless Optical Mouse 6D, 2.4 GHz 800/1000/1600 dpi, black-grey**

**Comfortable and reliable control for your workplace**



### Technical Features

- The 6 function keys promote productive work
- Plug & Play - Immediately ready for use after connection
- Adjustable DPI (1600/1200/800) allows high precision for text or spreadsheet work as well as navigating the Internet
- Wireless 2.4 GHz radio technology
- Working range of up to 10 m
- Thanks to the integrated compartment, the Nano Receiver can easily be stowed away

**DA-20162** EAN 4016032482871 | Wireless Optical Mouse 6D, 2.4 GHz 800/1000/1600 dpi, black-grey

**DA-20161** EAN 4016032482864 | Wireless Optical Mouse 3D, 2.4 GHz 1000 dpi, black

**DA-20163** EAN 4016032482888 | Wireless Ergonomic Optical Mouse 6D, 2.4 GHz 800/1000/1600 dpi, black-grey

## DIGITUS® Ergonomic Keyboard, Wireless, 2.4 GHz

**Ergonomic keyboard, wireless German layout, black**

**Ergonomic split-key design with palm rest supports the wrists and natural hand posture.**



### Technical Features

- Prevents one-sided strain on hands and joints (RSI)
- Wireless 2.4 GHz technology with nano USB receiver
- 18 multimedia keys for quick access to common software and functions
- Range of up to 10 m, ideal for conference rooms and presentations
- Use the 10-finger system to work without fatigue and pain

**DA-20157** EAN 4016032463900 | Ergonomic keyboard, wireless German layout, black

## DIGITUS® Ergonomic mousepad with palm rest

**GEL MOUSEPAD, black**

**Ergonomically shaped mousepad with palm rest supports the wrist and natural hand posture**



### Technical Features

- Relaxed and comfortable work thanks to optimal support of the wrist
- Soft palm rest with gel filling prevents misalignments and protects the arms and joints
- Flexible mousepad made of soft material prevents tension
- Slip-proof underside keeps the mousepad firmly in place at the desired position

**DA-51020** EAN 4016032474838 | GEL MOUSEPAD, black

## MULTIMEDIA

### DIGITUS® LED Ring Light 10 inch, expandable table stand

#### LED Ring Light 10 Zoll, Desk

**10-inch LED Ring Light with tripod stand & smartphone mount, dimmable light in various color tones for YouTube video recordings, live stream, makeup/photography.**



#### Technical Features

- The ring light is perfectly suited for influencers, bloggers or vloggers who record photos or videos using a smartphone for social media.
- Control of color temperature in 3 levels (3200/4500/6500 K) using the cable remote control for optimal and uniform illumination e.g. of videos and portraits
- Light intensity adjustable in 10 levels, from radiant white to pleasantly muted
- Charming eye effect
- Smartphone holder with ball head and flexible gooseneck, can be rotated for portrait and landscape format
- Suitable for most smartphones, width adjustable from 6.0 to 8.2 cm
- The rubber inserts on the clamp spring mount protect the smartphone housing from scratches
- USB-A cable (length 200 cm) for mobile use

DA-20310 EAN 4016032485759 | LED Ring Light 10 Zoll, Desk

DA-20311 EAN 4016032485742 | LED Ring Light 10 Zoll, Stand

### DIGITUS® USB Condenser Microphone, Studio

#### USB Microphone, Studio, Desk

**USB Condenser Microphone with 1.5 m USB cable. Ideal for online meetings, podcasts, studios and live streaming**



#### Technical Features

- Plug & Play USB Recording Microphone with 1.5 m USB cable, microphone stand and additional accessories
- Supports directional recording with cardioid characteristics
- With professional sound chipset, the USB microphone offers a high-resolution sampling rate of 192kHz / 24Bit
- Metal tripod with 3/8 inch thread, 10.5 cm base diameter and a height of 27.5 cm for optimal speech and sound recording.

DA-20300 EAN 4016032485797 | USB Microphone, Studio, Desk

DA-20301 EAN 4016032485780 | USB Microphone, Studio, Arm

### DIGITUS® Full HD Webcam 1080p with Autofocus, Wide Angle

#### Full HD 1080p Webcam Auto focus, Wide view angle

**Full HD webcam with 1080p resolution featuring auto focus and wide angle – ideal for home and office**



#### Technical Features

- High-resolution Full HD CMOS image sensor with 1080p resolution
- Auto focus from 7cm to unlimited, automatic focus adjustment
- Wide angle of 90°
- Integrated stereo microphone for video conferences/video calls
- Auto white balance (AWB) and wide dynamic range (WDR) for optimal image quality
- Highly flexible – Camera can be rotated 360° and inclined vertically
- Clamp mount with rubber for stable support
- Tripod mounting possible using integrated 1/4" screw thread (optional)

DA-71901 EAN 4016032467588 | Full HD 1080p Webcam Auto focus, Wide view angle



## DIGITUS® On Ear Bluetooth Headset with Docking Station

**Bluetooth Office Headset, On Ear, volume control, incl. docking station**

**Bluetooth On-Ear Headphones with Multipoint Connection and up to 17 hours call time**



### Technical Features

- Multipoint connection: Simultaneous connection with 2 devices possible, easy switching
- Perfect for simultaneous use of private and business phones
- Bluetooth 5.0 for stable transmission and faster connection
- Compatible with iOS and Android smartphones
- Ideal for smartphones, tablets, phone conferences, VoIP, etc.
- Microphone can be rotated by 270° for use on the right or left side
- Soft pad for pleasant wearing comfort
- Flexible headband, removable
- Up to 17 hours call time possible
- Ideal for home and office

**DA-12211** EAN 4016032474883 | Bluetooth Office Headset, On Ear, volume control, incl. docking station

## DIGITUS 4-way office socket strip with 2x USB ports

**4-way Office Power Strip with 2x USB On/Off Switch, Alu-housing, USB out: 5V/2A, bi/si**

**4-way socket strip with two additional USB charging connectors for mobile devices in a high quality aluminum casing**



### Technical Features

- 4x safety sockets in a 45° layout, also suitable for right angle plugs
- 2x USB ports for charging mobile devices (5 V / 2 A)
- 2x universal clamp mountings for different table thicknesses
- Illuminated safety switch for switching on and off
- Protection against accidental contact: Plastic covers close the contacts on the socket

**DA-70614** EAN 4016032443216 | 4-way Office Power Strip with 2x USB On/Off Switch, Alu-housing, USB out: 5V/2A, bi/si

**DA-70624** EAN 4016032487012 | 6-way Office power strip 3x USB 2xUSB-A +1xUSB A, On/off switch, Alu-housing

## AUDIO & VIDEO SOLUTIONS FOR DIGITAL MEETINGS

TRANSMITTING VIDEO AND AUDIO SIGNALS EFFECTIVELY

**Learn more:**



<https://de.assmann.shop/en/workplace-design/>



ednet Laminator, A4

Laminator, A4, 80-125 Mic Heating: Mica Plate, white

Protect or enhance the appearance of your photos, documents, business cards, identity cards etc. with a size of up to DIN A4



Technical Features

- Protect or enhance the appearance of your photos, documents, business cards, identity cards etc. with a size of up to DIN A4
- ABS (anti-blocking system) / jam release button
- Compact, modern design
- Suitable for laminating sizes: DIN A4, DIN A5, DIN A6, business cards
- GS certified

91610 EAN 4054007916105 | Laminator, A4, 80-125 Mic Heating: Mica Plate, white

ednet Surface Cleaner, 100 Tissues

Office Cleaning Wipes 100 sheets, Anti-static Screens and Plastic surfaces, Biodegradable

Removes smudges, dirt, dust and fingerprints without scratching or leaving any residue behind



Technical Features

- Removes dust and dirt and provides streak free cleaning, rapid self-drying
- The liquid contains no alcohol (not flammable) and is free of Methanol
- Contains Non-ionic surfactant <5%
- Made in EU

63001 EAN 4054007630018 | Office Cleaning Wipes 100 sheets, Anti-static Screens and Plastic surfaces, Biodegradable

63004 EAN 4054007630049 | POWER CLEANER Can with 400ml

63005 EAN 4054007630056 | Screen Cleaner, 250ml pump spray bottle

63022 EAN 4054007630223 | TFT CLEANING TISSUES, 100 Pcs for TFT screens



CUSTOMIZED  
WORKSTATIONS  
FOR YOUR NEEDS

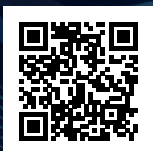
ERGONOMICS IN ITS DIVERSITY -  
THE RIGHT SOLUTION FOR EVERY AREA

Learn more:



de.assmann.shop/en/ergonomics-solution/

## DIGITUS® BUILDING TECHNOLOGY



<https://de.assmann.shop/en/E-Mobility/>



### PORTABLE CHARGER

#### DIGITUS® EV charger for household socket



#### Technical Features

- 1-Phase / 230 V
- 8 A / 10 A / 12 A / 16 A (adjustable current)
- Adjustable charging power: 1,8; 2,3 ; 2,8; 3,7 kW
- Type F 7/4 to EV Type 2
- LCD display
- 5 m / IP55 (water-jet protected)

**DK-1P16-A-050** EAN 4016032481560 | EV charger, 5m, 230 V, Type F 7/4 to EV Type 2 Adjustable charging power:1,8; 2,3 ; 2,8; 3,7 kW

### WALL-BOX

#### DIGITUS® Wall Box 3-phase 11kW with 5 m Type2 charging cable



#### Technical Features

- 1-Phase / 3-Phase
- 16A / 11 kW
- Compatible with electric vehicles (EV) and plug-in hybrids (PHEV)
- Rated voltage: 230 V / 400 V / AC / +/- 15%
- Safety protection: integrated
- with 5 m charging cable
- IP55 (water-jet protected)

**DN-3P16-050** EAN 4016032482376 | Wall-Box 3-Phase 11kW with 5m standard Charger cable

CHARGING CABLES

DIGITUS® EV charging cable,  
type 2 to type 2



Technical Features

- 1-Phase / 3-Phase
- 16 A / 32 A
- 7,4 kW / 11 kW / 22 kW
- Rated voltage: 230 V / 400 V / AC / +/- 15%
- IP55 / TPU jacket
- Straight Cable

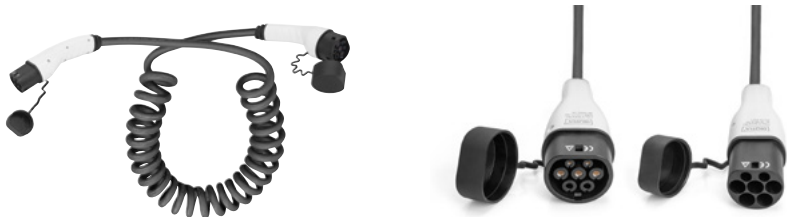
DK-1P32-XXX | EV charging - Single Phase, 230 V, 32 A, Type 2 to Type 2 Standard Charger cable

DK-3P16-XXX | EV charging - Three Phase, 400 V, 16 A, Type 2 to Type 2 Standard Charger cable

DK-3P32-XXX | EV charging - Three Phase, 400 V, 32 A, Type 2 to Type 2 Standard Charger cable

SPIRAL CHARGING CABLES

DIGITUS® Spiral EV charging cable,  
type 2 to type 2



Technical Features

- 1-Phase / 3-Phase
- 16 A / 32 A
- 7,4 kW / 11 kW / 22 kW
- Rated voltage: 230 V / 400 V / AC / +/- 15%
- IP55 / TPU jacket
- Spiral Cable

DK-1P32-S-XXX | EV charging - Single Phase, 230 V, 32 A, Type 2 to Type 2 Spiral charger cable

DK-3P16-S-XXX | EV charging - Three Phase, 400 V, 16 A, Type 2 to Type 2 Spiral charger cable

DK-3P32-S-XXX | EV charging - Three Phase, 400 V, 32 A, Type 2 to Type 2 Spiral charger cable





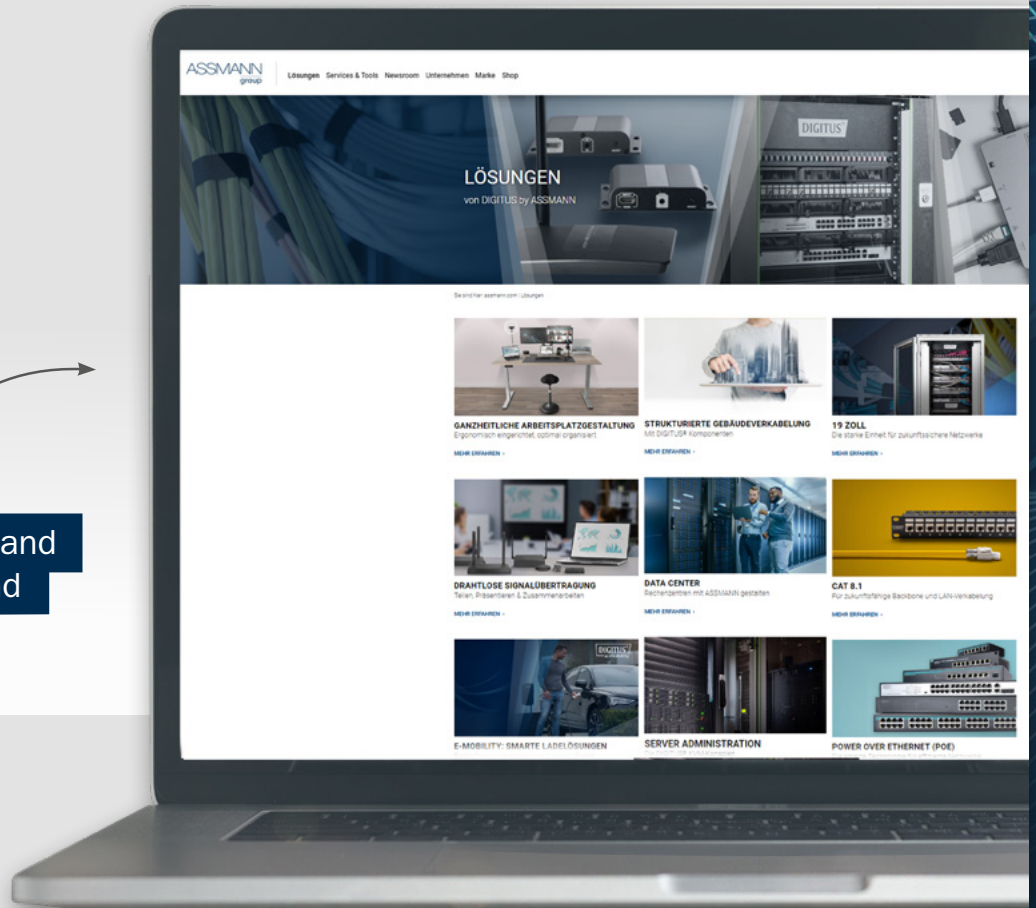
DIGITUS®

## DISCOVER MORE OF OUR COMPREHENSIVE SOLUTIONS

For more information and  
solutions can be found  
on our website



<https://www.assmann.com/en/solutions/>



ASSMANN  
germany

[www.assmann.com](http://www.assmann.com)

DM-30420

Mentioned brand names and logos are trademarks or registered trademarks of their respective owners. Design deviations from the illustrations, errors and technical changes are reserved. All information without guarantee. We assume no liability for printing errors. Delivery subject to change, only while stocks last. 01/2023

ASSMANN Electronic GmbH

Auf dem Schüffel 3, 58513 Lüdenscheid

Tel.: +49 (0)2351 554 0

[www.assmann.com](http://www.assmann.com)