

USER'S MANUAL

USB 2.0 Docking Station



Features and Specification :

Function	<ul style="list-style-type: none"> ✧ Compatible with Notebook and Desktop PCs ✧ Two USB 2.0 Downstream link ports Hub. ✧ One PS/2 Port for Keyboard ✧ One PS/2 Port for Mouse ✧ One Serial Port(RS-232). ✧ One Parallel Port (Standard IEEE-1284 Parallel Port) ✧ One USB Host Link. ✧ One LAN link port.
----------	---

Interface	✧ Universal Serial Bus (USB) Revision: 2.0/1.1
Connectors List	<ul style="list-style-type: none"> ✧ One Upstream Port (USB B Type) ✧ Two USB 2.0 Downstream ports (USB A Type) ✧ One PS/2 Port for Keyboard, 6-pins Mini-Din (female) connector. ✧ One PS/2 Port for Mouse, 6-pins Mini-Din (female) connector. ✧ One Serial Port, DB 9-pins (male) connector. ✧ One Parallel Port (Standard IEEE-1284 Parallel Port). DB 25-pins (female) connector. ✧ One USB Host Link Port (USB mini B type) ✧ One RJ45 (LAN) Port. ✧ One DC-JACK.
Cable	✧ USB connection cable (A to mini B type)
Transfer Rate	✧ USB2.0 hub data transfer rate: High-Speed up to 480Mbps.
Power	✧ 5V Power Adaptor supply.

Requirements :

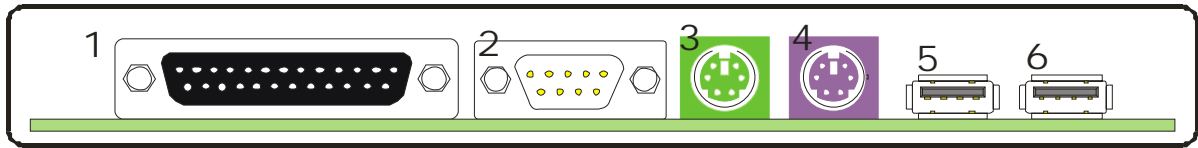
- ✧ USB 2.0 Host card or USB 2.0 HUB.
- ✧ Windows 2000, Windows XP, Windows ME or Windows 98SE operating system.

Packing Contents :

Item
7 in 1 Docking Station
USB Cable
User's Manual
Power Adaptor
CD Driver

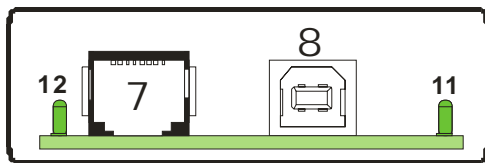
Hardware Installation :

Connectors View:



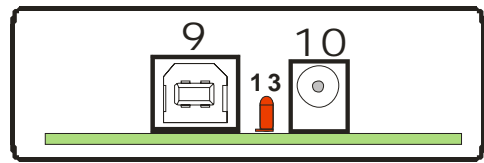
Front Side

- | | | |
|--------------------------|--------------------------------|-----------------------|
| 1. Parallel Port (DB25P) | 3. PS/2 Mouse (Mini-Din 6P) | 5. USB Port1 (A-Type) |
| 2. Serial Port (DB9P) | 4. PS/2 Keyboard (Mini-Din 6P) | 6. USB Port2 (A-Type) |



Left Side

- | |
|-------------------------------|
| 7. USB 2.0 Ethernet (RJ-45) |
| 8. USB 1.1 Host Link (B-type) |



Right Side

- | |
|---------------------------|
| 9. Upstream Port (B-Type) |
| 10. Power In (DC-Jack) |



LED

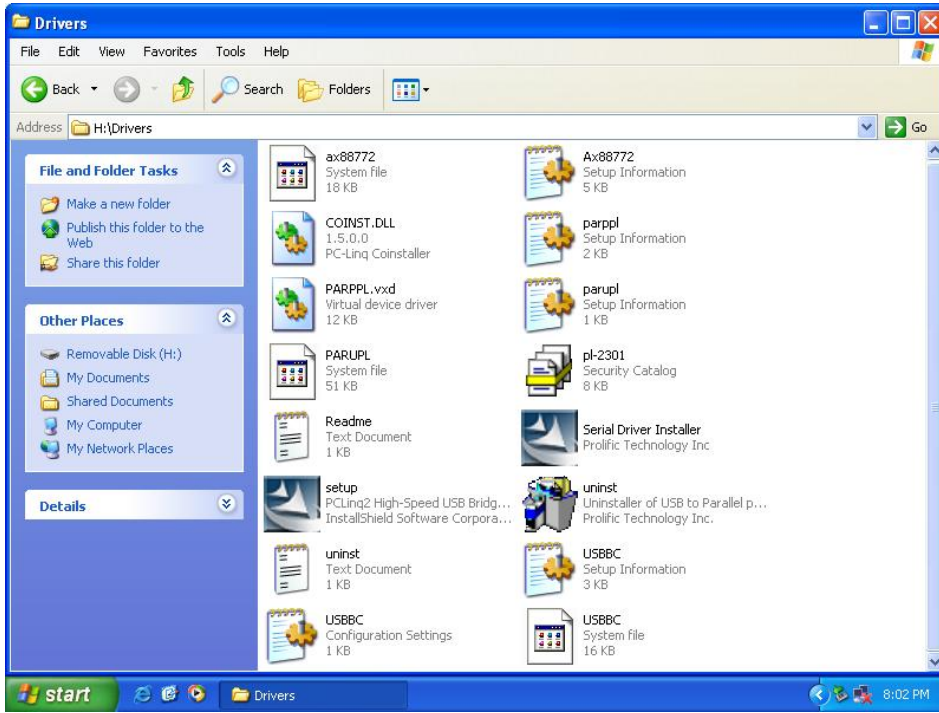
- | | | |
|---------------|------------------|--------------------------|
| 11. Power LED | 12. LAN Link LED | 13. Host Link active LED |
|---------------|------------------|--------------------------|

Software Installation : (First)

Step1 : Please insert the Installation CD into CD-ROM.

Step2 : Please double click "Drivers" folder to setup (Serial port & host-link) driver.

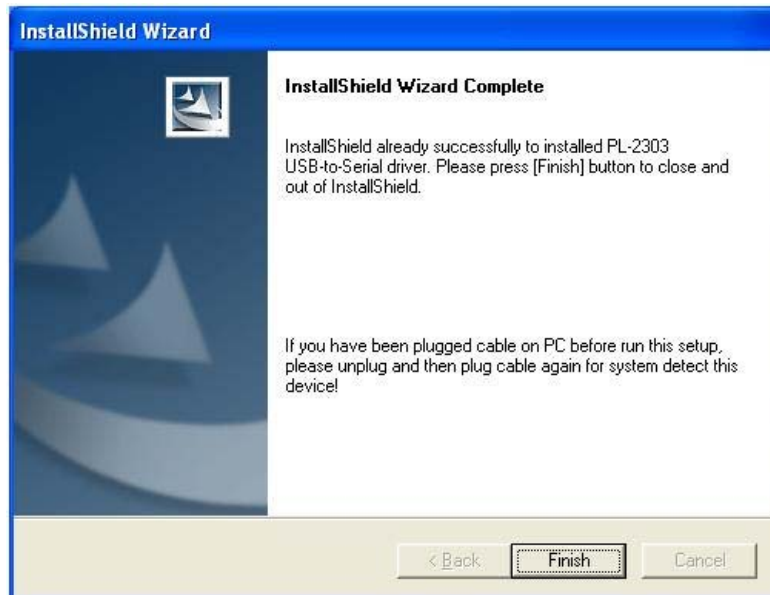
Step3 : Please double click "Serial Driver Installer".



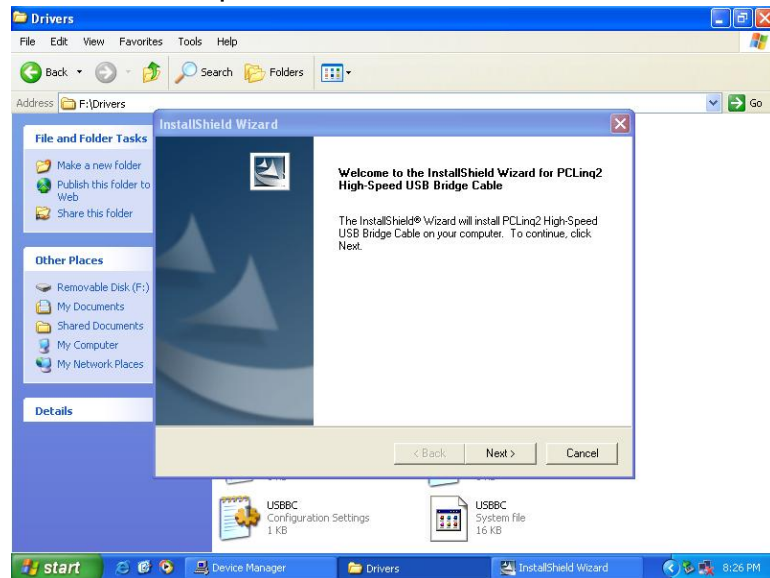
Step4: Please click "Next".



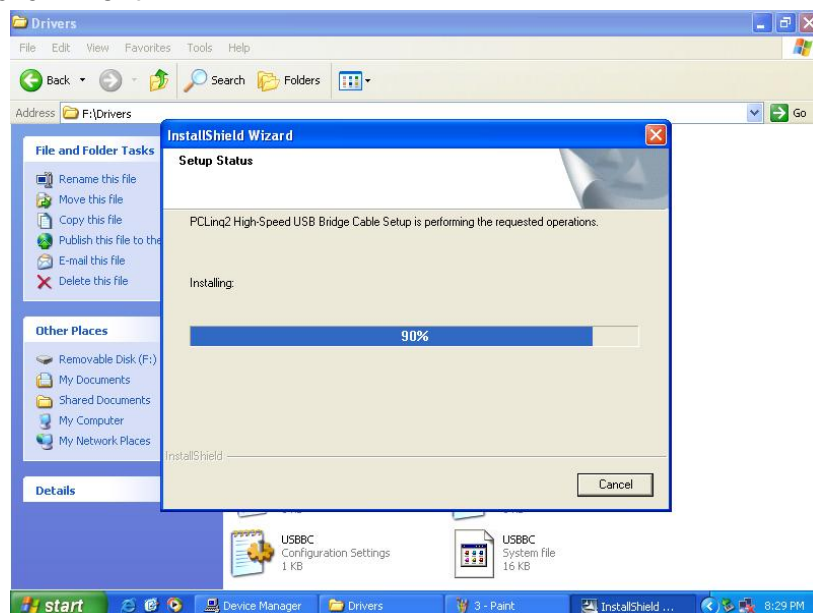
Step5: Please click "Finish".



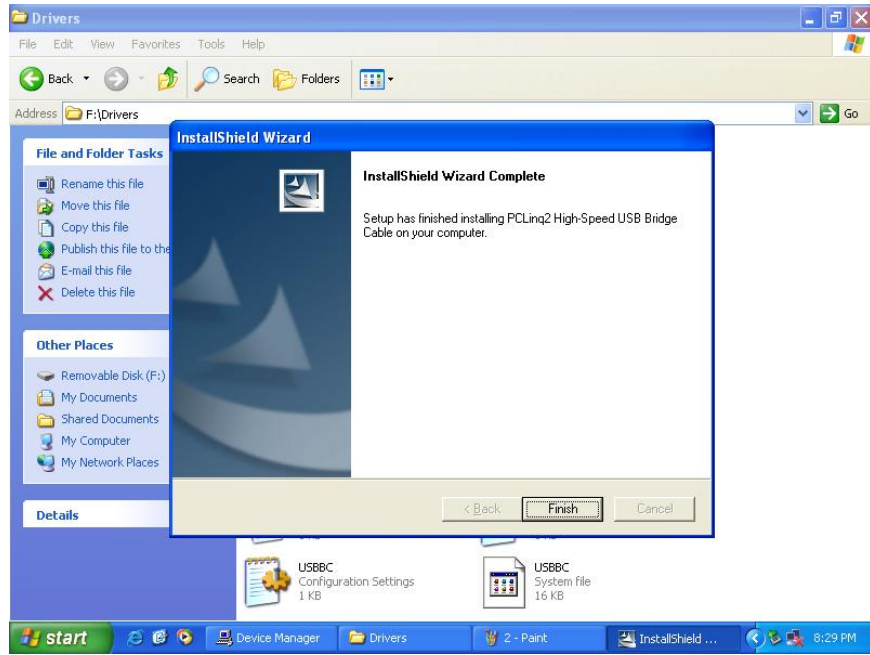
Step6 : Please double click "setup".





Step7 : Please click "Next".



Step8 : Please click "Finish".



Step9 : Please restart PC.

Step10: Your desktop will appear the new icon as  PCLinq2 (ANSI)  PCLinq2 (UNICODE) .

Driver Installation :

Step1 : Please plug-in power (power adaptor to Docking station Right-Side power-in) .

Step2 : Please connect USB cable (PC to Docking station Right-Side USB Upstream Port).

Step3 : The PC will detect Docking station all-device.



Step4: Please click "Next" to continue.



Step5: Please select "CD-ROM drive" and click "Next" to continue.



Step6: Please click "Next" to continue.



Step7: Please click "Finish".



Step8: Please click "Next" to continue.



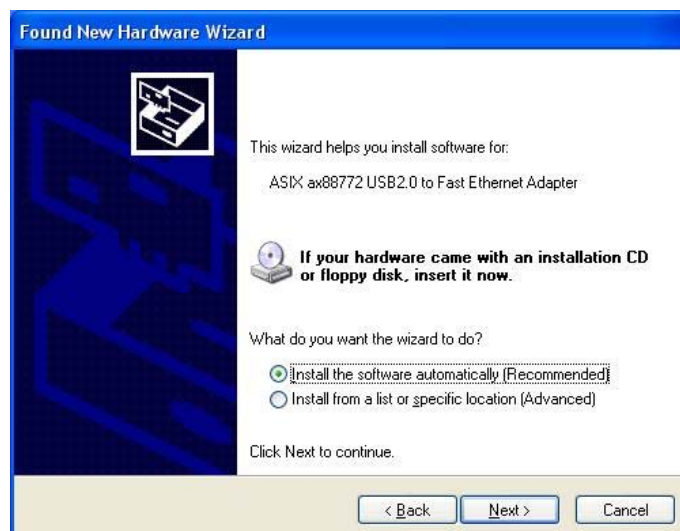
Step9: Please click "Next" to continue.



Step10: Please select "CD-ROM drive" and click "Next" to continue.



Step11: Please click "Next" to continue.



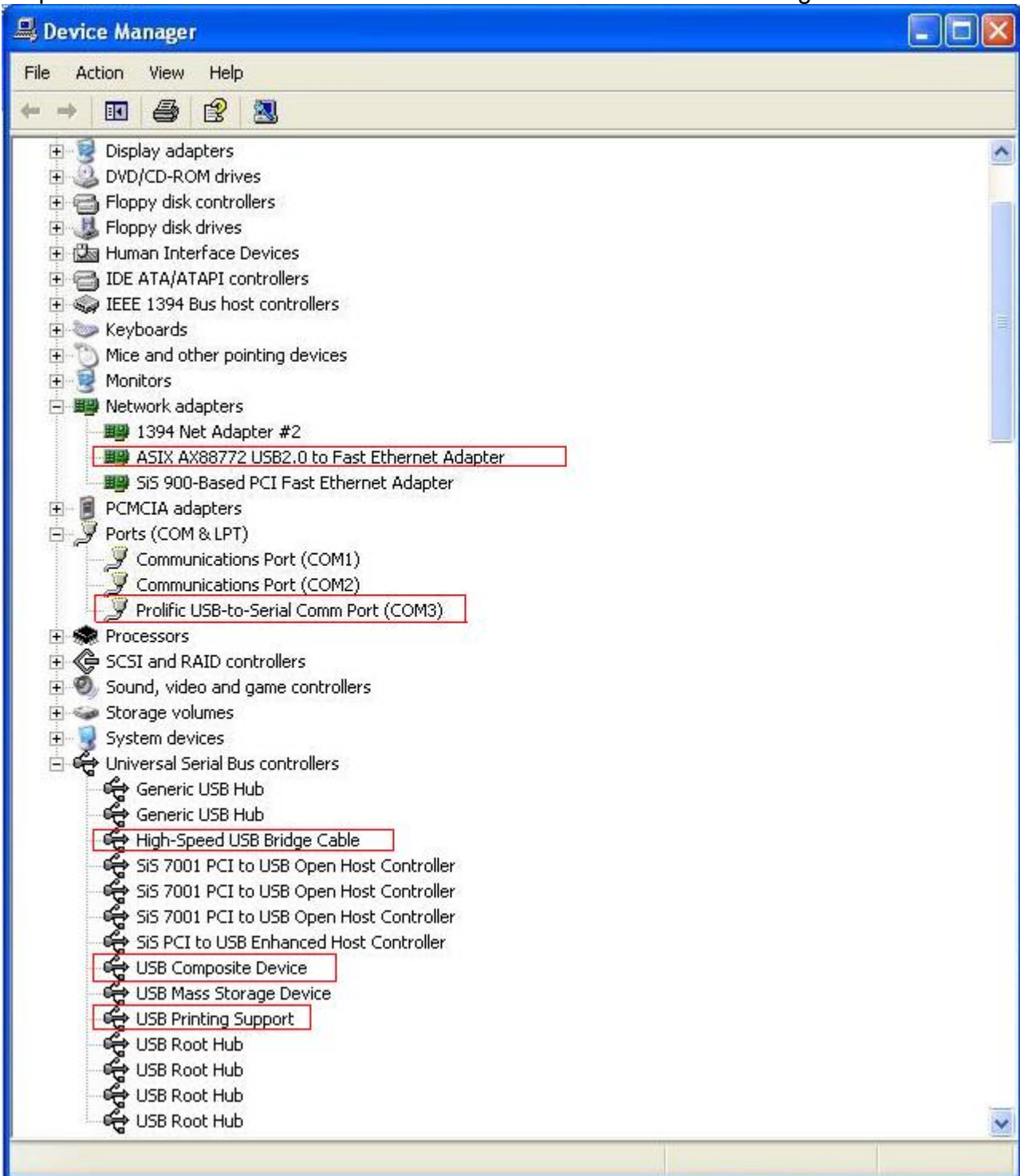
Step12: Please click “Continue Anyway” to continue.



Step13: Please click “Finish”.



Step14: Please sure the driver installation is O.K under “Devices Manager”



Step15: Please connect the devices to docking station, and plug-in power adaptor and USB cable ,you can start to use it now.

P.S These view of driver installation as above are different between all Operating System.

Running the PC-Linq2 Program (For USB host link)

Step1 : Please plug-in USB cable to the one PC.

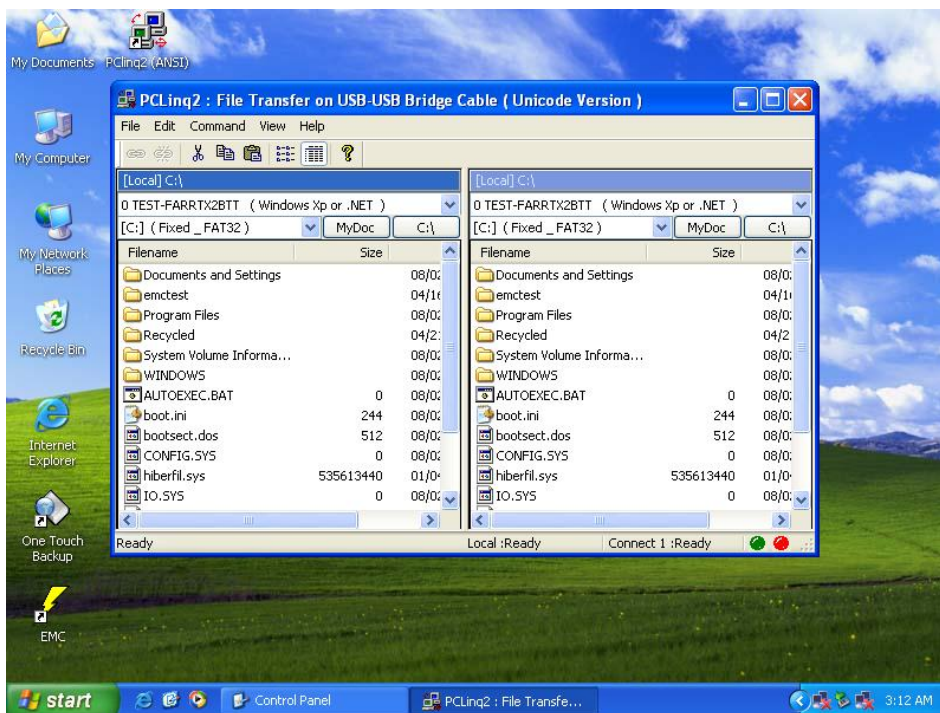
Step2 : Please plug-in USB cable to the other PC.

Step3 : Please double click "PCLinq2".  PCLinq2 (ANSI)  PCLinq2 (UNICODE) on your desktop.





Ps. PCLinq2(ANSI) only for english version windows.

PCLinq2(UNICODE) for any version windows.

Step4 : Two PCs will appear the view as below, you can start to use host link by the this application tool as Copy ,or Delete and Open file of the other PC now.



Appendix

<p>6-pin Mini Din</p>	 <p>6-pin Mini Din Female</p>	<p>Used for I/O applications: mouse, keyboard. The 6-pin Mini Din connector has 6-pins arranged in a round connector. Also known as a PS/2 connector</p>
<p>DB9</p>	 <p>DB9 Male</p>	<p>Used for serial applications: modem. The DB9 connector has 9-pins arranged in two rows one on top of the other. The top row has 5 pins and the lower row has 4 pins.</p>
<p>DB25</p>	 <p>DB25 Female</p>	<p>Used for parallel applications: printer. The DB25 connector has 25-pins arranged in two rows one on top of the other. The top row has 13 pins and the lower row has 12 pins.</p>
<p>8-pin RJ-45</p>	 <p>8-pin RJ-45 Plug</p>	<p>Used for voice/data applications:pbx, networking, dumb terminal, point-of-sale. The RJ-45 connector has 8-position, 8-conductor arranged in a single row.</p>

Notes: For PS2 /Serial Port /Parallel Port Connection Guide (No supported Hot plug and play)

***** If you want to use PS2 mouse, keyboard, Serial port and Parallel Port ,please link these devices to docking station first, then plug in power adaptor and USB cable for boots normally.