



KVM over IP Matrix System

Extreme Flexibility, Absolute Control



Why KVM over IP?

In addition to the unlimited distances offered by a networked solution, utilizing over IP technology for video, audio, and control data distribution and extension offers boundless flexibility and scalability for centralized or distributed network operation.

Advantages include the fact that controllers can configure connectivity architecture and the overall size of the KVM installation based on specific requirements, and systems can be designed to accommodate large distances, unlimited users, any-input-to-any-user configurations, high performance and varying levels of system redundancy and resilience.

So, the major benefit of IP-based KVM in the control room is limitless scalability and flexibility. An IP-based KVM system also provides more extension options beyond traditional keyboard-monitor-mouse, including server sharing, video extension, and multicasting.

For these reasons, IP-based control units mean you can upgrade your IP management efficiency at the same time as increasing productivity and reducing operational costs.

Leading the World in KVM Innovations

World acclaimed for innovations that drive connectivity and access solutions, ATEN brings you the advanced KVM over IP Matrix System. Leveraging our expertise in network and video technologies, we've brought together a unique blend of features that offer the optimum solution for extended applications in different environments.

Our KVM over IP Matrix System allows virtual KVM matrices to be installed in control rooms to create workspace flexibility with instant access to various servers and video sources. The ultimate benefits are the video wall function and shared access modes, combined with advanced security options. These make the KVM over IP Matrix System perfect for security, broadcasting and traffic control rooms. Furthermore, in retail environments, the system can connect point-of-sales consoles with computers to centralize the IT infrastructure in a server room. With additional support for touch screens, full HD, and virtual media, our solution provides the ultimate in flexibility and flow

ATEN's near-40 years of excellence and more than 500 patents in these related areas means that we are at the forefront of the seamless integration of A/V with IT. We understand the increasing complexity of control room and server room requirements; we provide end-to-end design and manufacturing, and we strive to be as competitive as possible. And all that know-how translates into the right KVM over IP control solution for you.



ATEN KVM over IP Matrix System

4K over IP connectivity for the control room of the future

The ATEN KVM over IP Matrix System is an innovative solution that combines KE Series Extenders with the KE Matrix Management Software (CCKM) to extend, control and monitor access to computers across a network in a multitude of ways. The system lets you set up a matrix of workstations that access computers across a network with the flexibility to configure each connection for the seamless data flow required for any and all applications.

KVM over IP Matrix System



4K30 4:4:4



Digital Audio



PoE



Fiber-Optic



Video Wall



Boundless Switching



Preview



Scheduling

Robust Hardware

The KE Series Extenders (KE8950/KE8952/KE6900/KE6940/KE6900ST) are installed at computers and workstations, and are configured via the KE Matrix Management Software to create connections between them over a LAN. This allows Extenders to bridge a connection between the workstations and the remote computers they access from anywhere on the intranet.

Powered by ATEN's advanced graphics processor and high performance Gigabit Ethernet controller, the extenders deliver video up to 4K with vivid color and multicasting across a network without any delay.

All models feature ATEN's EDID Expert technology, which selects the optimum EDID settings for smooth power-up and highest quality display, as well as full USB and high speed virtual media support. Extender setups can be configured for one-to-one, one-to-many, many-to-one, and many-to-many workstation-to-computer connections.

Intuitive Software

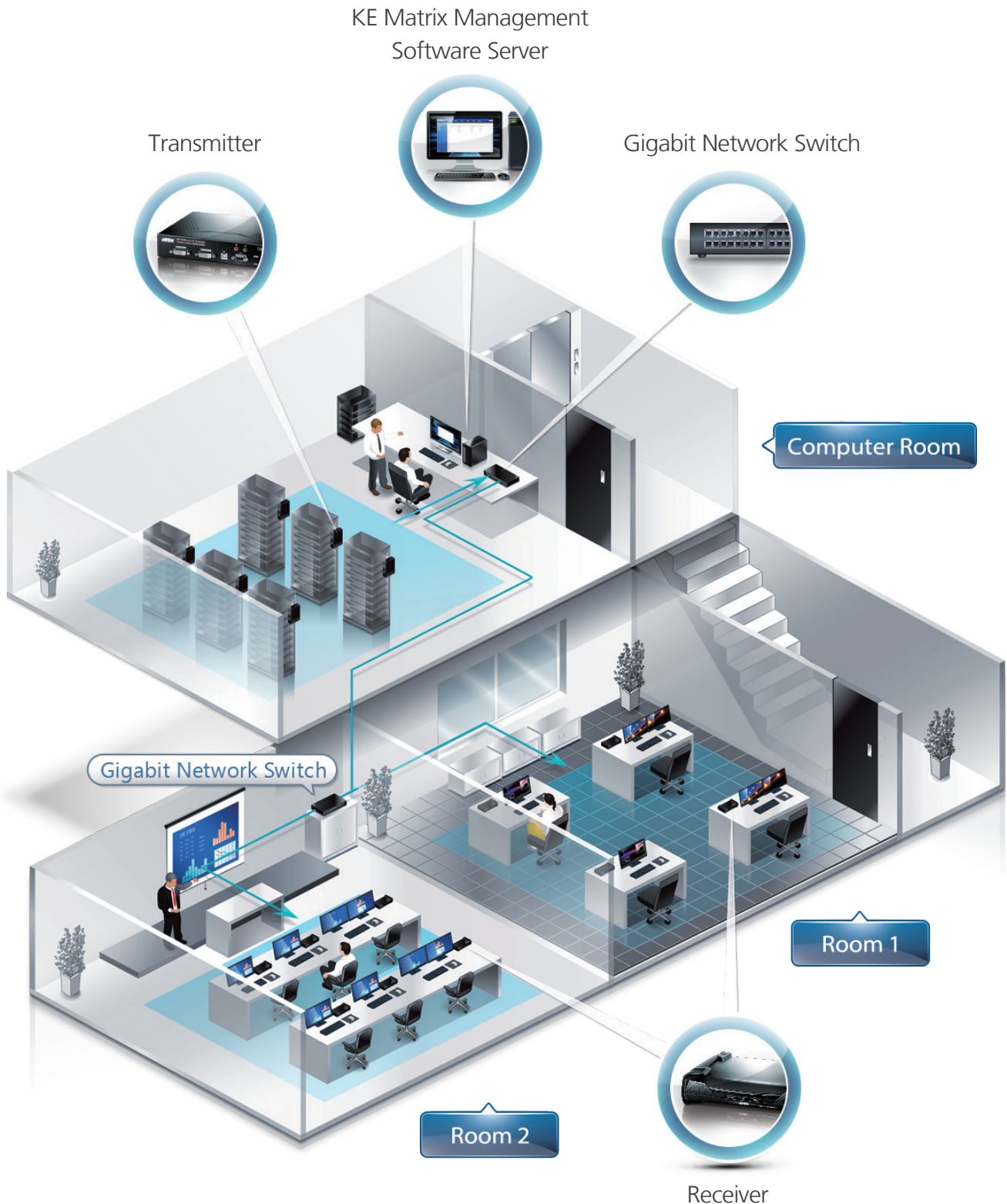
Via an intuitive GUI, the KE Matrix Management Software allows you to define the connections and manage KE Series Extenders with features such as device auto-detection, username/password authentication, switching and sharing of connections, scheduling, permissions, and more.

The KE Matrix Management Software also offers redundancy settings that enable you to set primary and secondary servers in case of server problems, in addition to powerful security features that include external authentication support for LDAP and RADIUS, and more.

Whether you're extending computer access for a monitoring, broadcasting, editing or workstation setup, the KVM over IP Matrix System gives you the flexibility and control to manage any number of extended computers.

Lets Your Network Flow

Don't let distance or space limitations disrupt your creativity and production. The KE Series Extenders can extend and deploy computers with high definition 4K displays across multiple stations in a variety of applications that suit any environment. Expand computer use to stations across multiple rooms with dynamic access.



ATEN Real Visual Compression Technology

ATEN Real Visual technology is an advanced image compression technology that has been specially refined for utilization in the KE series of KVM over IP Extenders. It provides the highest rate of video data integrity for resolutions up to 4K@30Hz over a 1GB network switch, and provides high quality imaging for both text and natural scenery.

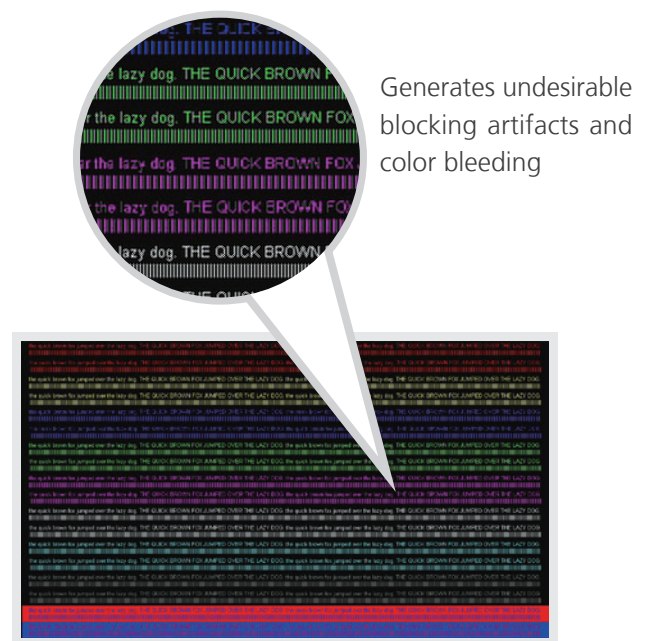
ATEN Real Visual compression is one of the most effective methods of image compression. By using ATEN Real Visual technology, the details of video in 4:4:4 color sampling can be preserved in the transmission process. The human eye is particularly sensitive to low frequency information (also called luminance) in images, and so because ATEN Real Visual compression boosts information in this area, effectively reducing distortion, this is what makes it especially useful in video applications over long distances.

The ATEN Real Visual technology compression process from the local transmitter to the remote receiver has a latency of about 1-2 frames. Compared to other kinds of compression, such as Standard H.264 that has a latency of more than 10 frames, ATEN Real Visual compression is therefore especially useful in KVM applications where it can mirror mouse movements with latency less than 32ms so that it does not impair the operator's experience. ATEN Real Visual compression also produces a higher rate of image integrity than other kinds of compression. For example, it completely eliminates JPEG mosquito aliasing effects, and this is extremely important for word processing or applications that require the highest video quality possible (4:4:4), such as medical imaging.

Video Quality Compression



ATEN Real Visual
4:4:4 Color Space



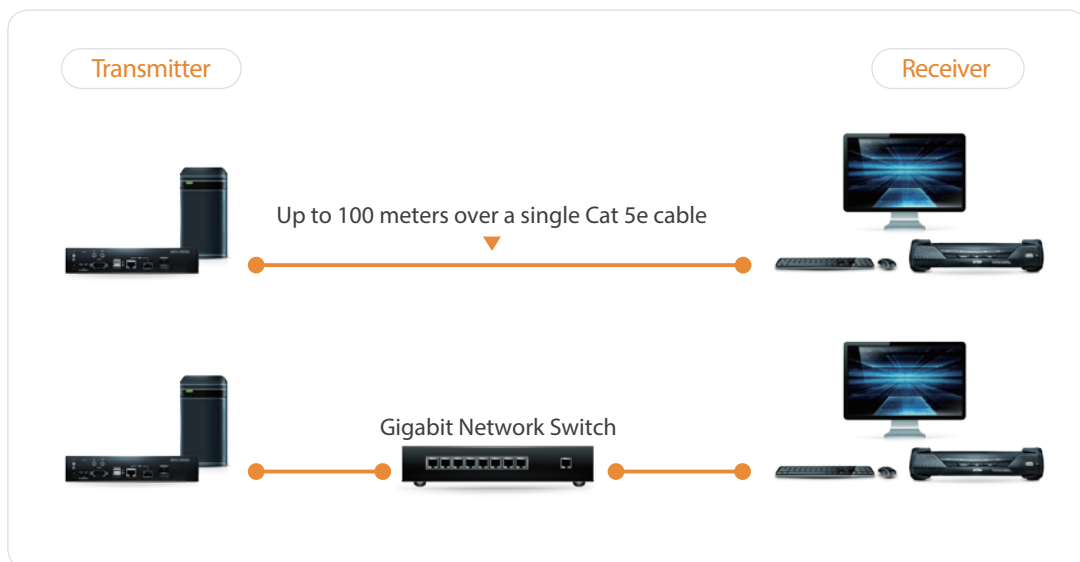
JPEG
4:2:0 Color Space

Flexible Configuration to Meet Your Needs

The KVM over IP Matrix System is designed for the ultimate in flexibility when setting up and managing devices on a network. By utilizing a network connection, we provide a straightforward and easy installation process, followed by simple, intuitive management with the CCKM, which allows you to create various types of connections. Customized connections can be defined by you and set with user and group access permissions.

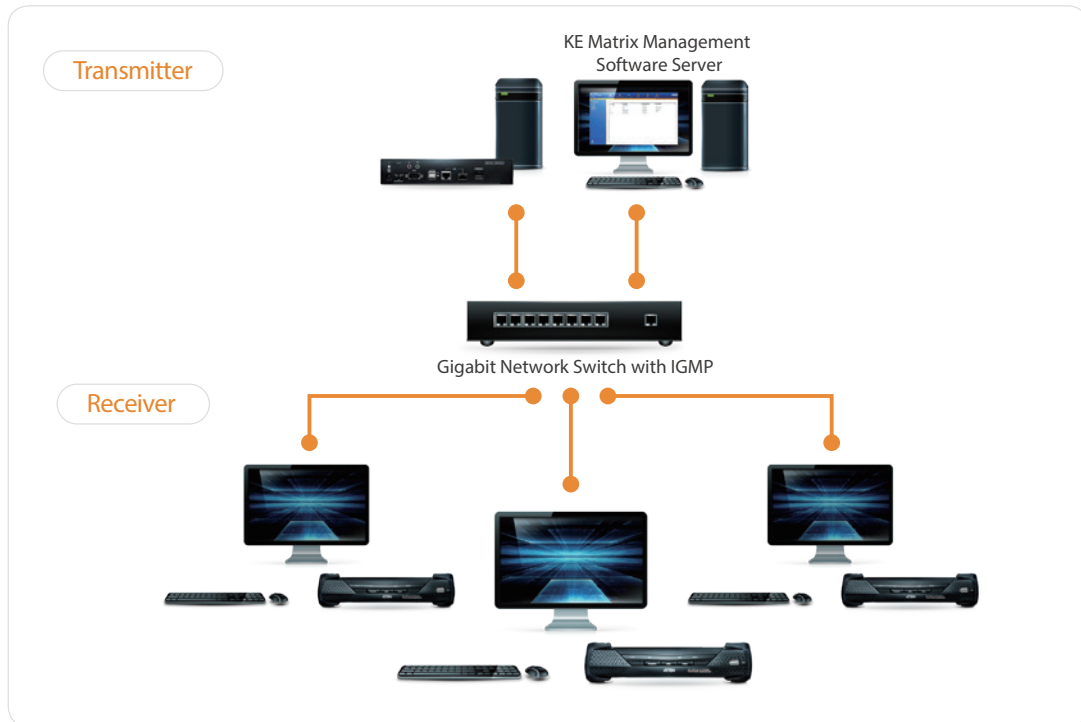
Extender Mode

One-to-One: This is the simplest setup; using a single transmitter to receiver connection that extends a computer's distance from the keyboard, mouse and monitor. One-to-one setups can be directly connected by a Cat 5e/6 cable between two units – up to 100 meters. The KE89 series can also be connected via optical fiber cables for distances up to 10 kilometers. You can also manage point-to-point connections, set up over a LAN with no distance limitations, by assigning each device an IP address.



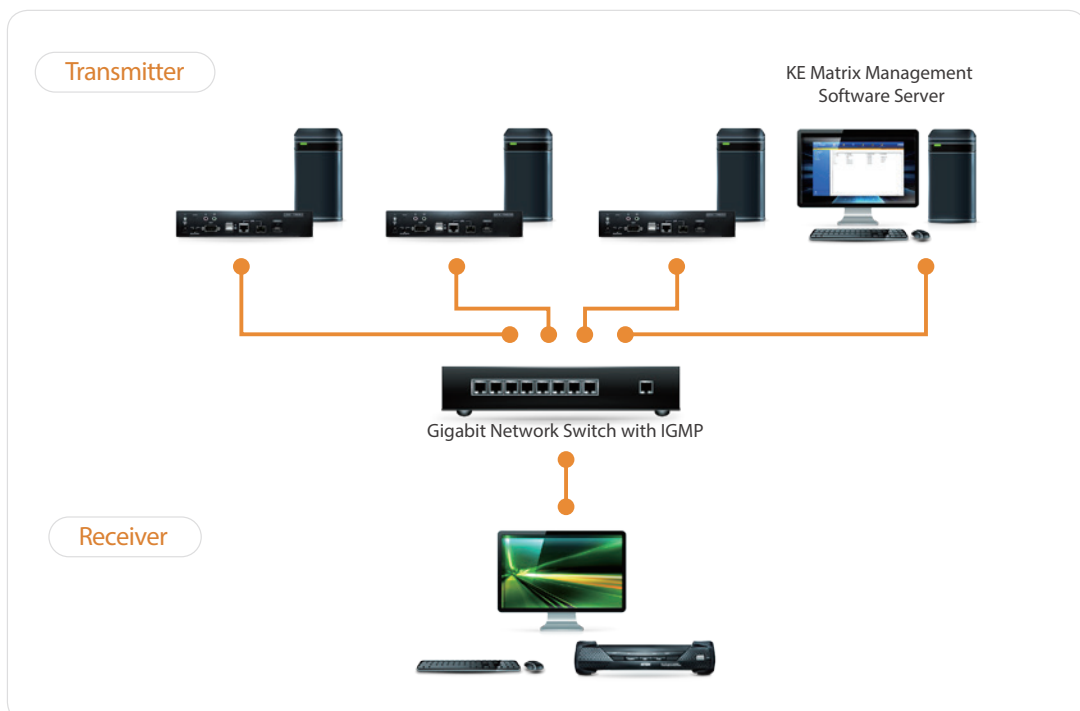
Splitter Mode – Shared Connection

One-to-Many: This setup allows a remote computer to be shared among multiple KVM receivers. Share and collaborate on projects with coworkers to increase productivity, exchange information and provide training. With the KE Series Extenders you can configure how to share a computer when multiple users access it: Exclusive (first user has control - others no access); Occupy (first user has control - others view only - when first is inactive - next user to move the mouse takes control); Share (all users have control at the same time); or View Only (all users can only view the content but have no control).



Switch Mode – Switching Access

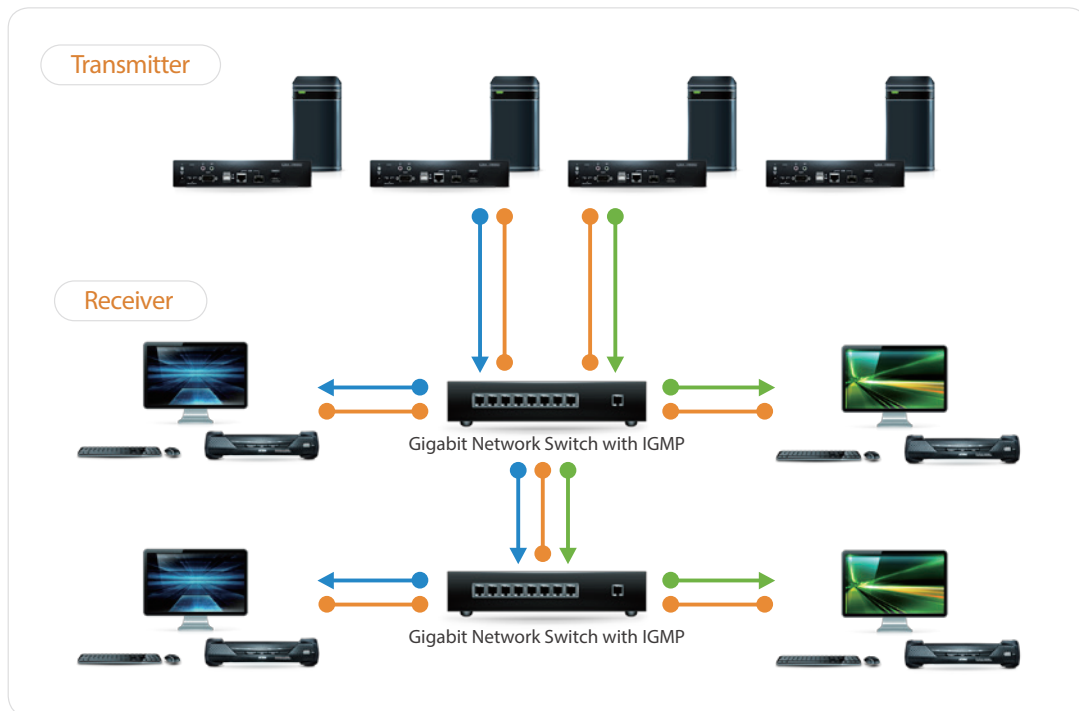
Many-to-One: This setup over a network allows the KVM receivers to switch access between different computers individually and simultaneously; and allows the streaming of video, audio, USB, and serial connections from different computers.



Matrix Mode – Multicast efficiently and intelligently

Many-to-Many: This setup delivers the ultimate in flexibility and performance by allowing multiple KVM consoles to switch access between different computer resources across a network. This provides dynamic and flexible extender setups with superior video quality and smooth KVM operations without delays or lags. Utilizing network bandwidth efficiently is crucial for media post production, live video streaming, and monitoring control. Multicasting helps optimize network traffic by directing information to the designated receivers without increasing network bandwidth.

*For one-to-many, many-to-one, or many-to-many use, the installation requires a network switch with IGMP functionality.



ATEN KVM over IP Matrix System

– Key Advantages



IP Network Technology

Eliminates the distance restrictions of control room management; enables a faster response to mission-critical data center emergencies.



Flexible and Scalable

The ATEN KVM over IP Matrix System allows computers and stations to be deployed anywhere then the KE devices extend the connections flawlessly.



Dynamic Management

ATEN's KE Matrix Management Software makes it easy to administer all KE devices over a network with a new intuitive user-friendly web based GUI.



Stunning Video Quality up to 4K

ATEN's advanced graphics processor delivers high-definition images up to 1920x1200 @ 60Hz at 24-bit color depth (KE69 series) / 3840x2160 @ 30Hz (KE89 series) at 36-bit color depth for stunning colors and razor-sharp video quality even with the most intense video streams.



Visually Lossless Compression for Flawless Graphics

KE Series Extenders deliver real-time true to life images to the receiver's display using lossless compression so that the original data is perfectly reconstructed – technology that delivers the same video quality locally as is generated on the remote computer.



Single / Dual Output Options

The KE8950/KE8952/KE6900/KE6900ST models support an HDMI/DVI display at each end; while the KE6940 supports two DVI displays at each end providing a dual-display output.



Zero Delay Switching

ATEN's unique Fast Switching technology features instant switching between different video resolutions on remote computers to a local display without latency. This provides immediate viewing of critical information for video surveillance or monitoring applications.



PoE Functionality

The KE8952 features PoE (power over Ethernet) functionality, so the transmitter and receiver can receive power and communications over a single cable.



Range of Access Rights

Administrators can set four permission types to manage access requirements: Exclusive, Occupy, Share, and View only.



Immediate Share

Users can push and pull screen content to and from other consoles for collaboration, troubleshooting, or simply sharing.



Virtual USB

If the special functions of your keyboard or mouse are required but do not work with the console ports, you can plug the keyboard or mouse into the USB port and select "Generic USB Device Mode" to enable USB bypass and make those special functions available for console use.



Digital Audio Support

The KE89 series supports full bass response for high quality 7.1 channel surround sound systems via HDMI. HDMI audio can be extracted and stereo audio can be embedded.



Flexible Network Connectivity

All KE devices support unlimited distances via Cat 5e/6 over a LAN, while the KE89 series also supports connectivity via a SFP fiber optic transceiver module over an optical Ethernet network.



Video Wall Versatility

With unprecedented video quality and unmatched resolutions the video wall functionality allows users to create multiple video walls with up to 8 x 8 displays (64 displays).



Secure Data Transmission

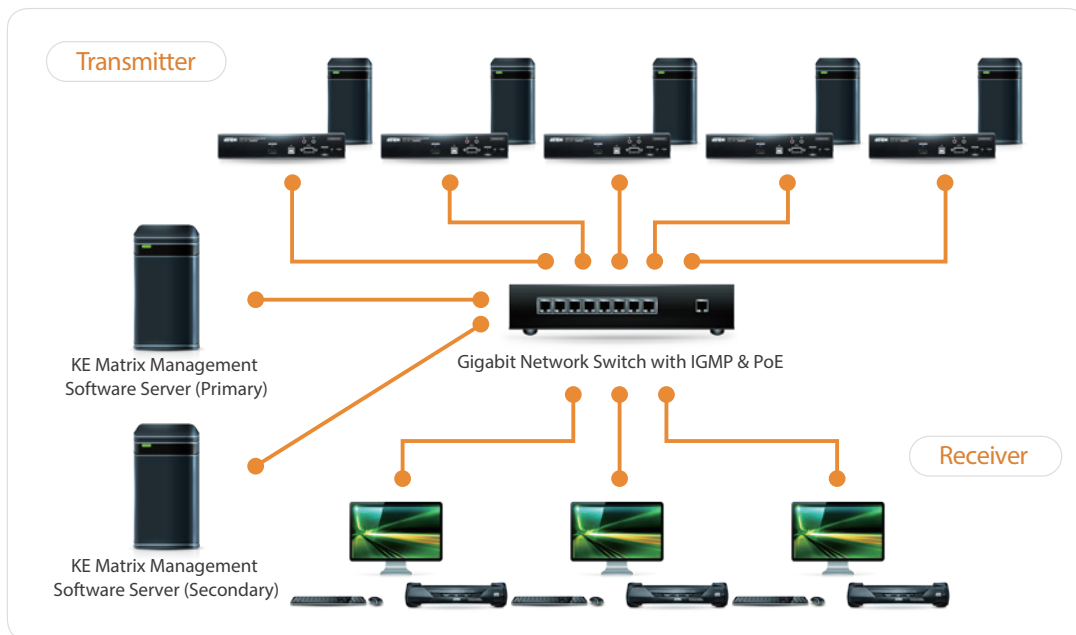
The KE series utilizes AES-128 bit encryption to secure KVM / audio / RS232 / data before it's transmitted over a network and decrypts on the receiver.



Blistering Fast Connectivity

With an integrated Gigabit chipset that allows a higher bandwidth throughput at up to 10x the speed of conventional 10/100 Mbps devices, we ensure a smooth network transmission that delivers high resolution graphics and crystal clear video flawlessly.

Eliminates Distance Limitations



KE8950 / KE8952

4K HDMI KVM over IP Extender



4K

4K30 4:4:4



Digital Audio



PoE



Fiber-Optic

The KE8950 / KE8952 4K HDMI KVM over IP Extenders route KVM, audio, USB, and serial signals at unlimited distances via Cat 5e/6 over a LAN or via a SFP fiber optic transceiver module over an optical Ethernet network. Both models support HDCP-compatible HDMI up to 4K @ 30Hz (4:4:4), while the KE8952 features PoE functionality, so the transmitters and receivers can receive power and communications over a single cable. With flawless and visually lossless video compression quality, the KE8950 / KE8952 provides fast-switching, secured data transmission (with AES-128 bit encryption), and can be utilized flexibly in both extender and matrix modes for multi-display installations and video wall applications.

KE6900 / KE6940

Single Display /
Dual Display DVI KVM over IP Extender



KE6900ST

Slim Single Display DVD-D KVM over IP Transmitter



The KE6900 / KE6940 DVI KVM over IP Extenders consist of a transmitter that connects to the computer and a receiver that provides console access from a remote location. This is perfect for use in any type of installation where you need the KVM console to be placed for your convenience, but you want the computer to reside in a secure location. They provide visually lossless and low latency video transmissions up to 1920 x 1200 @ 60Hz and are able to route audio, KVM, USB and serial data separately. The KE6900 supports one DVI-I input and the KE6940 supports two DVI-I inputs. The KE6900ST, a transmitter, supports DVI-D input.

Model	KE6900ST	KE6900	KE6940	KE8950	KE8952
Connectors					
Console Port	N/A	USB-A (F) × 2, DVI-I (F), Audio 3.5mm in & out, DB-9 (M)	USB-A (F) × 2, DVI-I (F) × 2, Audio 3.5mm in & out, DB-9 (M)	USB-A (F) × 2, HDMI (F), Audio 3.5mm in & out, DB-9 (M)	
KVM Port (TX Only)	USB-B (F), DVI-D (F), DB-9 (F)	USB-B (F), DVI-D (F), Audio 3.5mm in & out, DB-9 (F)	USB-B (F), DVI-D (F) × 2, Audio 3.5mm in & out, DB-9 (F)	USB-B (F), HDMI (F), Audio 3.5mm in & out, DB-9 (F)	
Virtual USB	N/A	•	•	•	•
Virtual Media	•	•	•	•	•
LAN Port	RJ-45 × 1 (1Gbps)				
SFP Port	N/A	N/A	N/A	Single-mode: 10km; Multi-mode: 550m	
Emulation					
Keyboard / Mouse	•	•	•	•	•
Video					
Resolution	Up to 1920 × 1200 @ 60Hz			Up to 3840 × 2160 @ 30Hz (4:4:4)	
Color Depth	24-bit			36-bit	
Dual Display	N/A	N/A	•	N/A	N/A
Fast Switching	•	•	•	•	•
OSD	N/A	•	•	•	•
Video Wall	•	•	•	•	•
HDCP	N/A	N/A	N/A	1.4	1.4
Power					
PoE	N/A	N/A	N/A	N/A	•
Others					
Data Rate	600Mbps			800Mbps	
Cable Included	USB DVI-D KVM Cable (TX Only)			USB HDMI KVM Cable (TX Only)	
Software	KE Matrix Management Software (CCKM)				
Free License	8				

*All KE Series Extenders are compatible with each other.

Dynamic Advanced Management

ATEN's KE Matrix Management Software (CCKM) provides IT administrators with tools to centralize the control and management of KE Series Extenders in their IT environment. Currently in its latest version with a new easy-to-use installation wizard, it allows simple, intuitive administration of all KE devices with an enhanced user-friendly, web-based GUI.

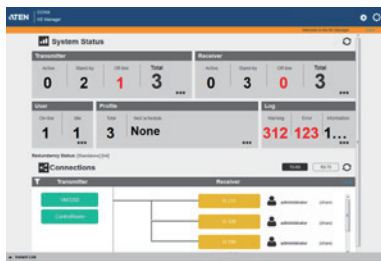


The CCKM's Primary-Secondary architecture safeguards data transmissions through built-in redundancy factors, including automated database backup of Primary and Secondary servers and device configurations in addition to real-time database updating. Redundancy ensures that if the Primary server goes down, the KE Matrix system will remain functioning, since a redundant Secondary server maintains all the required services until the Primary server comes back up.

Through the CCKM, the KE Series Extenders provide advanced features for username and password authentication, user authorization and auto-detection of all transmitters and receivers. With secure transmissions in mind, the KE6900 and KE6940 implement AES-128 bit encryption, while RADIUS, LDAP and AD ensure secure authentication.

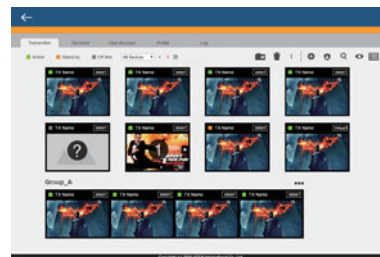
Dashboard

Provides system status, KE connections, user login, schedule profiles and current sessions at a glance.



Real-time Preview

Monitor all transmitters simultaneously on one screen.



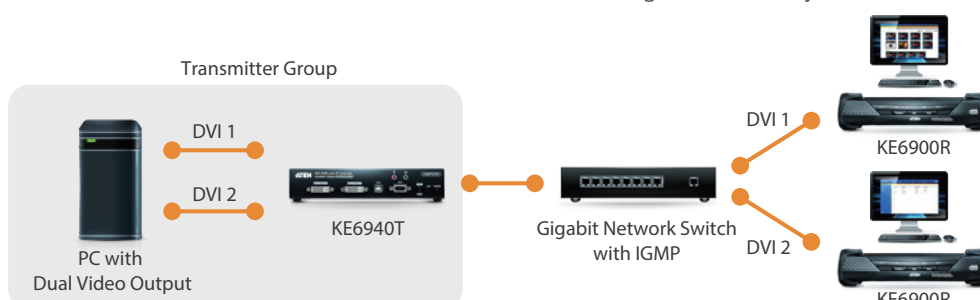
Boundless Switching

Switch between computers by moving the mouse across the display border.



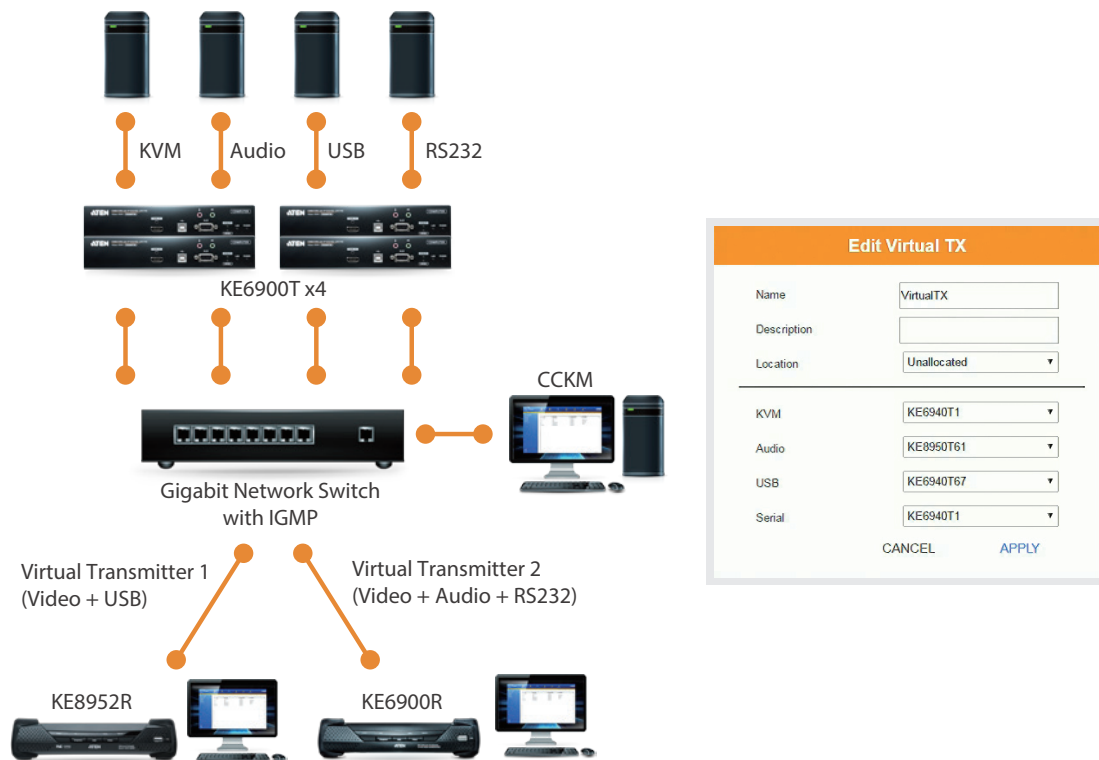
Intelligent Dual Video Output Management

Using KE6940T, two video outputs from a PC can be delivered to multiple receivers as two separate sources. This is especially beneficial for single display receivers (e.g. KE6900R / KE8950R / KE8952R) because operators can switch to either one of sources from the OSD instead of accessing source 1 only.



Virtual Transmitter

Separate KVM, audio, USB, or RS-232 data streams from different transmitters can be combined into virtual transmitters and connected to multiple receivers.

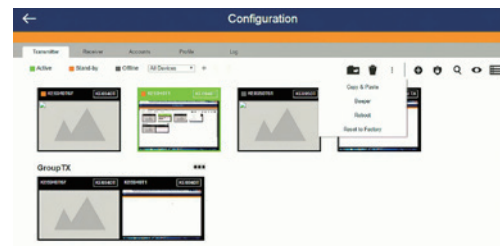
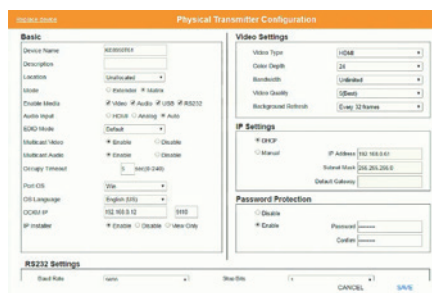


Easy Device Replacement

Device configurations are saved to help bypass the setup process when replacing transmitters/receivers with same settings.

Configuration Copy & Paste

Select any required configurations you want to keep, paste them to the new devices, and everything is ready to go.

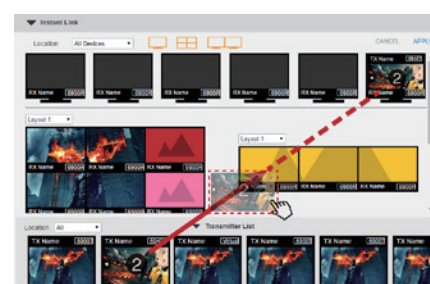
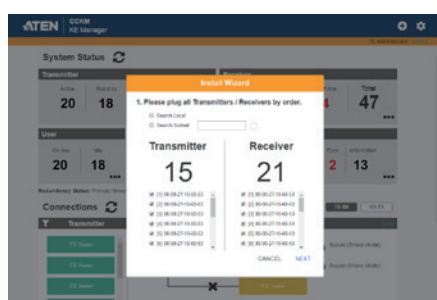


Install Wizard

Detects all devices in the LAN automatically for quick installation.

Instant Link

Connect transmitters and receivers with a simple drag-and-drop.



Versatile Video Walls

ATEN's KE Matrix Management Software allows you to create custom video walls with up to 8 x 8 displays in various configurations, providing flexible, scalable installations with predefined display content that is easy to schedule.

Single Source

A source from a single transmitter can be cropped into sections for flexible display configurations:



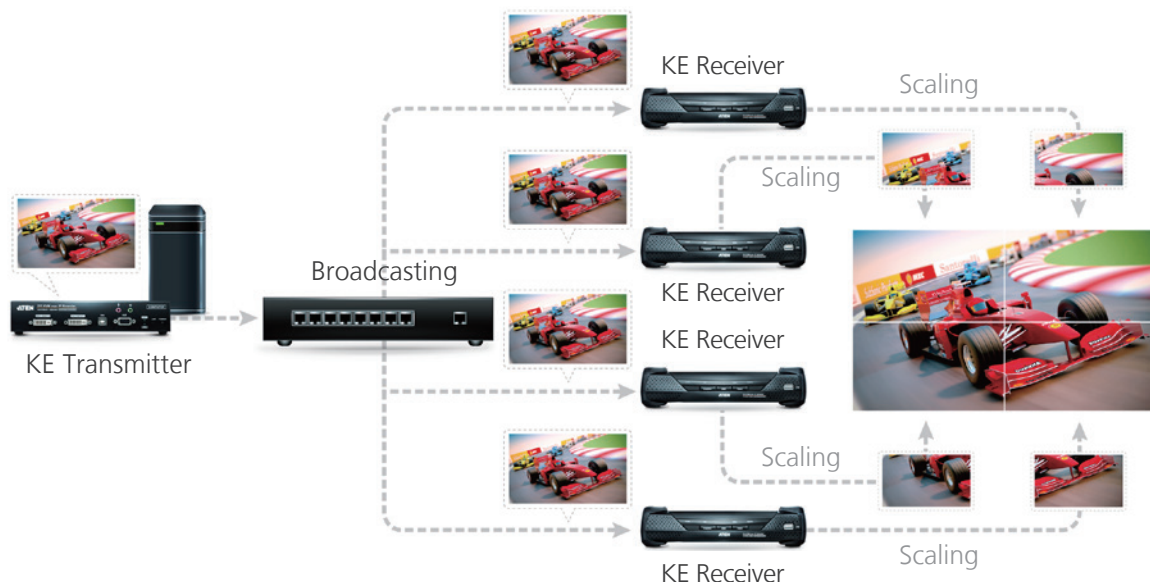
Multiple Sources

Multiple sources from multiple transmitters offer unlimited combinations:



Video Wall Synchronization

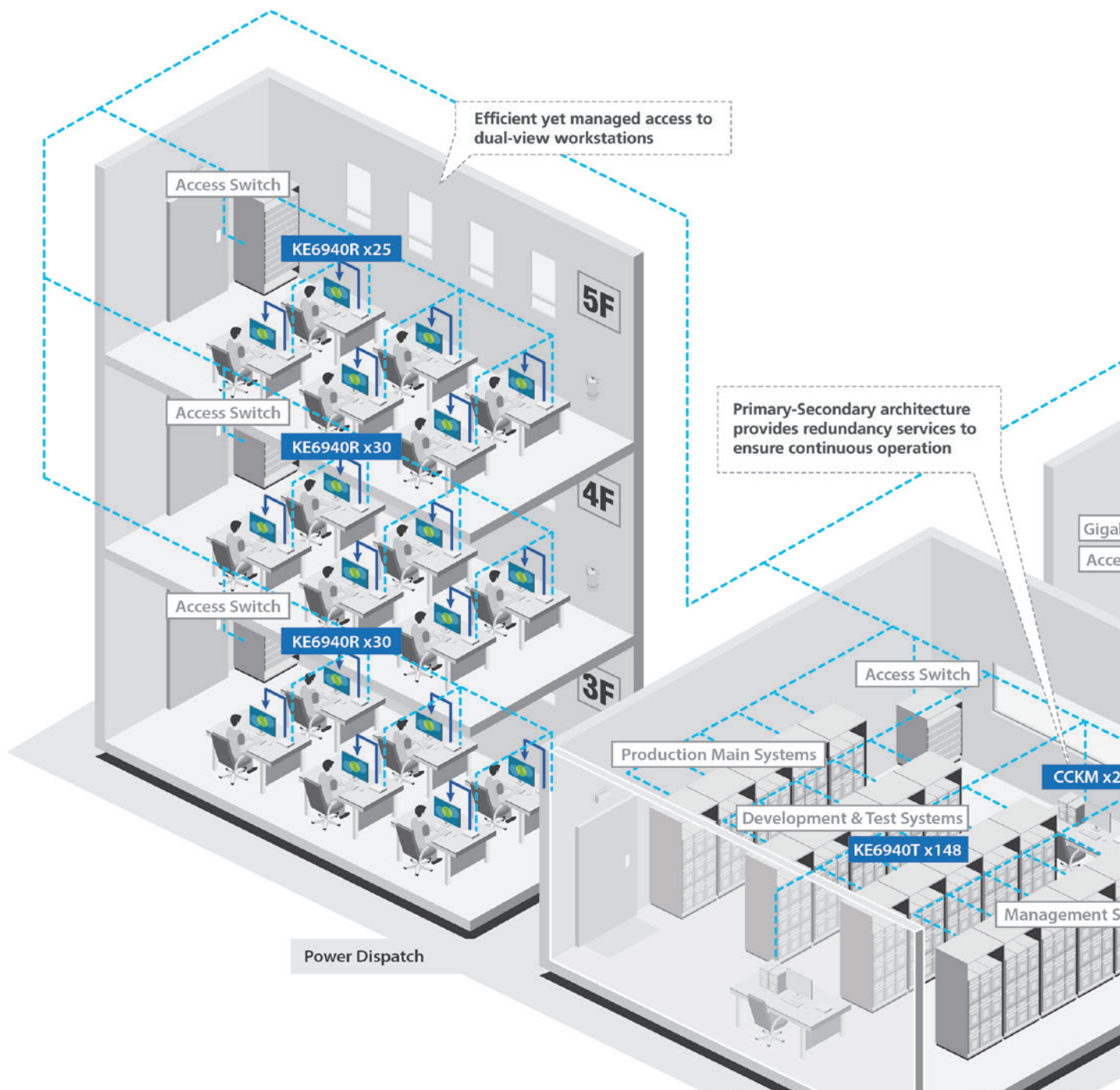
The KVM over IP Matrix System's multicast functionality means it is able to broadcast packets. When the network switch receives the packets, it simultaneously sends them to all of the designated KE devices in the installation for display:



ATEN Solutions in Action

Utilities & Process Control Centers

In Utilities & Process Control Centers, operators continuously monitor and control constant flows of manufacturing, industrial control process, infrastructure/equipment status, and the dynamic change on demand to guarantee production and distribution in the best possible way. The challenges include providing an integrated real-time overview of process flow and equipment status for better situational awareness and decision making, along with a flexible and ergonomic system deployment for efficient yet managed access to devices. Information integration and visualization are especially important in these scenarios – from detailed network distribution information to topological overviews of the service area – in addition to redundancy/backup support to ensure continuous operations.



Power Distribution Company, China

A state-owned power distribution company in China was looking to relocate and upgrade their large-scale dispatch control center to centrally monitor and manage dual-display and single-display workstations while incorporating an additional KVM solution for 96 communication control servers.

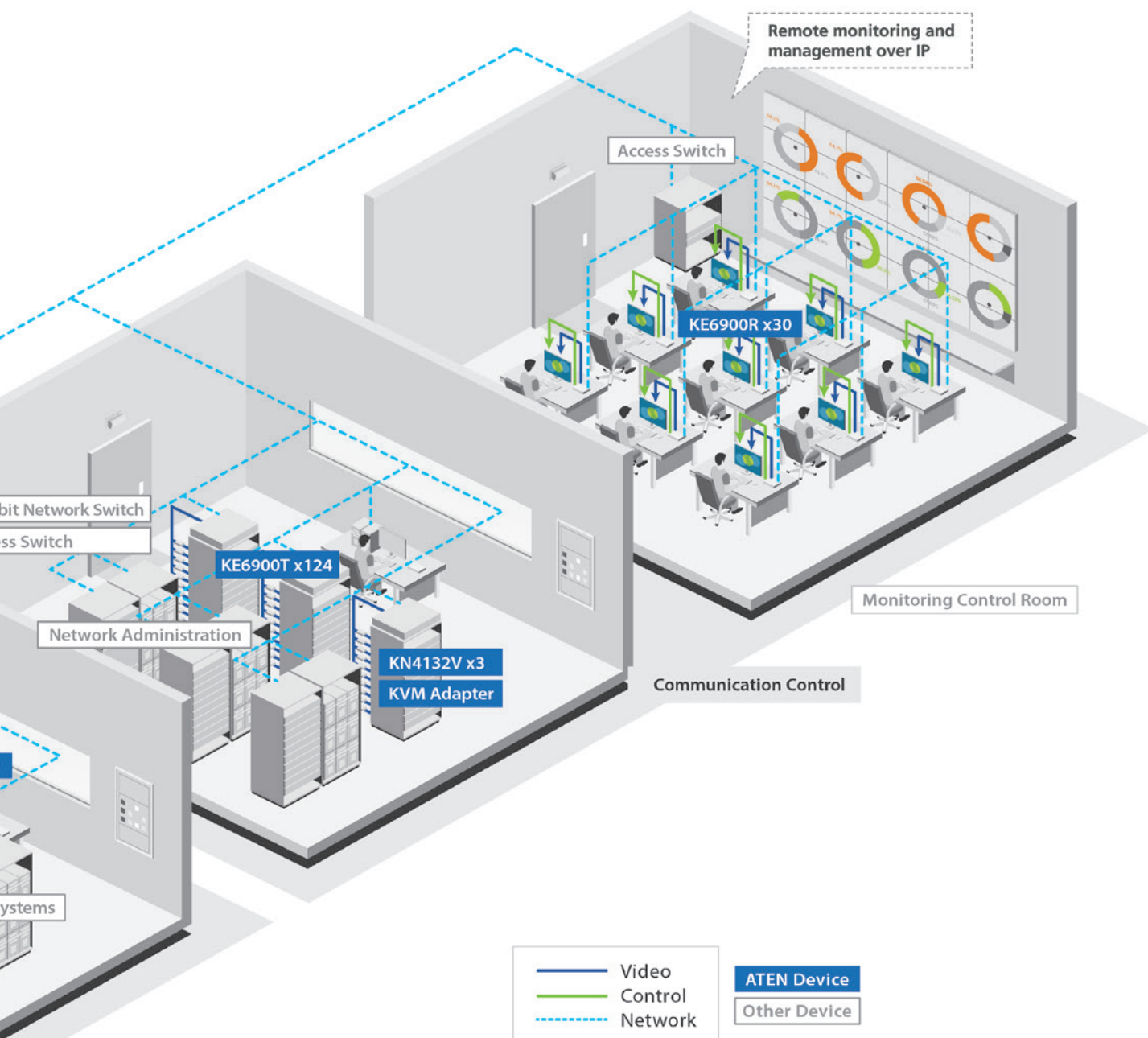
Challenges:

- Desktop extension of multiple single and dual-view workstations distributed across different areas of the power distribution system.
- Providing local and remote data center access from the communication control department to the dispatch center (and an additional monitoring control room).
- Desktop monitor to video wall switching for 2D visualization of the power grid and geographic information.

ATEN solution

Utilized their existing, robust network infrastructure to provide remote access and extended control of both single and dual-view workstations and remote monitoring and management over IP.

- KE6940T/R –Dual Display DVI KVM over IP Extender
- CCKM – KE Matrix Management Software
- KN4132V – 32-Port Cat 5 KVM over IP Switch with Virtual Media



Broadcasting Distribution Monitoring Systems

All operations in broadcasting distribution monitoring control rooms are based on high quality video with multiple displays or video walls. Flexible and scalable device deployment is also important, along with an ergonomic device deployment and management. Most control rooms in broadcasting and media operate on content creation, content storage, post production and playout transmission. Stability in 24/7 operations, permanent yet instant access to servers and workstations, system reliability, and redundancy/backup support must be guaranteed.

Broadcasting Distribution Monitoring, Estonia

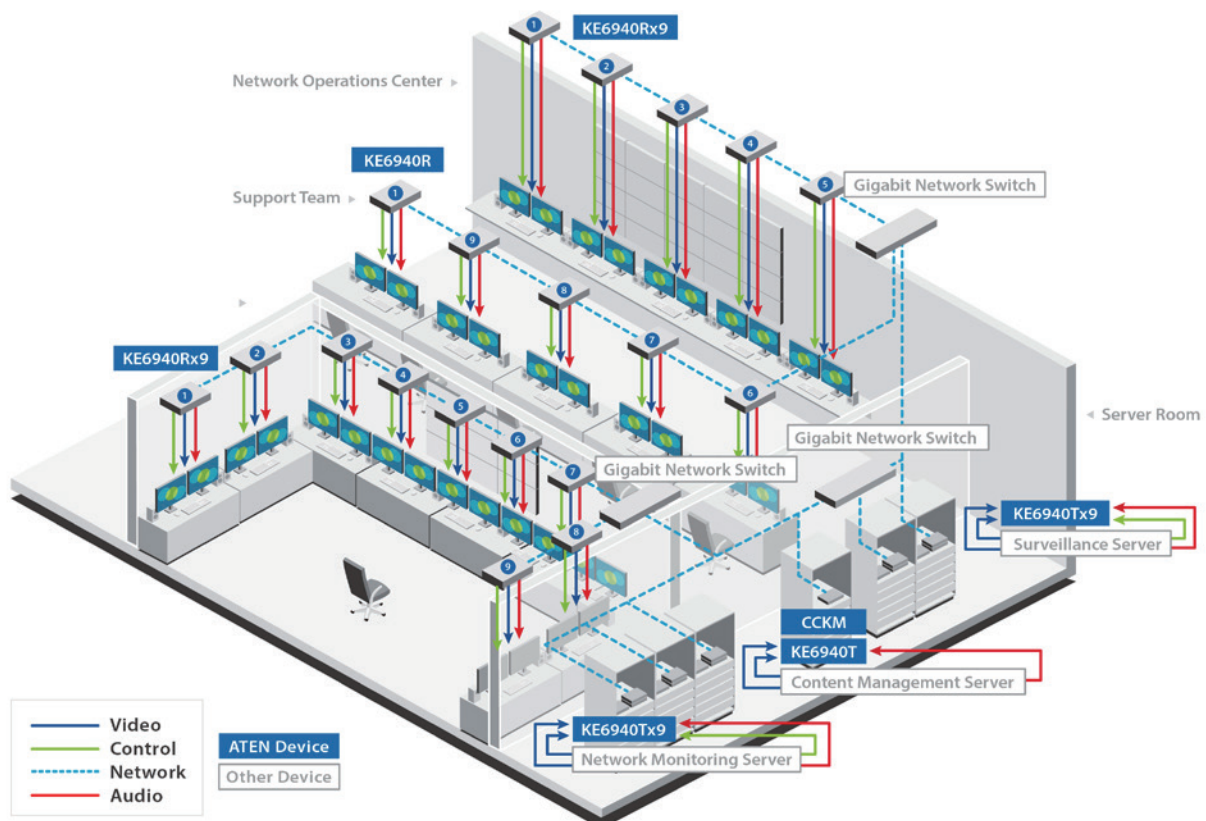
Headquartered in Tallinn, Estonia, Levira is one of the largest TV playout service providers in northern Europe and the main TV and radio broadcast transmission provider in Estonia. The company also operates one of the biggest data centers in the Baltic countries. Levira is developing a state-of-the-art Network Operations Center to manage its key media services, playout and transmission of TV channels to cable TV, data center and cloud services. Once complete, the new NOC will monitor outgoing video signals, environment, equipment health, and the network traffic status of all Levira operations

- Required a solution which, in addition to monitoring, allowed them to control servers when necessary.
- The solution had to ensure an advanced level of security and efficiency that includes remote, yet secure management.
- An expandable solution that allows them to install equipment in a separate room away from the workstations utilizing the existing Ethernet infrastructure.
- Technicians and security personnel need reliable access to dual head DVI microservers, workstations, and NVRs with FullHD 1080p video quality.

ATEN solution

Allowed simple, centralized access control of dual-display DVI servers in Full HD resolution. Provided secure, long distance data transmission and remote access of computers on the KVM installation via intranet.

- CCKM – KE Matrix Management Software
- KE6940T/R – Dual Display DVI KVM over IP Extender



Applications

The ATEN KVM over IP Matrix system is designed specifically to unlock the distance limitations and provide exceptional clarity for video intensive applications.



Control and Monitoring

The ATEN KVM over IP Matrix System provides versatile video walls for controlling multiple computers on one or many displays with multiple user access, meeting the demanding requirements of traffic control centers.

Media Post Production

The ATEN KVM over IP Matrix System can flawlessly distribute video up to 4K and digital audio to multiple workstations, facilitating effective collaboration in real time on a variety of media content.



Command Centers

The ATEN KVM over IP Matrix System can provide responsive, resilient yet secure operations for content integration, interagency collaboration, and mass-distribution in government or military agencies.

Security and Surveillance

The ATEN KVM over IP Matrix System eliminates the limitations and costs of surveillance software while offering versatile and customizable viewing layouts, allowing multiple local and remote access.



Banking and Trading

The ATEN KVM over IP Matrix System can multicast imaging and allow shared access to fulfill the needs of timely distribution of high quality images between hospital floors or across large facilities.

Medical

The ATEN KVM over IP Matrix System can multicast imaging and allow shared access to fulfill the needs of timely distribution of high quality images between hospital floors or across large facilities.





Corporate Headquarters

ATEN International Co., Ltd.

3F., No.125, Sec. 2, Datung Rd., Sijhih District.,
New Taipei City 221, Taiwan
Phone: +886-2-8692-6789 Fax: +886-2-8692-6767
<http://www.aten.com/global/en/>
E-mail: marketing@aten.com

America Region:

ATEN Technology Inc.

15365 Barranca Parkway, Irvine, CA 92618, U.S.A
Phone: +1-949-428-1111 Fax: +1-949-428-1100
<http://www.aten.com/us/en/>
E-mail: sales@aten-usa.com

ATEN New Jersey Inc.

220 Davidson Avenue, Suite 404, Somerset,
NJ 08873, U.S.A
Phone: +1-732-356-1703 Fax: +1-732-356-1639
<http://www.aten.com/us/en/>
E-mail: sales@aten-usa.com

EMEA Region:

ATEN Infotech N.V.

Mijnwerkerslaan 34, 3550 Heusden-Zolder, Belgium
Phone: +32-11-531543 Fax: +32-11-531544
<http://www.aten.com/eu/en/>
E-mail: sales@aten.be

ATEN U.K. Limited

466 Malton Avenue, Slough SL1 4QU, U.K.
Phone: +44-1753-539-121 Fax: +44-1753-215-253
<http://www.aten.com/gb/en/>
E-mail: sales@aten.co.uk

ATEN Poland Sp. z o. o.

ul. Daimlera 2, 02-460 Warszawa, Poland
Phone: +48-669-062-112
<http://www.aten.com/pl/pl/>
E-mail: poland@aten.com

ATEN Russia

Office 14212, No.14 Sereblyakova proezd,
Moscow, Russia.
Phone: +7-495-134-2808
<http://www.aten.com/ru/ru/>
E-mail: russia@aten.com

ATEN Info Iletisim Ltd.

Beştepe Mah.Yaşam Cad. 13-A / 76
Yenimahalle Ankara, Turkey
Phone: +90-312-284-00-27
E-mail: turkey@aten.com

Oceania Region:

ATEN ANZ Pty Ltd.

Suite 3. 19, 32 Delhi Road, North Ryde,
NSW 2113, Australia
Phone: +61-2-9114-9933 Fax: +61-2-8072-3723
<http://www.aten.com/au/en/>
E-mail: sales@au.aten.com

Asia Pacific Region:

ATEN China Co., Ltd.

18/F, Tower A, Horizon International Tower, No.6,
Zhichun Road, Haidian District, Beijing, China 100088
Phone: +86-10-5255-0110 Fax: +86-10-8296-1318
<http://www.aten.com/cn/zh/> E-mail: sales@aten.com.cn

ATEN Japan Co., Ltd. Tokyo Headquarters

ATEN Bldg. 8-4, Minami-senju 3-chome, Arakawa-ku,
Tokyo 116-0003, Japan
Phone: +81-3-5615-5810 Fax: +81-3-3891-3810
<http://www.aten.com/jp/ja/> E-mail: info@atenjapan.jp

Osaka Branch

Awajimachi Dai-Building 3F
3-1-9, Awajimachi, Chuo-ku, Osaka-shi, 541-0047, Japan
Phone: +81-6-6229-5810 Fax: +81-6-6229-8810
<http://www.aten.com/jp/ja/> E-mail: info@atenjapan.jp

ATEN Korea Co., Ltd.

B-303, Gabeul Great Valley, 60-5, Gasan-dong,
Geumcheon-gu, Seoul, Korea, 153-801
Phone: +82-2-467-6789 Fax: +82-2-467-9876
<http://www.aten.com/kr/ko/> E-mail: sales@aten.co.kr

Atech Peripherals, Inc.

6F., No.133, Sec. 2, Datung Rd., Sijhih District.,
New Taipei City 221, Taiwan
Phone: +886-2-8692-6969 Fax: +886-2-8692-6926
<http://www.aten.com/tw/zh/> E-mail: taiwan@aten.com

ATEN India Rep. Office

Unit 406, 4th Floor, Barton Center, M.G. Road,
Bangalore - 560001, India
Phone: +91-80-48517231
E-mail: South-Asia@aten.com

About ATEN

ATEN International Co., Ltd., established in 1979, is the leading provider of IT connectivity and management solutions. Offering integrated KVM, Professional Audiovisual, and Intelligent Power solutions, ATEN products connect, manage, and optimize electronics in corporate, government, industrial, educational, and retail environments. ATEN has 500+ issued international patents and a global R&D team that produces a constant stream of innovative solutions, resulting in a comprehensive portfolio of products available worldwide.

