



Making Networked AV Easy

HDMI over IP Series - VE8950 / VE8900



Why ATEN's Video over IP Solution?

The VE8900 / VE8950 delivers visually lossless 1080p / 4K AV signals with low latency over long distance via a standard Gigabit network.

The solution is designed to address the challenges that system integrators encounter when implementing AV over IP solutions and provides an effective, easy-to-use, and economical digital signage solution with the following features and advantages:



Limitless Flexibility and Scalability

From a simple point-to-point setup, to hundreds of endpoints, the VE8900 / VE8950 offers flexibility, scalability and multi-functionality in extender, splitter, matrix switch, and video wall applications.



Go Further for Less with Daisy Chaining

Easily expand your AV network coverage without cable clutter or extra network switches while also lowering per-port costs.



No Complicated IP Setup

The VE8900 / VE8950 allows you to effortlessly switch input sources via top panel pushbuttons/ID display and offers simple configuration that requires no extensive IT experience.



No Additional Server PCs or Software Required

Effortlessly manage your AV over IP system by logging in to any receiver or transmitter from the web GUI.

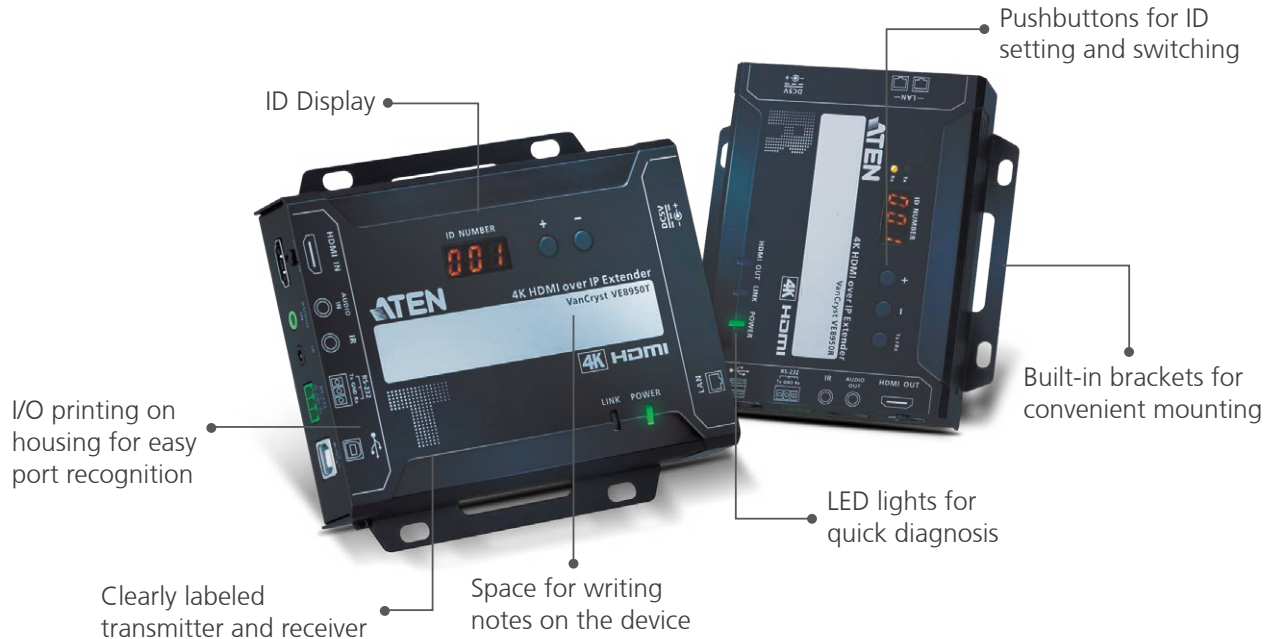
Implementation Guide Available

For a problem-free VE installation experience, be sure to get the Implementation Guide.



User-centered Hardware Design

The VE8900 / VE8950 has been designed with the user in mind. With large, clear ID displays and simple pushbuttons for ID setting and switching, the units also feature I/O printing on the housing for easy port recognition, built-in brackets for convenient mounting, and LED lights for quick diagnosis. There is even a dedicated space on the unit for writing your own labels.



Applications

VE8900 / VE8950 is perfect for large-scale deployments covering hundreds of meters, such as university campuses, stations, shopping malls, and exhibition centers.

Shopping Malls



Convention Centers



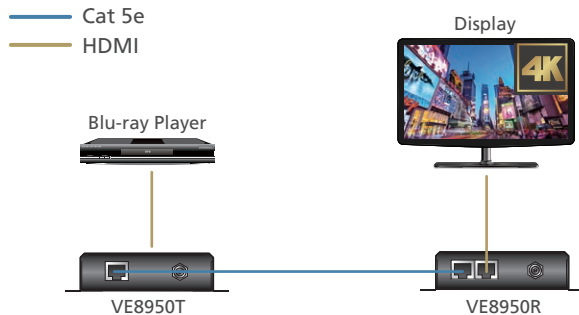
Airports



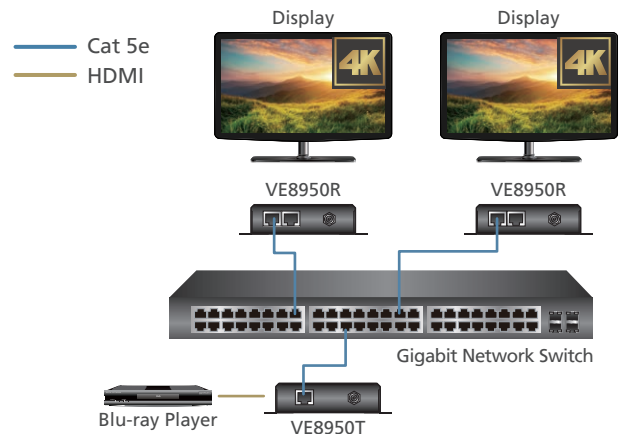
Limitless Scalability and Flexibility

- Extends AV connections from a simple point-to-point to a multi-point to multi-point setup via LAN without distance limitations.
- Offers multi-functionality in extender, splitter, matrix switch, video wall and daisy chain applications.
- Mix and match the latest 4K displays and 1080p screens. The built-in scaler automatically scales incoming video signals to match the maximum resolution of the connected display devices.

Extender Setting

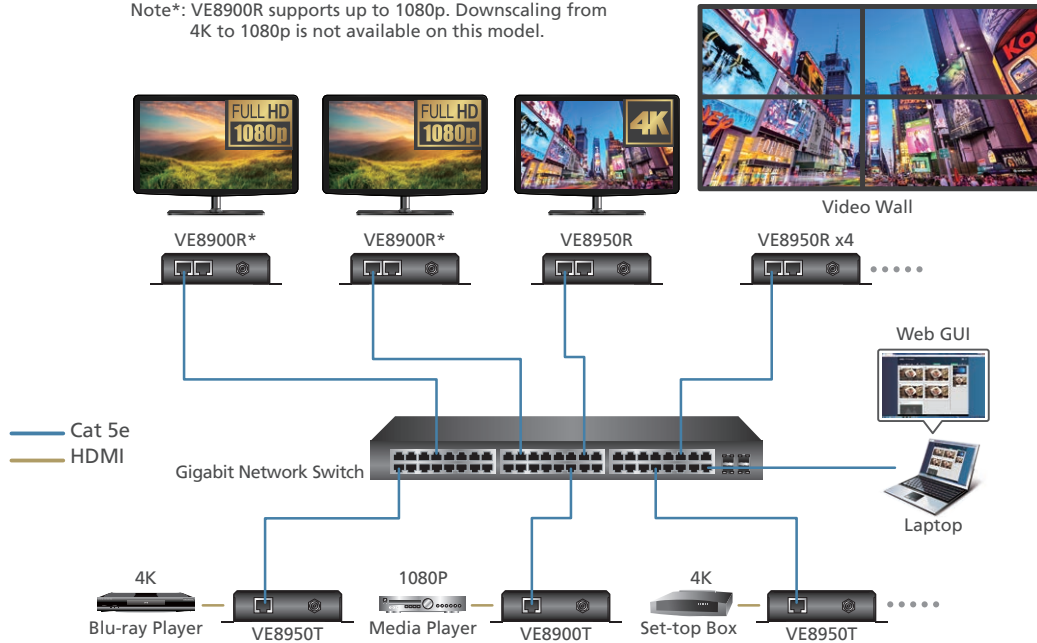


Splitter Setting



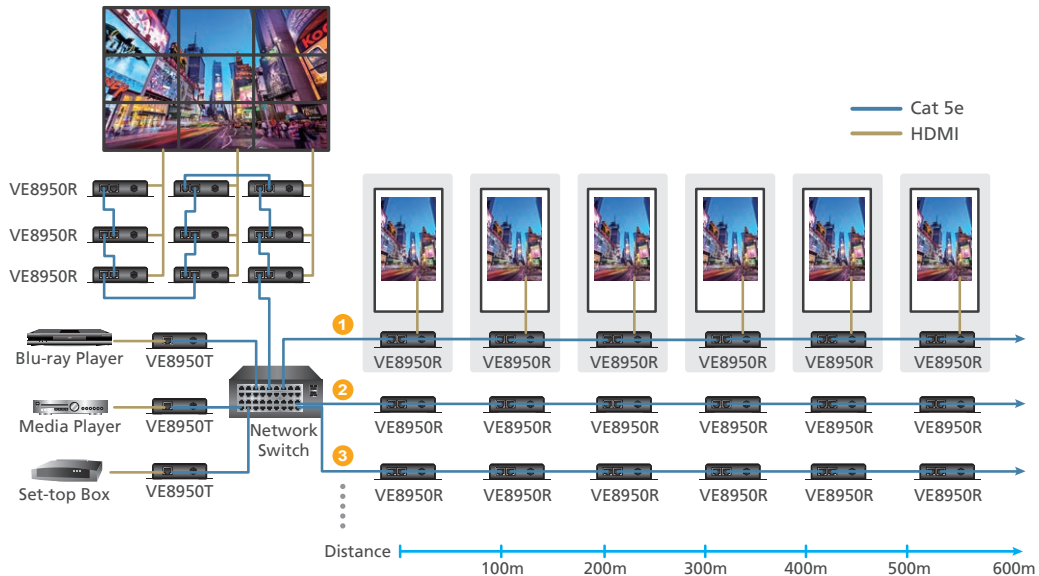
Matrix Switch & Video Wall Complex Setting

Note*: VE8900R supports up to 1080p. Downscaling from 4K to 1080p is not available on this model.



Go Further For Less with Daisy Chaining

- Connects multiple displays through a single port to utilize every port of the network switch and maximize their value.
- Easily expandable – cabling and system deployment is easy with no huge network switches and fewer cables needed.
- Perfect for large-scale deployment covering hundreds of meters, such as hotel facilities, airports, university campuses, stations, shopping malls, and exhibition centers.

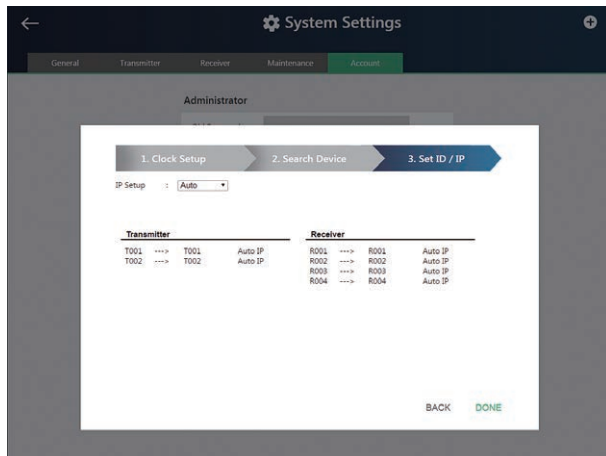


Use daisy chains to configure a video wall or expand the AV system hundreds of meters

No Complicated IP Setup

- VE Manager can help you to assign IP addresses to each device automatically by Auto IP function. Configuration is simple. No extensive IT experience nor extra learning is required.
- Effortlessly switch among input sources via top panel pushbuttons.

Auto IP Function



Top Panel Pushbuttons



No Additional Server PCs or Software Required

- Supports web GUI (VE Manager) for device management.
- No additional server PCs, control boxes, or software/drivers are needed.

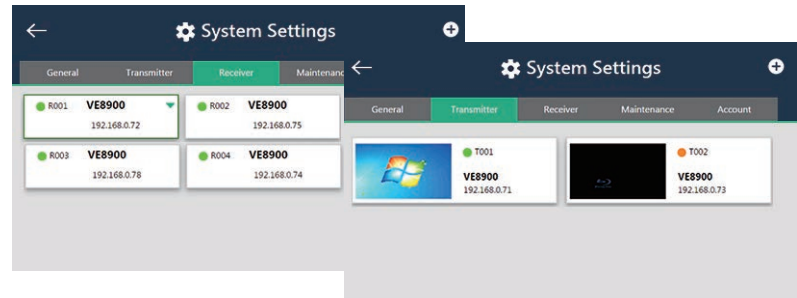
Intuitive Web GUI – VE Manager

The VE89 Series can be configured via its built-in Graphical User Interface (GUI). The system can be accessed from anywhere over a network or the Internet, operators can easily log in via any web browser.

Real-time System Status Monitoring

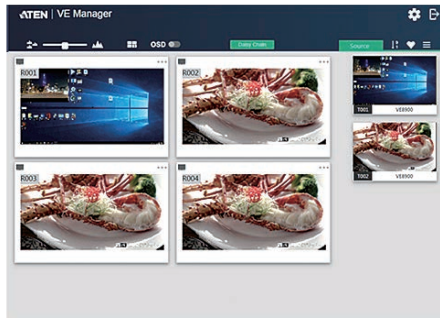
Easily configure and monitor the status of each transmitter and receiver by color indicators.

- Green: Connected and active
- Orange: Standby
- Grey: Offline



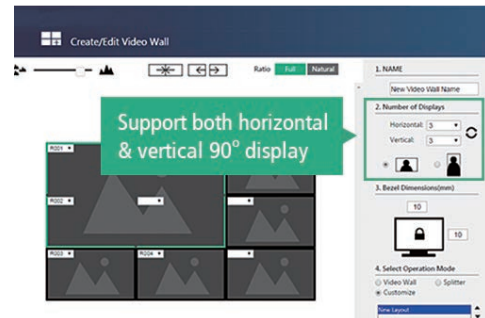
Preview

Allows you to preview the video source in real-time before selecting and showing the content on each display.



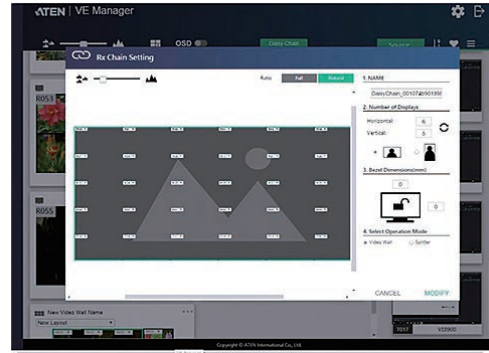
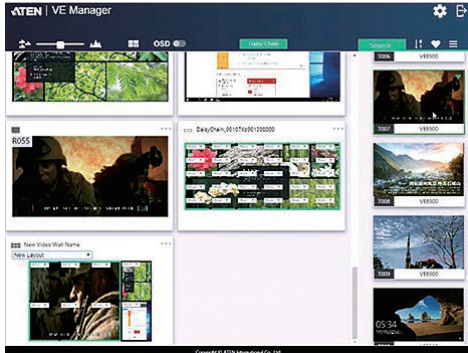
Video Wall Setup

Provides maximized flexibility to manage various video wall layouts.



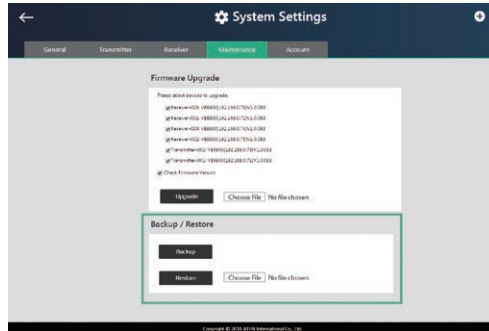
Various Profiles Management

Create video wall, splitters, and matrix profiles effortlessly and manage all your profiles at the same time from a single, intuitive web GUI.



Backup and Restore Settings for Your Convenience

Easily duplicate your VE Manager settings, including the transmitter and receiver layouts and the login ID, and quickly apply the same settings to different locations.



More features

Lightweight Compression with Ultra-low Latency

- Delivers visually lossless high-quality video up to 1080p @ 60 Hz (VE8900) / 4K @ 30 Hz 4:4:4 (VE8950).
- Ensures stunning quality video using ATEN advanced video compression technology.
- EDID Expert™ selects the optimum EDID settings for smooth power-up, high-quality display and the best video resolution across different screens.

Embedded / De-embedded Audio Support

- For VE8900T / 8950T – separate audio signal can be embedded into the HDMI stream.
- For VE8900R / 8950R – audio stream can be extracted from the HDMI stream and delivered as a separate audio signal.

Multiple Control Channels

- Multiple control methods – the system can be managed via Ethernet or top-panel pushbuttons.
- USB Connectivity – USB port (USB 2.0) allows for connection of devices such as keyboard, mouse, flash drive, printer, and other USB peripherals.
- Bi-directional IR Channel – full range (30K~56KHz) IR transmission is processed one way at a time.
- RS-232 Channel – bi-directional RS-232 serial port allows for connection of peripherals such as touch screens and bar code scanners.

Specifications

Function	VE8900R	VE8950R	VE8900T	VE8950T
Video Input				
Interfaces	N/A		1 x HDMI Type A Female (Black)	
Impedance	N/A		100 Ω	
Max. Distance	N/A		1.8 m	
Video Output				
Interfaces	1 x HDMI Type A Female (Black)		N/A	
Impedance	100 Ω		N/A	
Video				
Max. Data Rate	Average: 150 ~ 500Mbps			
Compliance	HDMI HDCP Compatible	HDMI (4K) HDCP Compatible	HDMI HDCP Compatible	HDMI (4K) HDCP Compatible
Max. Resolutions / Distance	Up to 1080p @ 100 m (Cat 5e / 6, point to point)	Up to 4K @ 100 m (Cat 5e / 6, point to point) *4K supported: 4096 x 2160 / 3840 x 2160 @ 30Hz (4:4:4)	Up to 1080p @ 100 m (Cat 5e / 6, point to point)	Up to 4K @ 100 m (Cat 5e / 6, point to point) *4K supported: 4096 x 2160 / 3840 x 2160 @ 60Hz (4:2:0) 4096 x 2160 / 3840 x 2160 @ 30Hz (4:4:4)
Audio				
Input	N/A		1 x HDMI Type A Female (Black) 1 x Mini Stereo Jack Female (Green)	
Output	1 x HDMI Type A Female (Black) 1 x Mini Stereo Jack Female (Green)		N/A	

Specifications

Function	VE8900R	VE8950R	VE8900T	VE8950T
Connector				
Unit to Unit	2 x RJ-45 Female		1 x RJ-45 Female	
Control				
IR	1 x Mini Stereo Jack Female (Black)			
RS-232	Connector: 1 x Terminal Block, 3 pole Baud Rate: 19200, Data Bits:8, Stop Bits: 1, no parity and flow control		Connector: 1 x Terminal Block, 3 pole Baud Rate: 19200, Data Bits:8, Stop Bits: 1, no parity and flow control	
USB	2 x USB Type A Female (Black)		1 x USB Type B Female (White)	
Power				
Connectors	1 x DC Jack (Black) with locking			
Consumption	DC 5V, 4.2W (without USB peripheral device loading)	DC 5V, 4.6W (without USB peripheral device loading)	DC 5V, 3.2W	DC 5V, 3.3W
Environmental				
Operating Temperature	0 - 40 °C			
Storage Temperature	-20 - 60 °C			
Humidity	0 - 80% RH, Non-Condensing			
Physical Properties				
Housing	Metal			
Weight	0.49 kg (1.08 lb)		0.50 kg (1.1 lb)	
Dimensions (L x W x H) with bracket	14.02 x 12.30 x 3.06 cm (5.52 x 4.84 x 1.2 in.)			
Dimensions (L x W x H) without bracket	13.60 x 10.10 x 2.96 cm (5.35 x 3.98 x 1.17 in.)			



Corporate Headquarters

ATEN International Co., Ltd.

3F., No.125, Sec. 2, Datung Rd., Sijhih District,
New Taipei City 221, Taiwan
Phone: +886-2-8692-6789 Fax: +886-2-8692-6767
<http://www.aten.com/global/en/>
E-mail: marketing@aten.com

America Region:

ATEN Technology Inc.

15365 Barranca Parkway, Irvine, CA 92618, U.S.A
Phone: +1-949-428-1111 Fax: +1-949-428-1100
<http://www.aten.com/us/en/>
E-mail: sales@aten-usa.com

ATEN New Jersey Inc.

220 Davidson Avenue, Suite 404, Somerset,
NJ 08873, U.S.A
Phone: +1-732-356-1703 Fax: +1-732-356-1639
<http://www.aten.com/us/en/>
E-mail: sales@aten-usa.com

EMEA Region:

ATEN Infotech N.V.

Mijnwerkerslaan 34, 3550 Heusden-Zolder, Belgium
Phone: +32-11-531543 Fax: +32-11-531544
<http://www.aten.com/eu/en/> E-mail: sales@aten.be

ATEN U.K. Limited

466 Malton Avenue, Slough SL1 4QU, U.K.
Phone: +44-1753-539-121 Fax: +44-1753-215-253
<http://www.aten.com/gb/en/> E-mail: sales@aten.co.uk

ATEN Poland Sp. z o. o.

ul. Daimlera 2, 02-460 Warszawa, Poland
Phone: +48-669-062-112
<http://www.aten.com/pl/pl/> E-mail: tomasz.kruszynski@pl.aten.com

ATEN Russia

Office 14212, No.14 Serebryakova proezd,
Moscow, Russia.
Phone: +7-495-134-2808
<http://www.aten.com/ru/ru/> E-mail: russia@aten.com

ATEN Info Iletisim Ltd.

Beştepe Mah. Yaşam Cad. 13-A / 76
Yenimahalle Ankara, Turkey
Phone: +90-312-284-00-27 E-mail: turkey@aten.com

Oceania Region:

ATEN ANZ Pty Ltd.

Suite 3. 19, 32 Delhi Road, North Ryde,
NSW 2113, Australia
Phone: +61-2-9114-9933 Fax: +61-2-8072-3723
<http://www.aten.com/au/en/> E-mail: sales@au.aten.com

Asia Pacific Region:

ATEN China Co., Ltd.

18/F, Tower A, Horizon International Tower, No.6,
Zhichun Road, Haidian District, Beijing, China 100088
Phone: +86-10-5255-0110 Fax: +86-10-8296-1318
<http://www.aten.com/cn/zh/> E-mail: sales@aten.com.cn

ATEN Japan Co., Ltd. Tokyo Headquarters

ATEN Bldg. 8-4, Minami-senju 3-chome, Arakawa-ku,
Tokyo 116-0003, Japan
Phone: +81-3-5615-5810 Fax: +81-3-3891-3810
<http://www.aten.com/jp/ja/> E-mail: info@atenjapan.jp

Osaka Branch

Awajimachi Dai-Building 3F
3-1-9, Awajimachi, Chuo-ku, Osaka-shi, 541-0047, Japan
Phone: +81-6-6229-5810 Fax: +81-6-6229-8810
<http://www.aten.com/jp/ja/> E-mail: info@atenjapan.jp

ATEN Korea Co., Ltd.

B-303, Gabeul Great Valley, 60-5, Gasan-dong,
Geumcheon-gu, Seoul, Korea, 153-801
Phone: +82-2-467-6789 Fax: +82-2-467-9876
<http://www.aten.com/kr/ko/> E-mail: sales@aten.co.kr

Atech PeriphSerals, Inc.

6F., No.133, Sec. 2, Datung Rd., Sijhih District,
New Taipei City 221, Taiwan
Phone: +886-2-8692-6969 Fax: +886-2-8692-6926
<http://www.aten.com/tw/zh/> E-mail: taiwan@aten.com

ATEN India Rep. Office

Unit 406, 4th Floor, Barton Center, M.G. Road,
Bangalore - 560001, India
Phone: +91-80-48517231
E-mail: South-Asia@aten.com

