

# USER'S MANUAL

## **3.5 INCH USB 2.0 HARD DISK BOX ENCLOSURE**



<u>Index</u>	<u>Page</u>
Introduction.....	2
Features and Specification.....	2
Requirements.....	2
Package contents.....	2
Hardware Installation.....	3
Software Installation.....	7

## Introduction :

It is 3.5 inch USB2.0 hard disk enclosure,it will offer an easy to carry Interface solution for user to add more storage and work with PC.

## Features and Specification :

### 1. USB INTERFACE:

- ▲ Interface standard: USB Ver.2.0
- ▲ USB connectors/cable: One USB B type connector and One USB A TO B Cable
- ▲ Data transfer rate: USB2.0:High Speed up to 480Mbps
- ▲ Power LED
- ▲ Activity LED
- ▲ Power switch for power turn on / off (optional)

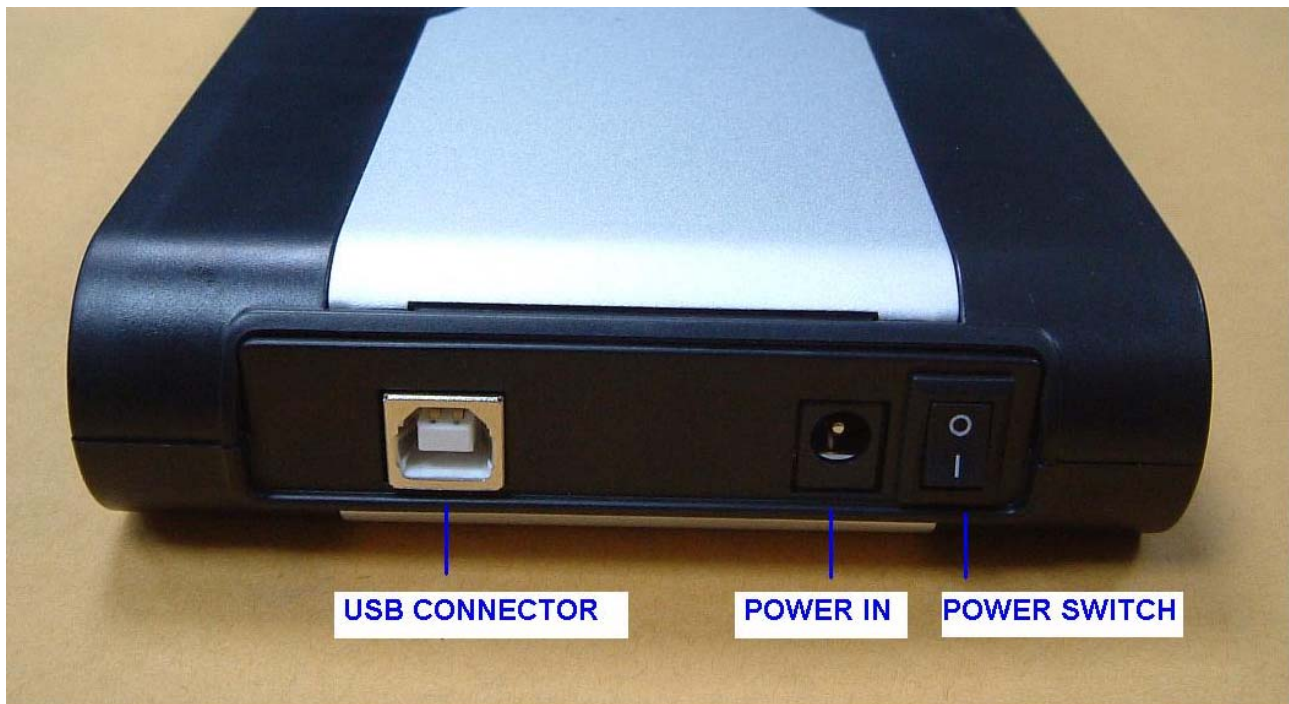
## Requirements :

- ✧ IBM or Compatible PC / Apple iMac.G4
- ✧ USB 2.0 Host or USB 2.0 HUB .
- ✧ Windows 2000, Windows XP, Windows ME or Windows 98SE operating system /Mac OS 9.x or 10.x

## Packing contents :

Item
3.5 INCH HDD BOX ENCLOSURE (With plinth)
USB A TO B CABLE
SCREWS SET
POWER ADAPTOR
CD DRIVER (WITH MANUAL)

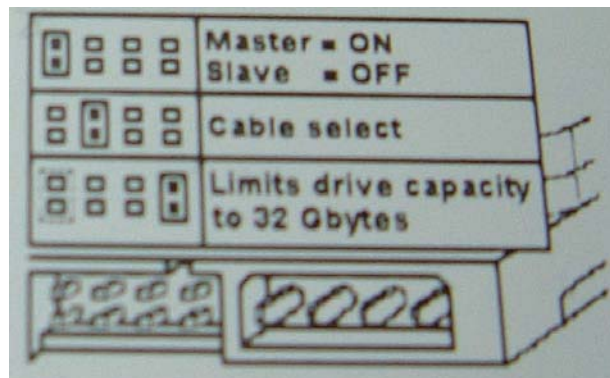
# Chapter 1



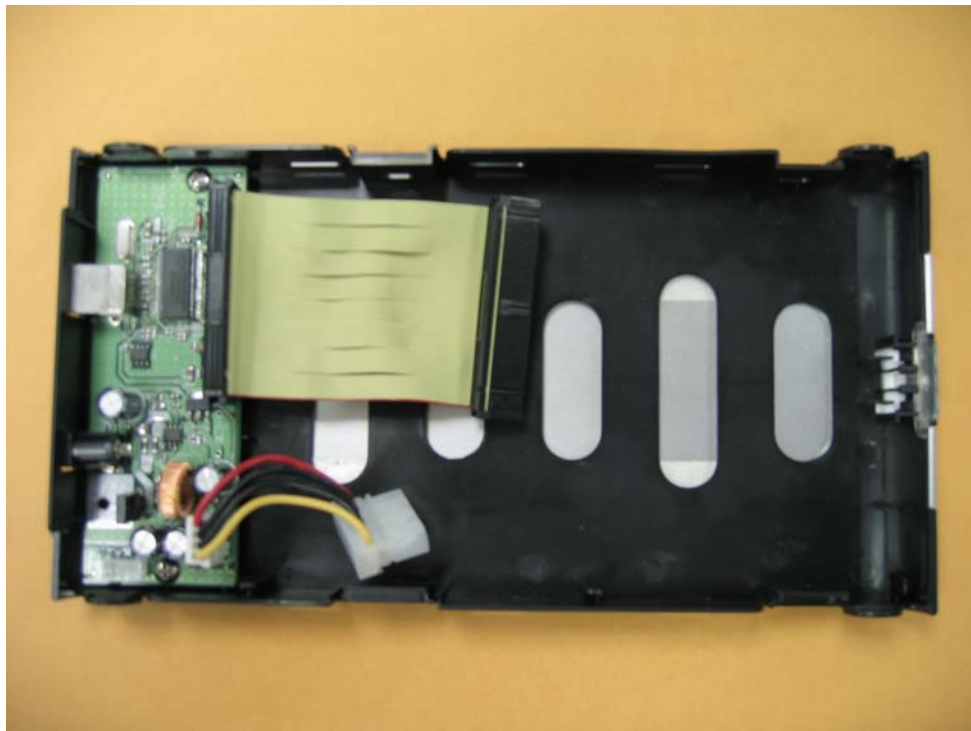
## Connectors view

### Hardware Installation :

**Notice:**First,please set up the jump for Master type in your HDD.



1. Open the Hard disk box enclosure.



2. Assemble 3.5"hard disk as below .





3.Screw up HDD as below.





4. Assemble the housing as below.



5. Close the case as below.



# Chapter 2

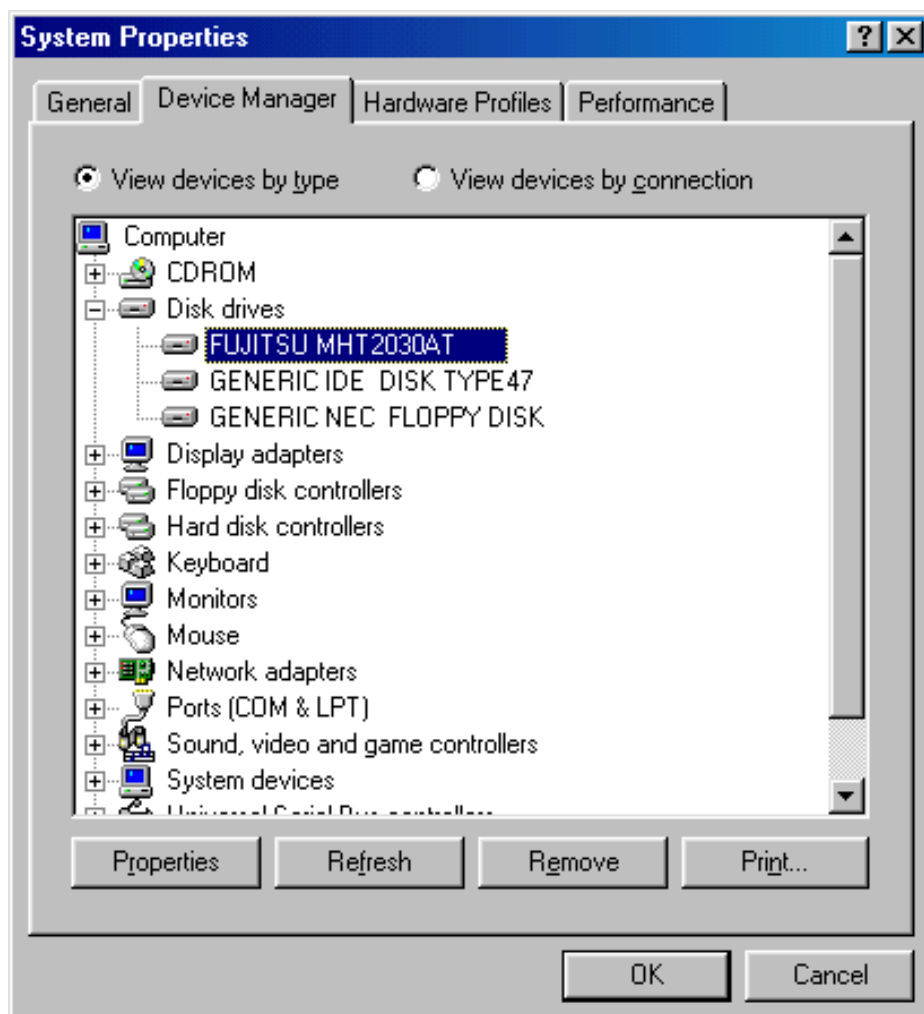
## Software Installation :

Windows XP, Windows 2000, Windows ME, Windows 98SE (You don't need to install driver under Win2000 or above) . The drivers supplied with this distribution are for Win98SE only. Please turn on your computer and plug-in your HDD box, windows will auto detect and appear an new icon.

**\*Windows ME : Please plug-in directly cable and power and follow the step 7 to setup as below.**

### **\*Windows 98SE driver Installation:**

1. Please insert CD into the CD-ROM
2. Please double click "Setup.exe" as below.
3. Please select "Next" to continue until it is final..
4. Please re-start your PC and plug in your HDD BOX .
5. Please click "Disk drivers" and select your Brand of HDD under "Device Manager " in "System Properties" as below.

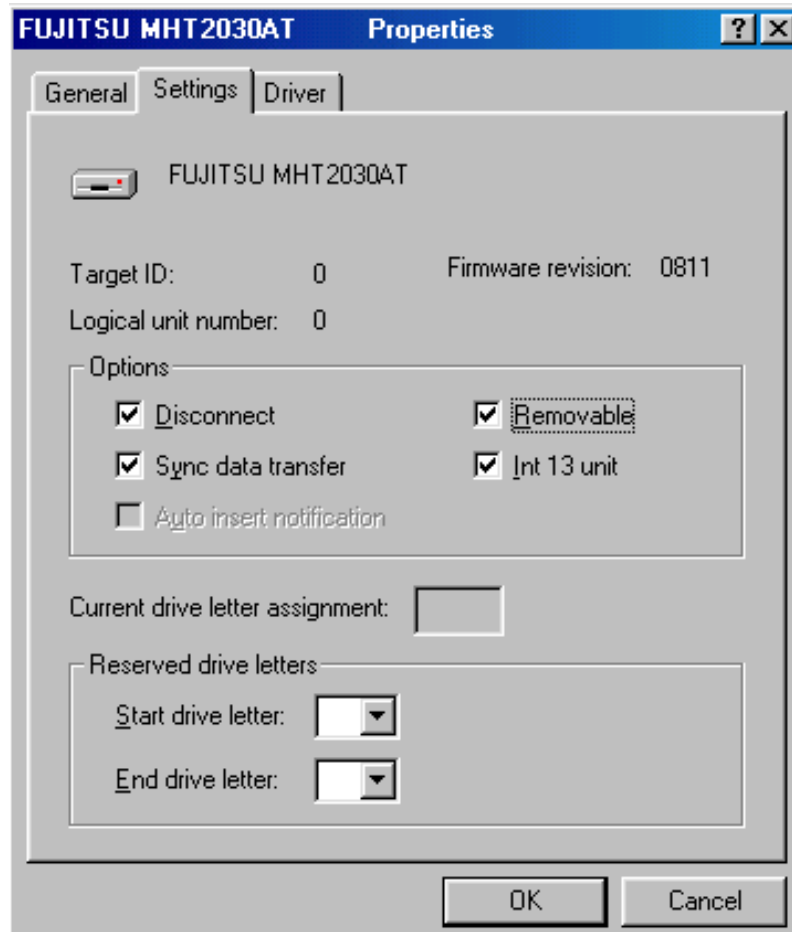




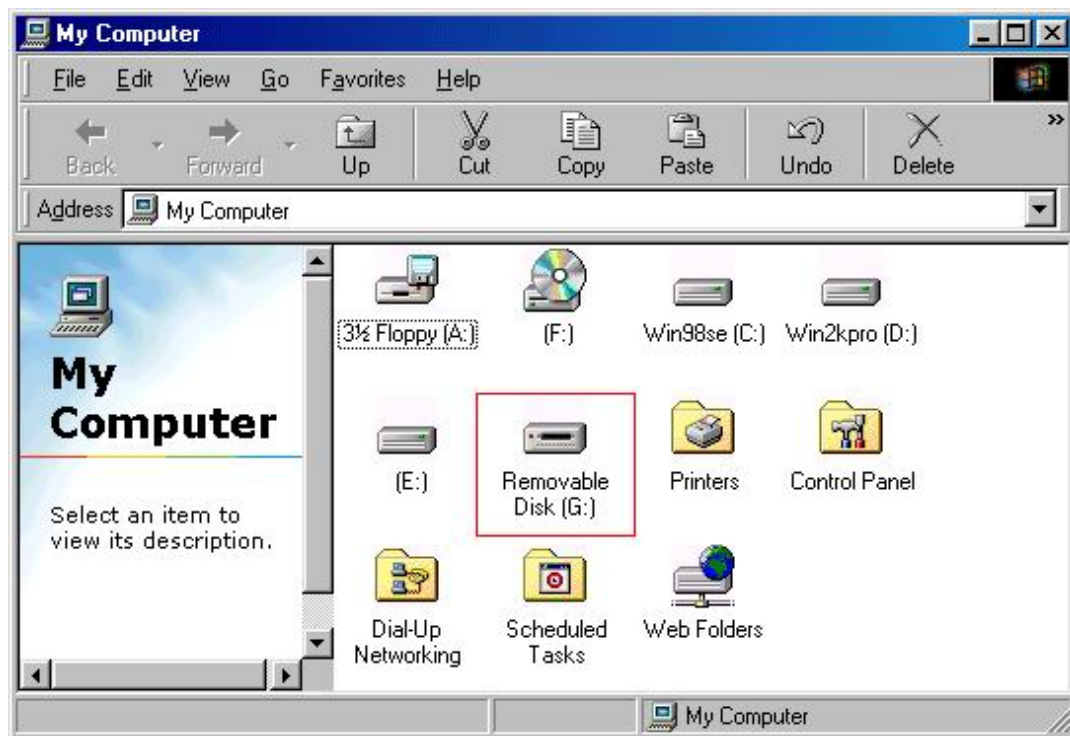
6. Please click “Setting” for install driver as below.



7. Please click “Removable” and click “OK”.

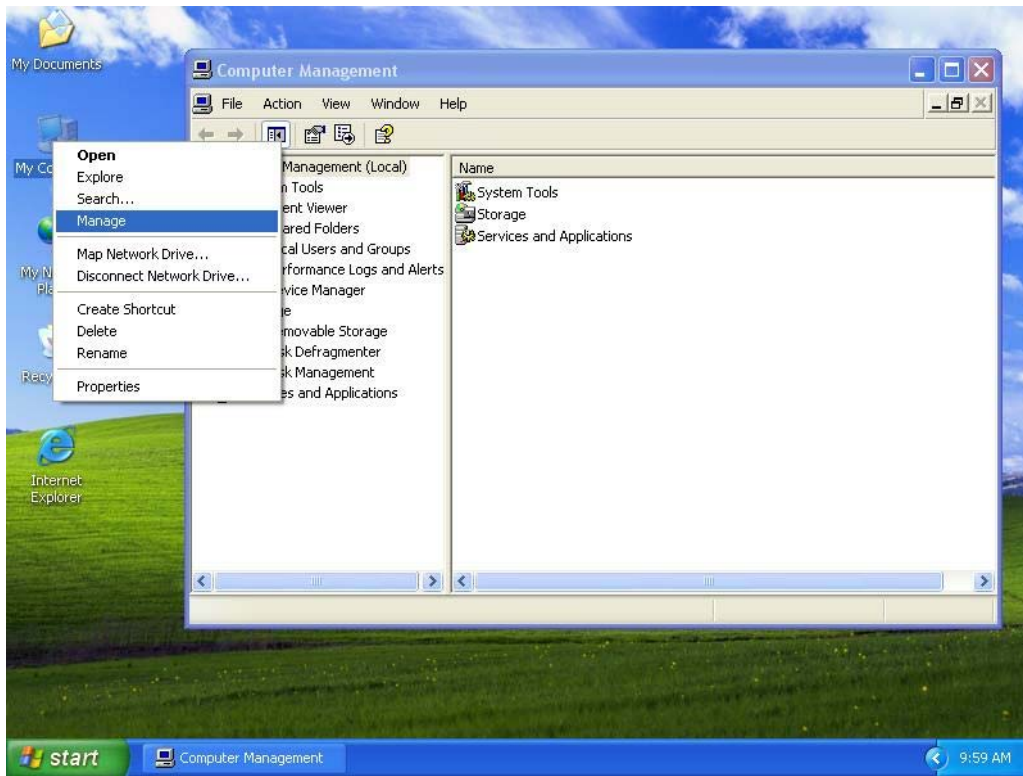


8. "My computer" will appear the "Removable Disk", please format your HDD if your HDD is be used at first.

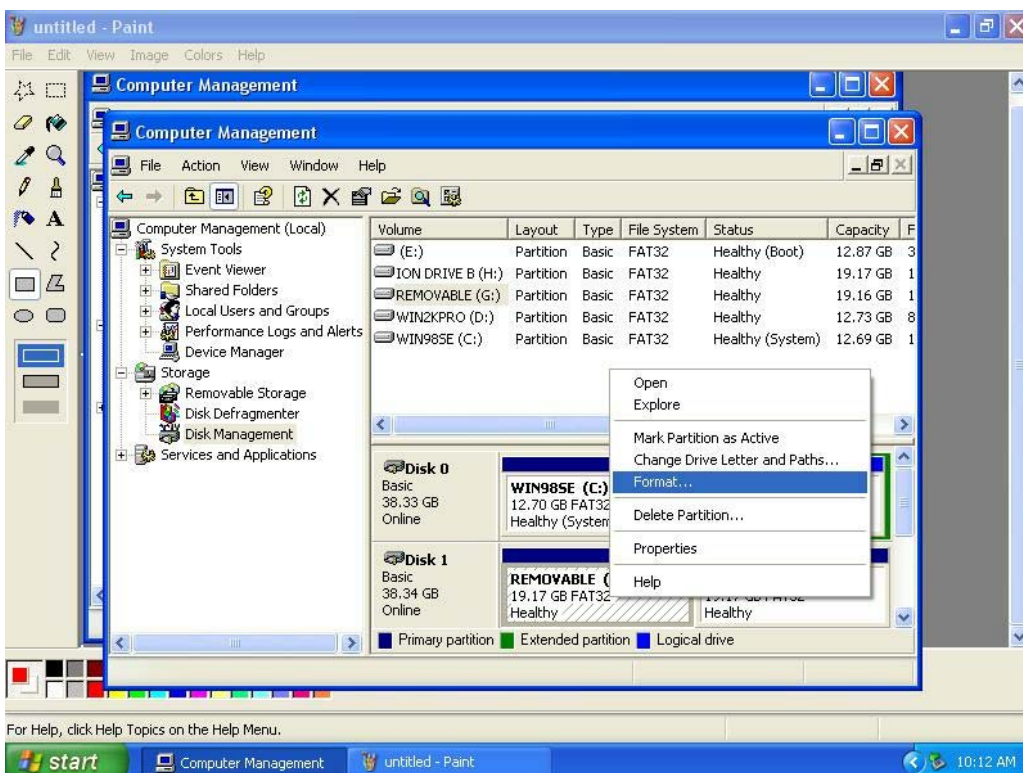


## Win2000 /XP Installation :

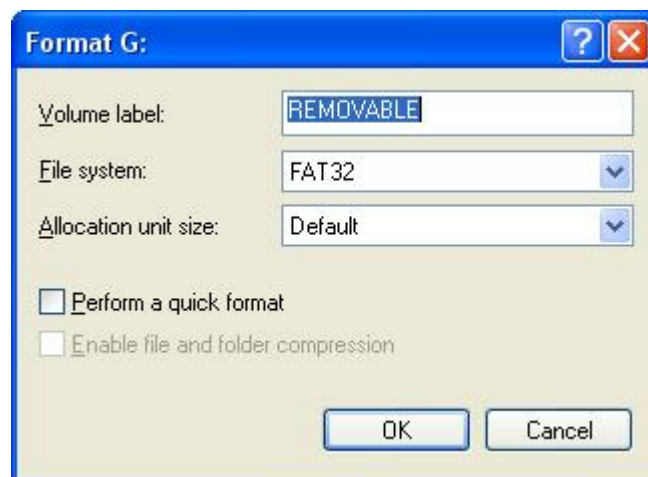
1. Please click “My Computer” and click “Manage” for initial your HDD when you use it first.



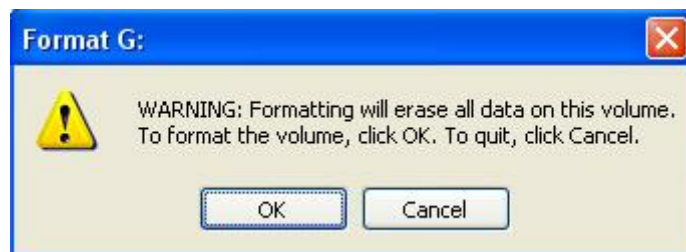
2. Please click “Disk Management” and enter and click “Removable Disk” to format HDD as below.



3. Please select “File System” and click “OK”.



4. Please click “OK”.



5. Please click “My computer”, and you can start to use “Removable Disk” as below.

