



Simply
Better
Connections





A Message from Kevin

Over the past 30 years, ATEN has been continuously creating innovative products while listening to our customers' needs. ATEN insists on becoming the trendsetter in every area we focus on, not only to create a competitive brand, but also to win over new customers with our reputation.

However, I believe the purpose of an enterprise is not only to create value, but, more importantly, create sustainable solutions that add continuous value to a community, resulting in a virtuous cycle that is safe for our planet.

“

”

Where success helps the world
succeed!

Kevin Chen
Chairman



Reading ATEN by the Numbers

#1

Global KVM
Market Leader

37

Years of
Excellence

1.7k

Employees
Worldwide

12

Subsidiaries and Growing

150M+

2016 Total Revenue

500+

Patents Awarded



Our Vision

Simply
Better
Connections





Our Mission

Sharing Infinite Possibility
Through Connective Technology





Milestone



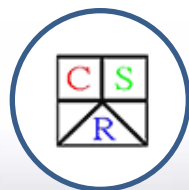
2007

ATEN expanded R&D scale,
established R&D HQ



2010

Professional A/V product line launched



2014

1st place - Taiwan Excellence in
Corporate Social Responsibility (CSR) Award



2015

1st place - in Europe and
Asia for KVM revenue

2003

ATEN listed on the Taiwan Stock
Exchange



1996

The first U.S. subsidiary is born



1990

ATEN brand products launched



1979

ATEN is established





Corporate Values



Integrity



Caring



Ambition



Novelty

Integrity with pragmatism

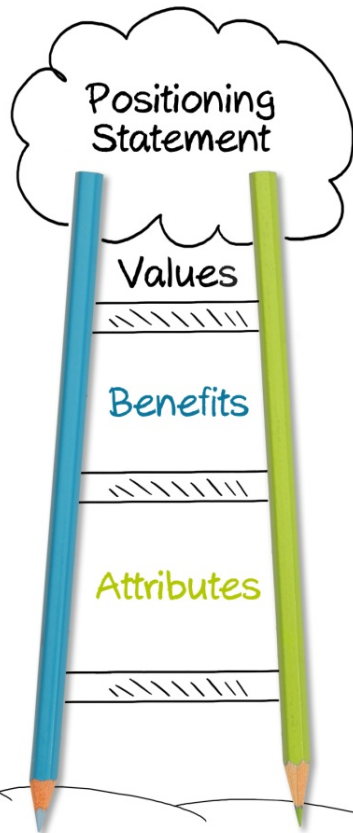
Caring with respect

Ambition with optimism

Novelty with value



A Trustworthy Partner



Promise	Persistence	Speed	Superior
Perfect solutions	A growing knowledge base	Worry-free service & support	Reliable R&D testing & successful case studies
✓ Comprehensive and up-to-date ATEN website.	✓ All-inclusive training programs & technical seminars.	✓ Complete FAE assistance	✓ Professionally and publicly-certified tests
✓ Tailor-made loyalty programs.	✓ Regular product & case studies updates.	✓ Well-trained, local ATEN technical support staff	✓ Worldwide success stories
		✓ Instant swap service	



Product Portfolio

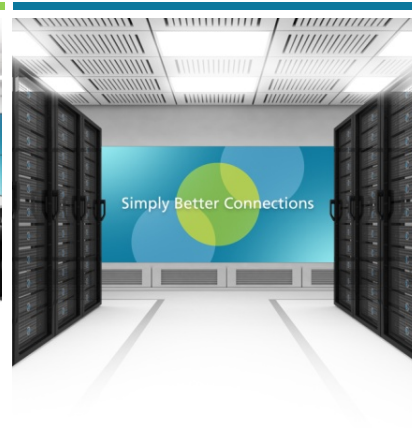
KVM



Professional A/V



Green Energy



Mobility & USB





Extensive R&D Capabilities



Management
Software

Software

OS/FW Design

HW/ME/ID Design

IC/FPGA Design



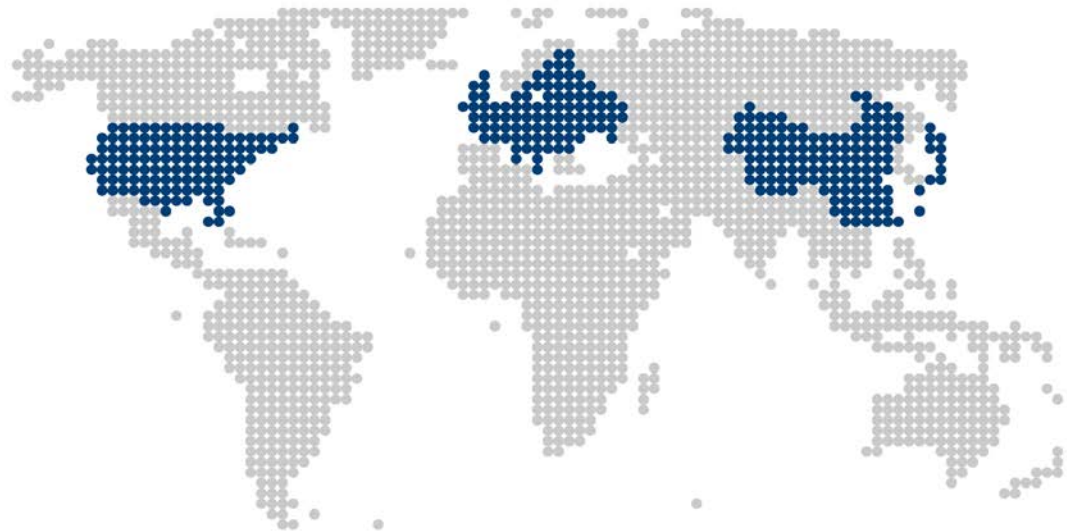
User-Centered
Design



Global Patent Portfolio

By the end of May 2016, ATEN's commitment to technological R&D resulted in

500+
Granted Patents





Recognition



In January 2015, a leading commercial survey organization, Interbrand, announced that ATEN was awarded a place their **2014 Taiwan Top 35 Global Brands.**

ATEN is currently the world's only publicly traded company in the KVM switch industry.



Worldwide Presence



**Corporate
Headquarters**
Taiwan

Asia-Pacific
China Subsidiary
Taiwan Subsidiary
Japan Subsidiary
Korea Subsidiary

Europe
Belgium Subsidiary
UK Subsidiary
Russia Office
Turkey Office

America
US Subsidiary (CA)
US Subsidiary (NJ)

Oceania
ANZ Subsidiary

**R&D /
Manufacturing**
Canada R&D
China R&D/Factory
Taiwan R&D/Factory

ATEN | ATEN Customer List

VISA



J.P.Morgan



SHARP



SONY





Awards



design
award
china

2007



red dot award 2015
winner interface design





Target Vertical Markets



Corporate



Education



Government



Hospitality



Manufacturing



Corporate // Video Conference Rooms

Simply
Better
Connections



ATEN | Simple Switch

Multi-Mode Control with One Click



Meeting



Presentation



Teleconference

ATEN's Professional A/V and Control System solutions work seamlessly together to achieve the simplism control.



Seamless Switch

Less Than **0.5** sec.





Education // Interactive Training Schools



Modern Classroom

ATEN's control systems allows the content sharing in many new and exciting ways, which transforms the classroom into an interactive and modern place to learn.



Seamless 4K Content Sharing

Industry's first 4K seamless switch solutions provide unprecedented clarity communications.





Government // Highway Control Centers



Centralized Management

ATEN Centralized Management software optimize work environments through centralized control.



Hardware & Software Security

ATEN solutions provide unwavering reliability and security compliant with FIPS 140-2 security standards.

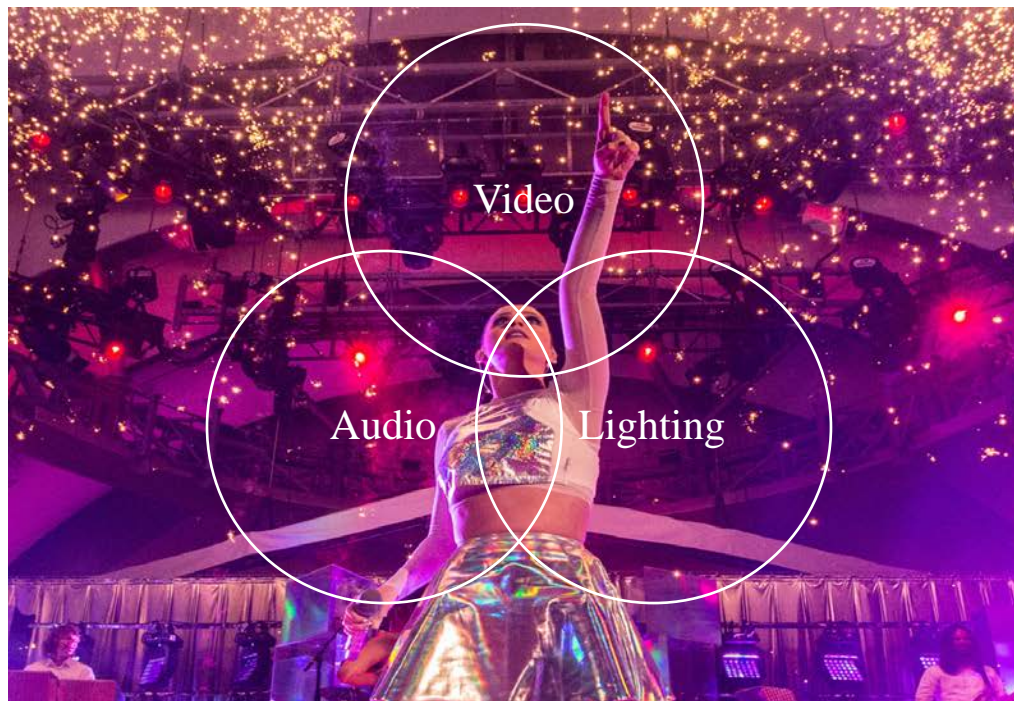




Hospitality // Centralized Venue Management

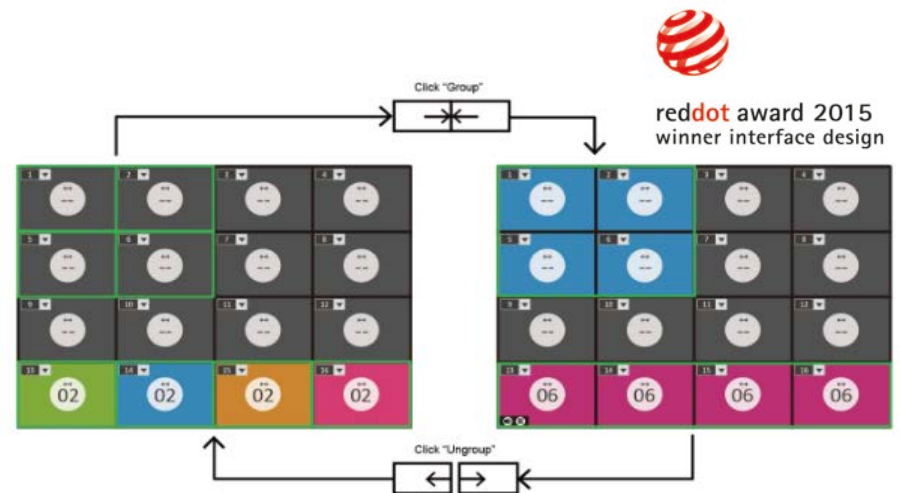


Simple Meets Spectacular



Intuitive Design

Easily master and control ATEN products using their user-centered design and intuitive interface.



Simplified Facility Management

With ATEN's integrated control solutions, you can manage everything from your mobile device.



Manufacturing // Remote Control Management



Human to Device Ratio



ATEN technologies help to facilitate remote, real-time monitoring of production lines with effortless data sharing for easy management.

Forward Thinking

ATEN KVM over IP matrix system embrace smart factory ideologies and Industry 4.0 trends, resulting in increased productivity and efficiency.





KVM Solutions



ATEN KVM Product Categories



KVM over IP



KVM Extenders



**LCD KVM
Switches**



**Desktop KVM
Switches**



**Rack KVM
Switches**



**Matrix KVM
Switches**



**Management
Software**



**KVM Modules &
Accessories**



Market of KVM Solutions

Banking & Finance



Retail



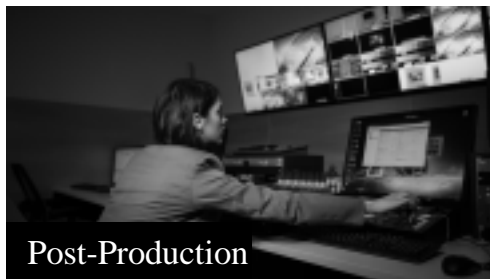
Government



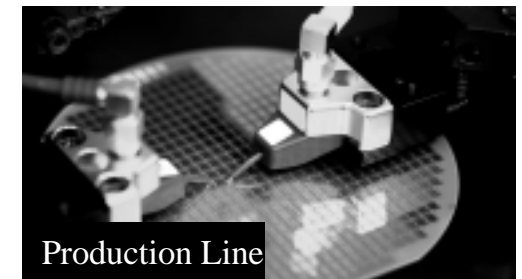
Power & Utilities



Broadcasting & Media



Manufacturing





Core KVM Products

KVM over IP Matrix System

KE Series

- **Delivers the Ultimate Flexibility**

The KVM over IP Matrix System delivers the ultimate flexibility for extending, controlling and monitoring access to multiple computers, in a multitude of ways, from any location on your network.

- **Adaptable to Fit Endless Variety of Work Environments and Workstation**

Control center, broadcasting, multimedia, manufacturing and more.





Core KVM Products

KVM Over IP Switch

KN8 Series

- Superior FHD Video Quality
- FIPS 140-2 level 1 Advanced Security Standard
- Ultra Fast Virtual Media Transmissions Speed
- Control Servers Remotely through an iPad





Professional A/V Solutions



Professional A/V Product Categories



Control System



**Modular Matrix
Switches**



**Video Matrix
Switches**



Video Switches



Video Splitters



Video Extenders



Video Converters



Accessories



Market of Professional A/V Solutions

Corporate



Meeting Room



Digital Signage

Education



Training Room



Digital Signage

Hospitality



Meeting Room



Digital Signage



Core Professional A/V Products

Video Matrix Switch

VM6404H

- **Industry's First 4K Seamless Switch –**

The 4x4 4K HDMI Matrix Switch with Scaler can support up to 4K@60Hz, HDMI2.0 and HDCP 2.2 and features seamless switching.

- **ATEN's Unique FPGA 4K Video Wall Scaler–**

Utilizing ATEN FPGA technology to unify various video input signals to optimum output 4K* resolution each output.

- **Easy-to-Use Web GUI –**

Allows you to create 8 connection profiles that can be customized into different video wall layouts.



*4K support both 4K UHD & DCI in 4K30 4:4:4 or 4K60 4:2:0



Core Professional A/V Products

Modular Matrix Switch

VM1600/3200

- **Seamless Switch –**

Provides continuous video streams, real-time switching, and stable signal transmissions regardless of the different input resolution.

- **Video Wall Integration with Scaler –**

Equipped with Video Wall functionality integrated with a scaler and FPGA design that ensures all input sources are processed at the same time.

- **Elastic Expandability –**

Easily expandable and accommodates a lineup of hot-swappable ATEN I/O boards.





Core Professional A/V Products

Control System

VK2100, VK6000 and ATEN Control System App

- **Control Mobility –**

The ATEN Control System provides centralized control of devices directly and effortlessly.

- **Expandable Device Database –**

This extensive library is expandable and manageable, suit in any installation.

- **Simplified Setup –**

ATEN Configurator software Simple profile setup in 4 easy configuration steps via intuitive GUI.





Green Energy Solutions



Green Energy Product Categories



**Metered-Ready
PDU**



Metered PDU



Switched PDU



**Outlet-Metered
PDU**



**Outlet Metered
Switched PDU**



Monitoring Device



**Energy & DCIM
Management
Software**



Accessories



Market of Green Energy Solutions

Transportation



Telecommunications



Education





Core Green Energy Products

Metered Thin Form Factor eco PDU

PE5T Series

- **Provide More Space and Enhanced Cooling Efficiency –**
ATEN's thin form factor PDUs' 5.6 cm width fits neatly into server racks.
- **Faster Maintenance –**
Easier access to equipment normally installed behind PDUs.



Core Green Energy Products

Outlet-Metered & Switched eco 1U PDU

PE8208

- **Ideal for Data Center IT Equipment –**
Contains 8 AC outlets and is available in various IEC or NEMA socket configurations.
- **Ensures Secure and Centralized Power Distribution –**
With a combination of eco Sensors Energy & DCIM Management Software.





Mobility & USB Solutions



Market of Mobility & USB Solutions

SOHO

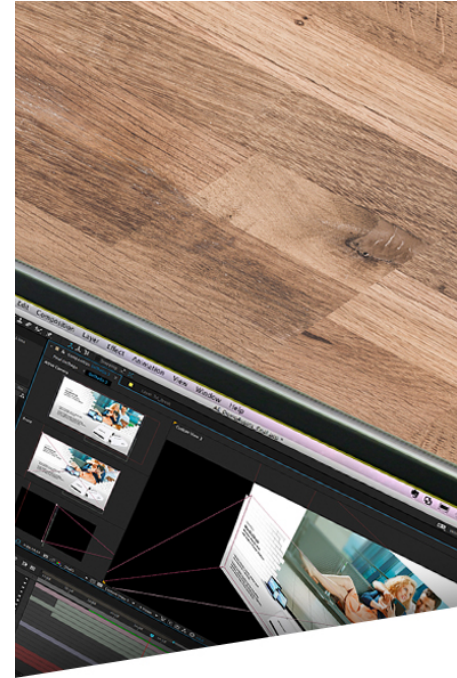


ATEN | Core Mobility & USB Products

Thunderbolt 2 Sharing Switch

US7220

- **World's First Thunderbolt 2 KVM Docking Station –**
Thunderbolt 2 KVM Docking Station transforms computers into complete, high-performance workstations.
- **2-Port Thunderbolt 2 KVM – Minimalistic Setup –**
Connect up to two independent Thunderbolt 2 enabled computers and switch between them with the push of a button.
- **Sleek Full-Featured Workstation –**
Connect up to 4 additional Thunderbolt 2 devices plus 1 Thunderbolt Monitor.





Core Mobility & USB Products

USB 3.0 Peripheral Sharing Device

US434

- **4-port Peripheral Sharing Device –**

The ATEN US434 allows users to share four USB devices between 4 different computers.

- **USB 3.0 Provides 5Gbps High-bandwidth Sharing –**

Perfect for high-bandwidth devices, such as USB docking stations and HD cameras.





Core Mobility & USB Products

Gamepad Emulator

UC3410

- **ACT (Agile Control Translator) Signal Conversion Technology**
- **PC-like FPS Gaming Experience - Fast and Accurate –**

The ATEN PHANTOM-S™ Gamepad emulator for the PS4 / PS3 / Xbox 360 / Xbox One allows you to easily become an outstanding PC or console first-person shooter player with customized keyboard and mouse gameplay.



Simply Better Connections



This file contains information that is for sole use of the intended recipient and may be confidential or privileged. Any unauthorized review, copying, disclosure, use or distribution is strictly prohibited.