

AT-AR370, Leased Line & Frame Relay Access With ISDN Support Router

AT-AR370, Leased Line and Frame Relay router with ISDN support



KEY FEATURES

See Feature Summary Pg. 3

INTERNET ACCESS

NAT and Extended NAT (ENAT) support unlimited LAN users for the cost of a single IP address while Dynamic IP address assignment and an integral DHCP server offer transparent IP address set-up.

REMOTE TELEWORKER SUPPORT

Up to two teleworkers may access the router simultaneously at speeds up to 115kbps using the external modem ports. Teleworkers may be authenticated using PAP/CHAP, while call back can be used to provide centralized billing.

WAN CONNECTIVITY

- The AT-AR370 supports synchronous links up to E1 (2.048Mbps) and T1 (1.544Mbps) speeds. All major interface types including RS232, X.21, RS-449 and V.35 are supported.
- Frame Relay operation to E1/T1 speeds is supported on the synchronous port, including provision for logical interfaces and congestion control based on Committed Information Rate (CIR).
- The Basic Rate ISDN interface supports full IP/IPX spoofing, together with dial-on-demand operation, ensuring that ISDN costs are kept to an absolute minimum.

MULTIPROTOCOL ROUTING

- RIP, RIP2 and OSPF offer flexible routing capabilities.
- IP, IPX, DECnet and AppleTalk routing is supported as standard, as well as transparent bridging.
- IP Multihoming offers flexible LAN/WAN subnetting.
- L2TP enables tunneling of non-IP traffic (e.g. IPX) across low-cost Internet links.

SECURE

- Sophisticated Paladin Stateful Inspection Firewall for iron-clad session security.
- Hardware based DES and Triple DES encryption offer ultra-secure data transmission.
- Designed to the IETF IPSEC RFC's & ISAKMP.
- PAP, CHAP, RADIUS & TACACS support.
- IP, IPX and bridge filtering.

HARDWARE DATA COMPRESSION OPTION

- Standard software compression includes VJC Header, STAC and Predictor.
- For line speeds above 64kbps, a dedicated hardware based data compression module offers up to 8:1 compression using STAC.
- Hardware and software STAC compression fully interoperable.

TRAFFIC SHAPING AND QUALITY OF SERVICE (QOS)

- Advanced traffic shaping features such as RSVP (Resource reSerVation Protocol) and BACP (Bandwidth Allocation Control Protocol) ensure support for future multimedia applications.
- Policy Routing allows data to be routed based on traffic type (e.g. WWW, FTP, source/destination etc.).
- Prioritization of IP packets for reduced network delay.

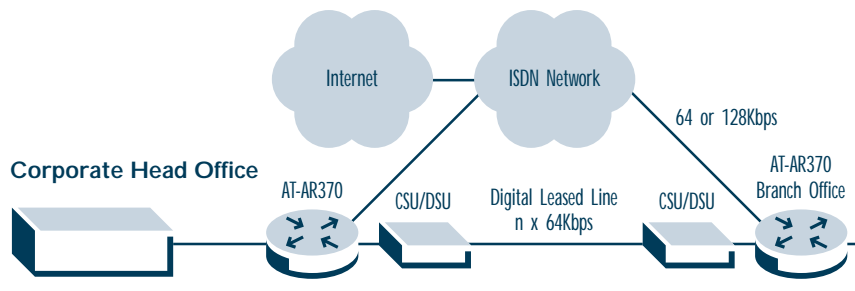
CONFIGURATION AND MANAGEMENT

- Standard configurations are set up in minutes using the Browser-based WEBSTART configuration utility
- The Secure Shell (SSH) package for Windows provides authenticated and encrypted secure remote management. SSH clients are also available from third parties.
- SNMP, MIB II and Enterprise MIB are supported.

AT-AR370, Leased Line & Frame Relay Access With ISDN Support Router

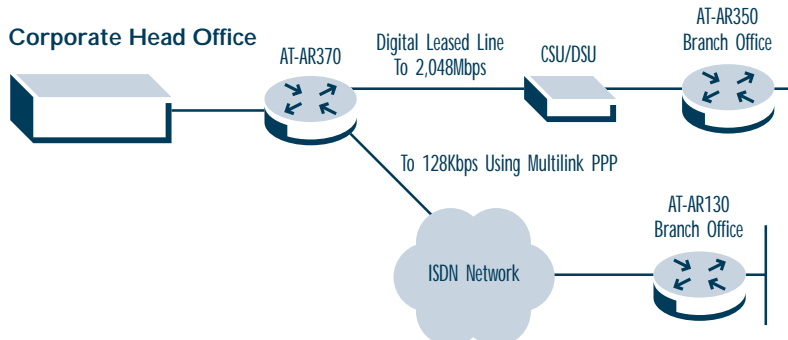
CORPORATE NETWORK BACKUP AND INTERNET ACCESS USING ISDN

- Instant ISDN backup to 128kbps in the event of leased line failure. With dial on demand for cost saving.
- Automatically provide additional capacity-on-demand for bandwidth hungry applications, using Multilink PPP.
- Use the same ISDN line to provide high speed, dial-on-demand access to the Internet.



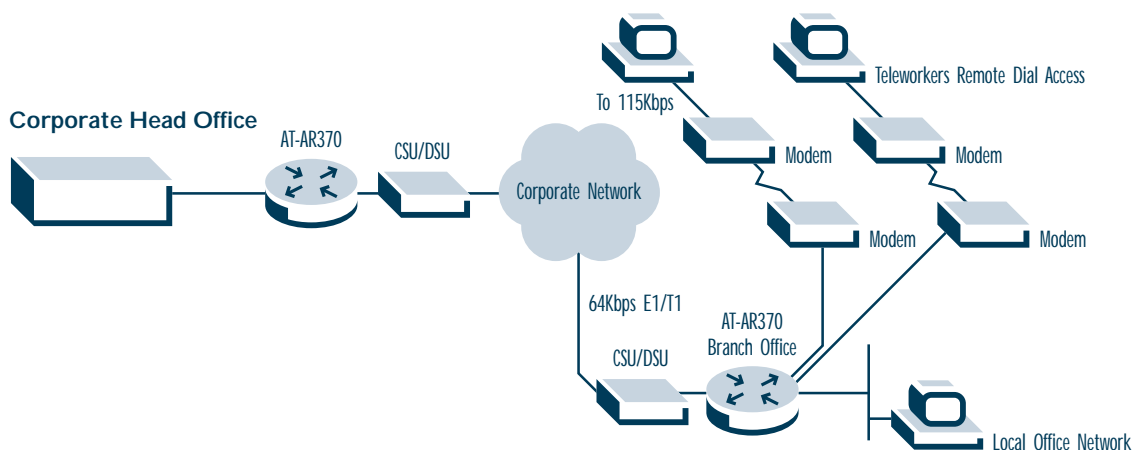
MIXED LEASED LINE AND ISDN CONNECTIVITY IN THE CORPORATE NETWORK

- Connect to digital Leased Lines and ISDN at the same time, to support mixed service remote sites.
- Routing of IP, IPX, AppleTalk and DECnet for multiprotocol networks.
- VPNet option provides Hardware DES and Triple DES Encryption for secure data transfer.



TELECOMMUTING AND HOME-WORKER SUPPORT

- Remote Teleworkers dial-up local office to access the corporate network saving on long distance call charges.
- Secure access with PAP/CHAP authentication and Callback for centralized billing.
- Filtering provides further access control to sensitive LAN resources.



AT-AR370, Leased Line & Frame Relay Access With ISDN Support Router

POWER CHARACTERISTICS

Input Voltage 100-240VAC, 50-60Hz, 10W
Autosensing internal supply

PHYSICAL CHARACTERISTICS

Dimensions 27cm x 20cm x 5cm
10.6" x 7.75" x 2"
Weight 1.7kg (3.74lbs)

ENVIRONMENTAL CHARACTERISTICS

Operating Temp. 0°C to 40°C (32°F to 108°F)
Relative Humidity 10 - 95% noncondensing

ELECTRICAL/MECHANICAL APPROVALS

Electromagnetic Emissions:
FCC part 15 class A
EN55022 class B
EN50082-1

Safety:
UL, CSA, TUC, CE
EN60950
EN41003

HARDWARE FEATURES

Synchronous Interface	1
ISDN BRI (u)	1
10Mbps Ethernet	1
Asynchronous Interface (RS232)	2
Mini Accelerator Card Slot	1

FEATURE SUMMARY

Dial-up Networking

Call Line ID
Dial-on-Demand
CLI Callback
MPP/BACP/BAC/AODI
SYNC upto 2 Mbps

Leased Line LAN Protocols

IP
IPX/SPX
AppleTalk
IPX/SPX Spoofing
Static Routes
RIP

Routing Protocols

OSPF
Frame Relay
X.25
DecNetIV

WAN Protocols

Remote Access Dial-in Support

Asynchronous Serial Ports
with Routing Support
Spanning Tree Bridge
STAC Compression
IP Multihoming
Dynamic IP Assignment
DHCP

Lan Bridging Compression

IP Address Management

Authentication

PAP/CHAP Authentication
RADIUS/TACACS Authentication
NAT Network Address Translation
Packet Filtering
L2TP Access Concentrator
L2TP Network Server
Paladin Stateful Inspection Firewall
Hardware DES Encryption (optional)
Triple DES Encryption (optional)

Tunneling & Security

IPSec
IKE
SSH Secure Shell for Remote Mgt
Traffic Shaping and QoS
Packet Priority
RSVP
Console Port
Command Line Interface (CLI)
Telnet
Web Browser
SNMP

Configuration & Management

ORDERING INFORMATION

AT-AR370-xx

Leased line and Basic Rate ISDN access router

Where xx = 10 for U.S. power cord
20 for no power cord
30 for U.K. power cord
40 for Australia power cord
50 for Europe power cord

AT-AR300 Series Options

AT-AR010 EMAC
Provides hardware-based DES
and 3DES encryption

AT-AR011 ECMAC
Provides hardware-based DES
and 3DES encryption,
hardware-based compression

AT-AR012 CMAC
Provides hardware-based STAC compression

AT-AR013 3DES
Triple DES encryption (software option)

AT-AR014 Firewall
Stateful inspection firewall (software option)

Product Range: Allied Telesyn's long-term focus on price/performance networking has made it a market-leading provider of LAN, WAN and MAN network systems. Advanced Layer 3 switch and router technology perfectly complements its traditional Layer 2 switch, hub, adapter card and media conversion capabilities.

USA Corporate Headquarters: 19800 North Creek Pkwy, Suite 200, Bothell, WA 98011, USA • Tel: 800.424.4284 • Fax: 425.481.3895

European Headquarters: Kon. Wilhelminaplein 13/2.10.03, 1062 HH Amsterdam, Netherlands • Tel: +31 20-346 07 00 • Fax: +31 20-346 07 10

www.alliedtelesyn.com

© 2001 Allied Telesyn International Corp. All rights reserved. Information in this document is subject to change without notice.
All company names, logos, and product designs that are trademarks or registered trademarks are the property of their respective owners.

617-00311-00 Rev. A



Allied Telesyn
Simply connecting the IP world