

Consolidation Point Blocks

Additional specifications for horizontal cabling in areas with moveable furniture and partitions have been included in TIA/EIA-568-B.1. Consolidation points are an interconnection between the telcom room to the telcom outlet. Using consolidation points, new wiring for a workstation in an open office environment need extend only as far as the consolidation point, not all the way back to the telecommunication room. This provides for increased flexibility and economy when workstations require frequent re-configuration.



P5E12U

See page T14 in the Technical Section for installation guidelines.



ORDER INFORMATION

NEXTSPEED® Category 6 Consolidation Point Block

This Category 6 12-Port 89D panel provides the ideal solution when a consolidation point is required in Hubbell's NEXTSPEED 6 channel solution. This Category 6 block features a uniquely engineered PCB adapter, designed to exceed Category 6 ANSI/TIA/EIA-568-B.2-1 component specifications. The supplied 89D panel provides for easy wall mounting and allows panel to be inverted and securely fastened for easy termination. This universal wired panel is supplied with labeling for T568B wiring, but can be easily be converted to T568A with a simple flip of the universal wiring label.



Description	Catalog No.
12-port, universal wired, 89D consolidation point block	P612U

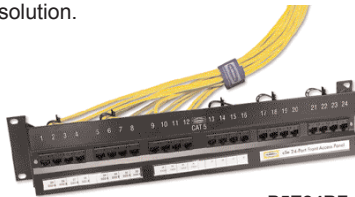
SPEEDGAIN™ Category 5e Consolidation Point Block

The Category 5e, 12-port 89D patch panels meet and exceed ANSI/TIA/EIA-568-B.2 Category 5e component specifications to 100MHz. The 12-Port Category 5e 89D PCB adapter module is mounted to a ridged front panel to allow simple wall mounting to supplied 89D type bracket. This 89D bracket allows the panel to be inverted and securely fastened for easy termination. These panels are ideal as a consolidation point in Hubbell's Category 5e channel or as a cross connect for small installations not large enough to warrant a relay rack.

Description	Catalog No.
12-Port Category 5e, T568B, 89D consolidation point block	P5E12B
12-Port Category 5e, Universal, 89D consolidation point block	P5E12U

Front Access Patch Panels

Hubbell offers a complete range of easy-to-use front access cross connect solutions. The 12- and 24-port front access panels offer a unique design that allows access to both modular jacks and IDC connectors from the front. Front access panels are typically used in small-scale applications where space is limited and front access is necessary. These panels are an ideal consolidation point and MUTOA solution.



P5E24BF



P5E12BF



P5E48BF



ORDER INFORMATION

Category 5e Front Access Panels

These front access panels provide complete front access for termination and patching. The mounting brackets of the 24-port panel accommodate both wall and 19" rack mounting.

Delivery:	24-port Front Access Panel	12-port Front Access Panel
	1 patch panel	1 block
	1 cover with mounting hardware	1 removable cover
	1 label kit	1 89D bracket
	2 reversible mounting brackets	
	4 rack mounting screws + washers	

Wiring	Ports	Height	Width	Depth	Catalog No.
T568B	12	2.5" (64)	10" (254)	1.5" (38)	P5E12BF
T568A	12	2.5" (64)	10" (254)	1.5" (38)	P5E12AF
T568B	24	3.5" (89)	19" (483)	1.5" (38)	P5E24BF
T568A	24	3.5" (89)	19" (483)	1.5" (38)	P5E24AF

Category 6/5e Hinged Fold-Down Panels

Our hinged fold-down panels offer an alternative to standard wall mount brackets. The cable management panel below the 48-port patch panel acts as a bench supporting the panel during termination. The rack mount version contains a 48-port patch panel hinged to the cable management panel for direct attachment to a relay rack or cabinet and does not include a wall mount bracket.

Delivery:	1 48-port hinged patch panel
	1 3.5"H cable management panel
	1 Wall bracket with side hinge (with side and rear cable entry) - wall mount only

Wiring	Style	Ports	Height	Width	Depth	Category	Catalog No.
T568B	Wall	48	7.0" (177)	19" (483)	1.5" (38)	5e	P5E48BF
T568B	Rack	48	7.0" (177)	19" (483)	1.5" (38)	5e	P5E48BF19
Universal	Wall	48	7.0" (177)	19" (483)	1.5" (38)	5e	P5E48UF
Universal	Rack	48	7.0" (177)	19" (483)	1.5" (38)	5e	P5E48UF19
Universal	Wall	48	7.0" (177)	19" (483)	1.5" (38)	6	P648UF
Universal	Rack	48	7.0" (177)	19" (483)	1.5" (38)	6	P648UF19

