

User's Manual



PCI Express 10G Ethernet Adapter

▶ ENW-9801



Trademarks

Copyright © PLANET Technology Corp. 2013.

Contents subject to which revision without prior notice.

PLANET is a registered trademark of PLANET Technology Corp. All other trademarks belong to their respective owners.

Disclaimer

PLANET Technology does not warrant that the hardware will work properly in all environments and applications, and makes no warranty and representation, either implied or expressed, with respect to the quality, performance, merchantability, or fitness for a particular purpose.

PLANET has made every effort to ensure that this User's Manual is accurate; PLANET disclaims liability for any inaccuracies or omissions that may have occurred.

Information in this User's Manual is subject to change without notice and does not represent a commitment on the part of PLANET. PLANET assumes no responsibility for any inaccuracies that may be contained in this User's Manual. PLANET makes no commitment to update or keep current the information in this User's Manual, and reserves the right to make improvements to this User's Manual and/or to the products described in this User's Manual at any time without notice.

If you find information in this manual that is incorrect, misleading, or incomplete, we would appreciate your comments and suggestions.

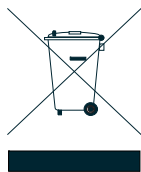
FCC Warning

This equipment has been tested and found to comply with the limits for a Class B digital device, pursuant to Part 15 of the FCC Rules. These limits are designed to provide reasonable protection against harmful interference when the equipment is operated in a commercial environment. This equipment generates, uses, and can radiate radio frequency energy and, if not installed and used in accordance with the Instruction manual, may cause harmful interference to radio communications. Operation of this equipment in a residential area is likely to cause harmful interference in which case the user will be required to correct the interference at whose own expense.

CE Mark Warning

This is a Class B product. In a domestic environment, this product may cause radio interference, in which case the user may be required to take adequate measures.

WEEE Warning



To avoid the potential effects on the environment and human health as a result of the presence of hazardous substances in electrical and electronic equipment, end users of electrical and electronic equipment should understand the meaning of the crossed-out wheeled bin symbol. Do not dispose of WEEE as unsorted municipal waste and have to collect such WEEE separately.

Revision

User's Manual on PLANET 10Gbps SFP+ PCI Express Server Adapter

FOR MODEL: ENW-9801

REVISION: 2.0 (September 2013)

Part No.: EM-ENW9801_2.0 (2080-A14100-000)

Table of Contents

CHAPTER 1 INTRODUCTION.....	5
1.1 Package Contents	6
1.2 Features	6
1.3 Gathering Tools and Documentations	6
CHAPTER 2 HARDWARE INSTALLATION	7
2.1 LED Definition	7
2.2 Hardware Installation.....	8
CHAPTER 3 DRIVER INSTALLATION.....	9
3.1 Installing Driver on Windows 7 / Server 2008.....	9
3.2 Installing Driver on Windows 8 / Server 2012.....	14
CHAPTER 4 SPECIFICATIONS	20

Chapter 1 Introduction

Thank you for purchasing PLANET ENW-9801 PCI Express 10 Gigabit Ethernet adapter. It supports x4, x8, x16 PCI Express interface. The 10 Gigabit Ethernet adapter provide a highly cost-effective solution to upgrading to the 10 Gigabit network with your existing Ethernet infrastructures.



Next Generation Server Adapter for growth and expansion of networking environments

The ENW-9801 PCI Express 10G Ethernet adapter is designed to address high-performance system application requirements. With the innovative PCI Express Bus Architecture, the ENW-9801 provides better performance than the network cards based on 32/64bit PCI architecture. It provides the best solution for one of the major issues of Server Farm Networks - communication speed. Ten times faster than the existing 1000Base-SX/LX solutions, PLANET ENW-9801, designed to connect your servers and workstations, guarantees extremely high throughput and excellent signal quality.

10 Gigabit Performance Boosts Network Traffic

PLANET ENW-9801 Single-Port 10 Gigabit Ethernet server adapter is an optimal solution for Ethernet applications by providing low-power budgets and small form factor. It offers simple integration into any PCI Express x8 server slot via one SFP+ slot. The onboard controller featured on the ENW-9801 integrates embedded technology and a 10GbE MAC into a single chip that offers up to 10Gbps of network throughput. PLANET Network solution greatly reduces the TCP/IP packet processing tasks of the server's CPU by performing enhanced data-handling algorithms, thereby providing nearly 10Gb line speed performance with the simplicity of a conventional Network Interface Card (NIC).

1.1 Package Contents

Make sure your package contains the following items:

- 1 x ENW-9801 10 Gigabit Ethernet Adapter (w/long Profile Bracket)
- 1 x Quick Installation Guide
- 1 x CD-ROM (Including this User's Manual / Quick Installation Guide / Driver)
- 1 x Low Profile Bracket

If any of these are missing or damaged, please contact your dealer immediately. If possible, retain the carton including the original packing material, and use them again to repack the product in case there is a need to return it to us for repair.

1.2 Features

- PCI Express rev 2.0 specification x4 Interface
- IP, TCP, UDP checksum offloading
- IEEE 802.1Q VLAN ID Tagged / IEEE 802.1q Qos
- 16K Jumbo Frame Size
- IEEE 802.3x Full-Duplex Flow Control
- Complies with Microsoft and Linux Platform

1.3 Gathering Tools and Documentations

To install the ENW-9801 10 Gigabit Ethernet adapter, you need the following items:

- A suitable screw driver
- Your operating system documentation
- Your system unit documentation, including any service documentation

Chapter 2 Hardware Installation

2.1 LED Definition

Below are the pictures of the faceplates of the ENW-9801, consisting of one LED: Link / ACT. Table 2-1 explains the function and state of the LED.

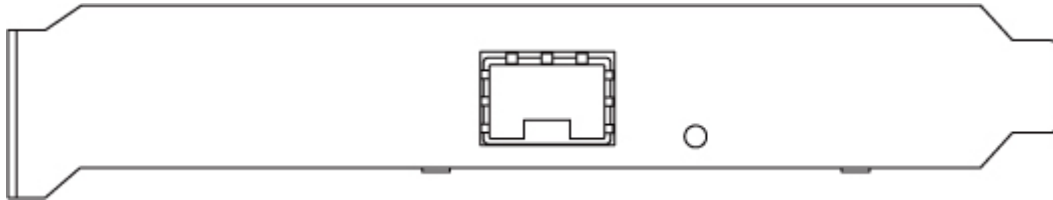


Figure 1: Long Profile Bracket of ENW-9801

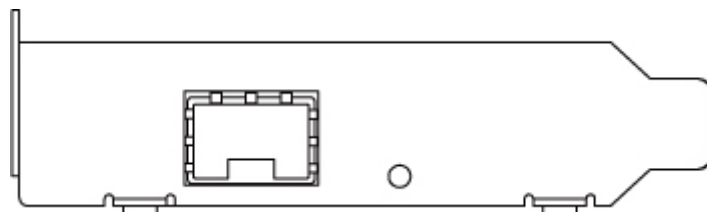


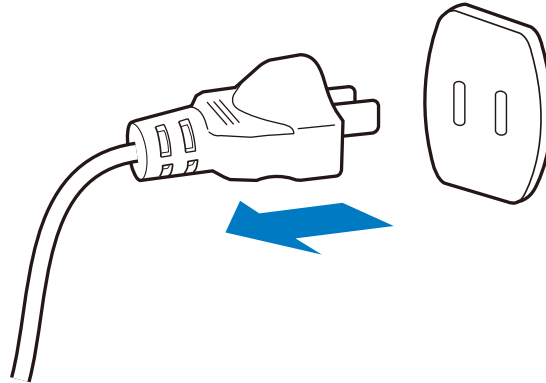
Figure 2: Low Profile Bracket of ENW-9801

LED	Color	Description
LNK/ACT	Green	When it lights, it indicates a functional network link through the port. When it blinks fast, it indicates data transmit and receive through the port.

Table 2-1: Descriptions of the ENW-9801 LED

2.2 Hardware Installation

Step 1: Please turn off your PC.

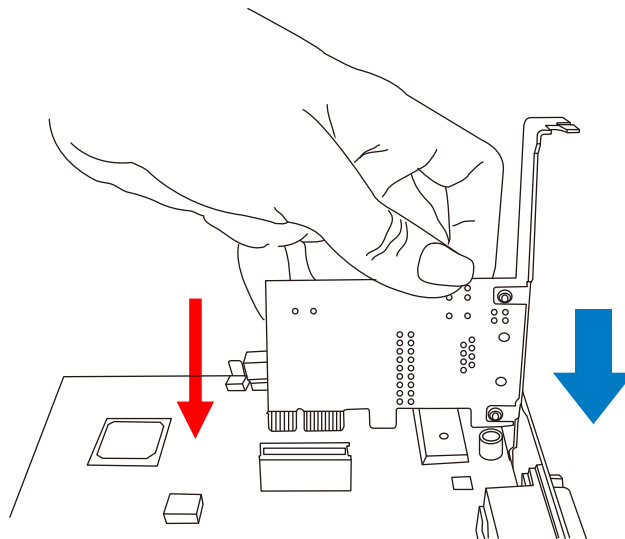


Step 2: Remove any metal decorations from your hands and wrists.

Step 3: Remove the cover from your PC.

Step 4: Locate an empty PCI Express slot and remove the corresponding back plate. Save the screw for use in Step 6.

Step 5: Carefully insert the 10 Gigabit Ethernet Adapter into the chosen slot and press firmly with proper push to ensure it is fully seated in the slot.



Step 6: Secure the 10 Gigabit Ethernet Adapter with the screw you saved in step 4.

Step 7: Replace the PC cover.

Step 8: Power on your PC and refer to the next section to install driver.

Chapter 3 Driver Installation

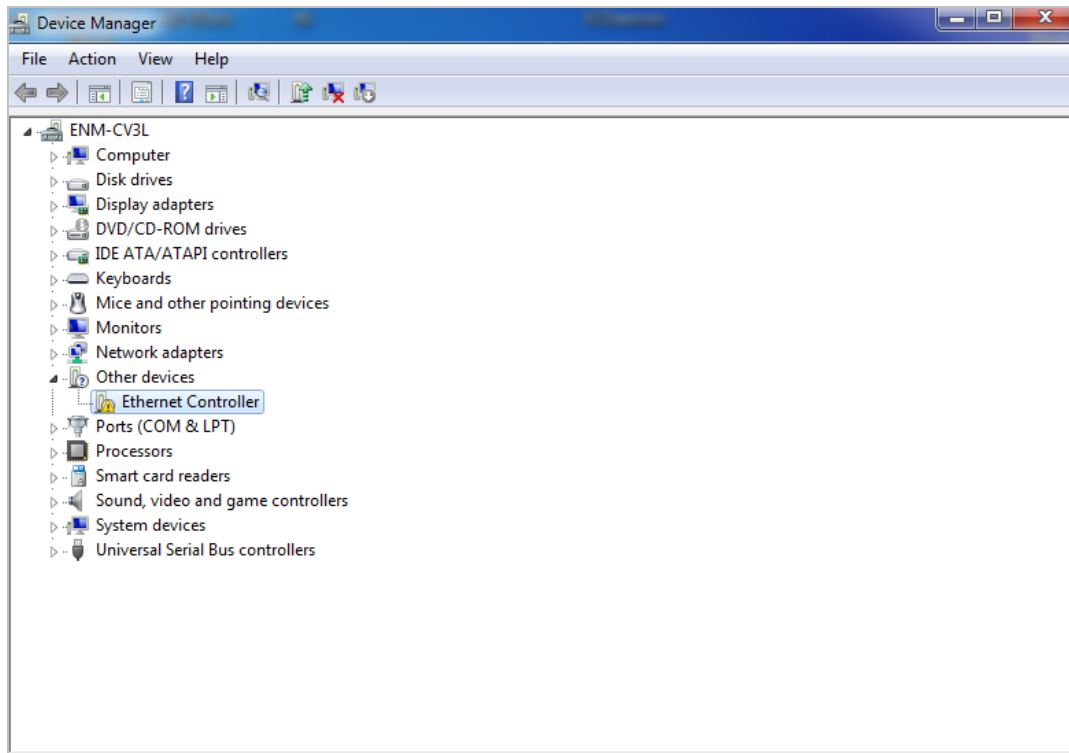
A device driver must be installed before your ENW-9801 can be used with your computer. This chapter describes how to install the driver for various operating systems. Before you begin the driver installation process, make sure you have the installation disks for your computer's operation system.

3.1 Installing Driver on Windows 7 / Server 2008

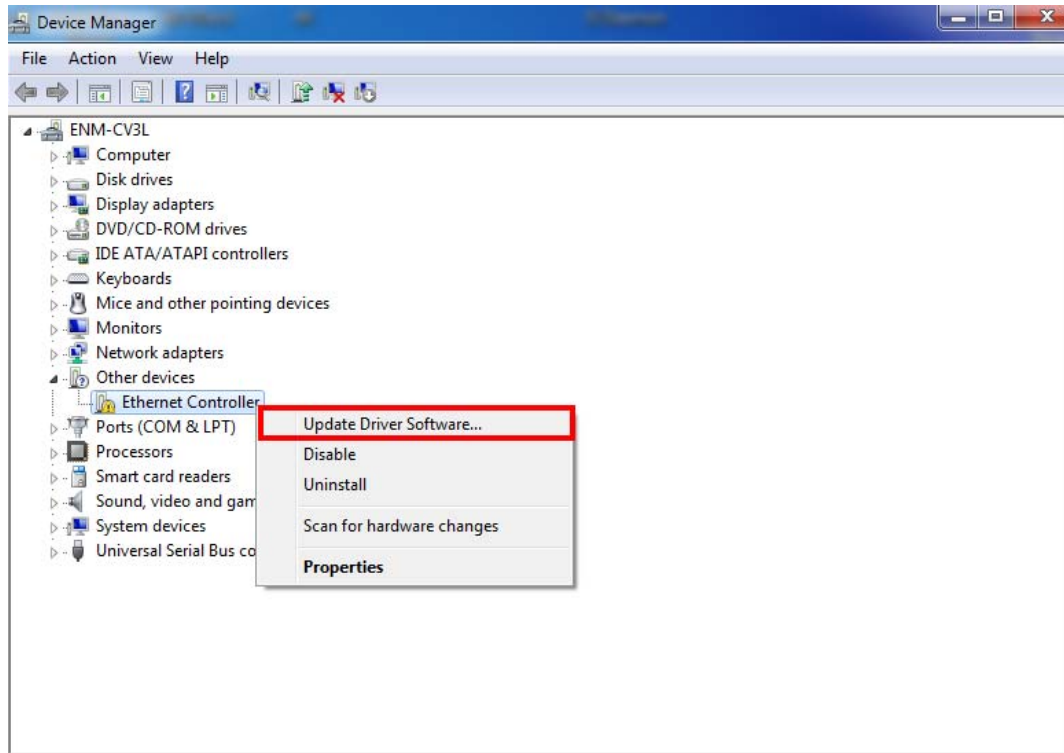


The following installation uses the ENW-9801 and operates under Windows 7; the Install procedures will be similar to the Windows Server 2008.

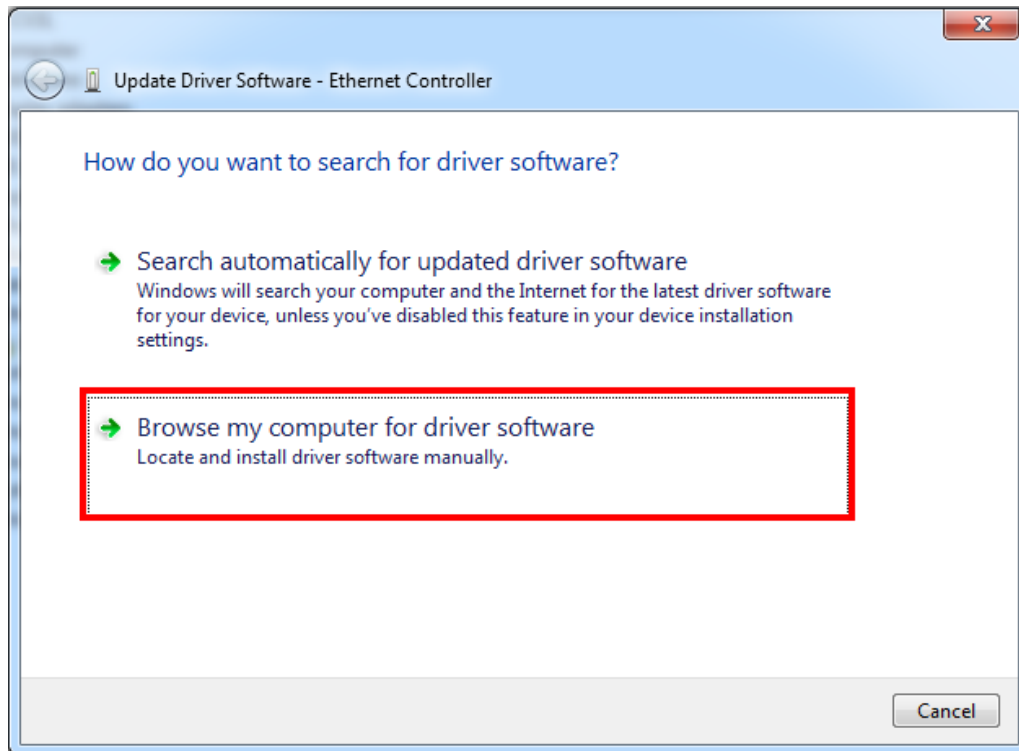
1. After installing the ENW-9801 on your PC and booting it up, Windows 7 will detect it and you have to install the driver.



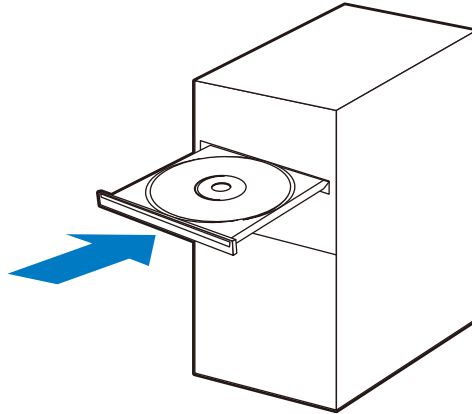
2. Please move and right-click the mouse button for Ethernet Controller item and select **“Update Driver Software”**



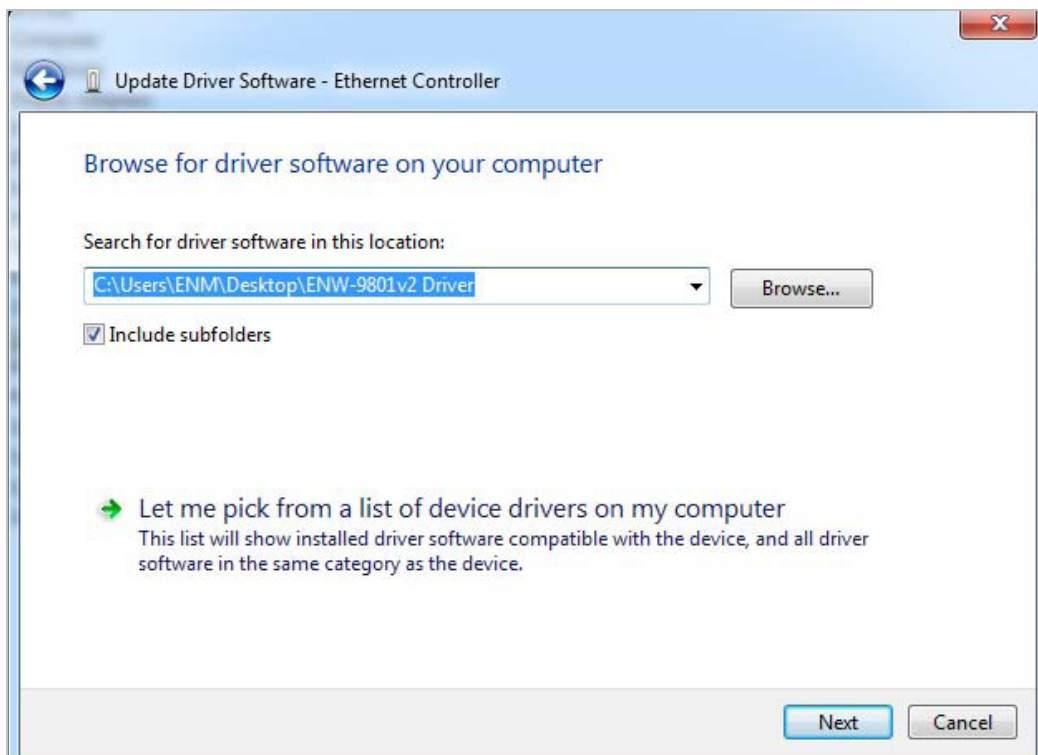
3. Please select **“Browse my computer for driver software”** for the next step.



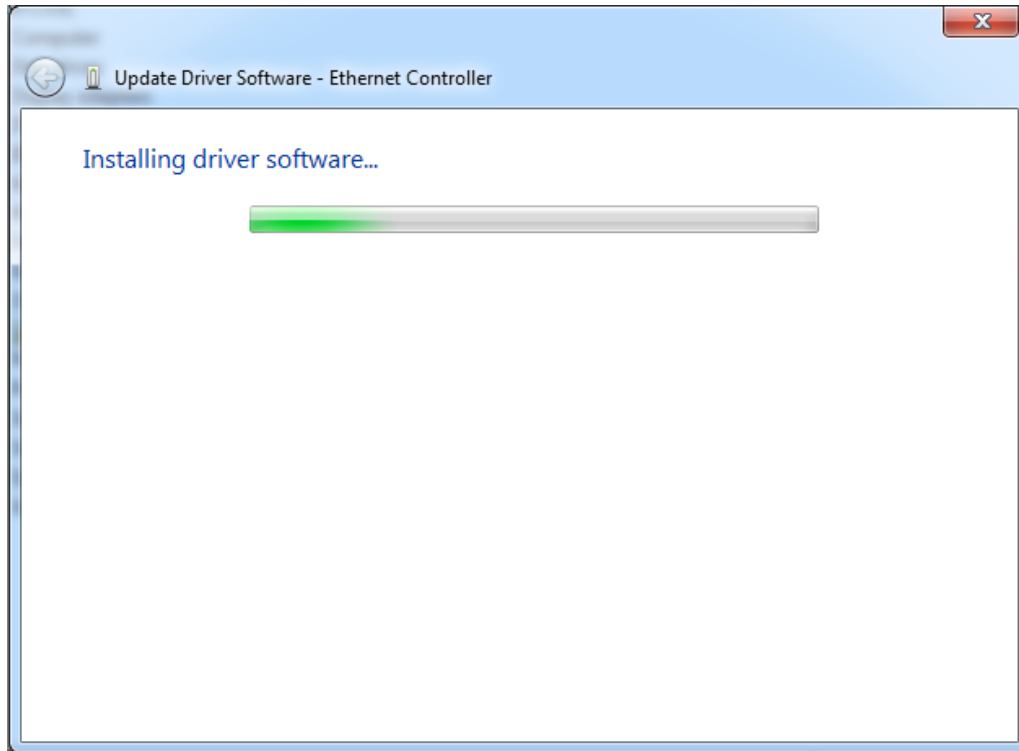
4. Insert the bundled CD into the CD-ROM driver.



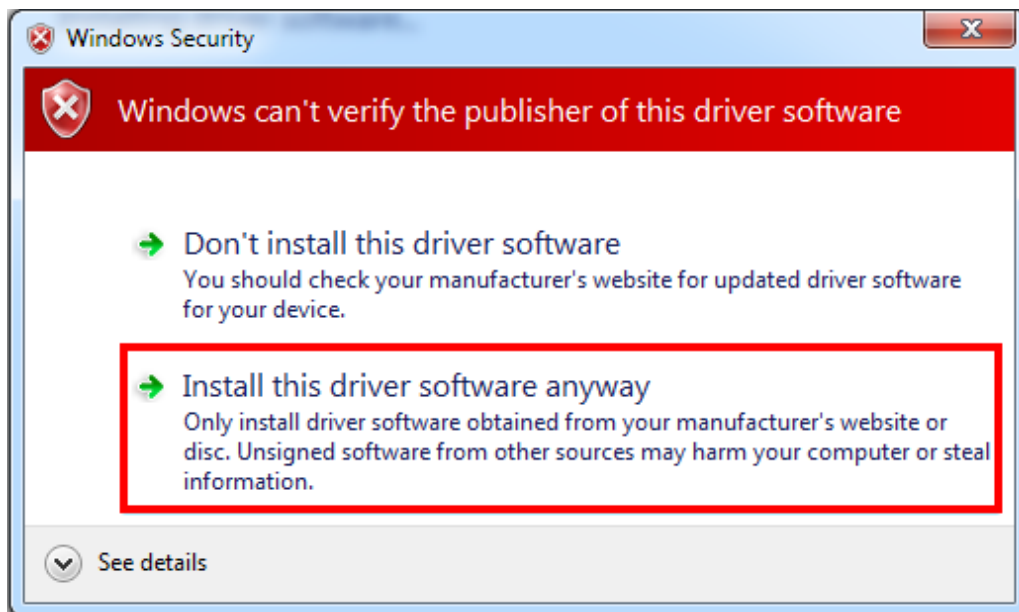
5. Please click “**Browse**” to specify the driver location to install. (Assume “**E**” is your CD-ROM drive, the driver can be found in E:\DR-ENW-9801v2 Driver). Click “**Next**” to continue.



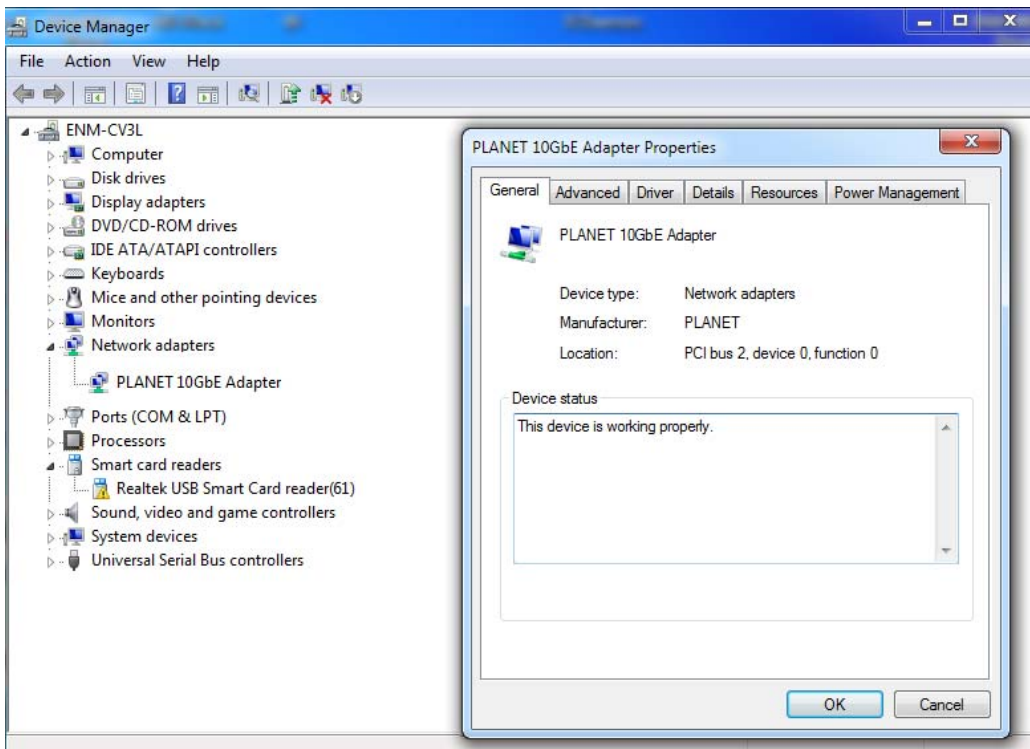
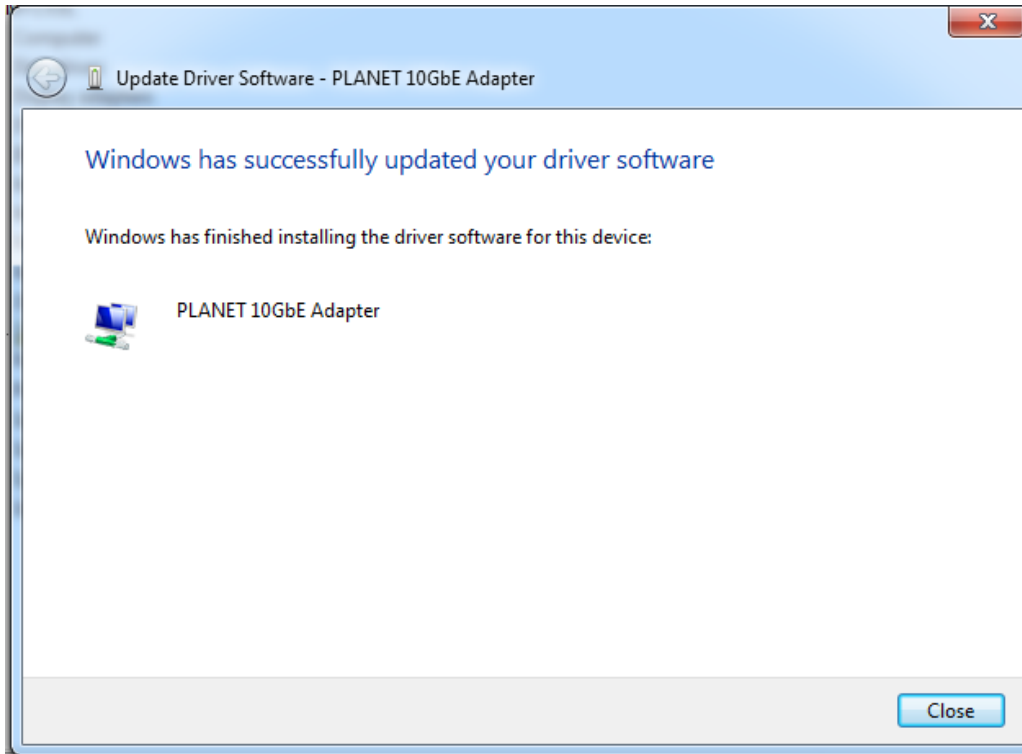
The driver is installing..



6. During the Driver installation, it will pop up one Windows Security message. Please Click "**Install this driver software anyway**" button to continue the installation.



7. Click “Close” button to complete the driver installation.

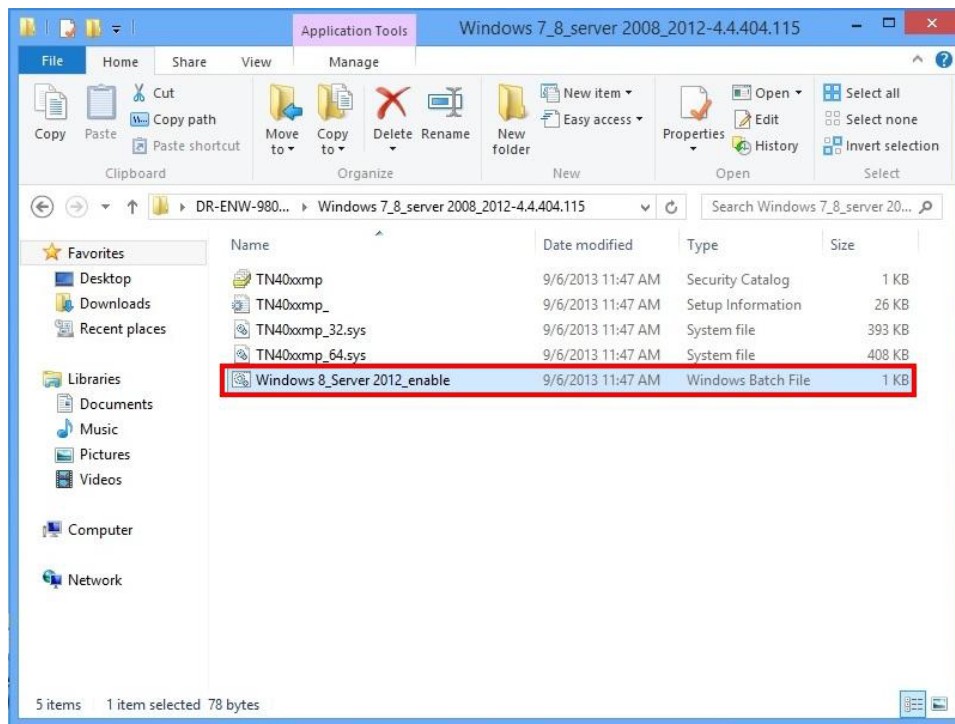


3.2 Installing Driver on Windows 8 / Server 2012

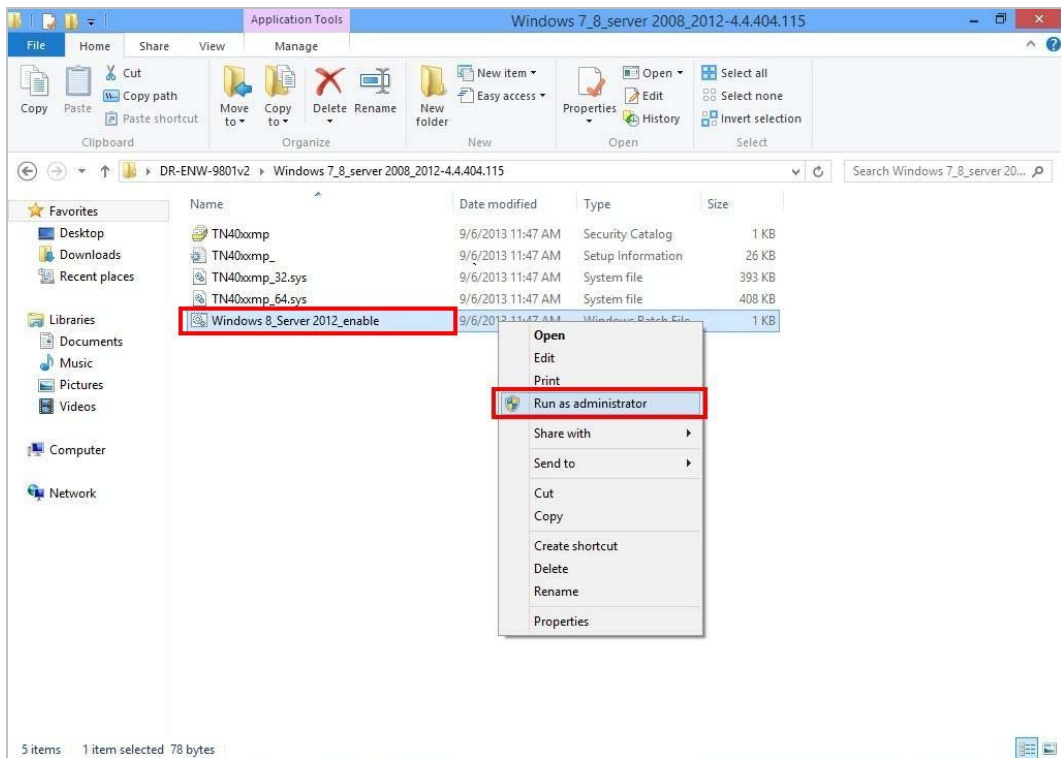


The following installation uses the ENW-9801 and operates under Windows 8; the Install procedures will be similar to the Windows Server 2012.

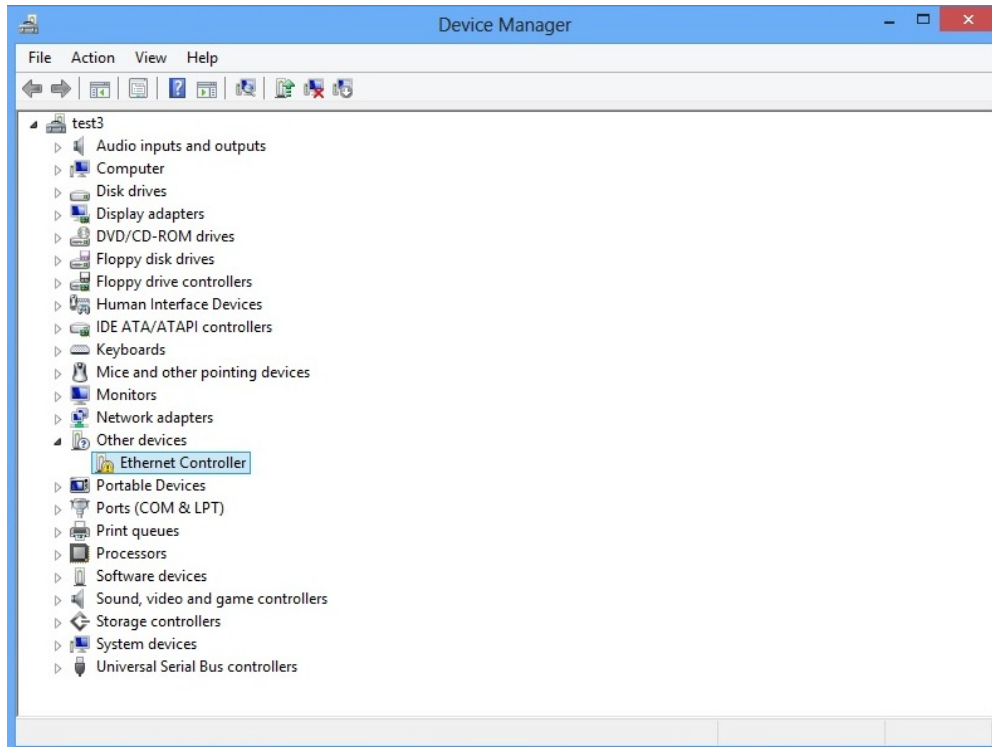
1. Please install the ENW-9801 on your PC and boot it up. Windows 8 will detect it and you have to install driver.
2. Before installing the ENW-9801 driver under Windows 8 / Server 2012 operation system, please find the “**Windows 8_Server 2012_enable.bat**” from Windows 7_8_Server 2008_2012-4.4.404.115 folder of the ENW-9801driver.



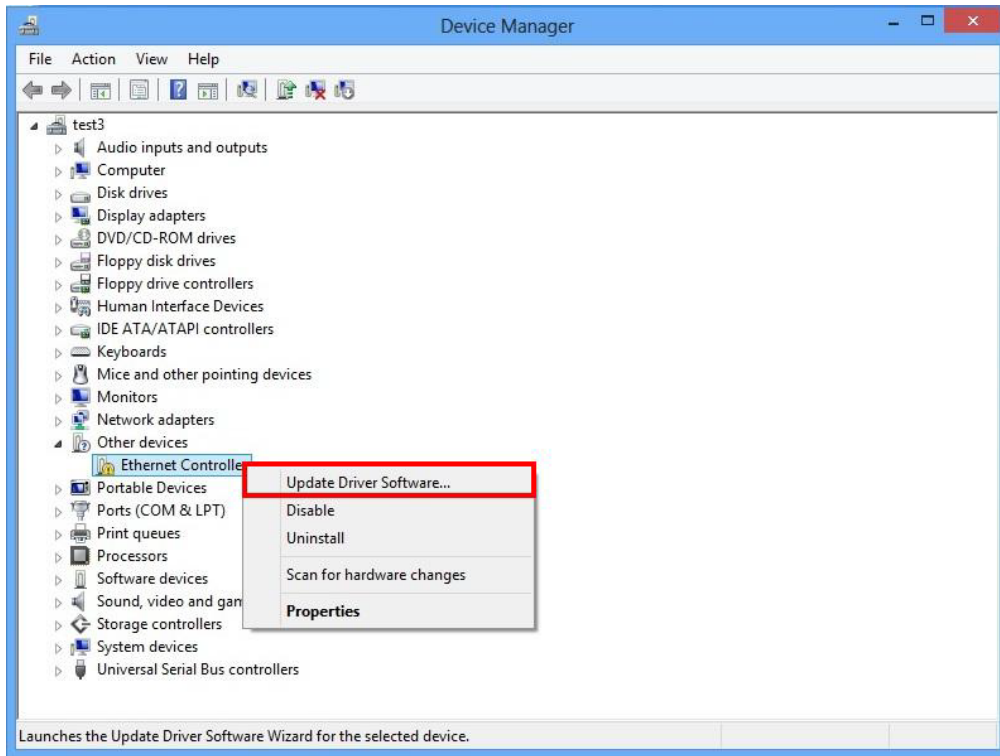
3. Please right-click the file and select "Run as administrator " and then reboot the PC.



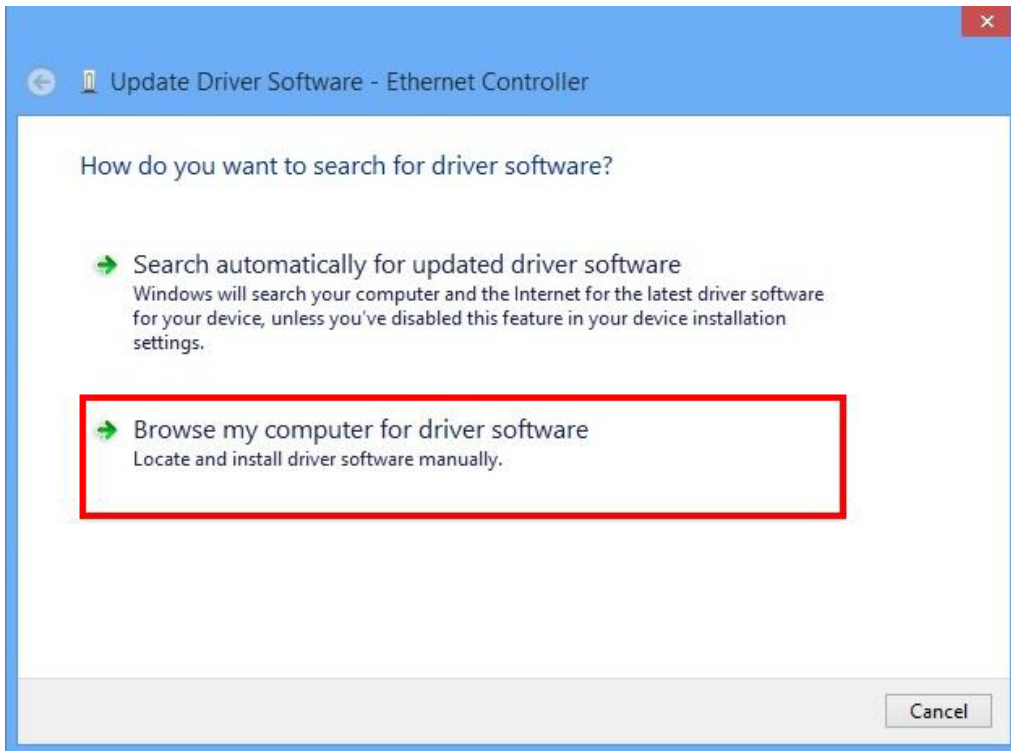
4. After the PC is rebooted, please install the driver on the ENW-9801v2 under Windows 8 / Server 2012 operating system.



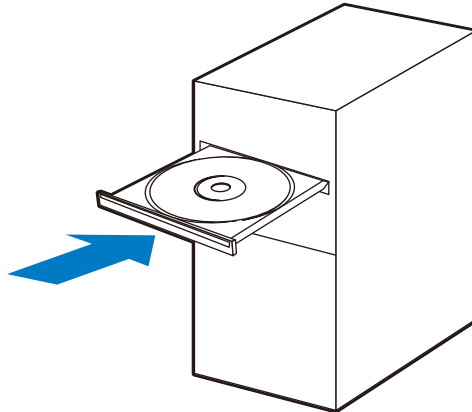
- Please move and right-click the mouse button for Ethernet Controller item and select “**Update Driver Software**”



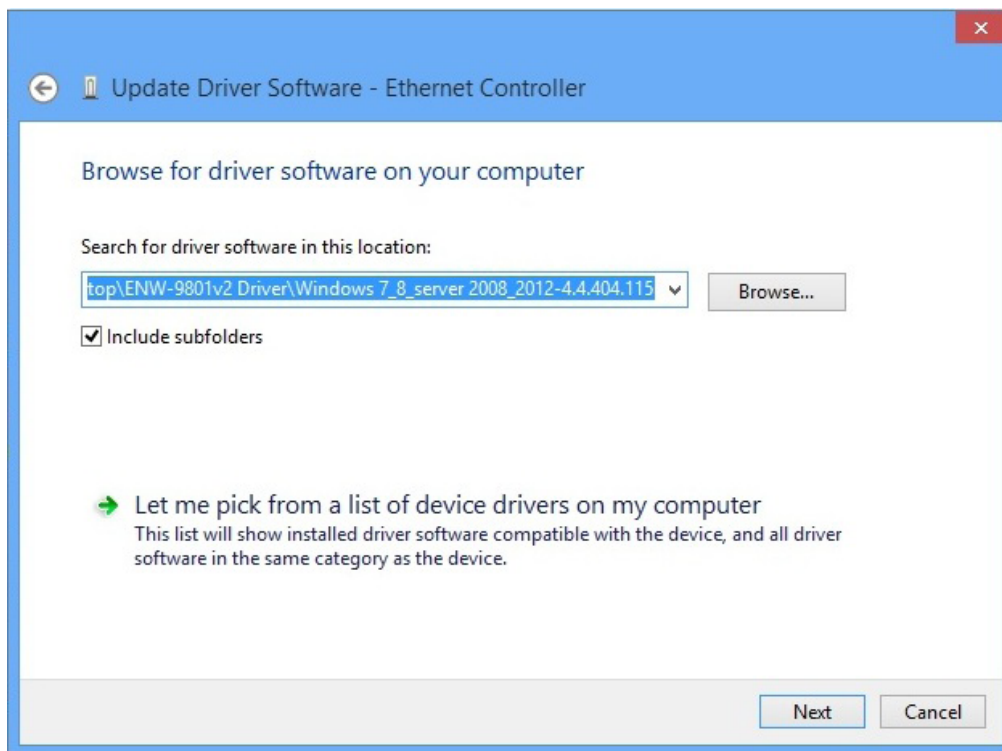
- Please select “**Browse my computer for driver software**” for the next step.



7. Insert the bundled CD into the CD-ROM driver.



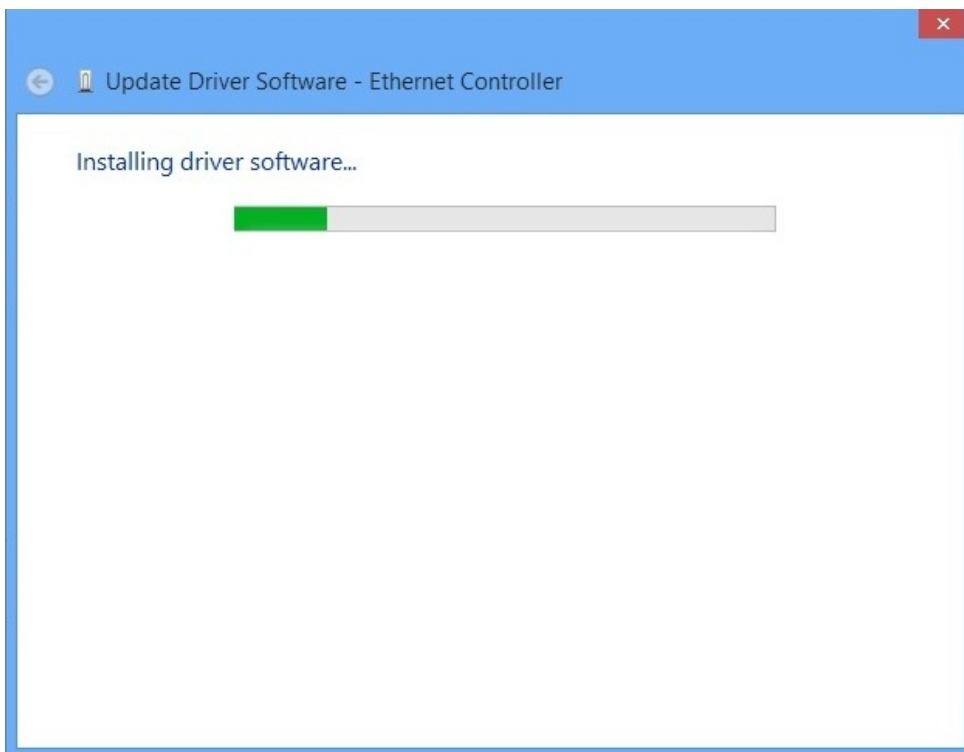
8. Please click “**Browse**” to specify the driver location to install. (Assume “**E**” is your CD-ROM drive, the driver can be found in E:\DR-ENW-9801v2 Driver). Click “**Next**” to continue.



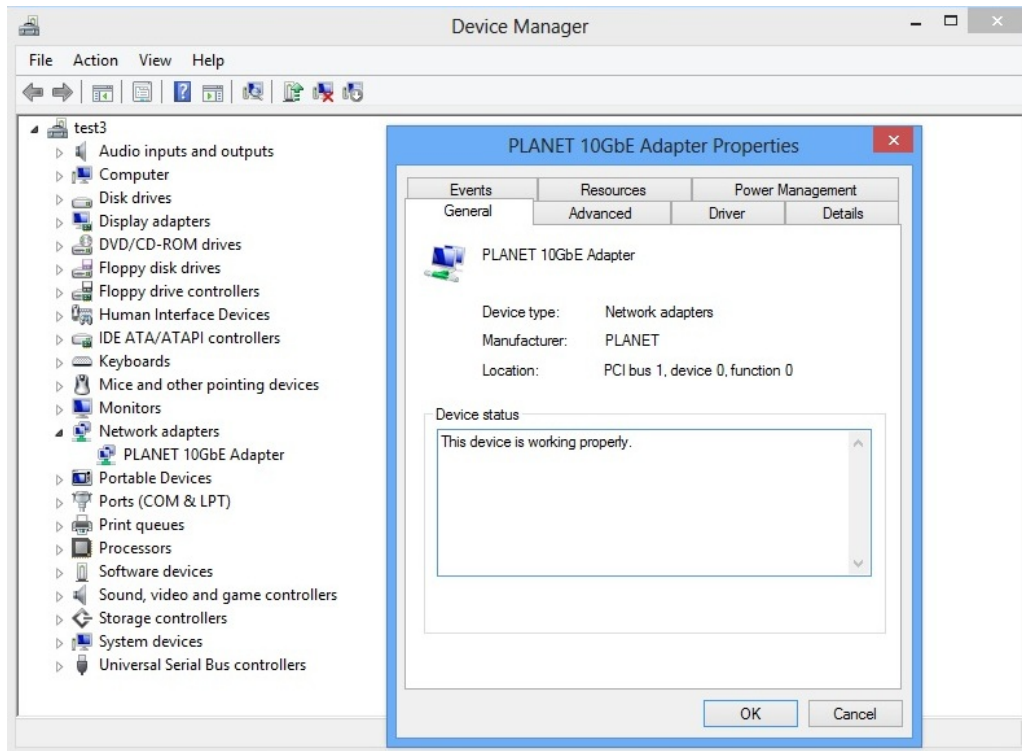
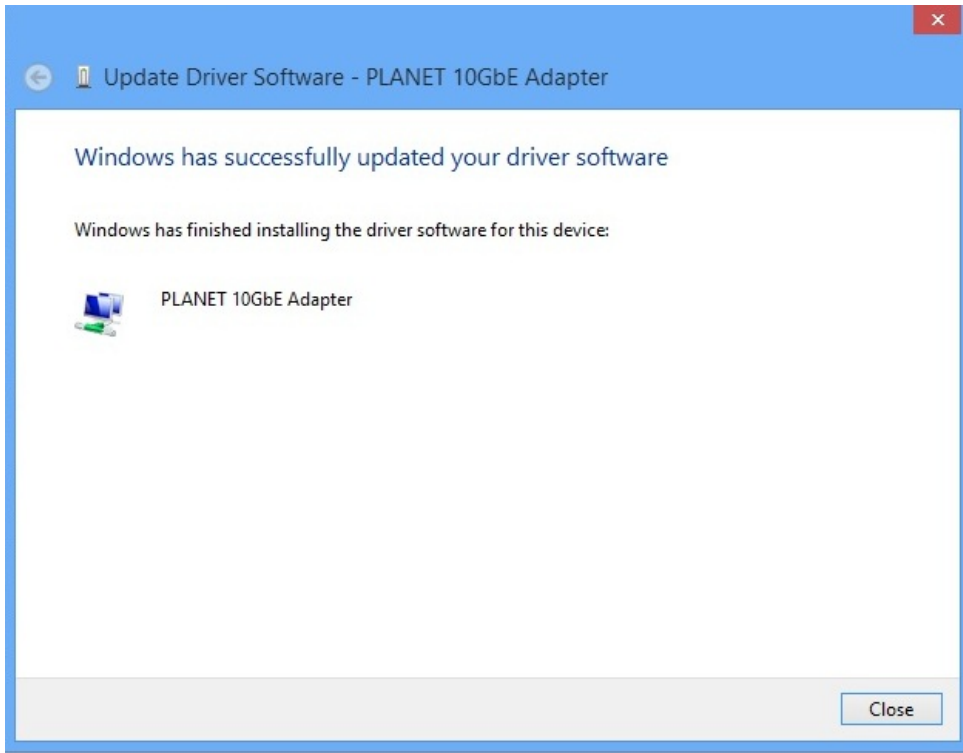
9. During the Driver installation, it will pop up one Windows Security message. Please Click **“Install this driver software anyway”** button to continue the installation.



The driver is installing..



10. Click “Close” button to complete the driver installation.



Chapter 4 Specifications

Product	ENW-9801 10Gbps SFP+ PCI Express Server Adapter	
Hardware Specifications		
Hardware Version	2	
Attachment Interface	PCI Express rev 2.0 specification x4 Interface	
Media Interface	SFP+ Connector	
Optical Module Options	LRM, LR, SR	
Memory	1Mbit internal memory	
Jumbo Frame	9K / 16K Bytes	
LED Indicators	LNK / ACT per port	
Dimensions (W x D x H)	62 x 83 x 22 mm	
Weight	47g	
Typical Power Consumption	4 watts	
Advanced Functions		
Layer 2 Features	IEEE 802.3x Flow Control support IEEE 802.1Q VLAN support	
Operating System Support	Windows Server 2008R2 64bits Windows Server 2012 64bits Windows 7 32 / 64bits Windows 8 32 / 64bits Linux (2.6x to 3.8.0)	
Standards Conformance		
Regulation Compliance	FCC Part 15 Class B, CE	
Standards Compliance	IEEE 802.3ae	10Gbps Ethernet
	IEEE 802.3x	Flow Control and Back Pressure
	IEEE 802.1Q	VLAN Tagging
Environment		
Operating	Temperature:	0 ~ 50 degrees C
	Relative Humidity:	5 ~ 95% (non-condensing)
Storage	Temperature:	-10 ~ 85 degrees C
	Relative Humidity:	5 ~ 95% (non-condensing)