



# PARALLEL PRINTER FAST ETHERNET PRINT SERVER



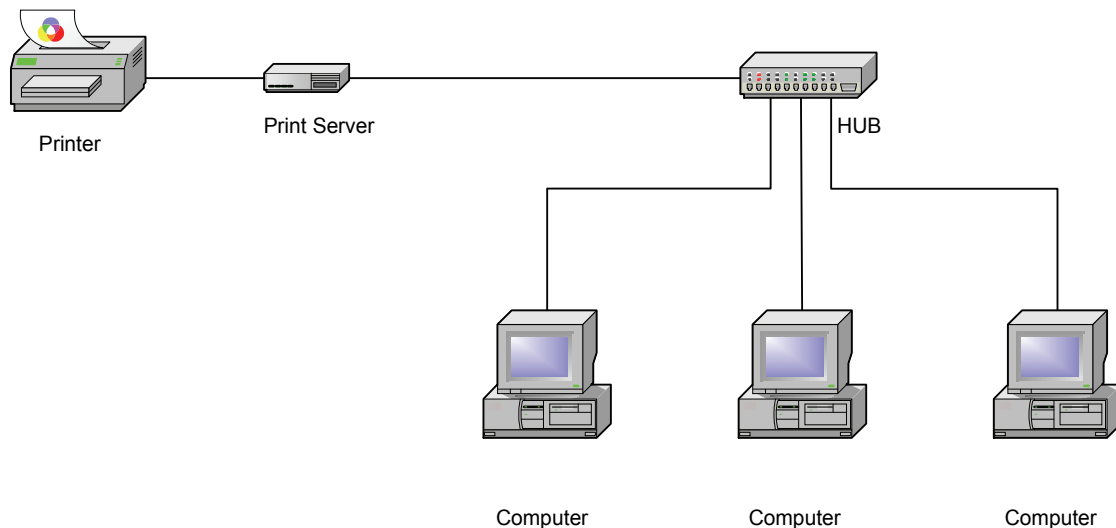
## Quick Installation Guide

DN-13001-1

## Before you start, you should prepare the following items:

- One Windows-based PC with print server setup CD
- One printer
- One printer cable
- One HUB

## Wired Network with Print Server:



## Hardware Installation:

1. Turn off the printer's power.
2. Connect the print server to your printer with the supplied printer cable.
3. Turn the printer's power on.
4. Plug the AC power adapter into the power connector on the print server.
5. Wait 10 seconds as part of the print server's Power On Self Test (POST).

## Software Installation:

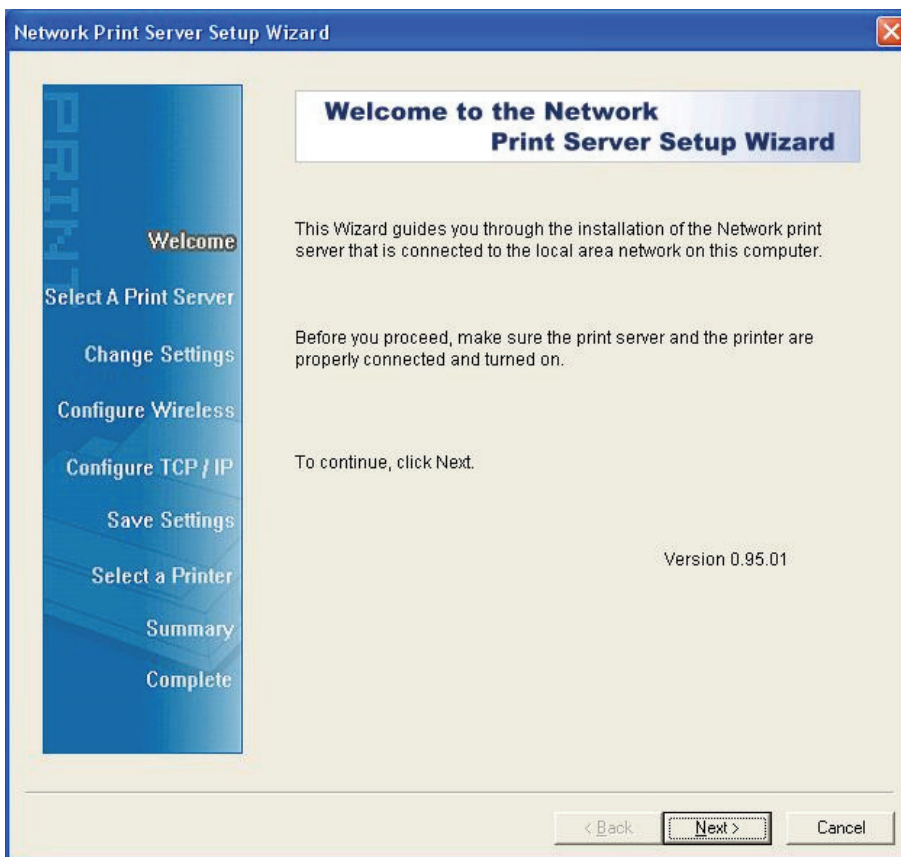
1. To enable network communication with print server, your computer must have a proper IP address, e.g. 192.168.0.100
2. Insert the setup CD into your CD-drive, and the following message appears.



**Note:**

For setup wizard under Windows Vista, you have to choose the **Run as administrator** by right-click the icon on desktop.

3. Choose **Setup Wizard** to install the print server and configure the connected printer.



4. Click **Next**, the wizard will automatically discover the print server.

5. From the **Select A Print Server** screen, select the print server that you want to configure and click **Next**.

The screenshot shows the 'Select A Print Server' window of the Network Print Server Setup Wizard. On the left is a vertical navigation pane with buttons: Welcome, **Select A Print Server**, Change Settings, Configure Wireless, Configure TCP / IP, Save Settings, Select a Printer, Summary, and Complete. The main area has a title bar 'Select A Print Server' and a message: 'This Wizard has found the following print servers on the network. Select a print server that you want to set up from the list.' Below this, it says 'Detected print servers on your local network :'. A table lists the detected servers:

Device Name	IP Address	MAC Address	Port
IP_PrintServ525CD1	192.168.0.10	00:40:01:52:5C:D1	1

Below the table is a 'Refresh' button and a note: 'If the print server you want to set up is not displayed, check the connection and click Refresh.' Another note at the bottom states: 'Note : If your print server has just been turned on, it may take a few minutes for the print server to initialize before it can be detected and displayed by the wizard.' At the bottom of the window are '< Back', 'Next >', and 'Cancel' buttons.

6. On the **Change Settings** screen, select **No** or **Yes**:

The screenshot shows the 'Change Settings' window of the Network Print Server Setup Wizard. The left navigation pane is the same as in the previous screen, but 'Change Settings' is now highlighted. The main area has a title bar 'Change Settings' and a message: 'This Wizard allows the network administrator to change some basic settings of the print server. If you are not the network administrator, do not change settings. Wrong settings may cause the print server not to function properly.' Below this, there are two radio button options:   
☒ Yes, I want to change settings.   
Password :    
☐ No, I don't want to change settings.   
At the bottom, a note states: 'To change settings, you must enter the password. A brand-new Network print server has no default password. If you are configuring a wireless print server and it's now operating in Diagnostic mode, you don't need to enter the password.' At the bottom of the window are '< Back', 'Next >', and 'Cancel' buttons.

Click **No** if you want the print server to keep using the default IP address and keep the default settings, and then click **Next**.

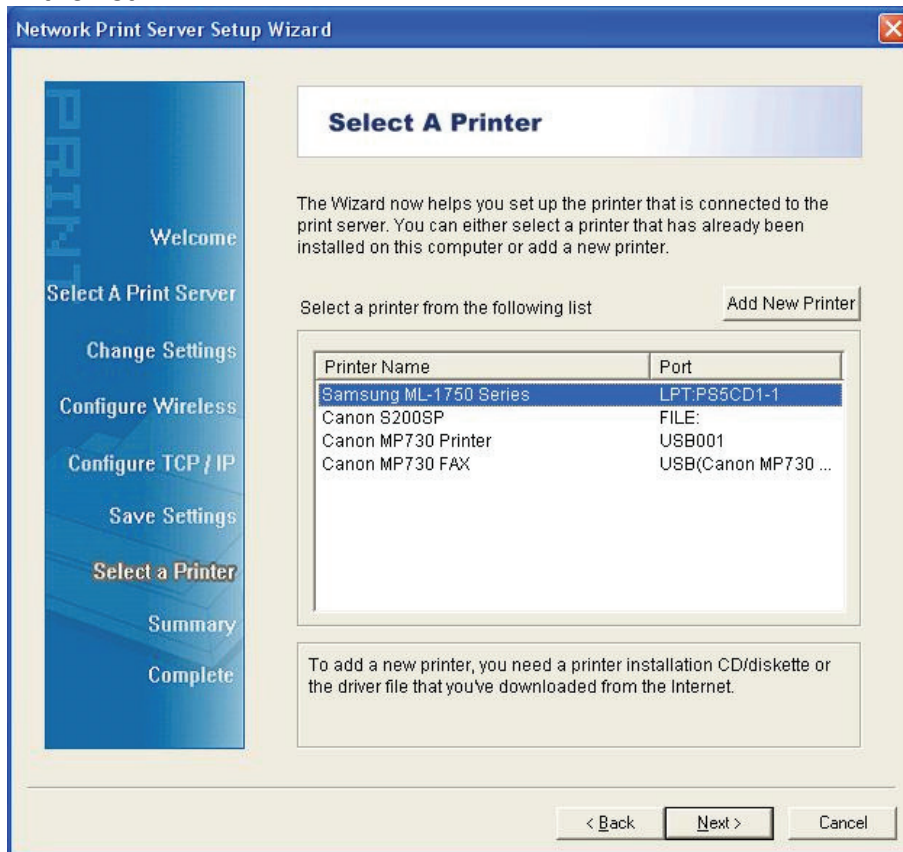
- IP address: 192.168.0.10
- Subnet Mask: 255.255.255.0

Click **Yes** if you want to change IP address to the print server, and then click **Next**.

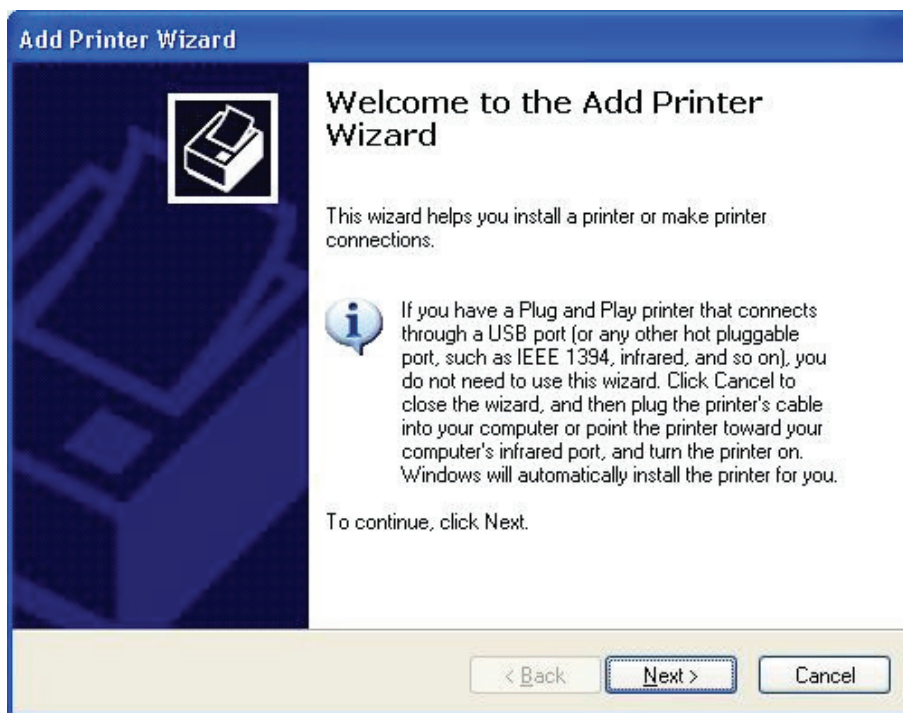
**Note:**

1. The IP address of print server must be within the same subnet as your network adapter.
2. After you save the new IP address, the print server will automatic reboot once to make ready for the new IP address. It may take a couple of seconds.

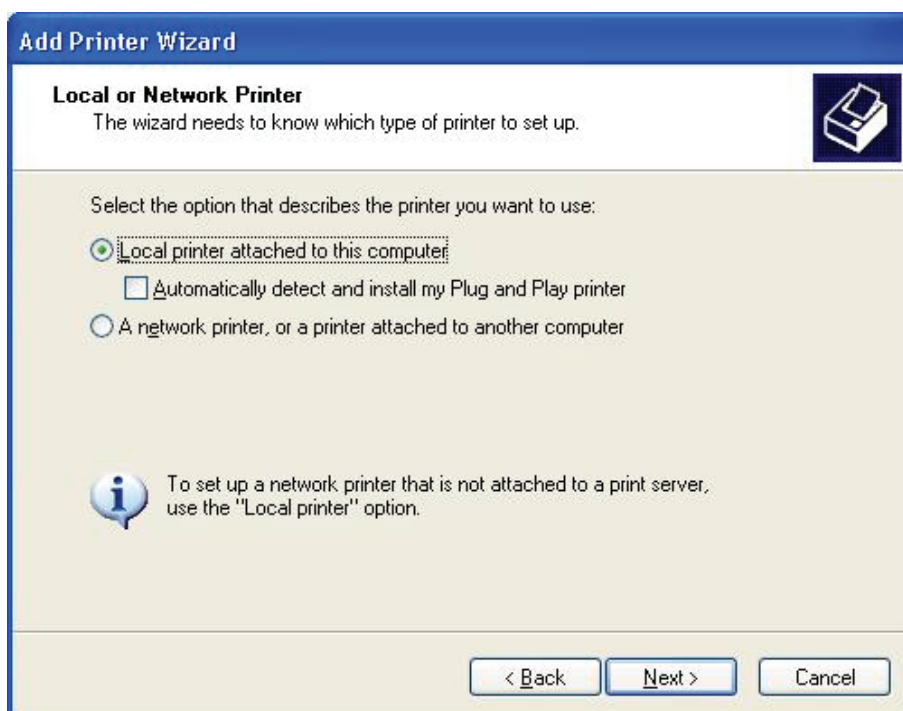
7. On the **Select A Printer** screen, select an already configured printer from the list, click **Next** and then **Finish** to complete the installation. Or Select **Add New Printer** if the print server is connected to a printer that hasn't been installed before and does not appear in the list.



8. Click **Add New Printer** to launch **Windows Add Printer Wizard**.

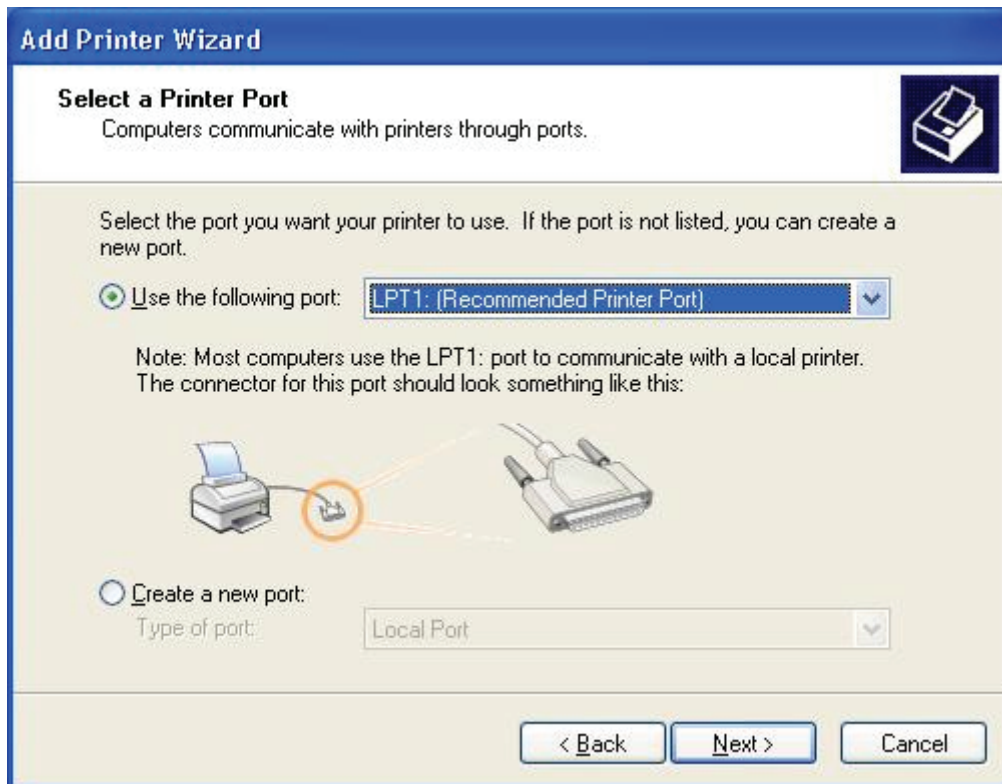


9. Click **Next** and select **Local Printer**, make sure the **Automatically detect and install my Plug and Play printer** check box is **NOT** checked. Then click **Next**.

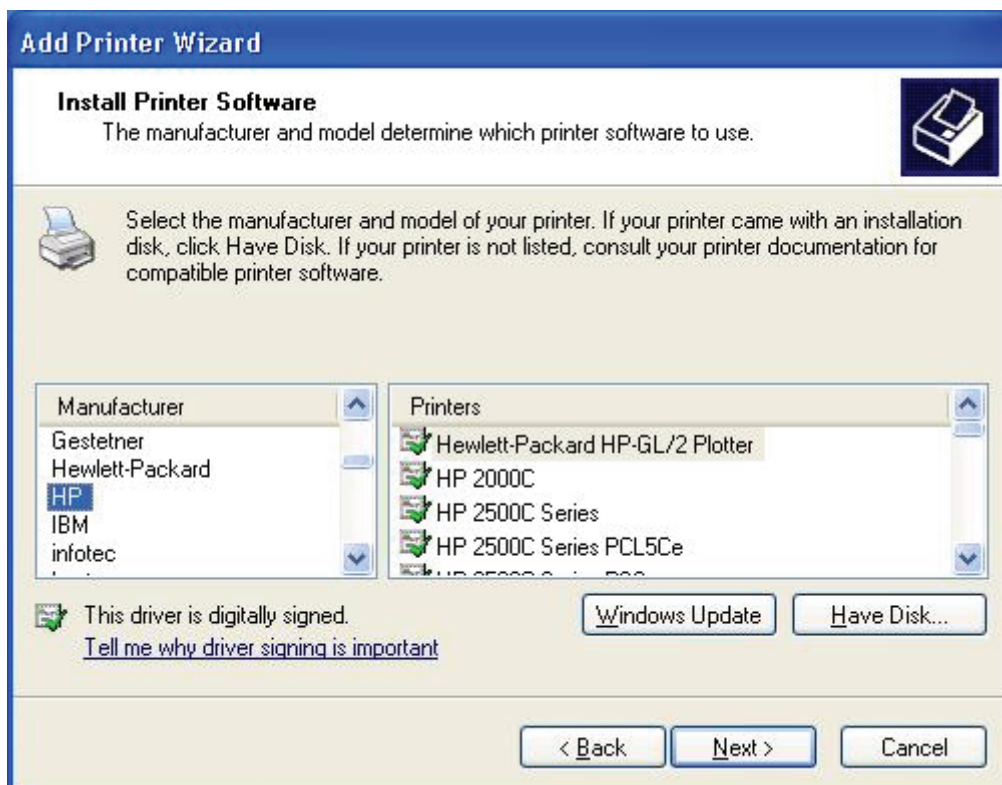




10. Make sure the **Use the following port** radio-button is clicked and select **LPT1: (Recommended Printer Port)** from the pull-down list. Then click **Next**.

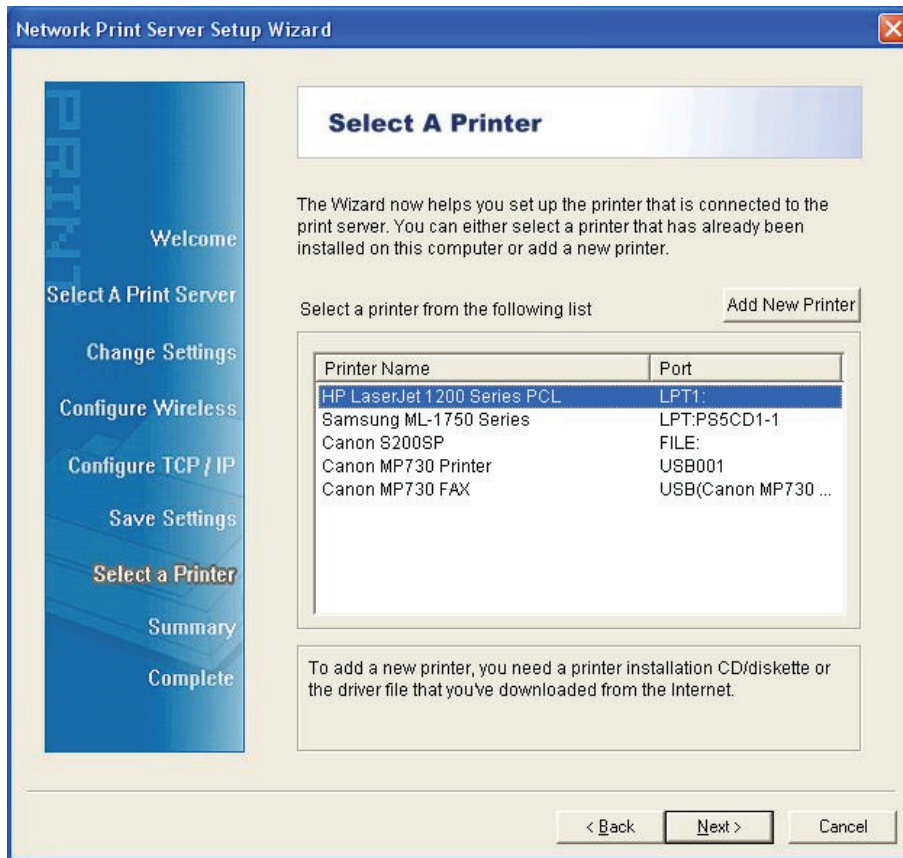


11. Select **Manufacturer** and **Printer** from the lists of printer's driver. Then click **Next**.

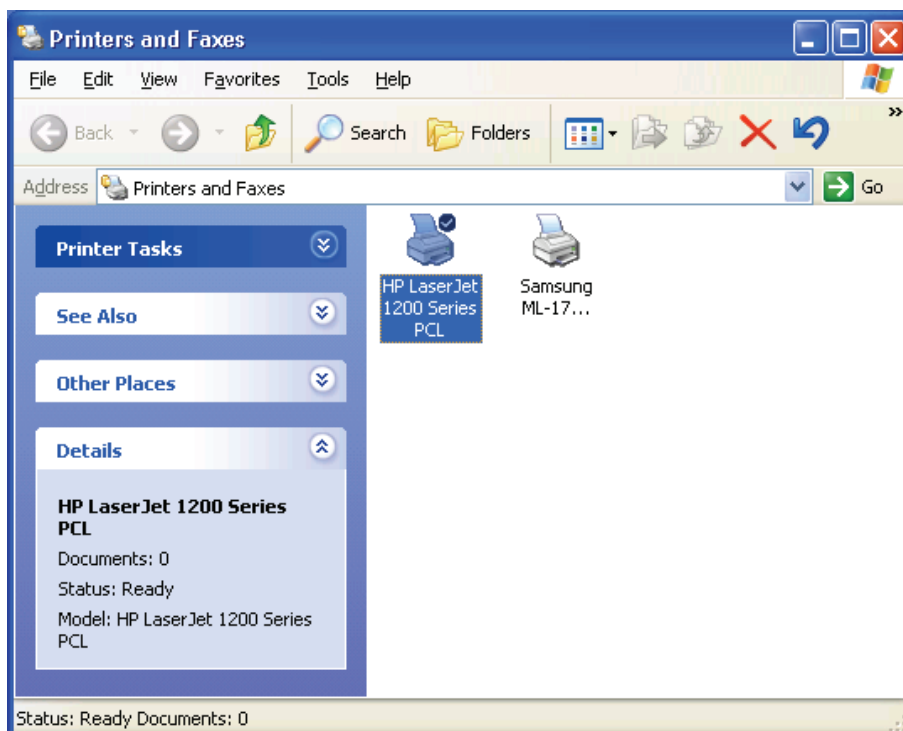


12. If you already have the printer's driver installed, you will be asked whether to keep it or to replace it. Click **Next**. Supply a name for the printer and choose whether you want to make it your default printer. Then click **Next**.

13. Then, choose whether you want to share the printer with other network users, print a test page (please select **No.**), etc. Select the appropriate radio-button and click **Next** and **Finish**.
14. In the setup wizard, finish the installation by highlighting the installed printer in the **Select a Printer** list and click **Next -> Finish**.

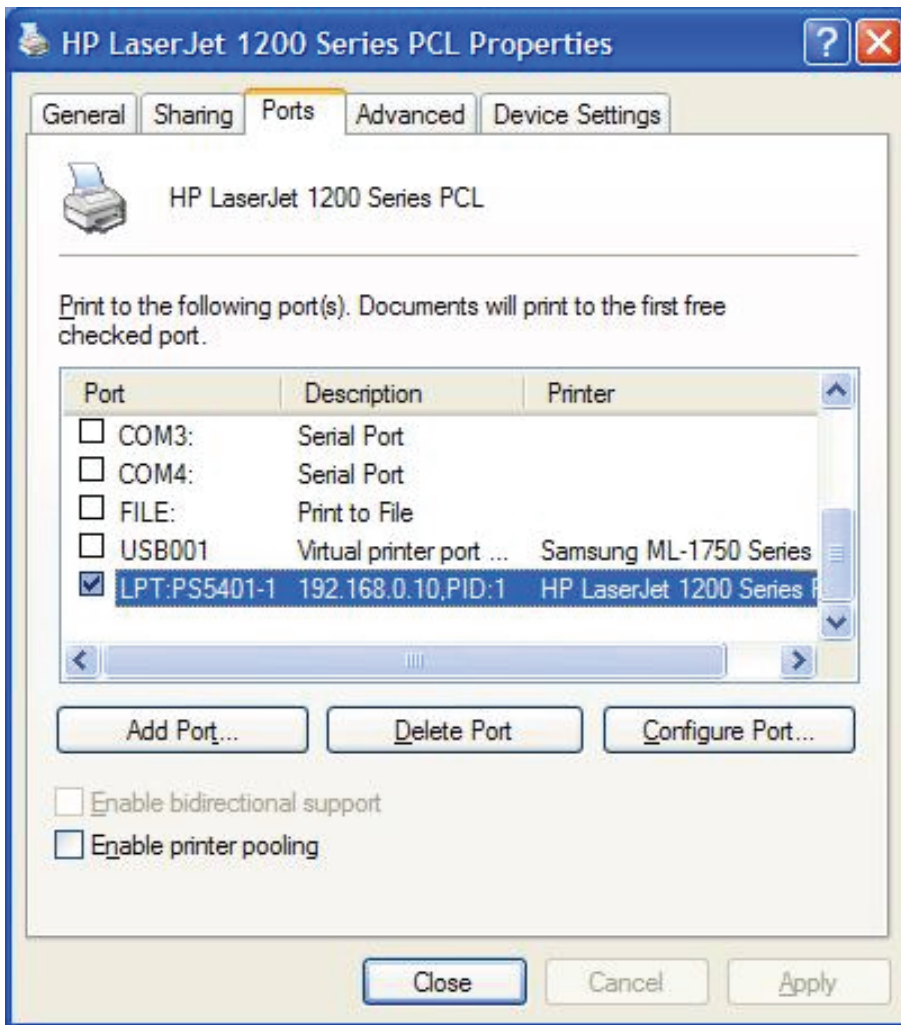


15. From Windows system, go to **start -> Printers and Faxes** and highlight your newly installed printer.





16. Right-click, select **Properties** -> **Ports** and verify that the print server's port appears.



17. Go to **General**; click **Print Test Page** to verify the configuration.

18. Done.

**Note:** If you wish to install more print servers, start setup wizard from your Windows Start menu: **start -> All Programs -> Network Print Server -> PSWizard** and repeat the installation procedure.