



# 10/100M NETWORK USB ADAPTER



**Quick Installation Guide**  
**DN-10050-1**

## ***Product Introduction***

DN-10050-1 is an USB 2.0 to Fast Ethernet Adapter that provides computer system with Ethernet link speed up to 100Mbps. It is backward compatible with USB 1.x. This compact and portable adapter is ideal as a desktop network adapter or laptop accessory.

## ***Features***

1. Compliant with the Standard Specification of USB 1.1 and 2.0
2. Integrates 10/100Mbps Fast Ethernet MAC/PHY
3. IEEE 802.3 10BASE-T/100BASE-TX compatible
4. Support full Duplex Operation 10/100Mbps modes
5. Support USB Full and High Speed modes with bus power capacity
6. Supports Suspend mode and Remote Wakeup via Link-up
7. Upstream port: USB type A
8. Downstream port: RJ45
9. Support Windows® XP/Vista/7 (32/64 bit); Mac OS 10.4 or later

## ***System Requirements***

1. Windows® XP/Vista/7 (32/64 bit), Mac OS 10.4 or later
2. An USB port

## ***Package Contents***

- 1 x USB 2.0 to Fast Ethernet Adapter
- 1 x Driver CD
- 1 x User Manual

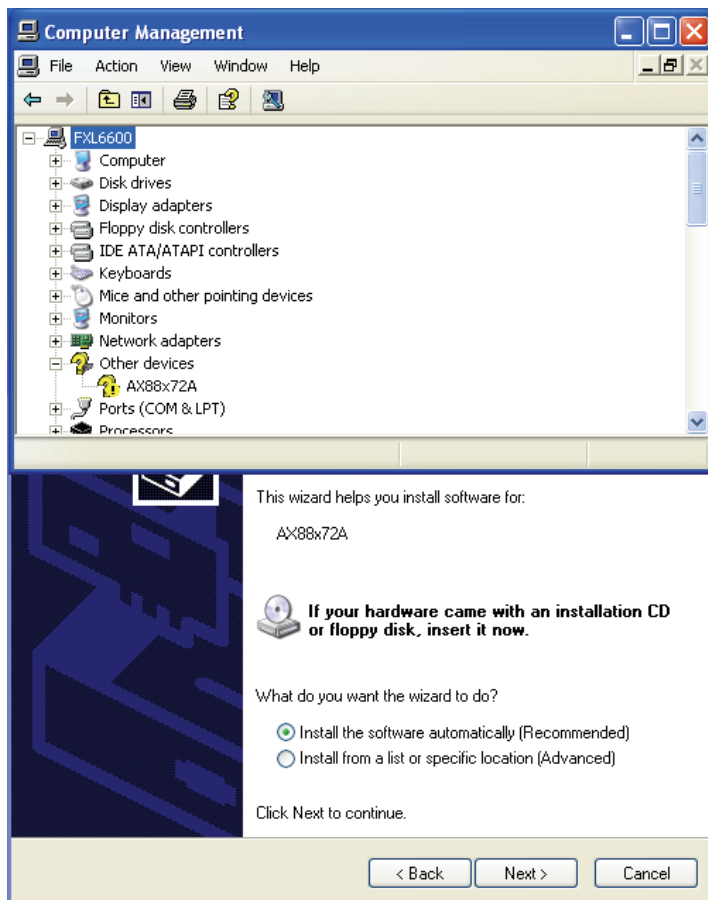
Note: Contents may vary depending on country/market

## ***Hardware Installation***

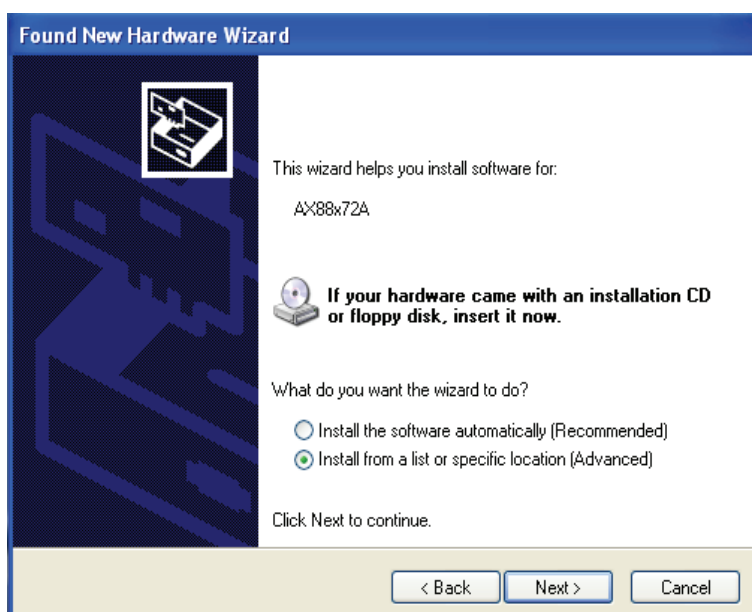
1. Plug DN-10050-1 directly into an available USB port on your computer.
2. Connect the network cable into the RJ45 port of DN-10050-1
3. Connect the other end of the network cable into an available Ethernet port on your router, switch, or any other network device.

## Driver Installation for Windows XP/Vista/7

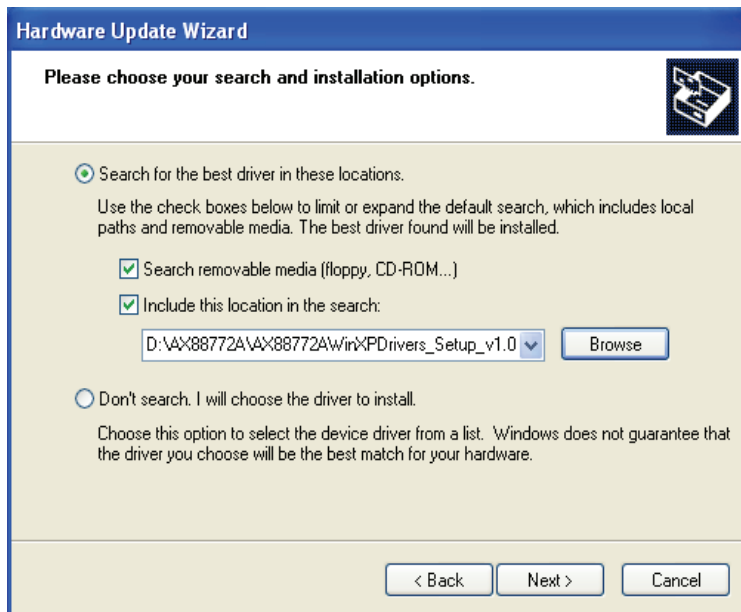
1. For Windows 98/2000/XP/WIN7, once the DN-10050-1 is connected, Windows will detect the adapter to install the drivers.



2. The “Update Device driver Wizard” will appear, informing you that it has found “**AX88x72A**”.



3. Please insert the provided CD and select the folder that matches your computer Operation System for driver installation.



4. Follow the instructions to complete the software installation. When the driver is installed successfully, the device under the System Property is shown as below.

