

ALTUSCN

ALTUSCN

ALTUSCN

ALTUSCN

ALTUSCN™
Enterprise KVM Solutions by ATEN

Product Catalog

ATEN®
Simply Better Connections™



About ATEN

ATEN International Co., Ltd. has specialized in connectivity and management solutions in information technology since its establishment in 1979, and is today considered the leading manufacturer of KVM switches worldwide. ATEN offers a broad range of solutions to meet the needs of consumers, small office/home office (SOHO) users, small and medium sized business (SMB) customers, and global enterprises.

ATEN's state-of-the-art KVM switches are easy to use, highly integrated, and demonstrate ATEN's commitment to innovation. For example, ATEN was first-to-market with a Cable KVM switch featuring a patented built-in cable design and tiny desktop footprint with full KVM switch functionality. Having recognized the increasing demand for USB and audio applications, ATEN also offers the CubiQ™ range of KVMP™ switches for desktop multimedia applications. Incorporating the latest advances in high-definition video and audio, these all-in-one solutions transform a KVM switch into a desktop control center.

Since 2002, ATEN has been expanding its ALTUSEN line of high-end server management solutions for the enterprise-level KVM switch market. Our product offerings in this sector have increased exponentially over the last few years and continue to develop to meet the demands of enterprise users. With a keen eye on your future enterprise growth, ATEN offers a new series of KVM Over IP products as a next-generation solution for expanding KVM applications. And to meet the demand for remote management, ATEN has recently upgraded its KVM on the NET™ range of external and embedded solutions that

allow you to effectively manage your IT infrastructure from anywhere in the world.

ATEN has also consolidated its 30 years of video technology expertise into our new Applied Video Solutions range for a wide variety of corporate, industrial, commercial and home theater applications. Benefiting from numerous patented technologies, our VanCryst™ range of video-integrated solutions include high-quality audio/video switches, splitters, extenders, and converters, available with VGA, DVI, HDMI, and high definition component video interfaces. Furthermore, the ProXime™ range of KVM extenders brings control closer to you wherever your installation is located. ATEN also provides industry control data switches and signal converters, and a host of popular USB and FireWire hubs, switches, and converters.

At ATEN, we are committed to protecting the environment. Our manufacturing operations are ISO 14001 certified and we are continually searching for ways to reduce their impact on the environment. In addition, we are fully compliant with both the European Union and China's RoHS directives restricting the use of hazardous materials in electronic products.

To offer the best service, we are continually expanding our presence throughout the world to better assist our partners and customers with localized solutions, services, and support. ATEN is strategically located with subsidiaries in Taiwan, China, Japan, Belgium, Canada, Korea, the US, and the UK.



Contents

High-Density KVM Switches	P01
KH1508/KH1516 · KH2508/KH2516 · KH0116	
Dual Rail LCD KVM Switches	P07
KL1100 · KL9108/KL9116 · KL1508/KL1516 · KL3116T · KL3116	
Control Center Over the NET™	P17
CC2000	
KVM Over the NET™	P21
KN2124v/KN2140v/KN4124v/KN4140v · KN2116A/KN2132/KN4116/KN4132 KH1508i/KH1516i	
Power Over the NET™	P29
PN5212/PN5320 · PN7212/PN7320 · EA1140/EA1240 · PN9108 · PN0108	
Serial Over the NET™	P37
SN3101 · SN0108/SN0116	
Guardian Over the NET™	P43
GN0116 · EA2110/EA2210/EA2310	
Matrix KVM Switches	P47
KM0032/KM0532/KM0932	
KVM Accessories	P53
CV130A · CV131A KA7120/KA7130/KA7140/KA7170/KA7175/KA7176 KA9120/KA9130/KA9140/KA9170 KA9520/KA9570	
Cables	P57



Ten Reasons to Choose **ALTUSEN Enterprise KVM Solutions**

Quality Engineering

At ATEN we believe that a KVM switch is neither greater than its design nor better than the sum of its parts. For this reason, we employ engineers who are experts in their fields and provide them with an environment where they can thrive and give wings to their ideas. Furthermore, we carefully select and test every component before it goes into our ALTUSEN enterprise-class KVM switches.

And we do not stop there. Throughout the design and production processes we continue testing to ensure that when you buy ALTUSEN enterprise-class KVM switches, you get the reliability and performance you demand.

ASIC Onboard

The Application Specific Integrated Chip (ASIC) represents a new level in KVM switch reliability. By incorporating our own patented ASIC into each new design, we enhance the functionality and compatibility of ALTUSEN products. Moreover, our ASIC enables us to deliver unique KVM switch features at competitive costs to our customers while maintaining our high mark of quality.

Easy Installation

Many ALTUSEN KVM switches provide a modular approach to network infrastructure management. Console modules are required to connect consoles (monitor, keyboard, and mouse) to KVM switches, and KVM adapter cables connect the KVM switches to servers. To help manage and arrange the cabling and installation, most KVM adapter cables are equipped with an adjustable buckle and mounting bracket. The adjustable buckle keeps everything neat and tidy, while the mounting bracket allows them to be fixed on the rack.

Detachable Front Panel

Many ALTUSEN KVM switches have a unique, detachable front panel, enabling the switch to perfectly fit in any rack depth. The front panel separates from the chassis for front-rack mounting, while the chassis can be mounted at the rear of the rack. This design provides the utmost convenience because it allows users easy access to both the front panel controls and rear panel connections. It also makes connecting computers to the switch a cinch.

Internal Power Supply

Every ALTUSEN KVM switch features a built-in full range power supply – not a bulky external power adapter – so that it will not horde valuable power strip space. Standard IEC power inlets also allow quick and easy cable replacement if the original power cable is ever lost or misplaced.

Space-Saving Design

ALTUSEN KVM switches are designed for real-world applications. Our engineers continually explore new ways to conserve rack space for our customers. One example is the Dual Rail LCD KVM Switch. It offers a space-saving, streamlined approach to KVM switch technology by integrating an LCD monitor, keyboard, and touchpad in a Dual Rail housing. The Dual Rail housing is slightly less than 1U high for easy installation and manipulation in 1U of rack space.

Firmware Updates

In keeping with our commitment to ongoing product support, we provide firmware updates for our KVM switches. As firmware updates become available we place them on our website so that customers can easily download and install them at their convenience.

Rigorous Testing

ALTUSEN KVM switches are rigorously tested to ensure that they meet our high-quality standards. At our state-of-the-art research and design center, prototype KVM switches are put through a battery of tests to eliminate problems. Such tests include, operating the switch for ten thousand continuous hours, operating at elevated (or lowered) temperature levels and increased humidity, horizontal and vertical vibration tests, and even robots that push the buttons thousands of times. To ensure product reliability, ALTUSEN products have received certificates of compliance with the following standards – CE, FCC, UL, TUV, PSE and ISTA 3A drop test.

New Levels of Accessibility

Many ALTUSEN switches offer unrivalled levels of administrator accessibility, including platform-independent, browser-based access via the Internet or LAN. Combining application-specific functionality with unbeatable flexibility, the ALTUSEN range provides IT administrators with the management tools for server rooms everywhere, both for now and in the future.

Exceptional Price Performance

One final reason to choose ALTUSEN KVM switches is the exceptional performance they offer at considerably lower prices than the competition. Dollar for dollar, ALTUSEN enterprise-class KVM switches outperform the competition. Our know-how and high-tech automated manufacturing process enable us to produce superior KVM switches. We believe an efficient solution is a great benefit to server room management, and providing the most economical and exceptional price performance solutions is one of our missions.





Application Diagram

ALTUSEN Products

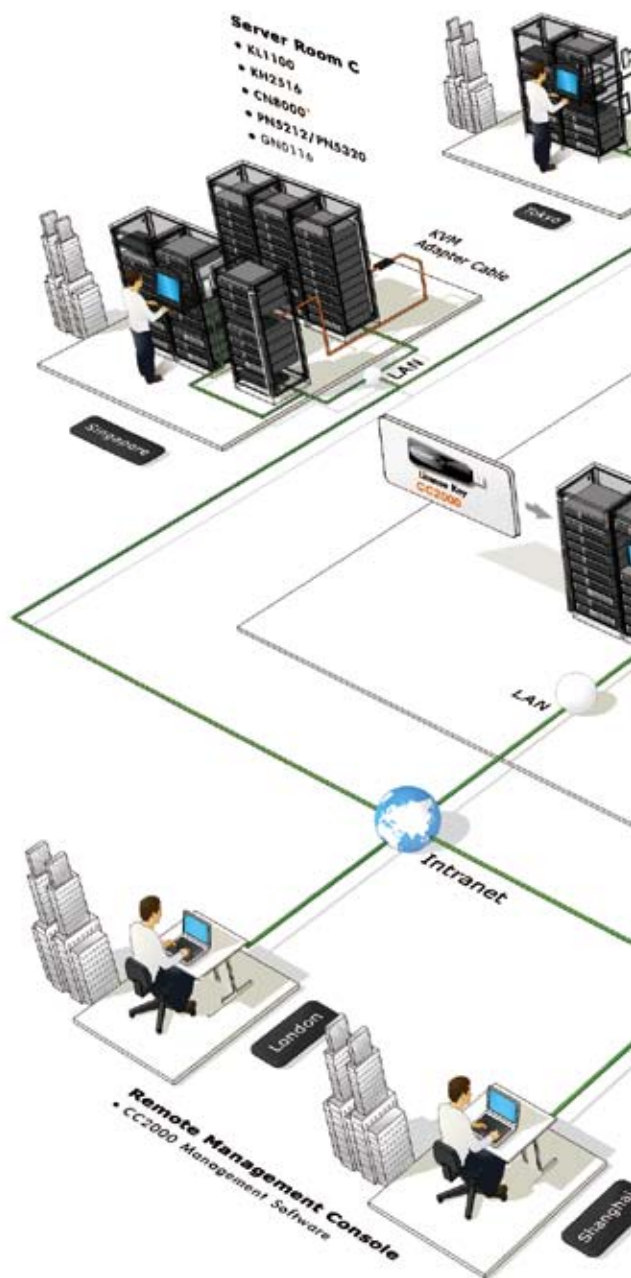
ALTUSEN, the enterprise-class KVM product line from ATEN, provides a range of advanced IT infrastructure management solutions that suit the server room needs of most companies and data centers.

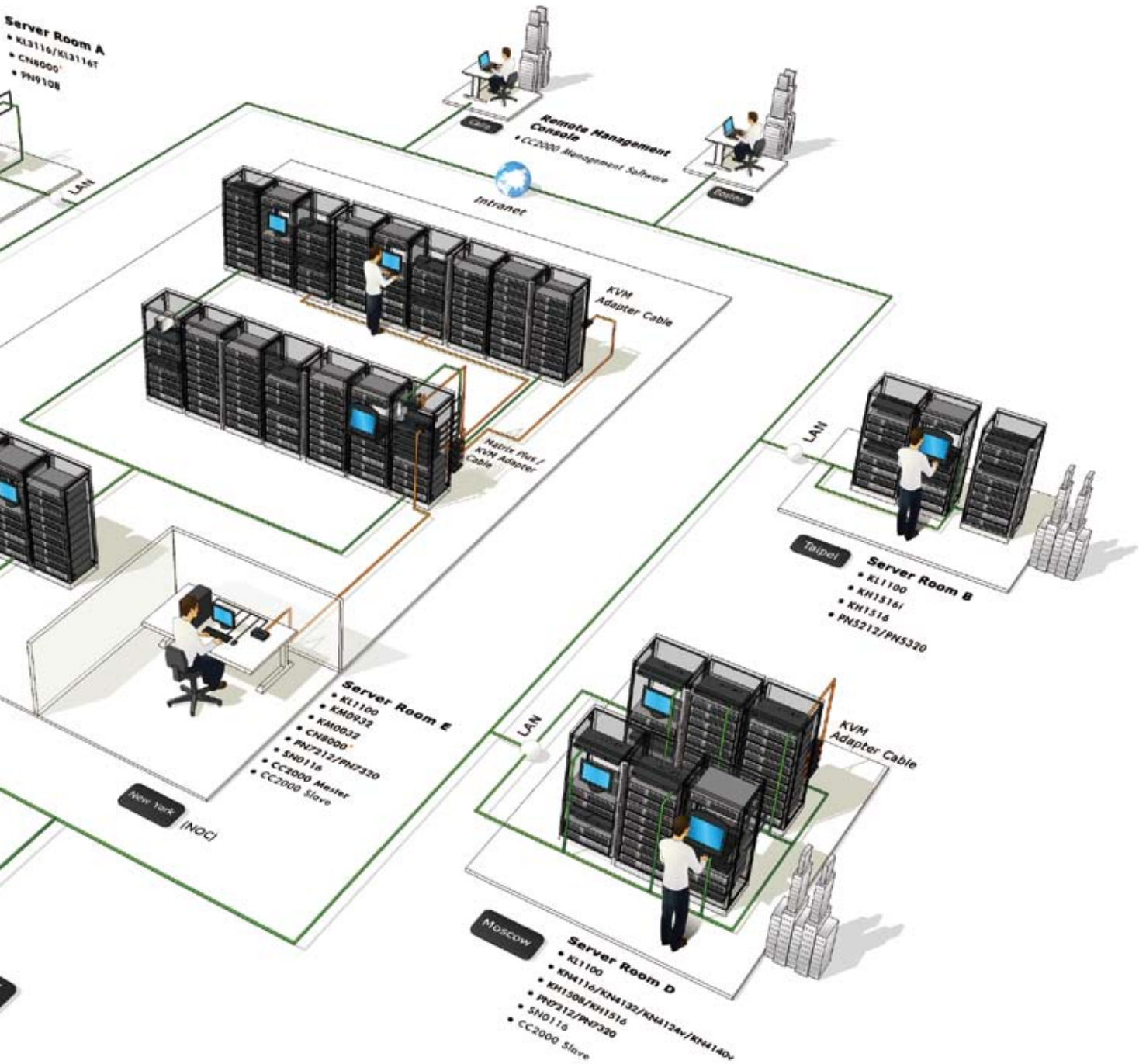
ALTUSEN offers single console and multi-console KVM switches, allowing users to control and manage multiple servers. You can choose the KVM switches depending on the number of servers and users, platforms, and server/console interfaces. ALTUSEN products support the most popular connectivity interfaces available in the market: PC, Mac, Sun, and Serial.

The ALTUSEN KVM Over the NET™ series of IP-based KVM control units allows you to upgrade your IT management efficiency by increasing productivity and reducing operational costs. KVM Over the NET™ products utilize TCP/IP for their communication protocol, allowing operators to monitor, access, and troubleshoot multiple server room assets from any computer on the Net – whether that computer is located down the hall, across the street, or halfway across the world. ALTUSEN also offers Dual Rail LCD KVM Switches to provide a space-saving, streamlined approach to KVM switch technology by integrating an LCD monitor, keyboard and touchpad in a Dual Rail housing. The ALTUSEN Dual Rail product line maximizes space in your server room: the keyboard “hides away” when not in use, while the thin profile LCD monitor provides continuous monitoring of computers.

ALTUSEN provides KVM Over the NET™ as well as Serial Over the NET™, Power Over the NET™, and Guardian Over the NET™. Most of the Over the NET™ devices can be centrally controlled through ALTUSEN Control Center Over the NET™. Administrators can control servers and serial devices, control the power, and monitor the health of their network infrastructure using a single IP address.

ALTUSEN offers perfect options for enterprises. Regardless of the platform, interface, the physical location, or the scale of server room, with ALTUSEN you can consolidate and manage your network infrastructure from just about anywhere.





* The CN8000 from ATEN is an ultra-compact, Over IP solution for remote access to computers and KVM installations. Please see ATEN catalog or www.aten.com for more details.

ALTUSEN Server Room Solutions

Server Room A

- ▶ Location: Tokyo
- Size: Small
- Servers: 7-16
- Consoles: 1

Solution I :

- KL1100 Dual Rail LCD PS/2-USB Console
- KH0116 16-Port High-Density KVM Switch
- KA9250 Console Module
- CN8000* KVM on the NET™
- PN0108 Power Over the NET™

Console Extension

Solution II

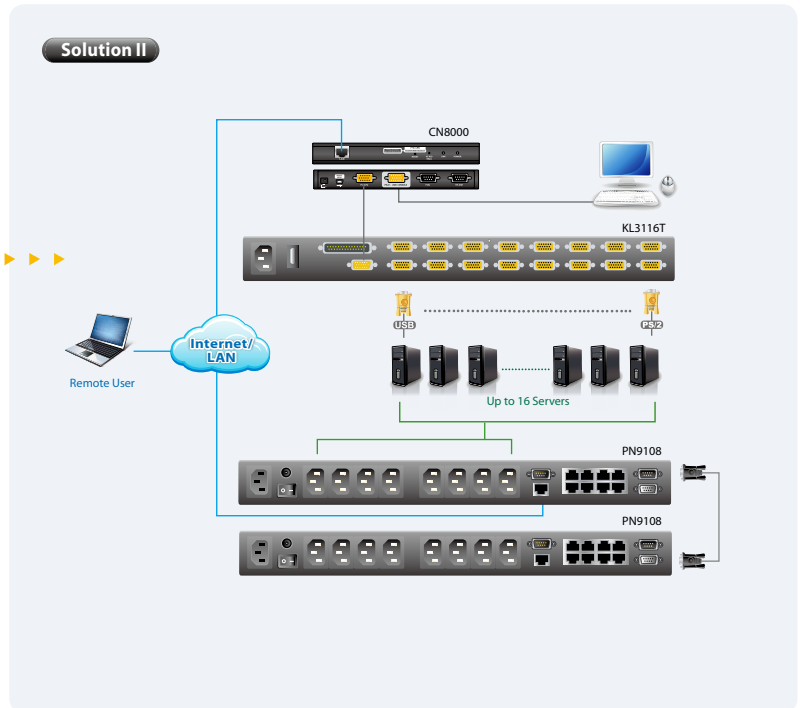
- KL3116 16-Port Dual Rail LCD KVMP Switch
- OR
- KL3116T 16-Port Dual Rail Touch Screen KVMP Switch
- CN8000* KVM on the NET™
- PN9108 or PN5212 or PN5320 Power Over the NET™

Dual Interface
Touchscreen Available

Solution III

- KL9116 Dual Rail LCD KVM Switch (LCD Console + KVM Switch with KVM over IP)
- PN0108 Power Over the NET™

All-in-one Connectivity and Control



Server Room B

- ▶ Location: Taipei
- Size: Small to Medium
- Servers: 16-32
- Consoles: 1

Solution I :

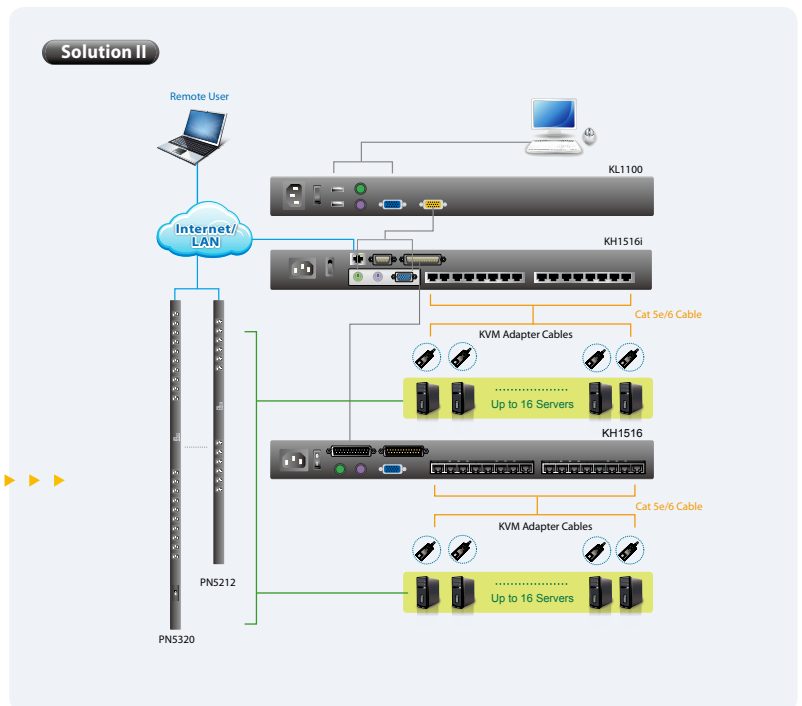
- KL1516 Cat 5 High-Density Dual Rail LCD KVM Switch
- KH1516 Cat 5 High-Density KVM Switch
- KVM Adapter Cables
- CN8000* KVM on the NET™
- PN5212 or PN5320 Power Over the NET™

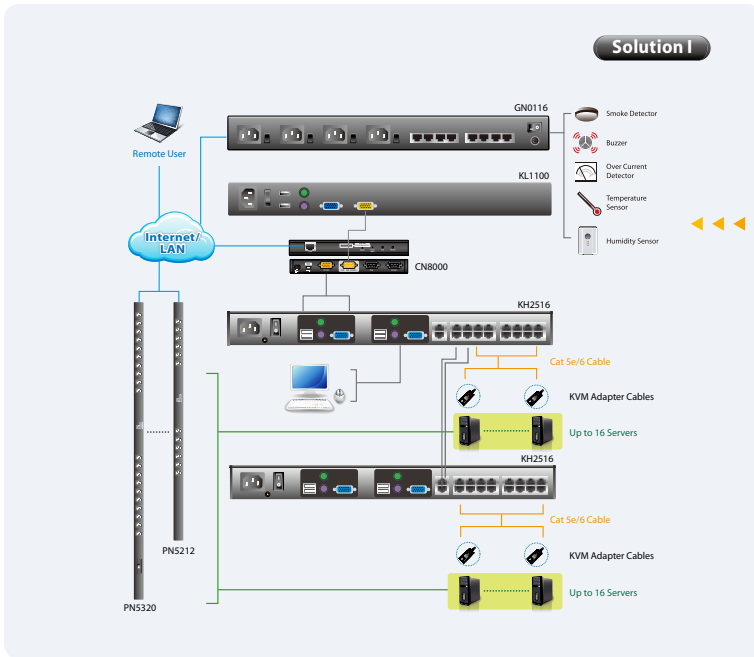
Integrates an LCD console with a Cat 5 KVM Switch

Solution II

- KL1100 Dual Rail LCD PS/2-USB Console
- KH1516i Cat 5 High-Density KVM Over the NET™
- KH1516 Cat 5 High-Density KVM Switch
- KVM Adapter Cables
- PN9108 or PN5212 or PN5320 Power Over the NET™

Cat 5 KVM Switch with over-IP functionality





Solution I

Server Room C

- ▶ Location: Singapore
- Size: Medium
- Servers: 32-64
- Consoles: 2

◀◀◀◀◀◀ **Solution I**

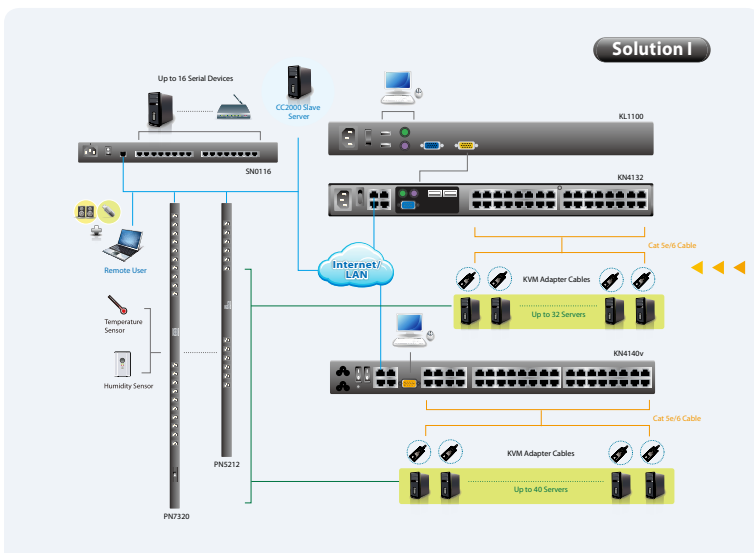
- KL1100 Dual Rail LCD PS/2-USB Console
- KH2516 2-Console Cat 5 High-Density KVM Switch
- KVM Adapter Cables
- CN8000* KVM on the NET™
- PN9108 or PN5212 or PN5320 Power Over the NET™
- GN0116 Guardian Over the NET™

Non-blocked Access

Solution II

- KL1100 Dual Rail LCD PS/2-USB Console
- KN2116A or KN2132 or KN2124v or KN2140v KVM Over the NET™
- KVM Adapter Cables
- PN5212 or PN5320 Power Over the NET™
- GN0116 Guardian Over the NET™

IP-Based KVM Solution



Solution I

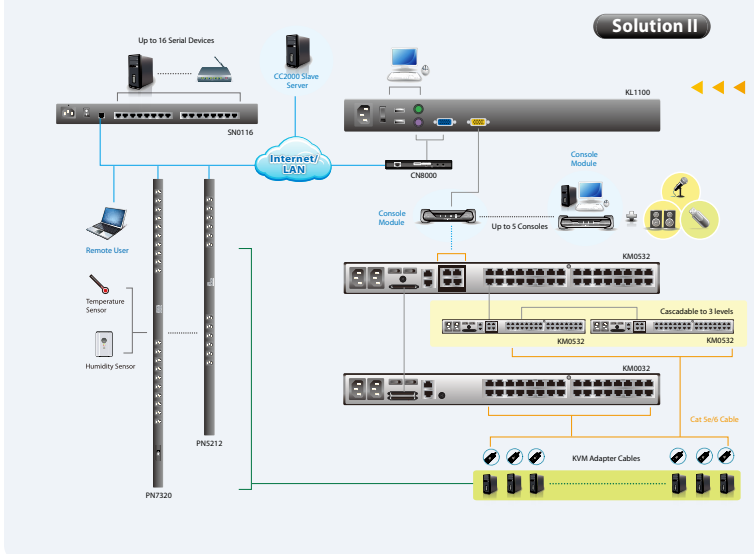
Server Room D

- ▶ Location: Moscow
- Size: Medium to Large
- Servers: 64-128
- Consoles: 4

◀◀◀◀◀◀ **Solution I**

- KL1100 Dual Rail LCD PS/2-USB Console
- KN4116 or KN4132 or KN4124v or KN4140v KVM Over the NET™
- KH1508 or KH1516 Cat 5 High-Density KVM Switches
- KVM Adapter Cables
- PN7212 or PN7320 Power Over the NET™
- SN0116 Serial Over the NET™
- CC2000 Slave (Redundant)

IP-Based KVM Solution
 • 4 Remote Buses
 • Panel Array Mode



Solution II

◀◀◀◀◀◀ **Solution II**

- KL1100 Dual Rail LCD PS/2-USB Console
- KM0532 – 5-Console 32-Port Matrix KVM Switch
- KM0032 – 32-Port Matrix Expansion KVM Switch
- Console Modules & KVM Adapter Cables
- CN8000* KVM on the NET™
- PN7212 or PN7320 Power Over the NET™
- SN0116 Serial Over the NET™
- CC2000 Slave (Redundant)

Console Extension
 • Ultimate Security
 • High Quality, Real-time Video Sessions

* The CN8000 from ATEN is an ultra-compact, Over IP solution for remote access to computers and KVM installations. Please see ATEN catalog or www.aten.com for more details.

Server Room E

Location: New York

Size: Large

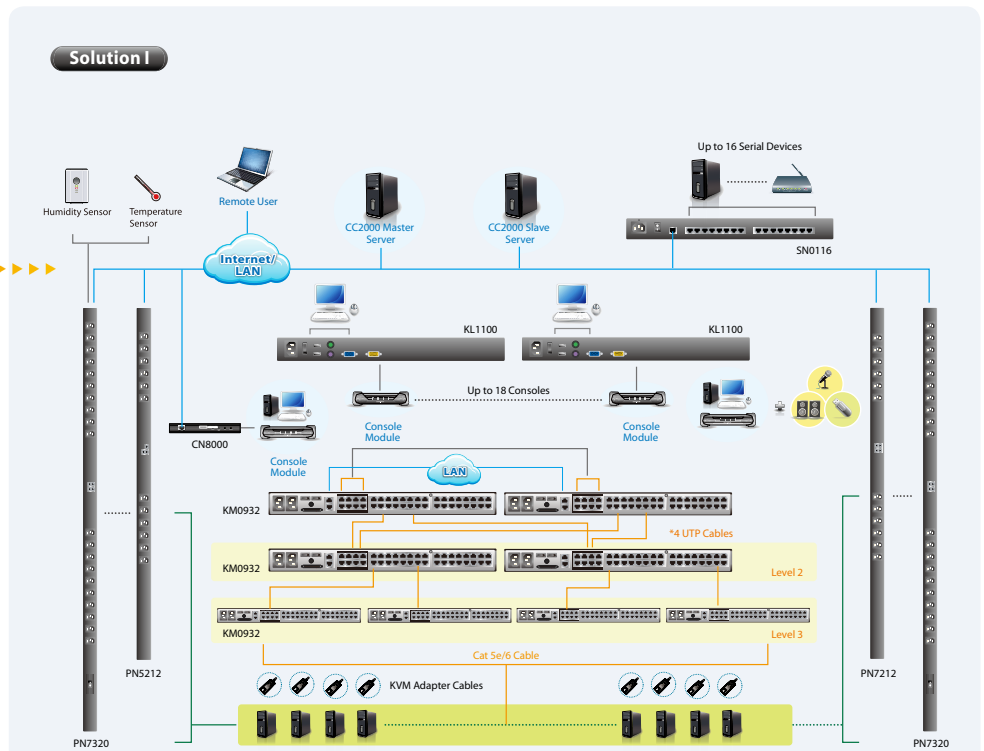
Servers: 128 +

Consoles: 4 +

Solution I

- KL1100 Dual Rail LCD PS/2-USB Console
- KM0932 – 9-Console 32-Port Matrix KVM Switch
- KM0032 – 32-Port Matrix Expansion KVM Switch
- Console Modules & KVM Adapter Cables
- CN8000* KVM on the NET™
- PN7212 or PN7320 Power Over the NET™
- SN0116 Serial Over the NET™
- CC2000 Master & License Key
- CC2000 Slave (Redundant)

- Console Extension
- Ultimate Security
- High Quality, Real-time Video Sessions
- Dual Root Configuration for Console Expansion

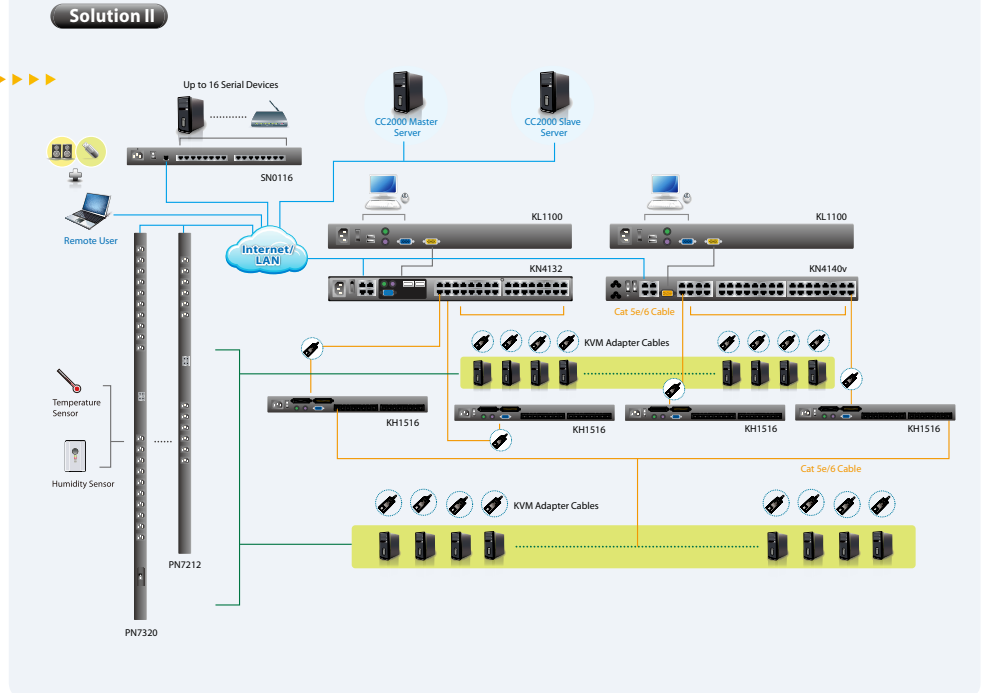


Solution II

Solution II

- KL1100 Dual Rail LCD PS/2-USB Console
- KN4132 or KN4140v KVM Over the NET™
- KH1508 or KH1516 Cat 5 High-Density KVM Switches
- KVM Adapter Cables
- PN7212 or PN7320 Power Over the NET™
- SN0116 Serial Over the NET™
- CC2000 Master & License Key
- CC2000 Slave (Redundant)

- IP-Based KVM Solution
- 4 Remote Buses with Independent Bus Switching
- 32 Concurrent Remote Logins
- Panel Array Mode



* The CN8000 from ATEN is an ultra-compact, Over IP solution for remote access to computers and KVM installations. Please see ATEN catalog or www.aten.com for more details.