

mBox™ 2000 Series Datasheet



The mBox 2000 Series are multi-service, multi-function and multi-purpose Unified IP Communications & Applications Internet appliances that deliver true convergence of data, voice, video and IT applications at the customer premise. The mBox 2000 Series appliances pre-integrate a simple and modular solution to organizations' ICT needs including Broadband gateway, shared and secured Internet access, telephony, data backup, security, remote access, resource sharing, email, web servers, collaboration applications and network access control. Simply put once an mBox 2000 Series appliance is installed, no additional hardware or software is required to set up a secure office network, establish Web presence, connect branch offices and protect company data.



mbox™ 2010

Entry-level platform optimized for small enterprises and Branch offices providing flexible and modular support for integrated Broadband connectivity and traditional telephony support.



mbox™ 2011

Entry-level increased-performance platform optimized for small enterprises and Branch offices with limited connectivity options with no traditional telephony support.



mbox™ 2012

Entry-level increased-performance platform optimized for small enterprises and Branch offices providing flexible and modular support for integrated Broadband connectivity and traditional telephony support.



mbox™ 2020

Mid-range and dual-core processor platform with increased performance optimized for medium enterprises and organizations providing flexible and modular support for integrated Broadband connectivity and traditional telephony support.



mbox™ 2040

High-performance, multi-core processor based platform optimized for central sites and head-quarters of Large enterprises concentrating 1000's of VPN connections. Aimed at large enterprises and organizations.



mbox™ 2000 Series

ALL-IN-ONE MULTI-SERVICE INTERNET APPLIANCES

All-in-one, multi-function, versatile, secure Internet appliance with integrated feature-rich, flexible and reliable applications and managed services for Small, Medium & Large Enterprises and their Branch Offices

Product Highlights

The mBox 2000 Series appliances provide fully integrated computing and Broadband networking - including Web, gateway, phone, email, network, print, security, storage, resource sharing, collaboration, network access control and a whole lot more - in one easy to deploy and use platform.

- Support for a wide-range of connectivity options including Gigabit Ethernet, FTTx, xDSL, 3G/UMTS, WiFi, WiMAX & Telephony
- QuickStart menu for fast-track setup in less than 1 minute!
- Embedded architecture offering small footprint
- Delivery point for mRepublic managed ICT services at customers' premise
- Powered by Msona's robust and trusted Linux-based operating system, mOS
- Reduces carbon footprint by replacing up to eight standalone IT and communication devices

UNLOCKS FULL POTENTIAL OF TRUE CONVERGENCE BETWEEN NETWORKING, TELECOMMUNICATIONS AND IT

Features and Benefits



Share Internet Resources

Broadband Gateway

- DHCP
- NAT
- Static IP Routing

Through one unified and integrated appliance connected to the Internet via Broadband, all network users can quickly and easily share Internet connectivity. Network Address Translation (NAT) allows for sharing of Internet access and use of private IP addresses on the LAN.



Secure Internet Access

Security

- Firewall
- Intrusion Detection & Prevention

The network is protected from outside attacks with state-of-the-art firewall system working together with intelligent intrusion detection and protection system.



Internet Presence and Communication

Web & Networking

- Web Server
- Resource Sharing
- FTP Server
- LDAP Server

Provides all the necessary tools and applications to secure Internet presence, a key critical requirement to compete and win in the 21st Century. Local and remote users can securely access all network resources including storage devices, files and printers.



Unified Communications Infrastructure

Convergence of Voice and Data

- Full-featured PBX delivering many telephony features
- Support for wide range of terminals: Analog, ISDN, IP phones and softphones, wireless (Wi-Fi), and IP DECT
- Auto-provisioning of IP Phones
- Interface support for FXS, FXO, BRI (Q3'10)

Provides a fully integrated enterprise-level voice services with professional call handling capabilities such as Automatic Call Distribution, hunt groups, auto attendant, digital receptionist, IVR, voicemail to E-mail forwarding..etc.



Eliminate Costly Interruption to Business Operations

Business Continuity

- Back-up & Anti-Virus
- Redundant Internet Connectivity
- Load-balancing/sharing
- Quick Back-up & Recovery

Increases business uptime by guarding company's electronic assets safe, protecting resources, supporting resilient Internet connections from different ISPs and providing quick and seamless recovery procedure.



Seamless Integration with Windows® Environment

Windows® Workgroups & Domains Support

Transparent connectivity with Microsoft Windows® networks for sharing files and network resources with full support for Workgroups and Domains.



Network Protection

Network Access Control (NAC)

- 802.1x Authentication
- MAC-based Authentication (Allied Telesis switches only)
- Web-based Authentication (Q3'10)

Network Access Control seamlessly controls access admission over wired and wireless networks and protects it from the inside by monitoring and enforcing endpoint security. It controls who can go where on the network and detects and isolates rogue devices. It can also provision limited network access for contractors and guests. (NAC is optional)



Round-the-clock Collaboration

Email & Groupware

- Integrates robust Email Server
- Microsoft Outlook®-compatible infrastructure
- Webmail access
- Email logging for Regulatory Compliance

Improves communications and productivity through a Microsoft Exchange®-like e-mail and groupware server experience. Users can seamlessly access emails and share calendars, contacts, tasks, folders, company news internally or remotely. In addition, Anti-Virus and Anti-Spam filtering is provided through subscription to mRepublic managed services*.



Quick Setup and Management

Intuitive Web Management GUI

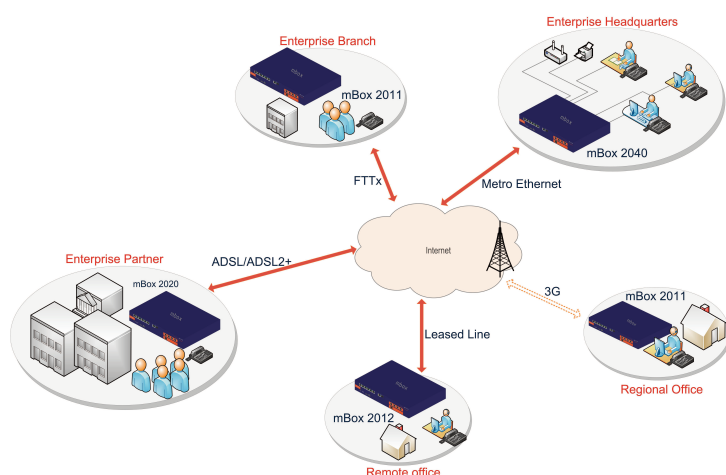
No technical skills are needed to quickly set-up the mBox system via Web-based QuickStart tool and configuration menus.



Ease of Use and Administration

Radical Simplicity

Quick deployment and management of ICT infrastructure including Broadband connection, email & web servers, security and resource sharing for maximum productivity and efficiency.



“DELIVERY POINT” AT CUSTOMER PREMISE FOR OPEN, CUSTOMIZABLE, SECURE, MANAGED, MULTI-SERVICE AND CONVERGED ICT INFRASTRUCTURE



Location-Independent Secure Network Access

Secure Remote Connectivity (VPN)

- Remote Access for mobile users
- Office-to-Office Connection

Users on the move and in branch offices can securely gain access to network resources, exchange information and share access to organization's ICT infrastructure.



Eliminate Cyberslacking & Enhance Quality of Experience (QoE)

Productivity & Responsiveness

- Web Proxy Server
- Content Filtering & Caching
- Single sign-on

Users are connected to the Internet with total control and security while reducing bandwidth usage and speeding up web browsing. Content filtering enforces Web usage policies and Caching improves response time and performance. Single sign-on gives users access to all resources and services - without being prompted to log in again - for better overall QoE of their ICT infrastructure.



mWatch Internet Traffic Monitoring (Q3'2010)

Increase Productivity and Ensure Regulatory Compliance

- Track Internet activity and usage
- Logging of Internet Traffic
- Real-time Monitoring of Web, Mail & Chat traffic

mWatch Internet Traffic Monitoring module provides the ability to monitor downloaded and transferred files (Web, FTP), sent and received emails (SMTP, POP3, IMAP, Gmail, Hotmail, Yahoo!) as well as sent and received chat messages (MSN, Yahoo!, ICQ, AIM, Jabber, Facebook, IRC). mWatch Internet Traffic Monitoring system stores all captured data in the mBox and presents it in a convenient and easy-to-read format. The application's intuitive user interface makes it an effective and easy-to-use tool and offers employers and government authorities full insight into all traffic passing through the mBox system.



Delivering mConnect™ 100 Series 3G Modems



High-performance 3G Modems offering 7.2Mbps downlink and 2.1Mbps uplink speeds coupled with tight integration with mBox 2000 Series. Ideal as main link in remote areas or as back-up for DSL or Fibre Broadband access.

Delivering mPhone™ family of IP Voice & Video Phones



mPhone M6730i IP Phone

M6730i: Entry level IP Phone with 2 lines, LCD Display and a range of calling features such as call forward, call transfer, call waiting, intercom & local 3-way conference.

M6731i: In addition to the features of M6730i, this mPhone Incorporates PoE support and a 2-port 10/100 switch.



mPhone M6755i IP Phone

High-end phone with larger LCD display and context-sensitive softkeys. Incorporates PoE support and 2-port 10/100 switch. Supports up to 9 simultaneous calls and a range of calling features such as call forward, call transfer, call waiting, intercom & local 3-way conference.



mPhone MV7360-1 IP Video Conferencing Phone

Delivers high-quality face-to-face voice and video calls including IPTV and VoD. Features 7" 800x400 Touch Screen Digital LCD display and 300K pixels rotatable sensor camera. Adopts H.264 codec and supports adaptive bandwidth adjustment technology.

Additional Products

Delivering mRepublic™ Managed Services

mRepublic is a family of value-add subscription-based managed ICT services delivered from Msona's mCloud™ service delivery network to mBox appliances and covering a wide range of applications including: networking, communications, security, collaboration, backup and service assurance.

Web Presence

- DNS Services
- Dynamic DNS Service

Mailbox Critical Services

- Mail Continuity Service
- Mail Sanitization Services (SaaS Anti-virus & Anti-spam)

Security Management

- Web Content Filtering Update
- Intrusion Detection / Prevention
- Security Audit

Software Management

- Software Updates & Maintenance

Collaboration & Networking

- mGroupware for Microsoft Outlook®

Content Management

- mStorage Remote Back-up

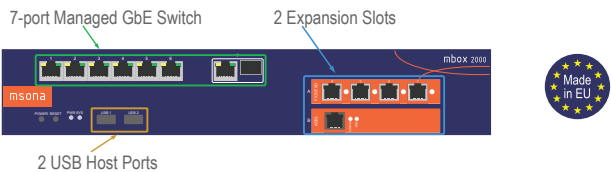
Service Assurance

- System Health Monitor
- Port Monitor
- Resource Monitor
- Weekly Report

Hardware Specifications

Base Unit

mBox 2000 Multi-service Internet Appliance
7 GbE Managed Ports (6 10/100/1000 Base-T & 1 Combo 10/100/1000 UTP/SFP)
2 Expansion Slots for Internal Expansion Service Modules**
2 USB Host 2.0 Ports



Device Characteristics

Switching Backplane	14 Gbps, Fully managed Layer 2 Gigabit Ethernet switch	
Supported Protocols	TCP/IP, DHCP, NAT, SIP, DNS, IMAP(S)/POP3(S), IPSec, OpenVPN, PPTP, HTTP(S), FTP(S), SSL, GRE	
Management	Graphical User Interface (mOS), Console via USB and central management for distributed mBox deployments (mCloud)	
Mounting Kit	19" rack/wall-mounting kit (ordered seperately)	
Power Supply	Internal AC/DC adapter Max Power Consumption	AC, 100-240V, 50-60Hz 90W
Environmental	Operating Temperature	mBox 2010: Min 0°C, Max 40°C All other models: Min 0°C, Max 35°C
	Operating Humidity	Max 80%, Relative, Non-condensing
	Storage Temperature Storage Humidity	Max -20°C, Max 70°C Max 95%, Relative, Non-condensing
Physical	Mounting Options	Desktop, Rack and Wall
	Dimensions Weight	66H mm (1.5U), 350W mm, 280D mm 5.5 kg
Approval & Certifications	Safety Emission Immunity	EN60950 EN55022 Class B EN55024 Class B
EC Community Design	European Community Design No. 001025225-0001/2/3/4/5/6	

Configuration Options

Internal Expansion Modules***	Telephony	4 FXS/FXO 2-port ISDN (Q3'10)
	xDSL	1-port ADSL/ADSL2+
External Modules (USB)	3G	1 3G/UMTS/GPRSa
	WiMAX	802.16/802.16e Fixed and Mobile
Storage	Enterprise Hard Drive	250 GB, 500 GB, 1 TB, 2 TB (RAID 1 optional)

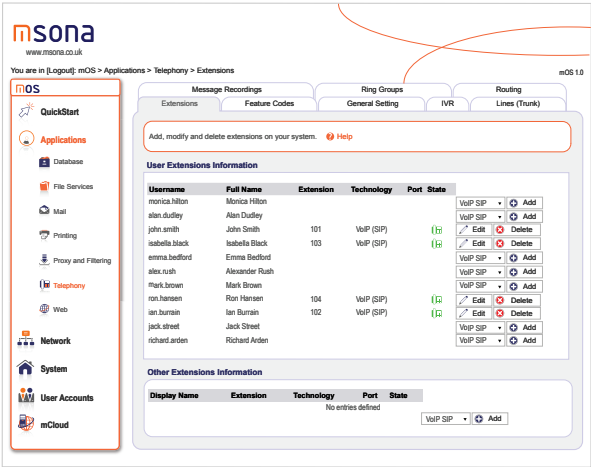
* Subscription to Mail Sanitization Services required.
** Not available on mBox 2011.
*** Check with Msona sales representative for availability in your region.

Technical Specifications

- Support for IEEE 802.1q VLAN (up to 16 VLANs)
- Support for 802.1x Private VLAN assignment
- Support for ACL (Access Control Lists)
- Integrates DHCP Server
- Support for Network Attached Storage (NAS) for backup and recovery
- IEEE 802.1x protocol for Network Access Control (optional add-on module)
- USB port for support of external storage / NAS for additional storage (Q3'2010)
- RIP dynamic routing support (Q4'2010)

Model	Internal Service Expansion Slots	Performance
mbox 2040	2 slots	High performance, quad-core processors
mbox 2020	2 slots	Medium performance, dual-core processors
mbox 2012	2 slots	Entry-level increased performance, dual-core processors
mbox 2011	No slots	Entry-level increased performance, dual-core processors
mbox 2010	2 slots	Entry-level basic performance, single-core embedded platform

Simple, intuitive and easy-to-use Web-based GUI for seamless and straight-forward configuration and management



Ordering Information

Please contact your local authorized Msona channel partner or visit us @ www.msona.co.uk.

