

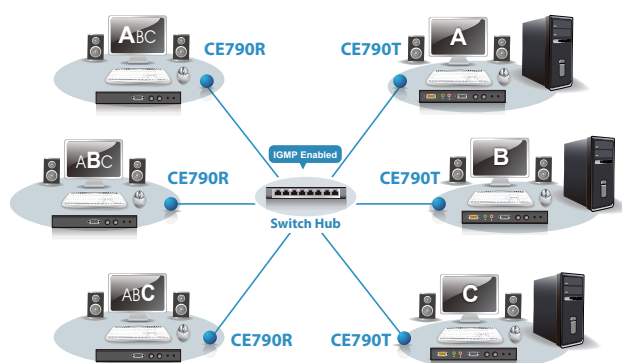
# CE790

## Digital KVM Extender

The CE790 is a IP based KVM Extender with automatic cable detection (Auto-MDIX) and RS-232 serial functionality that allows access to a computer system from a remote USB console (USB keyboard, monitor, and USB mouse) anywhere on the intranet.

The CE790 improves on previous designs by: 1) the addition of an intuitive On Screen Display (OSD) on both the transmitter and receiver units for easy setup and operation; 2) working over a standard TCP/IP LAN via inexpensive Cat 5e cable, allowing point-to-point, point-to-multipoint, and multipoint-to-multipoint administration without the need for an additional KVM switch; and 3) the addition of an RS-232 port, on both the transmitter and receiver Units – to connect to a serial terminal for configuration, and serial devices such as touchscreens and barcode scanners.

### Setup



\* The CE790 can be installed in point to point, point to multipoint and multipoint to multipoint configurations. Multipoint configurations require a separate purchase - contact your dealer for details.

\* In multipoint configurations, the IGMP (Internet Group Management Protocol) function of your network switches/hubs should be enabled to avoid deterioration of data throughput. If you do not know how to enable IGMP, please contact your network administrator.

### Features

- Remotely access computers on your KVM installation via intranet
- Dual console operation – control your system from both the transmitter and receiver USB consoles
- OSD (On Screen Display) on both the transmitter and receiver units
- No software required – an HTTP server is embedded in both units
- Built-in ASIC for greater reliability and compatibility
- USB Keyboard and USB Mouse Ports
- RS-232 serial ports – allows you to connect to a serial terminal for configuration, or serial devices such as touchscreens and barcode scanners
- Audio enabled
- USB overcurrent detection and prevention
- High resolution video – up to 1920 x 1080
- Supports widescreen formats
- Ultra-High quality video mode
- Hot pluggable
- Rack mountable
- Firmware upgradable
- Auto-MDIX – automatically detects cable type

### Specifications

Function		CE790T	CE790R
Connectors	Console Ports	Keyboard	1 x USB Type A Female (White)
		Video	1 x HDB-15 Female (Blue)
		Mouse	1 x USB Type A Female (White)
		Speaker	1 x Mini Stereo Jack Female (Green)
		Mic.	1 x Mini Stereo Jack Female (Pink)
	KVM Ports	Keyboard/ Video / Mouse	1 x SPHD-17 Female (Yellow)
		Speaker	1 x Mini Stereo Jack (Green)
		Mic.	1 x Mini Stereo Jack (Pink)
		RS-232	1 x DB-9 Female (Black) / 1 x DB-9 Male (Black)
		Power	1 x DC Jack
Pushbuttons	OSD	LAN	1 x RJ-45 Female (Black)
		OSD	1 x Pushbutton
	LEDs	Select	1 x Pushbutton
		Status	1 (Green / Orange)
Emulation	Keyboard / Mouse	Power	1 (Green / Red)
		Emulation	USB
	Power Consumption	Video	Up to 1920 x 1080
		Operating Temp.	0-50°C
Environment	Storage Temp	Storage Temp	-20-60°C
		Humidity	0-80% RH, Non-condensing
		Housing	Metal
	Physical Properties	Weight	0.50 kg / 0.48 kg
		Dimensions (L x W x H)	20.00 x 8.00 x 2.50 cm

\* The specifications and pictures are subject to change without notice.