

**5GHz 802.11ac 900Mbps TDMA Outdoor
Long Range Wireless CPE Kit**



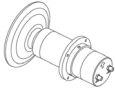





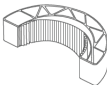




WBS-900AC-KIT
Quick Installation Guide

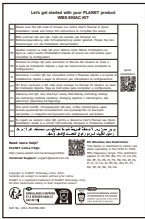

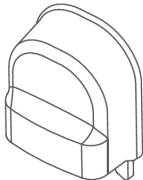
Table of Contents

1. Package Contents.....	3
2. Physical Introduction	5
3. Hardware Installation.....	6
4. Wired Network Configuration (Windows).....	8
5. Entering into the Web Management	9
6. Easy to Set Up TDMA mode (PtP) Connection.....	10
FURTHER INFORMATION.....	11

1. Package Contents

Thank you for choosing PLANET TDMA Outdoor Long Range Wireless CPE Kit. Before installing, please verify the contents inside the package box. The "WBS-900AC-KIT" mentioned here is the model name of the device.

WBS-900AC CPE x 2	Parabolic Reflector x 2	Antenna Feed x 2
		
L Clip x 2	Clip x 2	Square Clamp x 4
		
Hex Nut x 8	Nut x 4	Support Ring x 2
		
Screw & Gasket x 8	RF Cable x 4	Mounting Strap x 2
		
Screw x 8		
		

QR Code Sheet	AP Stand x 2	Waterproof Cover x 2
		



Note

If there is any item missing or damaged, please contact the seller immediately.

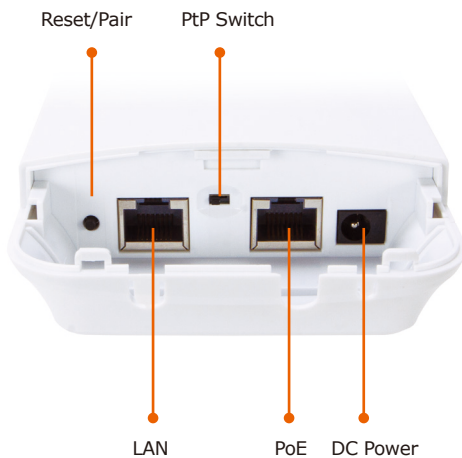


IMPORTANT SAFETY PRECAUTIONS:

1. **LIVES MAY BE AT RISK!** Please be aware of the electrical wires around. Carefully read the section “**OUTDOOR INSTALLATION WARNING**” in the manual before installation.
2. Users **MUST** complete grounding wired with the device; otherwise, a sudden lightning could cause fatal damage to the device. **EMD (Lightning) DAMAGE IS NOT COVERED UNDER WARRANTY.**

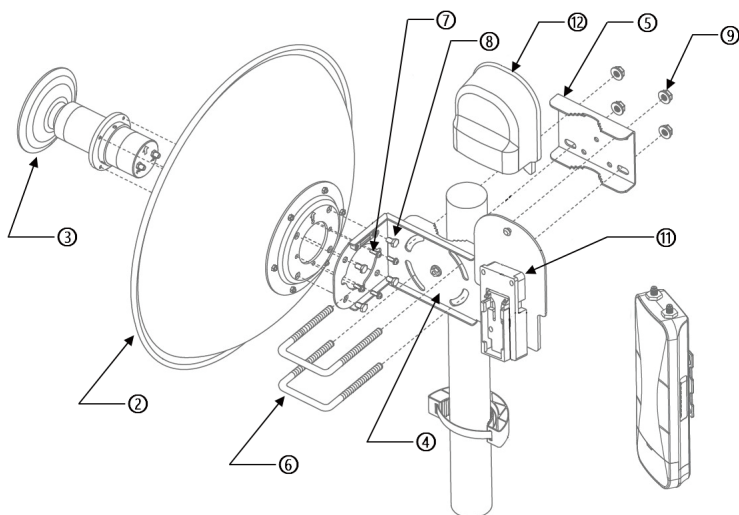
2. Physical Introduction

Hardware Description

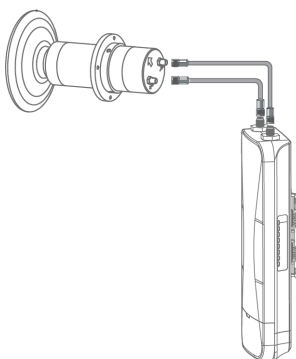


3. Hardware Installation

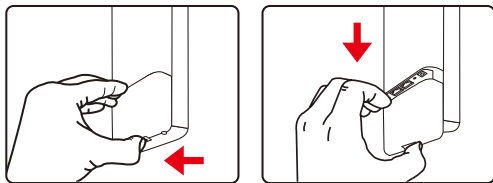
Step 1: Installing Antenna Set and AP Stand



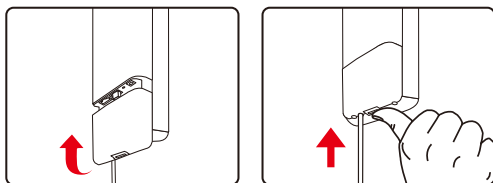
Step 2: Connecting Antenna to CPE with RF Cable



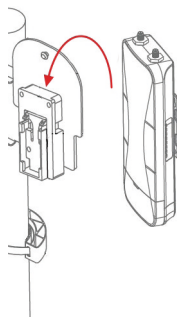
Step 3: Push the latch on the bottom of the Outdoor Wireless CPE to remove the sliding cover.



Step 4: Plug the RJ45 Ethernet cable into the PoE Port of the Outdoor Wireless CPE. Then, slide back the cover to finish the installation.



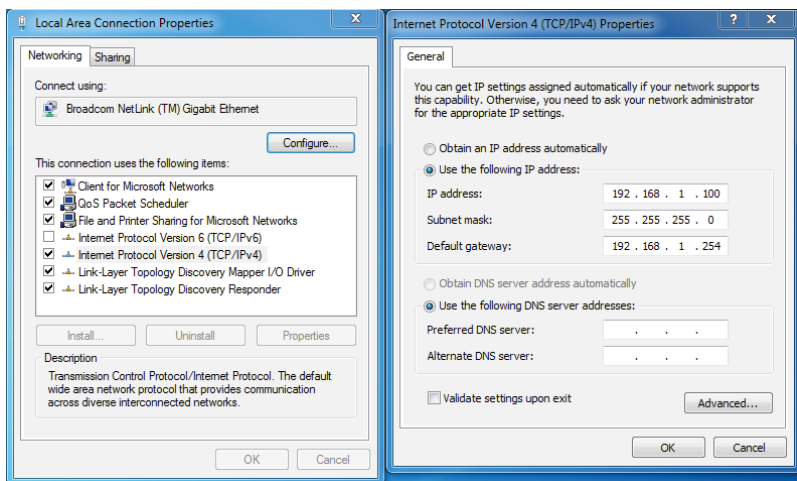
Step 5: Place the Outdoor Wireless CPE on the AP stand



4. Wired Network Configuration (Windows)

A computer with wired Ethernet connection is required for the first-time configuration of the Wireless AP.

1. Click the **"Start"** button located at the lower-left corner of your computer.
2. Select **"Control Panel-> Network and Sharing Center"**.
3. Click **"Change adapter settings"**.
4. Double-click **"Local Area Connection"**.
5. Select **"Internet Protocol Version 4 (TCP/IPv4)"** and click **"Properties"**.
6. Select **"Use the following IP address"** to configure the IP address to **"192.168.1.x"** ("x" can be any number from 2 to 254, except 253) and then click the **"OK"** button to save the configuration.



5. Entering into the Web Management

Default Master IP Address: **192.168.1.253**

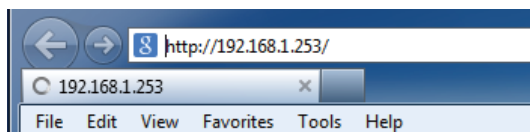
Default Slave IP Address: **192.168.1.100**

Default Username: **admin**

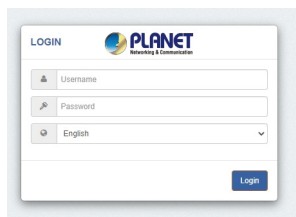
Default Password: **admin**

Default SSID: **PLANET_5G**

Step 1: Launch the Web browser and enter the default Master IP address **http://192.168.1.253**.



Step 2: The default username and password are "**admin**". Then click the **LOGIN** button to continue.



Note

For security reasons, it is recommended to change the password at the first login and memorize it.

6. Easy to Set Up TDMA mode (PtP) Connection

- Step 1:** (1) Position **"Slave"** to **"Master"** on the **master AP**. Stay in **"Slave"** on the slave AP.
- (2) Press the **"Reset/Pair"** button within 2 minutes on both sides.
- (3) The connection will be established easily.

3 Steps to Set Up TDMA Mode (PtP) Connection



Note

The connection should be established within 2 minutes, and when complete, the signal strength LED will light up. The LED will display 1 to 4 lights based on the signal strength, with all 4 LEDs indicating a strong signal.

FURTHER INFORMATION

The above steps introduce the simple installations and configurations of the device. For further configurations, please refer to the user manual, which can be downloaded from the website.

WBS-900AC-KIT:

<https://www.planet.com.tw/en/support/downloads?&method=keyword&keyword=WBS&view=3#list>

