




Universal Network Management Solution

NMS-1000V-10/12		NMS-500	UNI-NMS	Cloud-based Monitoring App
Product Image				
Touch LCD Screen	10.1"/12.1" TFT-LCD	-	-	-
Management Controller Specifications				
Max. Manageable Devices	1,024	512	100,000	20
Resolution	1024 x 768	1280 x 1024	1280 x 1024	* For all mobile screen resolutions
Dashboard	●	●	●	-
Discovery	●	●	●	●
Devices Status Monitoring	●	●	●	●
Topology Management	●	●	●	-
Web Management	●	●	●	-
Fault Management	●	●	●	-
Configuration Management	●	●	●	-
Performance Management	●	●	●	-
Security Management	●	●	●	●
Web client: HTTPS support	●	●	●	-
Touch Wizard	●	●	-	-
Alert Pop Window	●	●	-	-
IP Cam Video Screenshot	●	-	-	●
Product Reference	●	●*1	-	-
Floor Map	●	●	●	-
Multi-languages	●*1	●*1	-	-
Built-in DHCP Server	●	●	-	-
SSIDs-to-VLANs Mapping	●	●	●	-
802.1X RADIUS Authentication	●	●	-	-
PLANET DDNS / Easy DDNS	●/●	●/●	-	-
Port Configuration	●	●	-	-
System Profile Backup/Restoration	●	●	●	-
AP Controller SPEC				
Max. Manageable APs	1024	512	256	-
Max. Concurrent Clients	10,000+	10,000+	5,000+	-
Max. AP Groups	128	64	32	-
Max. SSID Profiles	128	64	32	-
Max. Radio Profiles	64	32	16	-
Max. RADIUS User Accounts	20,000	10,000	10,000	-
Max. RADIUS User Groups	50	25	25	-
Max. RADIUS Clients	1024	512	512	-
AP Controller Related Features				
AP Discovery	●	●	●	-
AP Control, Cluster Management	●	●	●	-
AP Status Monitoring	●	●	●	-
Real-time Graphical Statistics	●	●	●	-
SSID/RF Profile Creation	●	●	●	-
Bulk AP Provisioning/Delivery	●	●	●	-
Bulk AP Firmware Upgrade	●	●	●	-
Supported Network Devices	All Managed Switches and Routers			
	<b>Wireless APs</b> WDAP-W750E      WNAP-C3220E      WBS-200N WDAP-W7200AC      WBS-202N      WDAP-702AC WDAP-C7200AC      WBS-502N      WAP-200N WNAP-C3220A      WAP-552N      WAP-500N WNAP-W2201A      WAP-252N      WBS-500N WNAP-W2200UE      WDAP-802AC      WBS-512AC WDAP-C7200E      WBS-502AC      WDAP-C7210E			<b>Switches</b> GS-4210-24T2S(V2)      IGS-10020HPT(V3) GS-4210-16T2S(V2)      IGS-10020MT(V3) GS-4210-8P2S(V2)      IGS-20040MT(V2) GS-4210-24PL4C(V2)      IGS-20160HPT(V2) GS-4210-24P4C(V2)      IGS-5225-4P2S GS-4210-16P2S(V2)      IGS-6325-8UP2S2X GS-6320-24UP2T2XV
	<b>IP Cameras</b> ICA-E3550V      ICA-E626S      ICA-4200V      ICA-3250      ICA-A3280 ICA-E5550V      ICA-M3380P      ICA-3250V      ICA-4250      ICA-A4280 ICA-E8550      ICA-M4320P      ICA-3150      ICA-3280      ICA-M3580P ICA-E6260      ICA-M5380P      ICA-4150      ICA-4280      ICA-M4580P			<b>Router</b> VR-100

Remarks:  
\*1. Future feature supported through firmware/patch upgrade  
\*2. External RADIUS Server is required



11F., No. 96, Minquan Rd., Xindian Dist., New Taipei City 231, Taiwan (R.O.C)  
Tel: +886-2-2219-9518    Fax: +886-2-2219-9528    E-mail: sales@planet.com.tw  
PLANET reserves the right to change specifications without prior notice. All brand names and trademarks are property of their respective owners.  
© PLANET Technology Corporation DM-NMS0121



Universal Network Management Solution



**NMS-500**  
Universal Network Management Controller

" data-bbox="675 454 725 513"/>

**NMS-1000V 10"/>"**  
Touch Screen LCD Universal Network Management Controller



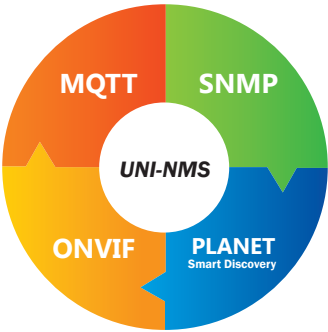
**PLANET CloudViewer**  
Cloud-based Monitoring App

A Smarter Way to Centrally Manage All Network Devices

Key to maximizing network management efficiency

PLANET Network Management System (NMS) Solution successfully integrates MQTT, SNMP, ONVIF protocol and PLANET Smart Discovery to enable administrators to monitor and further manage all kinds of networking devices, including Ethernet switches, PoE equipment, wireless access points, and VoIP and IP surveillance devices.

The system scalability is workable now that NMS solution allows users to control over 200 sites and 200 floor maps, with 500 nodes per site; in the same system, users are able to set up a maximum of 128 AP groups, 128 SSID profiles, 1024 managed APs and 20,000 clients. Through its user-friendly dashboard and user authentication, UNI-NMS guarantees the smartest and most secure remote management across different network protocols.



Centrally Manage All Network Devices via One Platform

VoIP, IP Cameras, Switches, APs, Routers,...



**25/50**  
Floor Maps



**14**  
Device Types



**64/128**  
AP Groups



**Manage 512/1024**  
Devices

Features

**Node Discovery**  
To detect PLANET managed devices available and allow AP grouping to accelerate AP management.

**Topology Viewer**  
A topology of network devices compliant with SNMP, ONVIF, Smart Discovery and LLTD Protocol.

**Event Reports**  
The status of a network can be reported via network alarm, system log, and SNMP trap.

**USB Backup**  
Back up system profiles simply with a USB to prevent possible data loss. (NMS-500 & NMS-1000V)

**Authentication**  
Built-in RADIUS server seamlessly integrated into the enterprise network

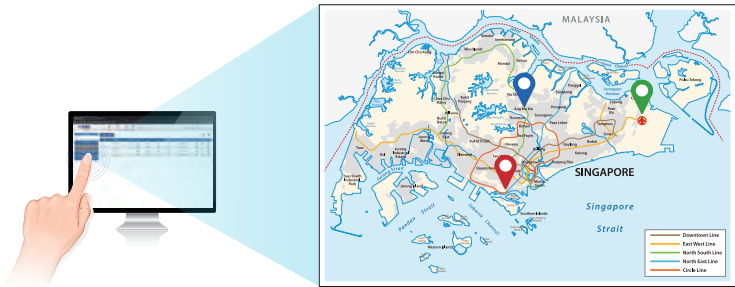
**SMTP Alert**  
To send an email alert to the administrator via the SMTP server.

**Zone Plan**  
Optimizing AP deployment with actual signal coverage.

**Oracle Virtual Box**  
Employing Oracle VM technology to enhance operation flexibility. (UNI-NMS)

Real-time Centralized Monitoring

As the UNI-NMS can come out with a topology view of the network of the deployed powered devices, it enables to detect which device is online (blue) or offline (red). The real-time centralized monitoring of these devices can help the administrator to know what the current statuses of these devices are. As shown on the right, it comes with the mapping function that enables to detect the location of each network site.



Cost-effective Central Network Management Solution for SMBs

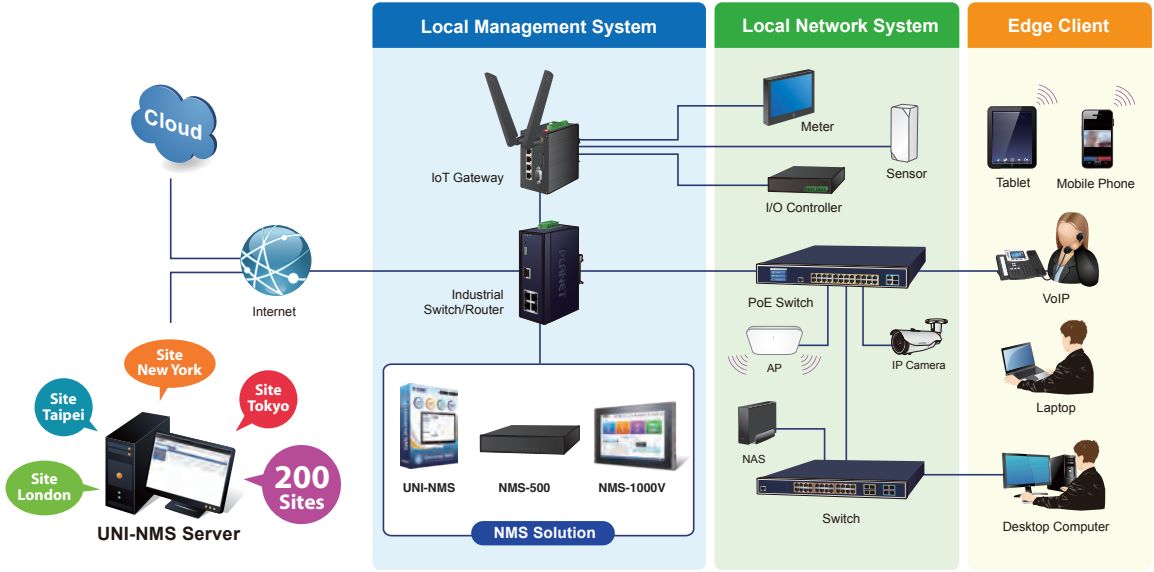
PLANET Network Management Solution helps service providers and IT managers control all PLANET network device through a single platform. It also enables SMB IT administrators to effectively manage a local network of up to 512/1024 managed nodes and 200 sites simultaneously.

The NMS automatically discovers and configures device profiles, batch provisioning and firmware upgrade. With its built-in SAPC (Smart AP Control) function, users are able to customize their own Wi-Fi plan on the basis of actual floor maps, and further monitor all managed APs via a single Web-based interface. To overcome the challenge of manually configure wireless APs one at a time, cross-platform operation through virtualization software greatly saves SMBs both time and money.

Wireless AP Controller Features		System Management	Management IP/port Login account modification System upgrade
Encryption Type	64/128-bit WEP, WPA, WPA-PSK, WPA2, WPA2-PSK, 802.1x Authentication	System Requirements	
Wireless Security	Enable/Disable SSID Broadcast AP Isolation	Minimum Hardware Requirements	CPU: Intel Core i5 3.4 GHz dual-core or above RAM: 4 GB minimum HDD: 200 GB (actual requirement is dependent on log size)
Multiple SSIDs per Frequency Band	Up to 5	OS Supported	Microsoft Windows 7/8/8.1/10 *Mac OS X 10.8/10.9/10.10/10.11 Note: supported OS is dependent on virtualization product
RF Control	Output power Auto channel Traffic shaping per frequency band IAPP L2 roaming	Virtualization	Oracle VirtualBox 5.0 or later
System Management Features		Browser Supported	Chrome 31.0 or later
Management Interface	Web-based user interface		

Remarks: \* New features will be added through system updates.

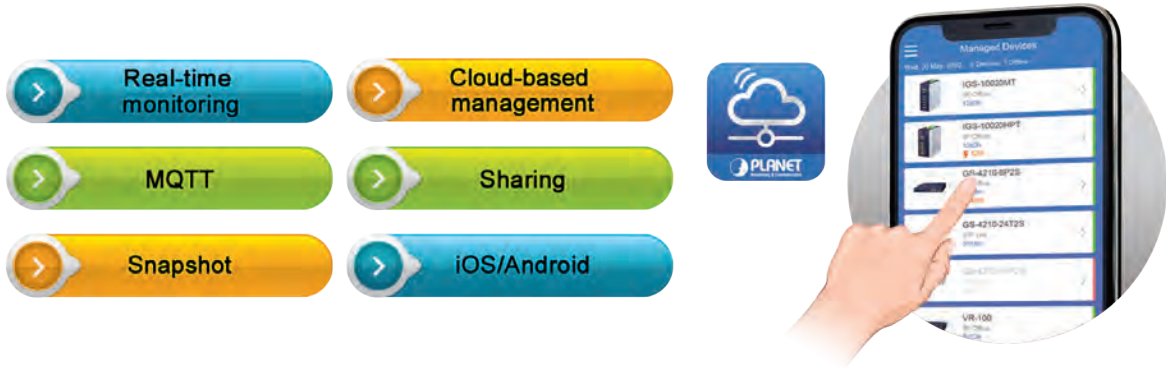
Applications



Intelligent Decentralized Management with PLANET CloudViewer App

Intuitive Mobile User Experience with Cloud Network

PLANET CloudViewer is an Intelligent App to monitor your network in the cloud. With cloud network, it makes data and services available from anywhere with an Internet connection. With PLANET CloudViewer, your network status can be monitored in real time anytime, anywhere via your mobile phone or tablet. User can easily check network status, device information, and port and PoE statuses from the cloud to reduce management costs.



Sharing Access Authority for Easy Collaboration

Device owners can share their authority of device monitoring to team members via PLANET CloudViewer App. It benefits your shared members by collaborating without complicated account setting and can monitor device anytime, anywhere as device owners.

