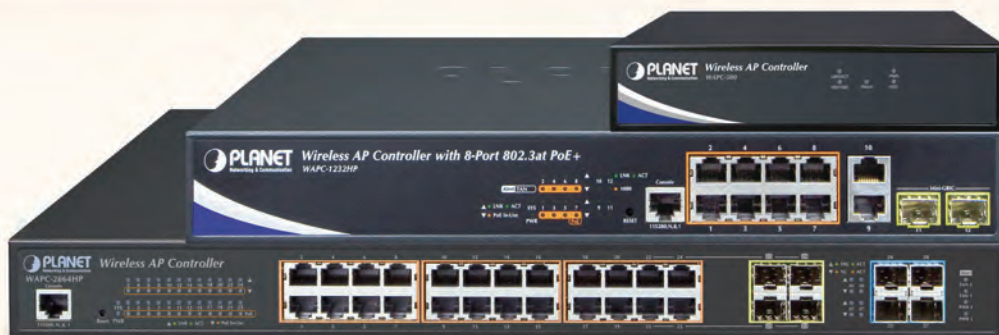




Ceiling-mount AP

Wireless AP Management Solution

► WAPC-1232HP / WAPC-2864HP / WAPC-500



► Wireless AP Controller

Optimizing Wireless Network within Minutes
Control over **500** APs



Graphical Statistics

Dashboard

Zone Plan

Efficiently Centralized AP Management

When deploying a large number of wireless APs in buildings such as hotel, villas, resorts and more, PLANET Wireless AP Management Solution enables service providers and IT managers to centrally manage up to 500 APs in different locations at the same time. The administrator can automatically discover, configure, update and monitor all the managed APs through one single browser-based web user interface without configuring each AP one by one, thus greatly enhancing the wireless network management efficiency.



Ultra-high-speed Wireless Mobility Solution

PLANET 802.11ac Wireless Solution provides ultra high-speed wireless transmission for enterprise, SOHO and industrial networking deployments. With its outstanding stability of high-speed wireless transmission and enhanced reliability, the 802.11ac Wireless Solution can provide users with excellent multimedia streaming through their mobile devices anywhere, anytime.



Reliable Wireless Data Transmission

PLANET Outdoor Wireless Solution featuring 2.4GHz/5GHz dual band wireless communications provides higher transmit power, better performance, wider coverage and stable connection for all kinds of outdoor applications.

All-Weather Protection for Outdoor Environment

With the IP66-rated, rugged aluminum housing and operating temperature ranging from -40 to 70 degrees C, PLANET Outdoor Wireless Solution can perform normally under rigorous weather conditions, including heavy rain, wind and snow.



Wireless AP Management Solution

PLANET Wireless AP Management Solution offers multiple ways of central AP management with Hardware AP Controller, Software AP Controller and Firmware AP Controller. The solution enables you to control up to 500 APs in different indoor or outdoor locations at the same time. Featuring the friendly floor plan, dashboard and graphical statistic functions through one single browser-based web user interface, the administrator can easily discover, configure, update and monitor all the managed APs.

Hardware AP Controller

WAPC-500

Wireless AP Controller

- AP auto-discovery
- Control up to 512 APs
- Central provisioning and cluster management
- Easy deployment with map positioning
- Real-time AP status monitoring
- Rogue AP detection
- User authentication and MAC ACL
- Customized captive portal
- Profile creation and maintenance
- Online firmware detection and batch upgrade
- Supported AP Models: WDAP-C7200E, WDAP-W7200AC, WNAP-C3220E, WNAP-W2200UE, WDAP-C7200AC, WNAP-C3220A, WNAP-W2201A, WDAP-702AC, WDAP-802AC, WAP-200N, WAP-252N, WAP-500N, WAP-552N, WBS-200N, WBS-500N, WBS-502AC



CS-950

UTM AP Controller

- Control up to 50 APs
 - Central provisioning and cluster management
 - AP settings delivering at a time
 - User-defined SSID sorting per AP
 - Configurable AP management account
 - User authentication and MAC ACL
 - Customized captive portal
 - Unified security gateway with VPN connectivity
 - Advanced anti-virus and anti-spam services
 - IDP service and content filtering
 - Supported AP Models: WDAP-702AC, WBS-200N, WAP-200N
- *Check our company website for more updated supported AP models.



WAPC-2864HP

Wireless AP Controller with 24-port PoE+

- AP discovery up to 64 managed APs
- 24 built-in 802.3at PoE+ ports to directly manage AP power control
- AP/PD alive check for operating status diagnostics
- 440-watt PoE budget
- 4 10G SFP+ uplink interfaces
- IPv6/IPv4 Layer 3 static routing
- Supported AP Models: WDAP-C7200AC, WDAP-W7200AC, WNAP-C3220A, WNAP-W2201A



WAPC-1232HP

Wireless AP Controller with 8-port PoE+

- AP discovery up to 32 managed APs
- Eight built-in 802.3at PoE+ ports to directly manage AP power control
- AP/PD alive check for operating status diagnostics
- 240-watt PoE budget
- Supported AP Models: WDAP-C7200AC, WDAP-W7200AC, WNAP-C3220A, WNAP-W2201A



Software AP Controller

Smart AP Control (SAPC)

- AP auto-discovery
- Control up to 256 APs
- Central provisioning and cluster management
- Easy deployment with map positioning
- Real-time AP status monitoring
- Profile creation and maintenance
- VM-based control, cross platforms
- Free license fee
- Supported AP Models: WDAP-C7200E, WDAP-W7200AC, WNAP-C3220E, WNAP-W2200UE, WDAP-C7200AC, WNAP-C3220A, WNAP-W2201A, WDAP-702AC, WDAP-802AC, WAP-200N, WAP-252N, WAP-500N, WAP-552N, WBS-200N, WBS-500N, WBS-502AC



Firmware AP Controller

Network Management System (NMS)

- AP auto-discovery
- Control 1 to 5 APs (the same model required)
- Central provisioning and cluster management
- Easy deployment with map positioning
- Real-time AP status monitoring
- Profile creation and maintenance
- Supported AP Models: WDAP-C1750, WDAP-1750AC

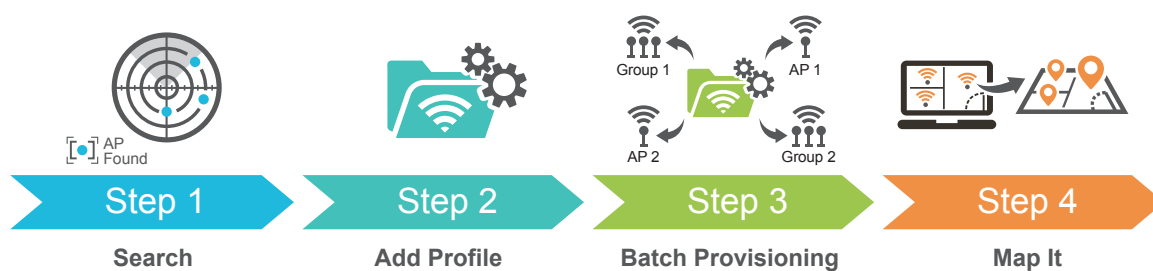


Smart AP Control

AP Management Just Got Easier, More User-friendly & More Usable



Simplified Cluster Management with 4 Steps





Enterprise Wi-Fi Networking Solution

PLANET enterprise PoE access points feature the latest 802.11ac wireless technology, advanced management functions and superior encryption standard yet cost-effectiveness. Meeting today's demand for advanced performance and security, PLANET enterprise PoE access points include multiple SSIDs, WPA/WPA2, RADIUS MAC authentication and so forth. It is the perfect choice for homes, SOHOs, hotels, and offices to allow you to check e-mail and surf the Internet via the 2.4GHz band and simultaneously watch high-definition (HD) video or any other multimedia application via the 5GHz band.

Enterprise Wireless Access Points

WDAP-1750AC

1750Mbps 802.11ac Wireless AP

- Simultaneous dual-band connectivity in 2.4GHz 450Mbps and 5GHz 1300Mbps
- Gigabit Ethernet ports, one port 802.3at PoE/PD and one port 802.3af PoE/PSE supported
- Built-in RADIUS server
- 802.1Q VLAN tag over WDS and 32 multiple-SSIDs
- Centrally managed by PLANET Firmware AP Controller



WDAP-C1750

1750Mbps 802.11ac Wireless AP

- Simultaneous dual-band connectivity in 2.4GHz 450Mbps and 5GHz 1300Mbps
- Gigabit Ethernet port, 802.3at PoE/PD supported
- Built-in RADIUS server
- 802.1Q VLAN tag over WDS and 32 multiple-SSIDs
- Centrally managed by PLANET Firmware AP Controller



WDAP-C7200E

Dual Band 1200Mbps 802.11ac Wireless AP

- Simultaneous dual-band connectivity in 2.4GHz 300Mbps and 5GHz 867Mbps
- Gigabit Ethernet ports, 802.3at PoE/PD supported
- 802.1Q VLAN mapping multiple SSIDs
- AP router, universal repeater, WISP mode
- Centrally managed by PLANET WAPC series and Software AP Controller



Multiple Network Technologies for Incredibly 1750Mbps High-Speed Connection

The WDAP-1750AC supports IEEE 802.11a/b/g/n/ac dual band standard with 3T3R antenna technology; therefore, it can provide the wireless speed up to 450+1300Mbps which is 3 times faster than the traditional 11n Access Point. Moreover, the WDAP-1750AC is equipped with all Gigabit Ethernet ports and hardware designed Wi-Fi ON/OFF switch. Compared with general wireless APs, the WDAP-1750AC offers faster transmission speed and more convenient method to enable or disable wireless signal.

Enterprise Wireless Access Points

WDAP-C7200AC

1200Mbps 802.11ac Wireless AP

- Simultaneous dual-band connectivity in 2.4GHz 300Mbps and 5GHz 867Mbps
- Gigabit Ethernet port, 802.3at PoE/PD supported
- Supports 10 multiple-SSIDs
- Multiple operation modes: AP, Client, WDS, Universal Repeater
- Centrally managed by PLANET WAPC series and Software AP Controller



WDAP-W7200AC

1200Mbps 802.11ac Wireless AP

- Simultaneous dual-band connectivity in 2.4GHz 300Mbps and 5GHz 867Mbps
- Gigabit Ethernet port, 802.3at PoE/PD supported
- Supports 10 multiple-SSIDs
- Multiple operation modes: AP, Client, WDS, Universal Repeater
- Centrally managed by PLANET WAPC series and Software AP Controller



WNAP-C3220E

2.4GHz 300Mbps 802.11n Wireless AP

- 10/100BASE-TX port, 802.3af PoE/PD supported
- 802.1Q VLAN mapping multiple-SSIDs
- AP Router, Universal Repeater, WISP modes
- Centrally managed by PLANET WAPC series and Software AP Controller



WNAP-C3220A

300Mbps 802.11n Wireless AP

- 10/100BASE-TX port, 802.3at PoE/PD supported
- Supports 5 multiple-SSIDs
- Management Utility and SNMP supported
- Sleek, stylish and ceiling-mountable design
- Centrally managed by PLANET WAPC series and Software AP Controller



WNAP-W2200UE

2.4GHz 300Mbps 802.11n Wireless AP

- 10/100BASE-TX ports, with one 802.3af PoE/PD port supported
- 802.1Q VLAN mapping multiple SSIDs
- AP router, universal repeater, WISP mode
- In-wall design with USB charger port
- Centrally managed by PLANET WAPC series and Software AP Controller



WNAP-W2201A

300Mbps 802.11n Wireless AP

- 10/100BASE-TX ports, with one 802.3af PoE/PD port supported
- Supports 5 multiple-SSIDs
- Management Utility and SNMP supported
- In-wall design with RJ11 ports for phone line connection
- Centrally managed by PLANET WAPC series and Software AP Controller



Wireless Presentation Gateways

WIPG-300H

- Full HD1080p HDMI/VGA output
- 4-to-1 split screen projection
- 300Mbps 802.11n MIMO technology
- 802.11n Wi-Fi AP and AP-Client mode
- Up to 30fps network screen projection
- SidePad manages projection via iOS/Android device
- Web Slides allow audience to view the slides from web browser
- USB over IP for touch screen and IWB
- Multiple users access in standby and conference modes

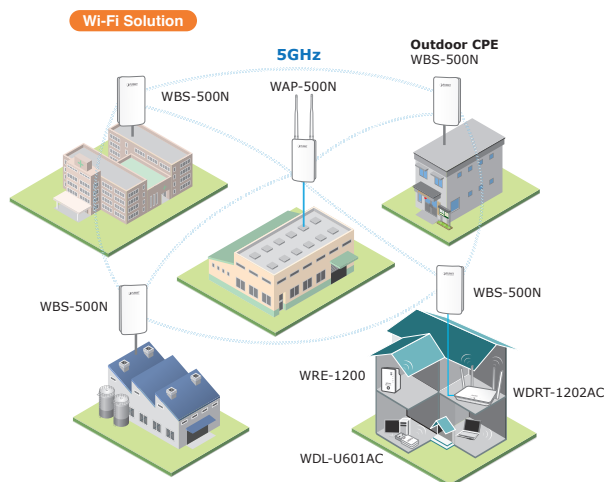
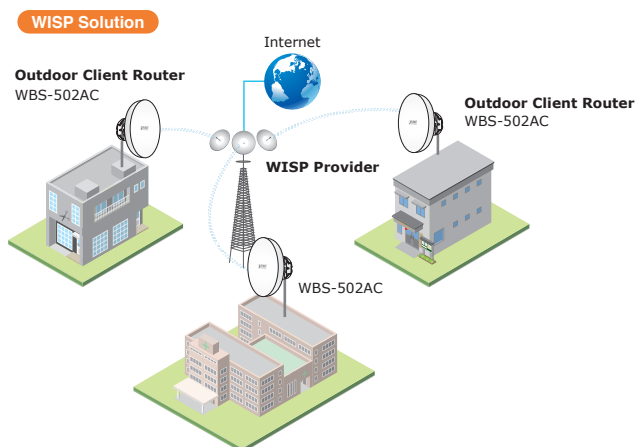




Outdoor Wireless LAN Solutions

WISP Solution

Compared with the traditional ISP provider that offers wired Internet service, PLANET WISP solution provides more elastic, more effective and low-cost wireless Internet service, and no limitation of place, be it a small residence or campus.

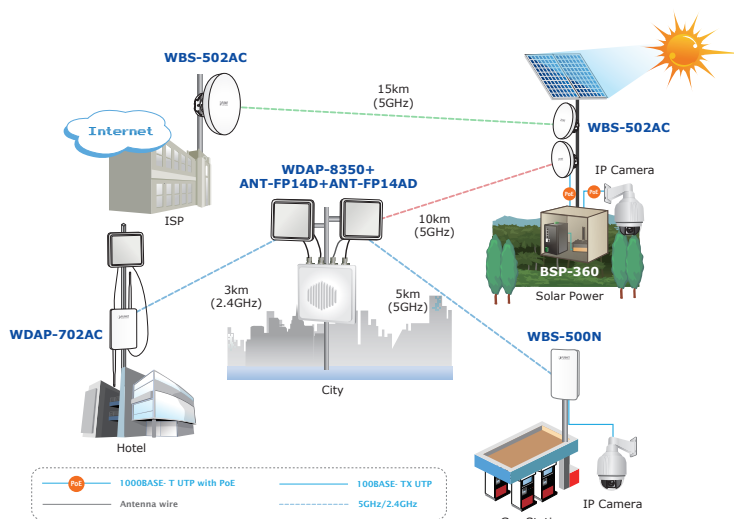


Outdoor Wi-Fi LAN Solution

It provides small and medium businesses or SOHO with wireless LAN data transmission solution. It features a wireless point to point/multiple point to multiple point bridge, general data transmission and media transmission like surveillance monitoring between buildings. It is suitable for wide-ranging connectivities.

Outdoor CPE/Client

PLANET Outdoor Wireless Solution supports multiple wireless communication connectivities (AP, Client CPE, WDS PtP, WDS PtMP, Repeater, Universal Repeater and WISP) suitable for various application requirements and thus it helps users to easily build a wireless network and extend the wireless range of the existing wireless network.



5GHz and 2.4GHz 802.11n/ac Wireless Outdoor Solutions

PLANET Outdoor Wireless Solution provides higher transmission power, longer distance, and better performance than standard outdoor wireless access points. It is equipped with various antennas and multiple adjustable transmission output power controllers which are quite suitable for longer distance and widely open space applications.

Dual-band 802.11a/b/g/n/ac Wireless Outdoor CPEs

WDAP-802AC

Dual-band 1200Mbps 802.11ac Outdoor AP

- Simultaneous 2.4GHz (Wi-Fi access) and 5GHz (backhaul) wireless network
- Gigabit wire and 1200Mbps wireless connectivity (dual-band)
- 4 built-in N-type (F) antenna connectors
- 802.1Q VLAN mapping multiple SSIDs
- Ground terminal design, IP68 rating
- 802.3at Power over Ethernet
- Centrally managed by PLANET WAPC series and Software AP Controller



WDAP-702AC

Dual-band 1200Mbps 802.11ac Outdoor AP

- Simultaneous 2.4GHz (Wi-Fi access) and 5GHz (backhaul) wireless network
- Gigabit wire and 1200Mbps wireless connectivity (dual-band)
- 4 built-in RP-SMA (F) antenna connectors
- 802.1Q VLAN mapping multiple-SSIDs
- IPv4 and IPv6 dual-stack networks
- Guest network, band-steering, fast-roaming
- Ground terminal design, IP55 protection
- 802.3at Power over Ethernet design
- Centrally managed by PLANET Hardware and Software AP Controller



WDAP-8350

Dual-band 600Mbps 802.11n Outdoor CPE

- Simultaneous 2.4GHz (Wi-Fi access) and 5GHz (backhaul) wireless network
- Gigabit wire and 600Mbps wireless connectivity (dual-band)
- 4 built-in N-type (F) antenna connectors
- 802.1Q VLAN mapping multiple-SSIDs
- IPv4 and IPv6 dual-stack networks
- Dual-image backup mechanism
- Ground terminal design, IP66 protection
- 802.3at Power over Ethernet design



5GHz 802.11a/n/ac Wireless Outdoor CPEs

WAP-552N

5GHz 300Mbps 802.11n Outdoor AP

- Built-in 2 N-type (F) antenna connectors
- AP, WDS PtP/PtMP, repeater, WISP mode
- IP67 rating
- 802.3at Power over Ethernet
- 802.1Q VLAN mapping multiple SSIDs
- Centrally managed by PLANET WAPC series and Software AP Controller



WAP-500N

5GHz 300Mbps 802.11n Outdoor AP

- Built-in 2 RP-SMA (F) antenna connectors
- AP/Client, WDS PtP/PtMP, Repeater, WISP modes
- High transmission output power
- UV resistance, IP55 protection
- Passive Power over Ethernet design
- 802.1Q VLAN
- Centrally managed by PLANET WAPC series and Software AP Controller



WBS-502AC

5GHz 900Mbps 802.11ac Outdoor CPE

- Built-in 19dBi dual-polarized antenna
- AP/Client, WDS PtP/PtMP, WISP modes
- High transmission output power
- UV resistance, IP55 protection
- 360-degree 3D array of mounting brackets design
- 802.3at Power over Ethernet design
- 802.1Q VLAN
- Centrally managed by PLANET WAPC series and Software AP Controller



WBS-500N

5GHz 300Mbps 802.11n Outdoor CPE

- Built-in 10dBi dual-polarized antenna
- AP/Client, WDS PtP/PtMP, Repeater, WISP modes
- High transmission output power
- UV resistance, IP55 protection
- Centrally managed by PLANET WAPC series and Software AP Controller



WNAP-7335

5GHz 300Mbps 802.11a/n Outdoor AP

- Built-in 2 RP-SMA (F) antenna connectors
- AP/Client, WDS PtP/PtMP, WISP modes
- High transmission output power
- UV resistance, IP55 protection
- TDMA technology enhances PtMP wireless efficiency
- 100Mbps real performance at 5km



WNAP-7325

5GHz 300Mbps 802.11a/n Outdoor CPE

- Built-in 14dBi dual-polarized antenna
- AP/Client, WDS PtP/PtMP, WISP modes
- High transmission output power
- UV resistance, IP55 protection
- TDMA technology enhances PtMP wireless efficiency
- 100Mbps real performance at 5km





2.4GHz 802.11b/g/n Wireless Outdoor Solutions

WAP-252N

2.4GHz 300Mbps 802.11n Outdoor AP

- Built-in 2 N-type (F) antenna connectors
- AP, WDS PtP/PtMP, repeater, WISP mode
- IP67 rating
- 802.3at Power over Ethernet
- 802.1Q VLAN mapping multiple SSIDs
- Centrally managed by PLANET WAPC series and Software AP Controller



WAP-200N

2.4GHz 300Mbps Outdoor AP

- Built-in 2 RP-SMA (F) antenna connectors
- AP/Client, WDS PtP/PtMP, Repeater, WISP modes
- High transmission output power
- UV resistance, IP55 protection
- Passive Power over Ethernet design
- 802.1Q VLAN
- Centrally managed by PLANET Hardware and Software AP Controller



WBS-200N

2.4GHz 300Mbps Outdoor CPE

- Built-in 8dBi dual-polarized antenna
- AP/Client, WDS PtP/PtMP, Repeater, WISP modes
- High transmission output power
- UV resistance, IP55 protection
- Passive Power over Ethernet design
- 802.1Q VLAN
- Centrally managed by PLANET Hardware and Software AP Controller



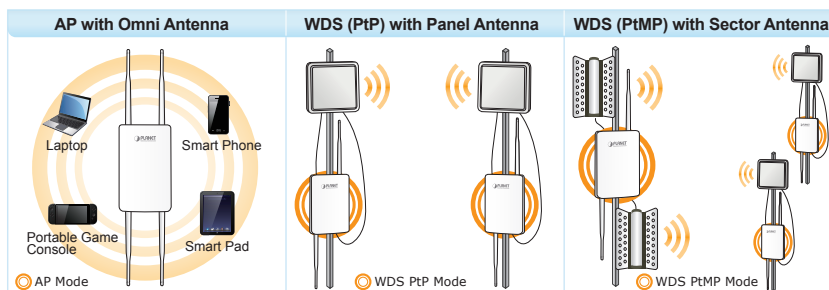
WNAP-6335

2.4GHz 300Mbps Outdoor AP

- Built-in 2 RP-SMA (F) antenna connectors
- AP/Client, WDS PtP/PtMP, WISP modes
- High transmission output power
- UV resistance, IP55 protection
- TDMA technology enhances PtMP wireless efficiency



Flexible Deployment with Various Antennas



Wireless Home and SOHO Applications

3G Wireless AP Routers

PLANET Wireless 3G Broadband Router provides home, SOHO and business users with a reliable and cost-effective wireless solution by featuring 3G WAN Internet access and high-speed IEEE 802.11n wireless transmission. PLANET Wireless 3G Broadband Router offers more powerful and flexible capability for business demands and easier way for users to share an instant wireless network service via 3G service wherever at home, hotspot, or in public places like transportation, outdoor events, etc.

VDR-300NU

300Mbps Dual-band 802.11n VDSL2 Router

- Built-in VDSL2 with G. vectoring technology
- Multiple WAN connections and 3G failover
- Selectable dual-band wireless
- Supports multiple wireless operation modes
- TR069 compliant DLNA media server
- PLANET DDNS supported



802.11n/ac Dual-band Wireless Routers

WDRT-1200AC

1200Mbps 802.11ac Wireless AP Router

- Simultaneous dual-band connectivity in 2.4GHz 300Mbps and 5GHz 867Mbps
- 4 internal antennas for better performance
- Equipped with all Gigabit RJ45 ports
- One USB 3.0 port with file sharing and DLNA supported



WDRT-1202AC

1200Mbps 802.11ac Wireless AP Router

- Simultaneous dual-band connectivity in 2.4GHz 300Mbps and 5GHz 867Mbps
- Built-in 5dBi high-gain antennas
- Equipped with all Gigabit RJ45 ports
- IPv6/IPv4 dual stack capability
- One USB 2.0 port with file sharing and DLNA supported
- Supports guest network
- Supports L2TP over IPSec VPN



2.4GHz 802.11b/g/n Wireless AP Routers

VDR-301N

300Mbps 802.11n Wireless VDSL2 Router

- Built-in VDSL2 with G. vectoring technology
- Multiple WAN connections and ADSL+ fallback
- IPv6/IPv4 dual stack capability
- TR069 compliant DLNA media server
- PLANET DDNS supported
- Supports L2TP VPN



WNRT-300

150Mbps 802.11n Wireless Portable Router

- Hardware switchable operation modes: Router/AP/Client
- Built-in rechargeable li-ion battery
- Easy setup wizard
- Portable and pocket-sized design for true mobility



FRT-415N

300Mbps 802.11n Wireless Fiber Router

- 100/100Mbps upstream and downstream fiber port for long-distance WAN connection
- 2~60km flexible distance deployment via 100BASE-FX SFP fiber interface
- Multiple WAN Connections
- Built-in 5dBi high-gain antennas
- IPv6 supported for new services and higher security
- IGMP proxy and IGMP snooping for IPTV applications



Wireless Range Extenders

- IEEE 802.11b/g/n/ac standard compliant
- High-speed wireless data rate
- Multiple operation modes: AP/Repeater/WDS PtP/WDS PtMP

WRE-1200

1200Mbps 802.11ac Wireless Range Extender

- Simultaneous dual-band connectivity in 2.4GHz 300Mbps and 5GHz 867Mbps
- Gigabit Ethernet port and mode switch button
- One-touch Wi-Fi Protected Setup (WPS)
- Hardware modes: AP/Repeater/Client
- Built-in electrical power socket, wall plug design



WDL-U601AC

433Mbps 802.11ac Dual-band USB Adapter

- 433Mbps 802.11ac MIMO technology
- Selectable dual band provides more flexible connection
- USB 2.0/1.1 attached interface in tiny size and portable design
- Easy to encrypt with the WPS button
- Supports WEP 64/128, WPA, WPA-PSK, WPA2, WPA2-PSK (TKIP/AES encryption)
- Supports QoS-WMM (Wi-Fi Multi-media) function/WMM-PS
- Supports software AP mode
- Supports the most popular operating systems including Windows XP, Vista, Win 7, Win 8, Linux, and MAC OS X ready

433 Mbps



Wireless Home and SOHO Applications

PLANET makes your home networking easier and more compact with 802.11ac solution. Simply install an 802.11ac compatible wireless router, WDRT-1202AC, in the house, and its wide coverage and stable quality will definitely offer you a seamless and impressive wireless roaming experience. From now on, you can surf the web, enjoy multimedia streaming, share files, and make VoIP calls wirelessly without any limitation.



A



WDRT-1202AC

1200Mbps 802.11ac Dual Band Wireless Gigabit Router

B



WRE-1200

1200Mbps 802.11ac Dual Band Range Extender

C



ICA-W7100

720P Wireless IR PT IP Camera

Wireless Antennas and Cable Accessories

To commit the wireless long-distance connectivity, PLANET Wireless LAN Solution also provides a variety of Antennas, Cables and other Accessories for 2.4GHz and 5GHz band applications where more RF gain power is required to increase the convergence of the installations wirelessly.

The antennas include unidirectional antenna and omni-directional antenna to meet the need of different environments. The omni-directional antenna is ideal to install in a central base-station in a point to multi-point wireless application, and unidirectional antennas are designed for long distance.

To keep the wireless device free from lightning induced surges that travel on the coaxial transmission lines, PLANET also provides the arrester guarding the wireless equipment from damage that could cause your previous network resources to break down.

2.4G Antennas

ANT-OM8
8dBi Omni-directional Antenna



ANT-FP9
9dBi Flat Panel Directional Antenna



ANT-SE18
12-18dBi Adjustable Sector Antenna



ANT-OM9 (Indoor)
9dBi Omni-directional Antenna



ANT-FP14D
14dBi Flat Panel Dual Polarization Antenna



ANT-GR21
21dBi Grid Directional Antenna



ANT-OM15
15dBi Omni-directional Antenna



ANT-FP18
18dBi Flat Panel Directional Antenna



5GHz Antennas

ANT-OM10A
10dBi Omni-directional Antenna



ANT-FP18A
18dBi Flat Panel Antenna



ANT-SE17A
17dBi Sector Antenna



ANT-FP14AD
14dBi Flat Panel Dual Polarization Antenna



ANT-FP23A
23dBi Flat Panel Antenna



Accessories

WL-NM-0.6
0.6m N-male (male pin) to N-male (male pin) Cable



WL-NM-0.6

WL-MMC
0.3m R-MMCX(F) to R-SMA(M) Cable

WL-MF-0.6
0.6m N-male (male pin) to N-female (female pin) Extension Cable



WL-LTNA

WL-N-0.6
0.6m N-male (female pin) to N-male (male pin) Cable

WL-SMA-0.6
0.6m Reverse SMA (female) to N-male (male pin) Cable

WL-SMA-6
6m Reverse SMA (female) to N-male (male pin) Cable



WL-SMA-0.6