

## Quick Installation Guide

WDAP-702AC

1200Mbps Dual Band 802.11ac  
Outdoor Wireless AP



### 1. Package Contents

Thank you for choosing PLANET Outdoor Wireless AP. Before installing, please verify the contents inside the package box. The device mentioned herein is the brief name of the "Outdoor Wireless AP/CPE".

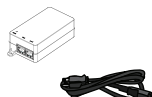
WDAP-702AC



Quick Guide



PoE Injector & Power Cord



Mounting Ring x 1



Screw Set x 1



2.4GHz Antenna x 2  
5GHz Antenna x 2



If there is any item missing or damaged, please contact the seller immediately.

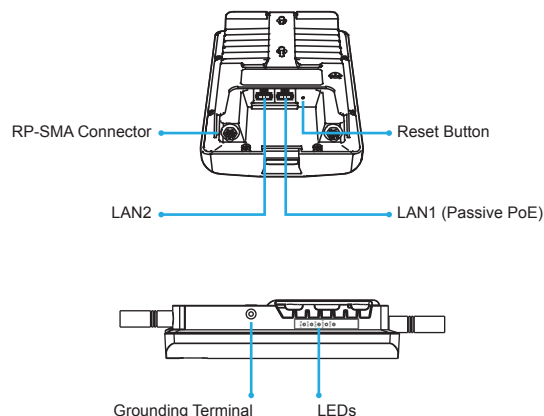
- 1 -

### IMPORTANT SAFETY PRECAUTIONS:

1. **LIVES MAY BE AT RISK!** Please be aware of the electrical wires around. Carefully read the section "**OUTDOOR INSTALLATION WARNING**" in the manual before installation.
2. Users **MUST** complete grounding wired with the device; otherwise, a sudden lightning could cause fatal damage to the device. **EMD (Lightning) DAMAGE IS NOT COVERED UNDER WARRANTY.**
3. Users **MUST** use the "PoE Injector and Power Cord" shipped in the box with the device. Use of other options will cause damage to the device.

### 2. Physical Introduction

#### Hardware Description

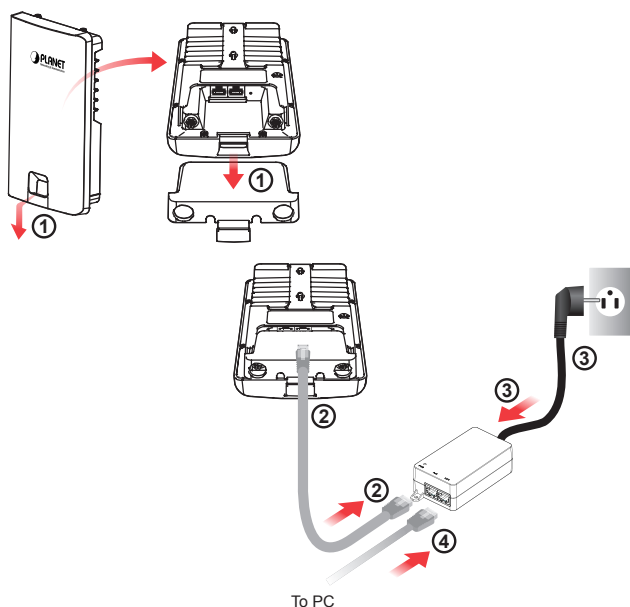


- 2 -

### 3. Hardware Installation

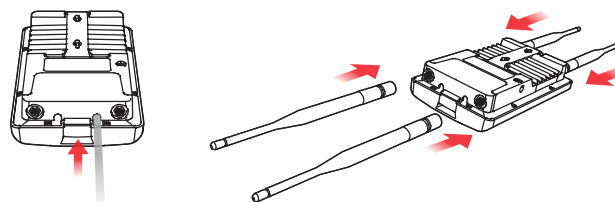
#### Step 1:

- (1) Remove the bottom cover.
- (2) Connect one end of the Ethernet cable into the LAN (Passive PoE) port of the device and the other end to the PoE port on the PoE Injector.
- (3) Connect the power cord with the PoE Injector and plug the other end into an electrical outlet.
- (4) Connect the second Ethernet cable into the LAN port of the PoE Injector and the other end to the Ethernet port on the computer.



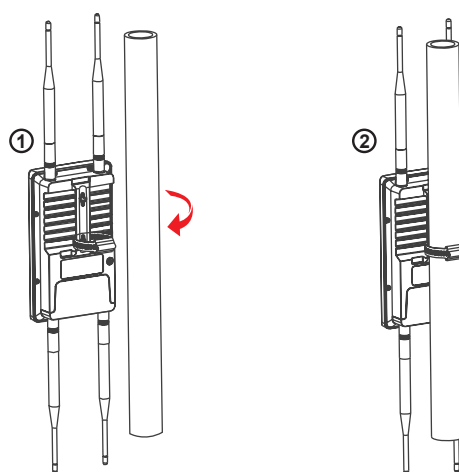
- 3 -

**Step 2:** Place the bottom cover back into the device and attach the antennas onto the antenna connectors of the device to finish the installation.



#### Step 3: Pole Mounting

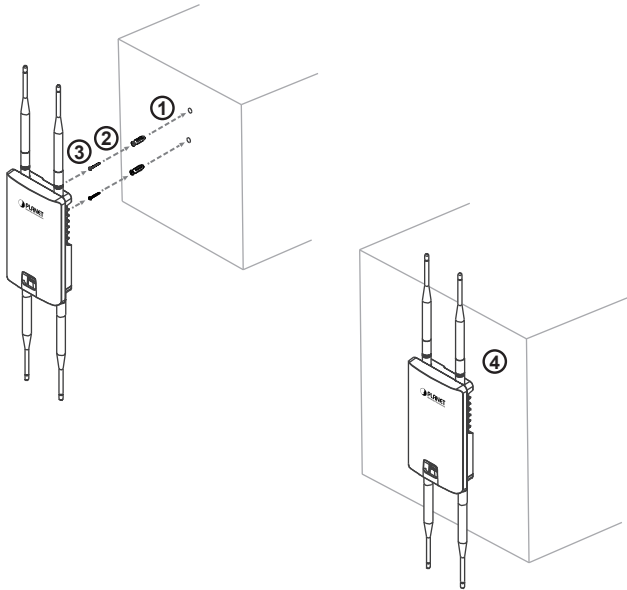
- (1) Thread the open end of the mounting ring through the tab on the pole mounting bracket on the back of the device.
- (2) Lock and tighten the mounting ring to secure the mounting bracket to the pole to finish the installation.



- 4 -

#### Step 4: Wall Mounting

- (1) Mark the locations on the surface for the two mounting holes. Use the appropriate drill bit to drill two holes with a diameter of 8.1mm and depth of 26mm.
- (2) Hammer the anchors into the holes until they are aligned to the wall.
- (3) Screw the screws into the anchors.
- (4) Place the device against the wall with the mounting screw heads to finish the installation.

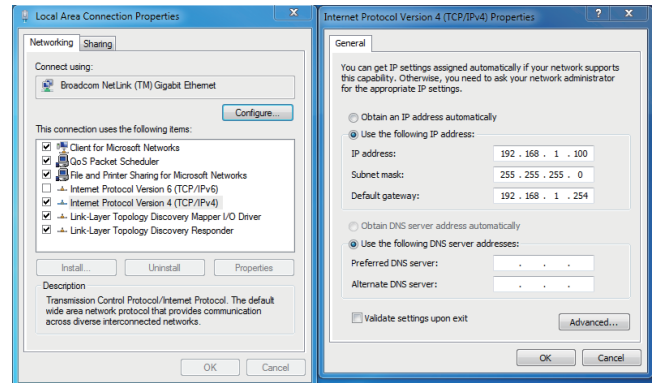


- 5 -

## 4. Web Login

A computer with wired Ethernet connection is required for the first-time configuration of the device.

1. Click the **"Start"** button located in the lower-left corner of your computer.
2. Click **"Control Panel"**.
3. Double-click the **"Network and Sharing Center"** icon.
4. Click **"Change Adapter Settings"**.
5. Double-click **"Local Area Connection"**.
6. Select **"Internet Protocol Version 4 (TCP/IPv4)"** and click **"Properties"**.
7. Select **"Use the following IP address"** and then click the **"OK"** button twice to save the configuration. For example, you may choose from 192.168.1.1 to 192.168.1.254 excluding the default IP address of the device (192.168.1.253).



- 6 -

Default IP Address: **192.168.1.253**

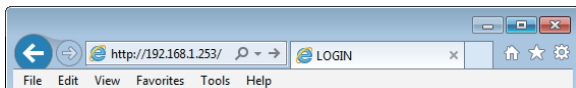
Default User Name: **admin**

Default Password: **admin**

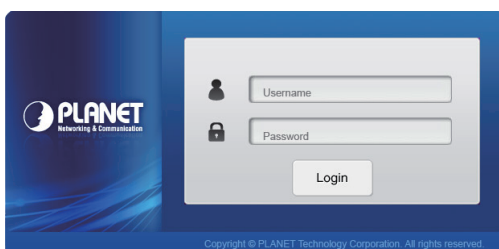
Default 2.4GHz SSID: **PLANET\_1-2.4GHz**

Default 5GHz SSID: **PLANET\_1-5GHz**

**Step 1:** The Web management allows you to access and manage the device easily. Launch the Web browser and enter the default IP address **"http://192.168.1.253"**.



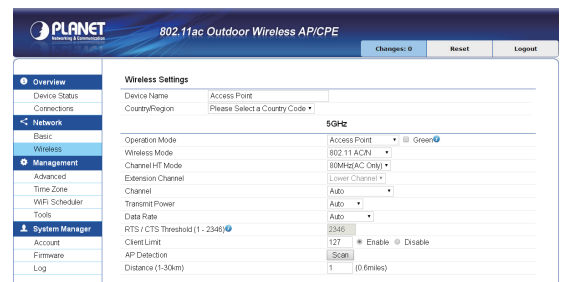
**Step 2:** When the login window appears, please enter the User Name and the Password. The default User Name and Password are both **"admin"**. Then click the **Login** button to continue.



For security reasons, it is recommended to change the password at the first login and memorize it.

- 7 -

**Step 3:** After you enter into the Web User Interface, click **Wireless** on the left hand side of the screen to configure the wireless connection. Once the basic configuration of the device is done, go to the **Changes** page to save and apply the changes.



## Further Information:

The above steps introduce the simple installations and configurations of the device. For further configurations, please refer to the user manual, which can be downloaded from the website.



**WDAP-702AC:**

<http://www.planet.com.tw/en/support/download.php?ty=4&model=48986&type=3>

If you have further questions, please contact the local dealer or distributor where you purchased this product.



2011-E10690-000

- 8 -