

Hardware Control System

The ATEN Hardware Control System perfectly fits any new and existing hardware installation. It integrates multiple devices to centralize, simplify and automate control. The customizable user interface, being it a digital GUI or physical controls, can be entirely themed, personalized and branded.



STANDARD CONNECTIONS

Ethernet, serial, I/O, relay and infrared ports ensure that any commonly used hardware device can be connected and controlled.



SIMPLIFIED CONTROL

Control multiple devices with a single button to ready an entire room. Custom design a GUI or control panel to manage individual units and advanced settings.



FIRMWARE COMPATIBILITY

The drivers library of the VK6000 software is equipped with 10,000+ device drivers and is easily expandable.



EASILY EXPANDABLE

Multiple expansion boxes allow users to control even more serial, relay or infrared devices when required. With the advantage of an Ethernet-based connection, the expansion boxes can be connected to the VK2100 from a variety of locations, benefitting from POE.



PERSONAL USER INTERFACE

Physical buttons, sensors or a completely personalized application? Design your user interface for cross-platform use, using a drag-and-drop application system.

ROOM

2

ROOM

4

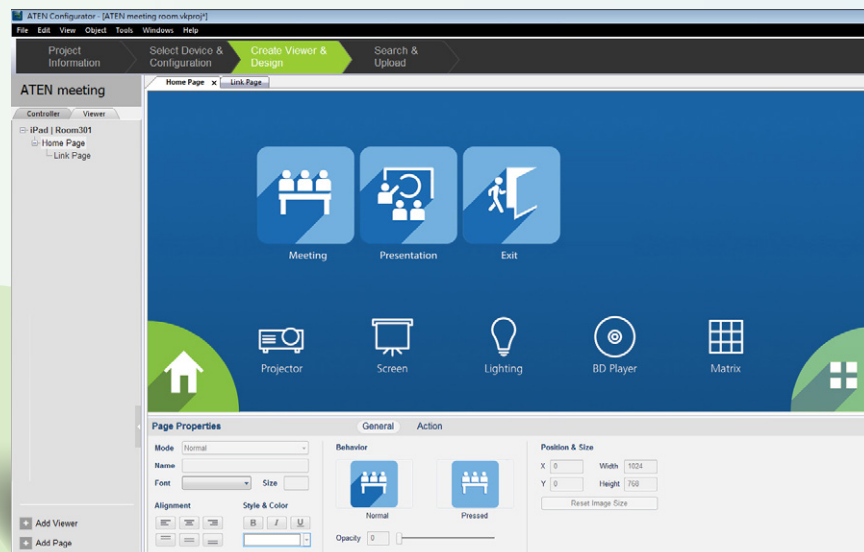
VK2100 Hardware controller



The VK2100 functions as the main controller. Any type of hardware, commonly installed in a room, can be connected. Being rackmountable, it can be nicely hidden from sight.

- Various interfaces:
 - 6 Serial ports
 - 4 IR / Serial ports
 - 4 Relay channels
 - 4 I/O Channels
 - 1 Ethernet port
 - 4 DC 12V outputs (24W)
- 1 USB port for profile uploading
- Add expansion boxes:
 - VK224 - 4 serial ports
 - VK236 - 6 IR/serial ports
 - VK248 - 8 relay channels

VK6000 Configurator



The VK6000 Configurator software functions as a guide to setup the desired control profiles. Moreover, it provides a drag-and-drop interface to design a completely personalized hardware control application fit for PC or mobile device.

- Create a project and setup one or more rooms.
- Select and install devices in an extensive drivers library.
- Assign hardware to physical buttons, sensors or a customized application. Anyone can design a personalized App using the drag-and-drop interface. Coding macros and serial commands remains optional.
- Simulate and test before uploading the control profiles to one or more hardware controllers.
- Install the personalized application on one or more computers and mobile devices.

APP
Customizable
hardware control

The application allows mobility and centralizes control of different hardware devices in different rooms. It can manage an entire surveillance setup, such as switching workstations, changing videowall profiles, setting sound, lights and zooming cameras.



ATEN Control System App



Android



iOS



Windows

LED indication for hardware status and activity reporting

Front
side



USB port to upload profiles easily

IR Learning function for adding IR device drivers

Back
side



Lighting Control



Screen



Lift



TV



Blu-ray / DVD



Amplifier



Smoke Sensor



Curtains



Door Sensor



Video Matrix



Projector



Conferencing System

1 CONNECT

Connect all hardware to the VK2100 Controller.

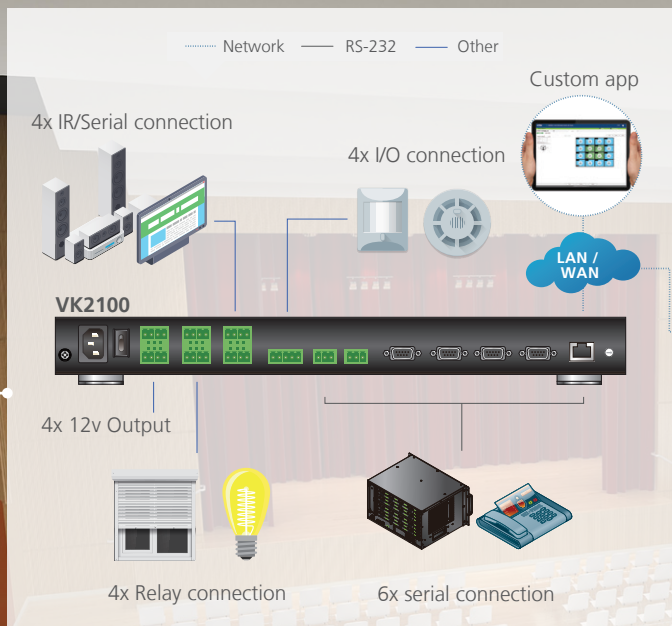
2 CONFIGURE

Configure system settings with the VK6000 software.

3 CONTROL

Control the entire setup via computer, mobile device, physical buttons or sensors via the Control System App.





The ATEN Control System can easily be deployed into an existing installation - in a variety of commercial and educational environments, as it seamlessly integrates with a wide range of hardware devices, including A/V equipment, video matrix switches, cameras, power supplies, conference systems, projector lifts and many more. The ATEN Control System is perfect for meeting rooms, conference centers, boardrooms, classrooms or any room that requires complete control of all hardware equipment.

One touch to manage multiple devices in one or more rooms



ROOM



ATEN Infotech nv
Mijnwerkerslaan 34, 3550 Heusden-Zolder, Belgium
TEL: +32 115 315 43, sales@aten.be, www.aten.be