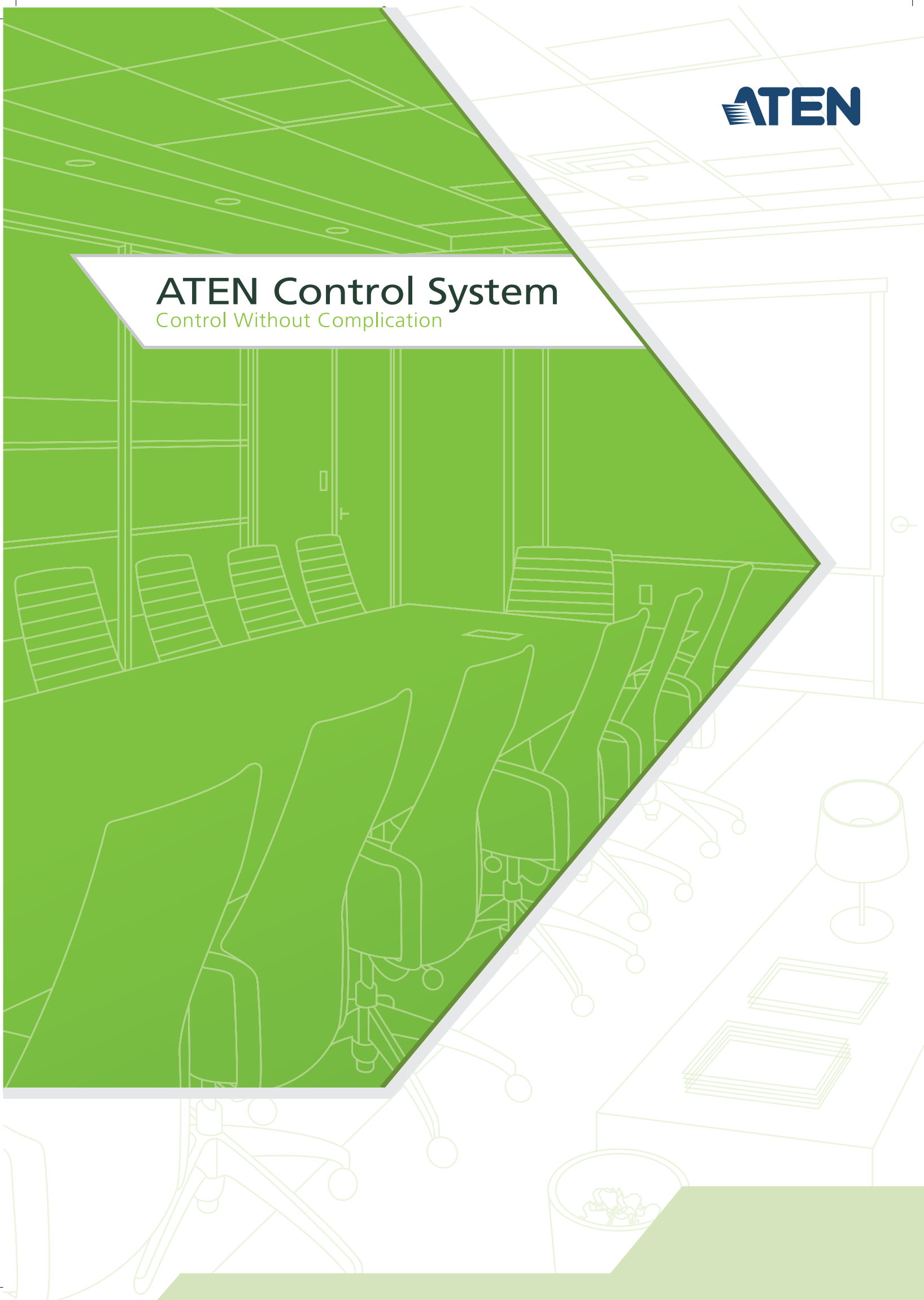




ATEN Control System

Control Without Complication





WHAT is ATEN Control System?

When it comes to creating the perfect environment for the perfect meeting, training program or video conference, you don't want to settle for anything but the comfort of control – without complication. You might have a modern environment with all sorts of high-tech equipment, but what makes it worthwhile is how you bring together the presentation with audio, video and lighting in a seamless collaboration. This is where a control system comes into the picture to provide integrated control and system automation.

The ATEN Control System, incorporating the VK2100 (ATEN Controller), the VK6000 (ATEN Configurator) and the ATEN Control System App is a standard Ethernet-based management system that connects all hardware devices in a room or large facility to provide centralized control of devices directly and effortlessly from a tablet computer or mobile device.

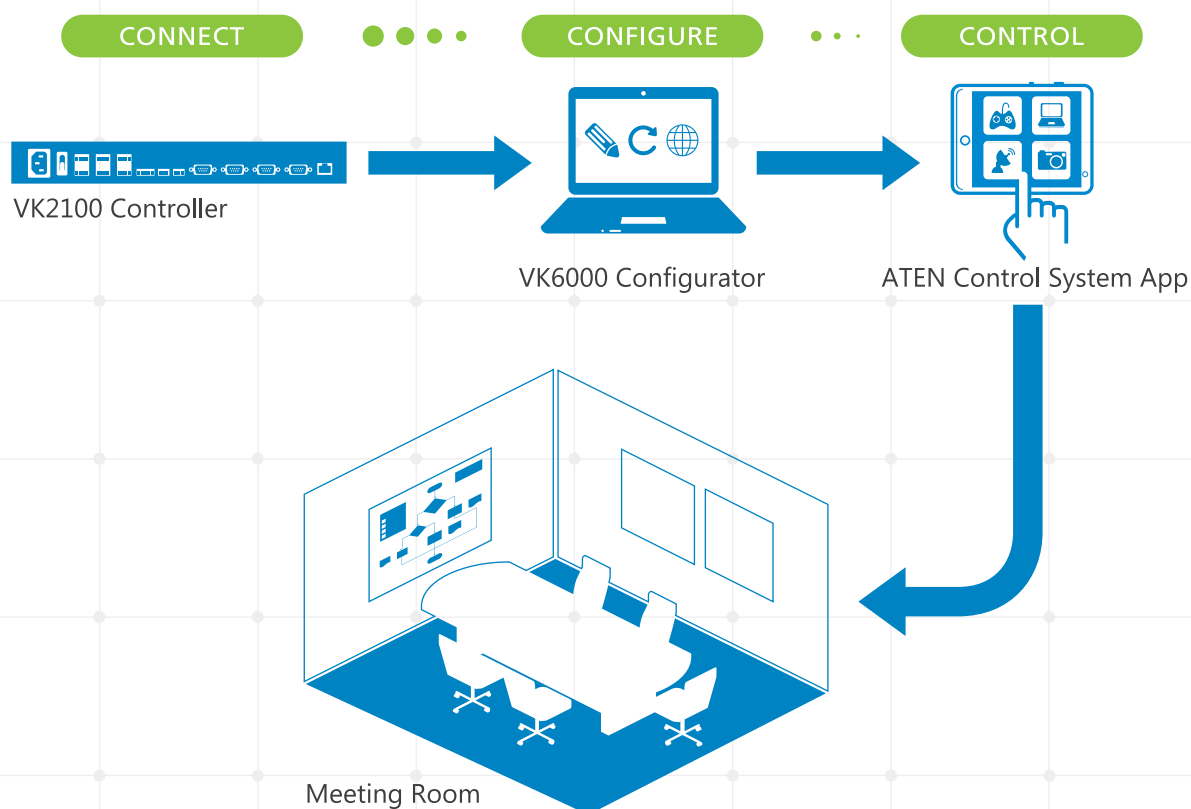
- The VK2100 works as the main controller to provide connectivity to all types of hardware devices commonly seen in a room.
- The VK6000 Configurator software features quick setup with the configuration of hardware and device controls in 4 easy steps.
- The ATEN Control System App empowers you with the mobility to control different hardware devices in different rooms whenever and however you like.

No more pre-meeting or post-meeting setup and break down, and no more redundant remote controls, everything is easily accessible from a tablet computer or mobile device as you tap and go. The ATEN Control System is a perfect fit in the hardware consolidation plan for any working environment, educational facility, conference hall or any other room that needs complete control.

HOW to Deploy the ATEN Control System?

The ATEN Control System is perfectly applicable in any room that requires integration of different hardware devices with a customizable interface and controls. No matter how large the room or how complicated the hardware, deploying the ATEN Control System can be completed in 3 easy steps:

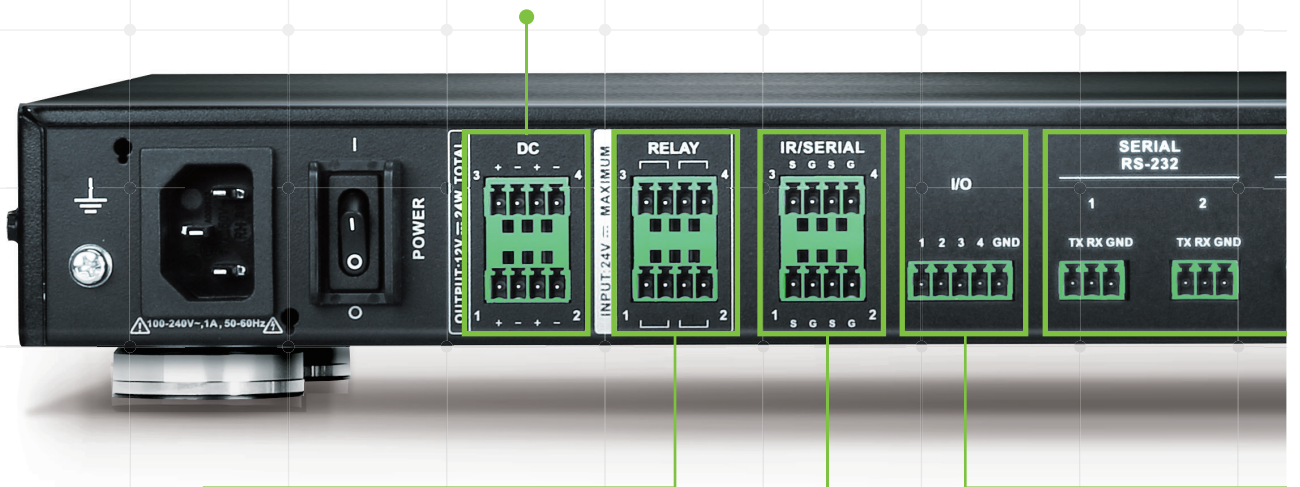
- **CONNECT** all hardware to the VK2100.
- **CONFIGURE** system settings with the VK6000 software.
- **CONTROL** the hardware from a tablet computer via the ATEN Control System App.



LED indication for hardware s



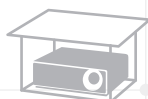
4 DC outputs provide a power supply of 24 W max



Lighting Control



Screen



Lift



TV



Blu-ray / DVD



Amplifier

CONNECT

The VK2100 is a **hardware controller** that can integrate seamlessly with any hardware device installed in a room and with ATEN VanCryst™ pro-A/V products. It serves as a centralized platform where hardware devices are converged to be monitored, managed and controlled directly via a tailor-made GUI available on a tablet computer or mobile device.

status and active messages



USB port for easy profile upload

IR Learning function for adding IR device drivers

Controller ID Switch



Door Sensor

Curtains

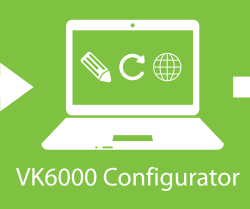
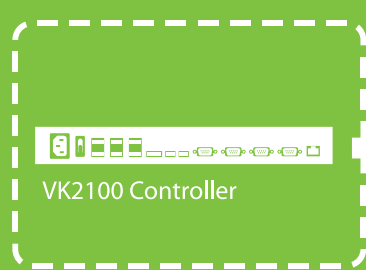
Power Distribution Unit

Video Matrix

Projector

Conferencing System

Camera



ATEN Control System App



Meeting Room



1

Create Project

- Simple room setup in 4 easy steps via VK6000 software

2

Select Device

- Built-in Database & Generator for device driver setup and overall device management
- Built-in ATEN Library comprising 10,000+ device drivers and all ATEN device drivers

File Edit View Object Tools Windows Help

Project Information Select Device & Configuration Create Viewer & Design Search & Upload

Project Information

Project Name

Controller ID

ATEN Controller Type

Number of Rooms

File Edit View Object Tools Windows Help

Project Information Select Device & Configuration Create Viewer & Design Search & Upload

ATEN meeting

Controller VK2100-ID01

Viewer Room301

- Projector
- Amplifier
- DVD Player
- Matrix
- Lighting
- ScreenUp
- ScreenDown

Device Configuration

Type	Device	Mode	Room
Serial 1	Matrix	RS232	Room301
Serial 2	Projector	RS232	Room301
Serial 3	Lighting	RS232	Room301
Serial 4	Matrix	RS232	Room301
Serial 5	None	RS232	Room301
Serial 6	None	RS232	Room301
I/O 1	None	Output	Room301
I/O 2	None	Output	Room301
I/O 3	None	Output	Room301
I/O 4	None	Output	Room301
IR 1	Amplifier	IR	Room301
IR 2	DVD Player	IR	Room301
IR 3	None	IR	Room301
IR 4	None	IR	Room301
Relay 1	ScreenUp		Room301
Relay 2	ScreenDown		Room301
Relay 3	None		Room301
Relay 4	None		Room301

+ Add More D + Add More D + Add More D + Add More D

Properties

Control Box

Name

Device Type

Brand

Model

Ver.

+ Add Controller

CONFIGURE

The **VK6000 Configurator software** is used to streamline and simplify the complicated hardware setup in 4 easy steps: Create Project > Select Device > Configure Viewer > Upload Profile. Operation for any room and control of all devices can be customized in a viewer that includes a personally designed GUI that fits perfectly in the tablet or mobile device's screen, signifying "what you see is what you get" as you design the interface, actions and commands that correspond to the control buttons and custom icons added to your GUI.

3

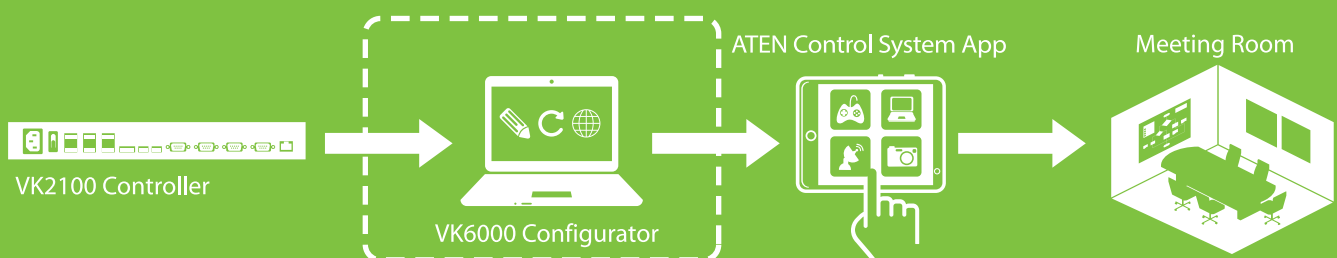
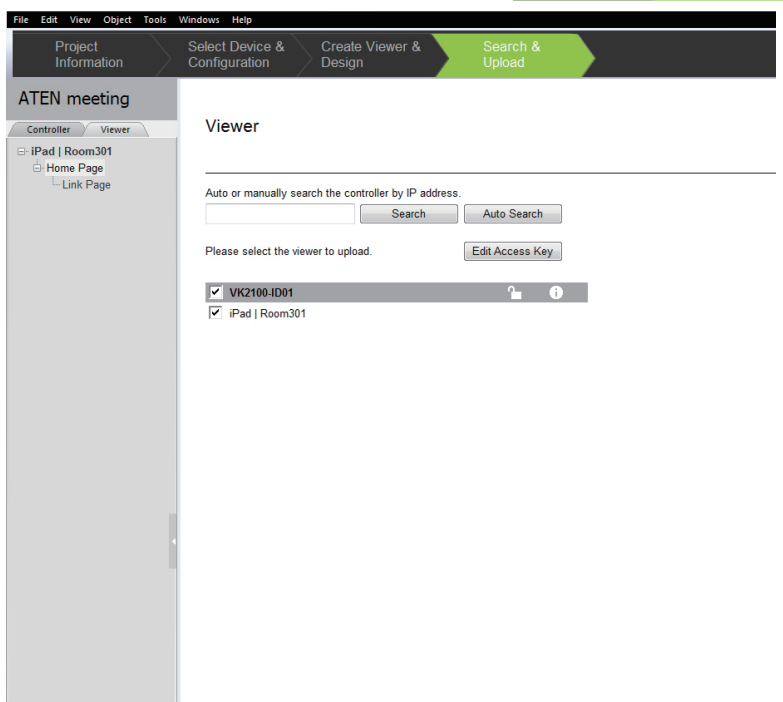
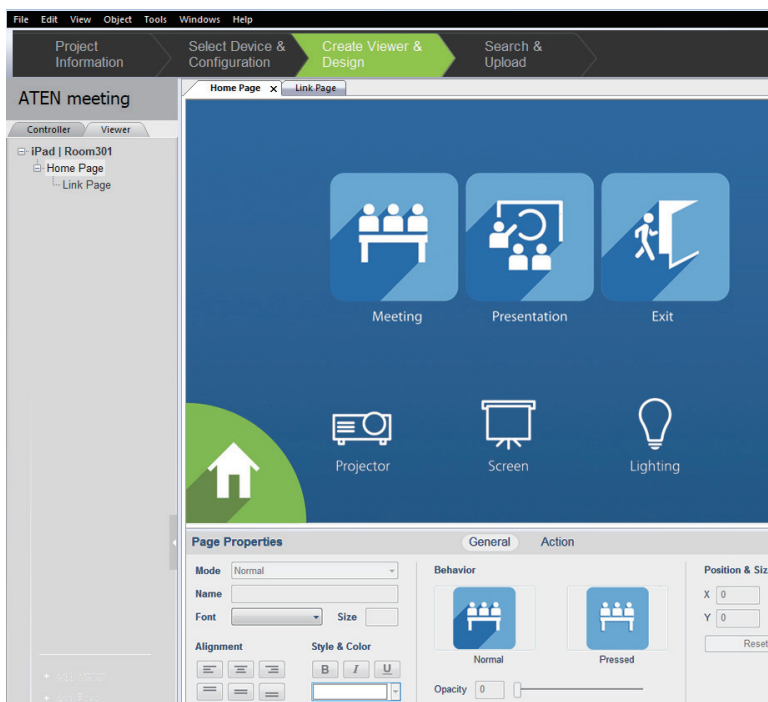
Configure Viewer

- Customizable GUI design and device controls for use on a tablet computer or mobile device
- Test tool to verify commands in action before uploading the Viewer to the VK2100
- Simulator to simulate and review the customized GUI before uploading the Viewer

4

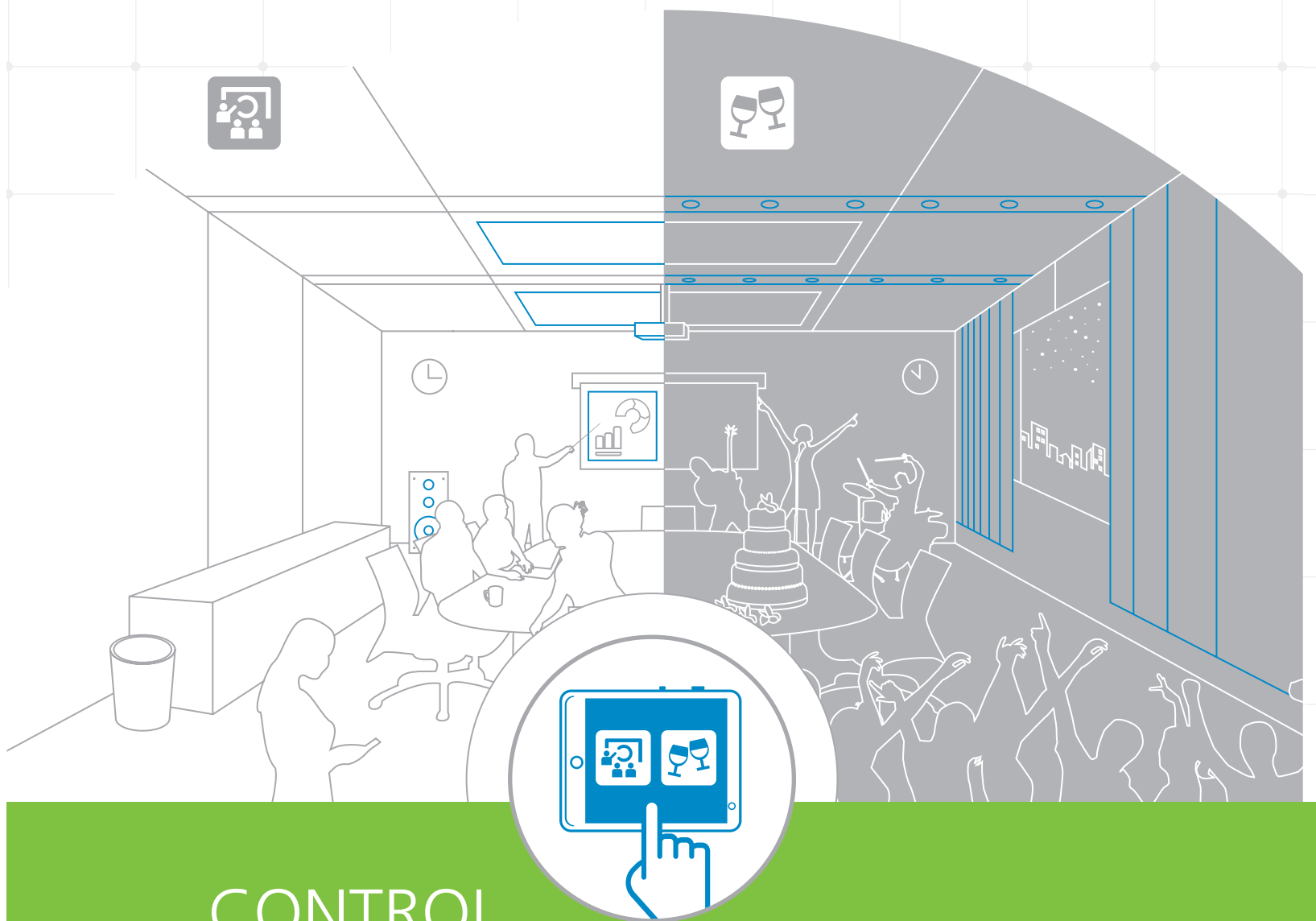
Upload Profile

- Automatically search for controllers and upload/update Viewer profiles



Single-Room Control / Multiple Functions

With the ATEN Control System, a room can quickly change functions to suit the needs of the user. By toggling between different profiles on a tablet computer or mobile device, the room can be instantly transformed to serve different purposes. For example, a meeting room can turn into a party room with the press of a button. The switch is simple, just a quick tap on the tablet or mobile device brings to life the hardware suitable for the occasion.

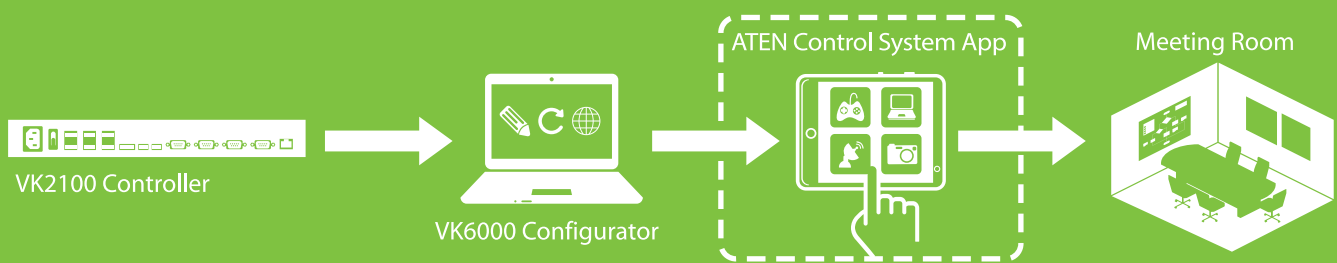
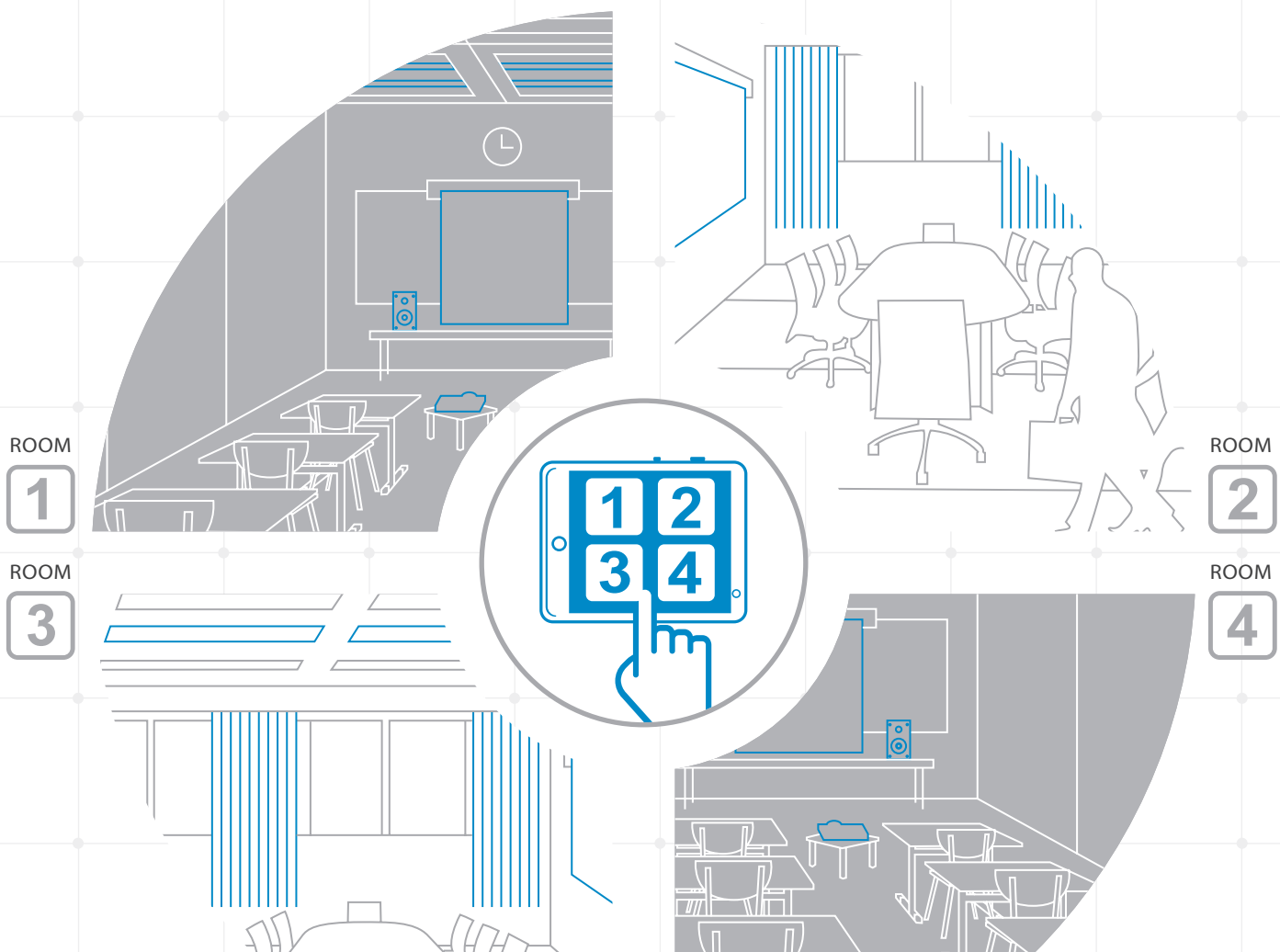


CONTROL

Through an Ethernet connection, the **ATEN Control System App** imports and updates viewer profiles from the controller to a tablet computer or mobile device, allowing you to control the hardware devices in different rooms via simple point-n-tap operations from a customized GUI. Multiple tablet computers and mobile devices can be authorized with control over the same room simultaneously, depending on your software license. Meanwhile, user access to any viewer profile can be restricted with password authentication to reinforce system security.

Multi-Room Control / Central Administration

Taking control of a room is simple but the administration of multiple rooms can be challenging. By installing the ATEN Control System, administrators can control how devices are used in each room. By importing profiles for each room onto a tablet computer or mobile device, administrators can quickly view how each room is being operated at any time and monitor the status of particular hardware for maintenance and technical assistance. This efficient approach simplifies management and makes it much more effective regardless of the installation's scope.





ATEN Control System App



Android



iOS



Windows



ATEN Control System App

Features :

- Multiple rooms can be controlled via a single tablet computer or mobile device
- Authority management: Restricted user access via password authentication
- Supports multiple tablet computers and/or mobile devices
- Custom interface resolutions match device screen size

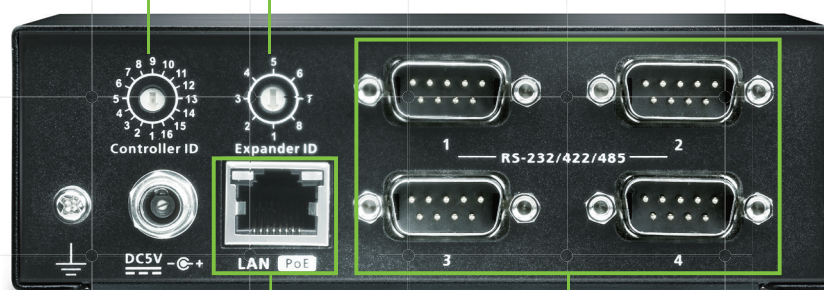
LED indication for hardware status and active messages



USB port for easy firmware upgrade

VK2100 Controller ID Switch

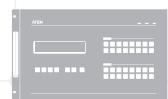
VK224 Expansion Box ID Switch



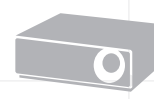
VK2100 Controller



Power Distribution Unit



Video Matrix



Projector



Conferencing System



Camera

Expand

The **VK224 4-Port Serial Expansion** Box provides four additional bi-directional RS-232 / 422 / 485 serial ports for a flexible expansion of the ATEN Control System. This allows users to control additional serial devices in an environment where more serial devices are required. With the advantage of an Ethernet-based connection, the expansion box can be easily connected to VK2100 controller and added to the Control System installation via a LAN connection in a variety of locations across a network.

Solutions Setup

The ATEN Control System can easily be deployed into an existing installation - in a variety of commercial and educational environments, as it seamlessly integrates with a wide range of hardware devices, including A/V equipment, video matrix switches, cameras, power supplies, conference systems, projector lifts and many more. The ATEN Control System is perfect for meeting rooms, conference centers, boardrooms, classrooms or any room that requires complete control of all hardware equipment.

Simple Solution

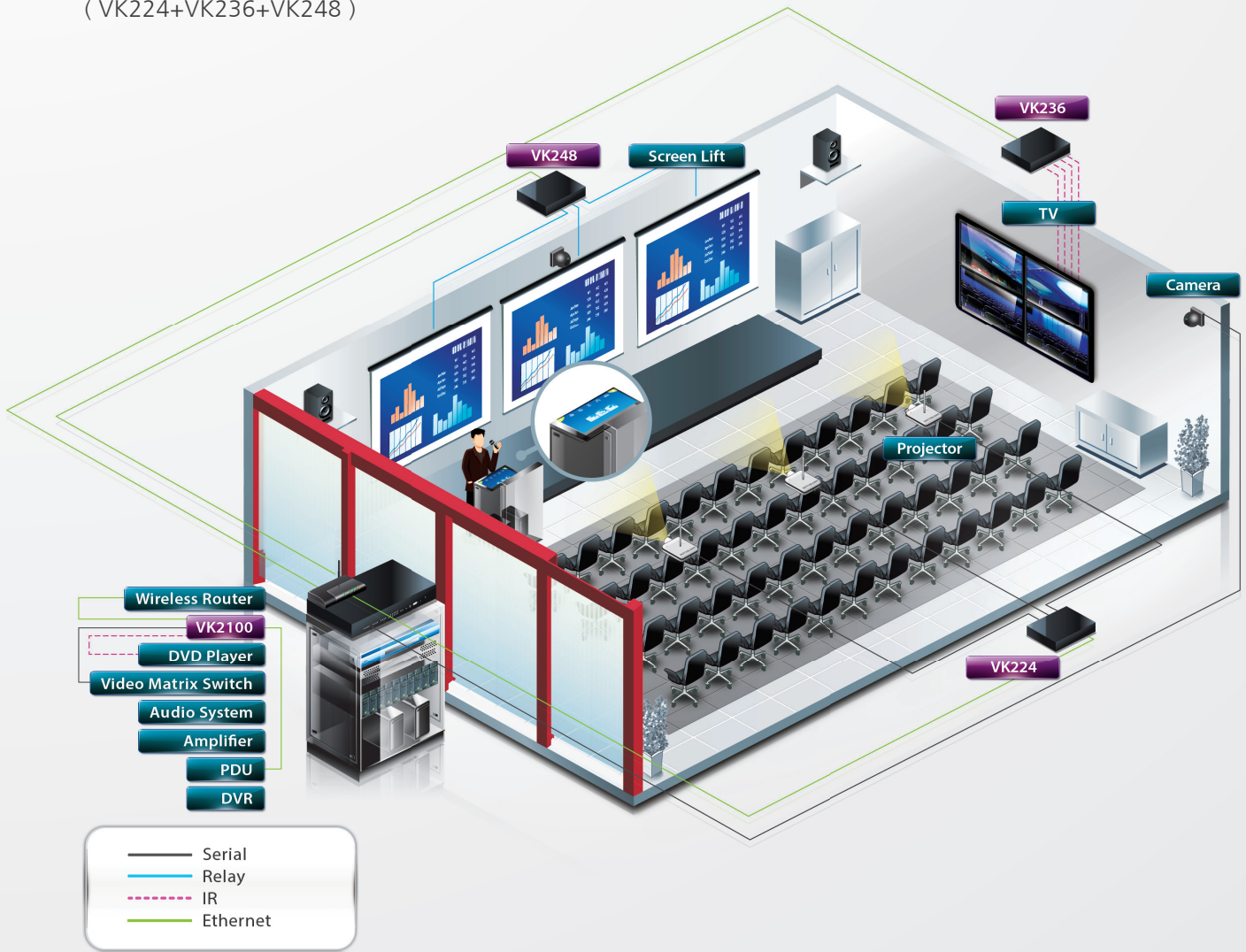
with VK2100 Controller





Expandable Solution

with VK2100 Controller and Expansion Boxes
(VK224+VK236+VK248)



VK2100 Specifications

Interface	
Serial	<ul style="list-style-type: none"> • 4 x Programmable Bi-directional RS-232/422/485 Port (4 x DB9 Male Connector, configurable via pin assignments); • Baud Rate: 300 to 115200 (default: 9600); • Data Bit: 8 (default) or 7; • Parity: None (default), Even or Odd; • Stop Bit: 1 (default) or 2; • Flow Control: None (default), RTS / CTS • 2 x Bi-directional RS-232 Port (2 x 3-Pole Terminal Block Connector); • Baud Rate: 300 to 115200 (default: 9600); • Stop Bit: 1 (default) or 2; • Data Bit: 8 (default) or 7; • Parity: None (default), even or odd
I/O	<ul style="list-style-type: none"> • 4 x Programmable Digital Input / Output Channel (1 x 5-Pole Terminal Block Connector); • Digital Output: 250 mA sink from 12 VDC • Digital Input: <u>VDC Mode</u> <ul style="list-style-type: none"> - Input Voltage Range: 0 to 24 VDC; - Programmable Range: 1 to 24 VDC; • <u>Dry Contact Mode</u> <ul style="list-style-type: none"> - Pull-up 2k ohms to + 12 VDC
Relay	<ul style="list-style-type: none"> • 4 x Relay Channel (2 x 4-Pole Terminal Block Connector) • Normally open, isolated Relays • Contact Rating: Max 24 VDC, 2A
VDC	<ul style="list-style-type: none"> • 4 x 12 VDC Output Port (2 x 4-Pole Terminal Block Connector) • Power Supply: 12 VDC, 2A Max (shared by 4 ports)
Ethernet	<ul style="list-style-type: none"> • 1 x RJ-45 Female, 10/100Base-T • Supported Protocol: ICMP, TCP/IP, DHCP, HTTPS, SSH • DHCP-enabled. The following default IP settings will be used if no IP is assigned within 30 seconds: IP :192.168.0.60 Subnet Mask: 255.255.255.0 • Establishes VK2100 connection with the VK6000 (ATEN Configurator) and iPad (ATEN Control System App)
Switch	
Controller ID	1 x 16-segment Switch
Power	1 x On/Off Switch
IR Learning	1 x IR Receiver LED
Reset Button	1 x Semi-recessed Pushbutton
USB	1 x USB Type A
Power	
Consumption	40 Watt
IP Rating	Internal Power: 100 – 240 VAC, 50-60 Hz
Environmental	
Operational Temp.	0 – 50°C
Storage Temp.	-20 – 60°C
Humidity	0 – 80% RH, Non-Condensing
Physical Properties	
Housing	Metal
Weight	2.64 kg
Dimension (L x W x H)	43.72 x 16.32 x 4.40 cm

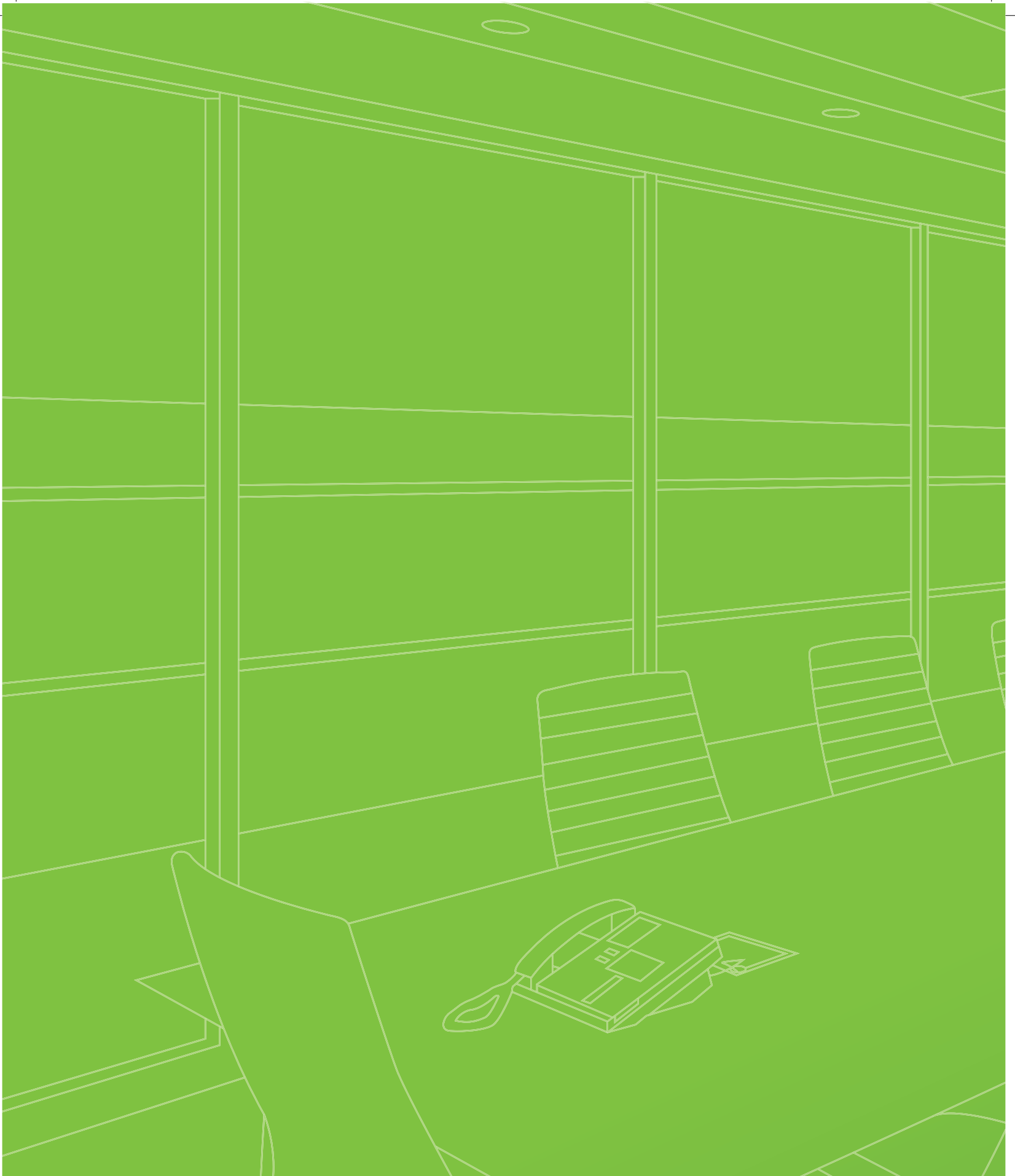
VK224 Specifications

Interface	
Serial	4 x Programmable Bi-directional RS-232/422/485 Port (4 x DB9 Male Connector, configurable via pin assignments); <ul style="list-style-type: none">• Baud Rate: 300 to 115200 (default: 9600);• Data Bit: 8 (default) or 7;• Stop Bit: 1 (default) or 2;• Parity: None (default) or even, odd• Flow Control: None (default) or RTS/CTS
Ethernet	1 x RJ-45 Female, 10/100Base-T Supported Protocol: ICMP, TCP/IP, DHCP, HTTPS, SSH <ul style="list-style-type: none">• DHCP-enabled. The following default IP settings will be used if no IP is assigned within 30 seconds: IP :192.168.0.60 Subnet Mask: 255.255.255.0
Switch	
Controller ID	1 x 16-segment Switch
Expander ID	1 x 8-segment switch
Reset Button	1 x Semi-recessed Pushbutton
USB	1 x USB Type A
Power	
Connectors	1 x DC Jack
Consumption	5 VDC, 1.2A
Environment	
Operational Temp.	0 – 50°C
Storage Temp.	-20 – 60°C
Humidity	0 – 80% RH, Non-Condensing
Physical Properties	
Housing	Metal
Weight	0.46 kg
Dimension (L x W x H)	13.00 x 7.61 x 4.40 cm

More Options for You

Model Number	Model Name
VK236*	6-Port IR/Serial Expansion Box
VK248*	8-Channel Relay Expansion Box

* The expansion boxes will be released soon, please contact your local sales representative for further information.



ATEN International Co., Ltd.

3F., No.125, Sec. 2, Datong Rd., Sijhih District., New Taipei City 221, Taiwan
Phone: +886-2-8692-6789 Fax: +886-2-8692-6767
<http://www.aten.com> E-mail: marketing@aten.com



© Copyright 2016 ATEN® International Co., Ltd.

ATEN and the ATEN logo are trademarks of ATEN International Co., Ltd. All rights reserved. All other trademarks are the property of their respective owners.
Printed 03/2016 V1.0
PAPE-0089-A00

