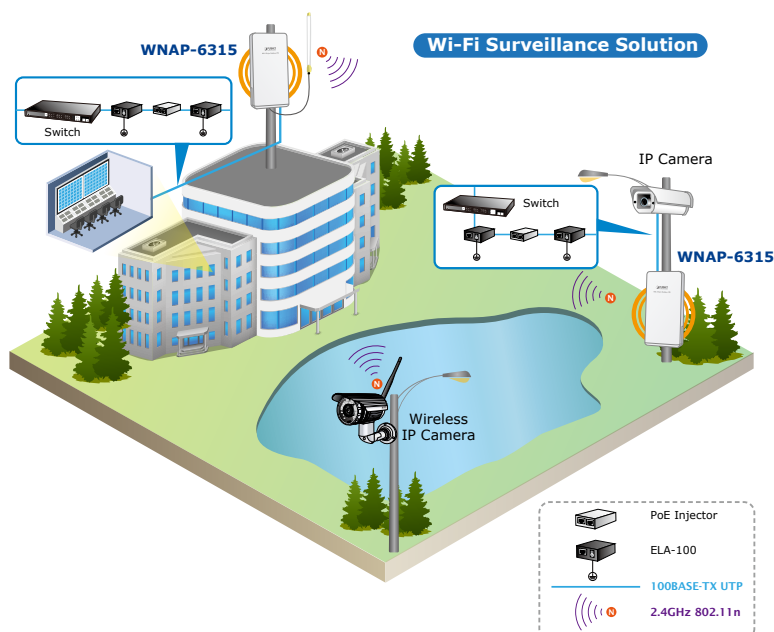


2.4GHz 150Mbps 802.11n Outdoor Wireless AP/Router (Built-in 12dBi Antenna + RP-SMA Connector)



Cost-effective and Flexible Wireless Solution

PLANET WNAP-6315 is compatible with IEEE 802.11b/g/n standard and supports a data rate of up to 150Mbps in 802.11n mode. The WNAP-6315 not only has a built-in 12dBi panel antenna but also reserves one RP-SMA type antenna connector to allow versatile antenna installations including omnidirectional, yagi, sector, flat-panel and grid antennas. Furthermore, the WNAP-6315 can directly communicate with the wireless IP cameras by using the popular 2.4GHz frequency band, thus turning the surveillance services into a wireless environment.



Industrial Compliant Wireless LAN and LAN

- Compliant with IEEE 802.11n wireless technology capable of having a data rate of up to 150Mbps
- Backward compatible with 802.11b/g standard
- Equipped with 10/100Mbps RJ45 ports for LAN and WAN with auto MDI/ MDI-X supported

Fixed-network Broadband Router

- Supports WAN connection types: Dynamic IP, static IP, PPPoE, PPTP and L2TP
- Supports multiple sessions like IPSec, L2TP and PPTP VPN pass-through
- Supports virtual server and DMZ for various networking applications
- Supports DHCP server, UPnP and Planet DDNS

RF Interface Characteristics

- Built-in 12dBi-directional antenna
- High Output Power with multiply-adjustable transmit power control
- Optional RP-SMA connector for flexible wireless deployment

Outdoor Environmental Characteristics

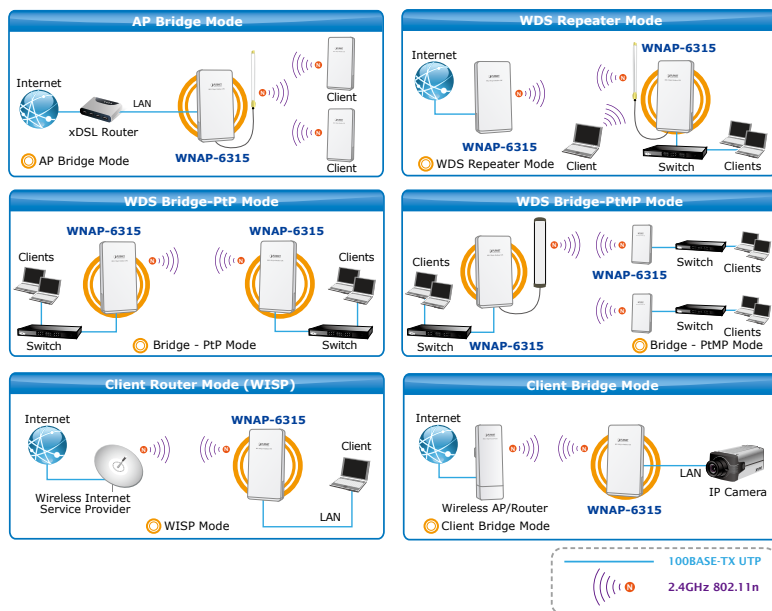
- IP55-rated outdoor UV-resistant plastic enclosure
- Passive PoE design
- Reset button on PoE injector
- Operating temperature: -20~70 degrees C

Multiple Operations and Wireless Modes

- Multiple operation modes: Bridge, Gateway and WISP
- Multiple wireless modes: AP Bridge, AP Router, Client Bridge, WDS PtP, WDS PtMP, Repeater, Universal Repeater and Client Router (WISP)
- Supports multiple SSIDs to allow users to access different networks through a single AP
- Supports WMM (Wi-Fi Multimedia) for better performance

Multiple Operation Modes Designed for Various Applications

The WNAP-6315 supports as many as 8 wireless operation modes including AP Bridge, AP Router, Client Bridge, Client Router (WISP), WDS PtP, WDS PtMP, Repeater and Universal Repeater, thus meeting users' various application requirements.



Secure Network Connection

- Supports software Wi-Fi Protected Setup (WPS)
- Advanced security: 64/128-bit WEP, WPA / WPA2, WPA-PSK / WPA2-PSK (TKIP/AES) and 802.1X authentication
- Supports NAT firewall features with SPI function to protect against DoS attacks
- Supports IP / Protocol-based access control and MAC filtering

Easy Installation and Management

- Web-based UI and Quick Setup Wizard for easy configuration
- Planet Smart Discovery Utility allows administrator to discover and locate each AP
- System status monitoring includes DHCP Client and System Log

Advanced Security and Rigorous Authentication

The WNAP-6315 supports WEP, WPA / WPA2, WPA-PSK and WPA2-PSK wireless encryptions, the advanced WPA2-AES mechanism, and 802.1X RADIUS authentication, which can effectively prevent eavesdropping from unauthorized users or stop an unauthenticated wireless access to bandwidth. Users are granted or denied access to the wireless LAN network based on the ACL (Access Control List) that the administrator pre-established. In addition, with the multiple-SSID feature, you can set up different wireless networks. The WNAP-6315 can therefore serve as a virtual access point for segmented networks tailored to any industrial need.

Rugged Architecture Provides Reliable Outdoor Connection

The WNAP-6315 is equipped with a sturdy and durable housing, meeting the IP55 rating for outdoor usage, which is definitely suitable for harsh environments. Besides, with its UV-resistant feature, the surface of the WNAP-6315's lightweight plastic housing does not yield to brittle fracture easily. Thus, it is as reliable as the metal case but more economical. With the proprietary Power over Ethernet (PoE) design, the WNAP-6315 can be easily installed in the areas where power outlets are not available. Additionally, the reset button on the PoE injector brings convenience to the administrator who can remotely recover the system's original setting and the self-healing (schedule reboot) capability to keep connection alive all the time.

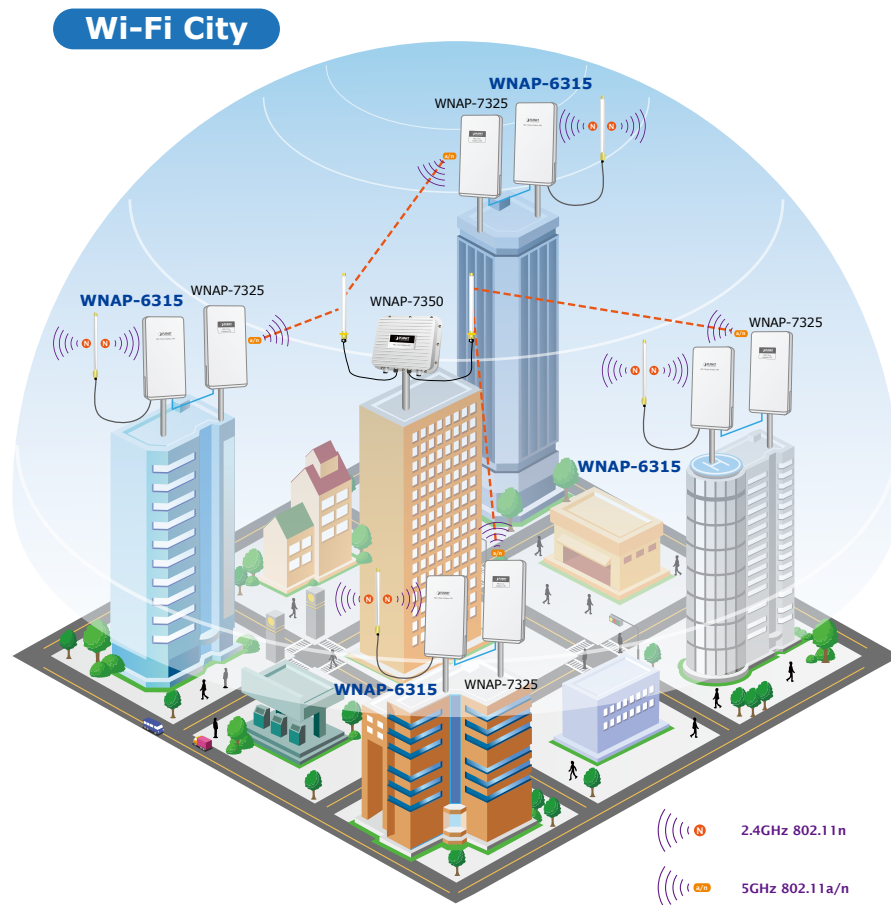
Easy Deployment and Management

With user-friendly Web UI and step-by-step setup wizard, the WNAP-6315 is easy to install, even for users who never experience in setting up a wireless network. Moreover, with the Planet Smart Discovery Utility and Planet Dynamic DNS service, the WNAP-6315 is convenient to be managed and configured remotely.

Applications

Flexible Outdoor Wireless Solution

The WNAP-6315 is a flexible and cost-effective outdoor wireless solution for widely open space applications. The WNAP-6315 can provide wireless connectivity with its built-in antenna or various types of antennas. When connecting with the 5GHz access points such as PLANET's WNAP-7325 or the WNAP-7335, the WNAP-6315 can establish the 5GHz backhaul links between buildings, thus providing an entire wireless solution for enterprises. The WNAP-6315 is compatible with any brands of 2.4GHz AP/router via the Universal Repeater mode which is easy to extend the wireless signal from indoor to outdoor.



**To get the best results, matching the WNAP-6315 with our related products is recommended.

Specifications

Model	WNAP-6315 2.4GHz 802.11n Wireless Outdoor CPE AP/ Router
Hardware	
Standard Support	IEEE 802.11b/g/n IEEE 802.3 IEEE 802.3u IEEE 802.3x
Memory	32 Mbytes DDR SDRAM 4 Mbytes Flash
PoE	Passive PoE
Interface	Wireless IEEE 802.11b/g/n, 1T1R PoE LAN (LAN 1): 1 x 10/100BASE-TX, auto-MDI/MDIX, passive PoE LAN 2/ WAN: 1 x 10/100BASE-TX, auto-MDI/MDIX
Antenna	Internal (Default): 12dBi directional antenna <ul style="list-style-type: none"> Horizontal: 30 degree Vertical: 20 degree External (Option): RP-SMA type Connector <ul style="list-style-type: none"> Switchable by Software For External Antenna Mode, attach antenna before power on
Wireless RF Specifications	
Wireless Technology	IEEE 802.11b/g IEEE 802.11n
Data Rate	IEEE 802.11b: 1, 2, 5.5, 11Mbps IEEE 802.11g: up to 54Mbps IEEE 802.11n (20MHz): up to 72Mbps IEEE 802.11n (40MHz): up to 150Mbps
Media Access Control	CSMA/CA
Modulation	Transmission/Emission type: OFDM Data modulation type: OFDM with BPSK, QPSK, 16-QAM, 64-QAM
Frequency Band	2.412GHz ~ 2.484GHz
Operating Channel	America/ FCC: 2.414~2.462GHz (11 Channels) Europe/ ETSI: 2.412~2.472GHz (13 Channels)
RF Output Power (Max.)	IEEE 802.11b: up to 26 ± 1dBm IEEE 802.11g: up to 21 ± 1dBm IEEE 802.11n: up to 17 ± 1dBm
Receiver Sensitivity (dBm)	IEEE 802.11b: -97dBm IEEE 802.11g: -90dBm IEEE 802.11n: -90dBm
Output Power Control	5-level TX power control
Software Features	
LAN	Built-in DHCP server supporting static IP address distribution Supports UPnP Supports IGMP Proxy Supports 802.1d STP (Spanning Tree)
WAN	<ul style="list-style-type: none"> Static IP DHCP (Dynamic IP) PPPoE PPTP L2TP
VPN Passthrough	<ul style="list-style-type: none"> PPTP L2TP IPSec IPv6
Operation Mode	<ul style="list-style-type: none"> Gateway Bridge WISP
Firewall	NAT firewall with SPI (Stateful Packet Inspection) Built-in NAT server supporting virtual server and DMZ Built-in firewall with port/ IP address/ MAC/ URL filtering
Wireless Mode	<ul style="list-style-type: none"> AP Bridge AP Router Client Bridge Client Router (WISP) WDS PtP WDS PtMP WDS Repeater Universal Repeater (AP+Client)
Max. SSID	Up to 5
Channel Width	20MHz / 40MHz
Wireless Isolation	Enable to isolate each connected wireless client so that they cannot access mutually
Encryption Type	64/128-bit WEP, WPA, WPA-PSK, WPA2, WPA2-PSK, 802.1X

Wireless Security	Wireless LAN ACL (Access Control List) filtering Wireless MAC address filtering Supports WPS (Wi-Fi Protected Setup) Enable/Disable SSID Broadcast
Max. Wireless Clients	10
Max. WDS APs	8
Max. Wired Clients	30
WMM	Supports Wi-Fi multimedia
QoS	Supports Quality of Service for bandwidth control
NTP	Network Time Management
Self Healing	Supports Schedule Reboot
B/G Protection Mode	Supports protection mechanism to prevent collisions among 802.11b/g modes
IAPP Roaming	Supports IAPP (Inter Access Point Protocol) roaming
Management	Web UI, DHCP Client, Configuration Backup and Restore, Dynamic DNS
Diagnostic Tool	System Log
Mechanical and Power	
IP Level	IP55
Material	Outdoor UV-resistant enclosure
Dimensions (W x D x H)	127 x 63 x 254 mm
Weight	485g
Installation	Pole mounting or wall mounting
Power Requirements	LAN1 • 12V DC, 1A/ passive PoE • Pin 4 V DC+ • Pin 5 reset • Pin 7,8 V DC-
Power Consumption (Max.)	12W
Environment and Certification	
Operating Temperature	-20~70 degrees C
Operating Humidity	10~95% non-condensing
Regulatory	CE, FCC, RoHS
Accessory	
Standard Accessories	• WNAP-6315 x 1 • 12V Power Adapter x 1 • PoE Injector x 1 • Plastic Strap x 1 • Quick Installation Guide x 1

Ordering Information

WNAP-6315	2.4GHz 150Mbps 802.11n Outdoor Wireless AP/Router (Built-in 12dBi Antenna + RP-SMA Connector)
-----------	---

Related Products

WNAP-6308	2.4GHz 150Mbps 802.11n Outdoor Wireless Access Point (1 x N-type Connector)
WNAP-6325	2.4GHz 300Mbps 802.11n Outdoor Wireless CPE (Built-in 12dBi Antenna)
WNL-U555HA	High Power 802.11n Wireless Compact USB Adapter

Accessories

CB-STP-25	25-meter STP Cat5 Cable
ANT-OM8	8dBi Omni Directional Antenna
ANT-OM15	15dBi Omni Directional Antenna
ANT-FP9	9dBi Flat Panel Directional Antenna
ANT-FP18	18dBi Flat Panel Directional Antenna
ANT-SE18	12-18dBi Adjustable Sector Antenna
ANT-YG13	13dBi Yagi Directional Antenna
ANT-YG20	20dBi Yagi Directional Antenna
ANT-GR21	21dBi Grid Directional Antenna
WL-LTNA	Lightning Arrester (N male to N female)
WL-SMA-0.6	0.6M RP-SMA (M) to N (M) Cable
WL-SMA-6	6M RP-SMA (M) to N (M) Cable
ELA-100	Ethernet Lightning Arrest Box

PLANET Technology Corporation

11F., No.96, Minquan Rd., Xindian Dist., New Taipei City
231, Taiwan (R.O.C.)
Tel: 886-2-2219-9518
Email: sales@planet.com.tw

Fax: 886-2-2219-9528
www.planet.com.tw



PLANET reserves the right to change specifications without prior notice. All brand names and trademarks are property of their respective owners. Copyright © 2015 PLANET Technology Corp. All rights reserved.

C-WNAP-6315